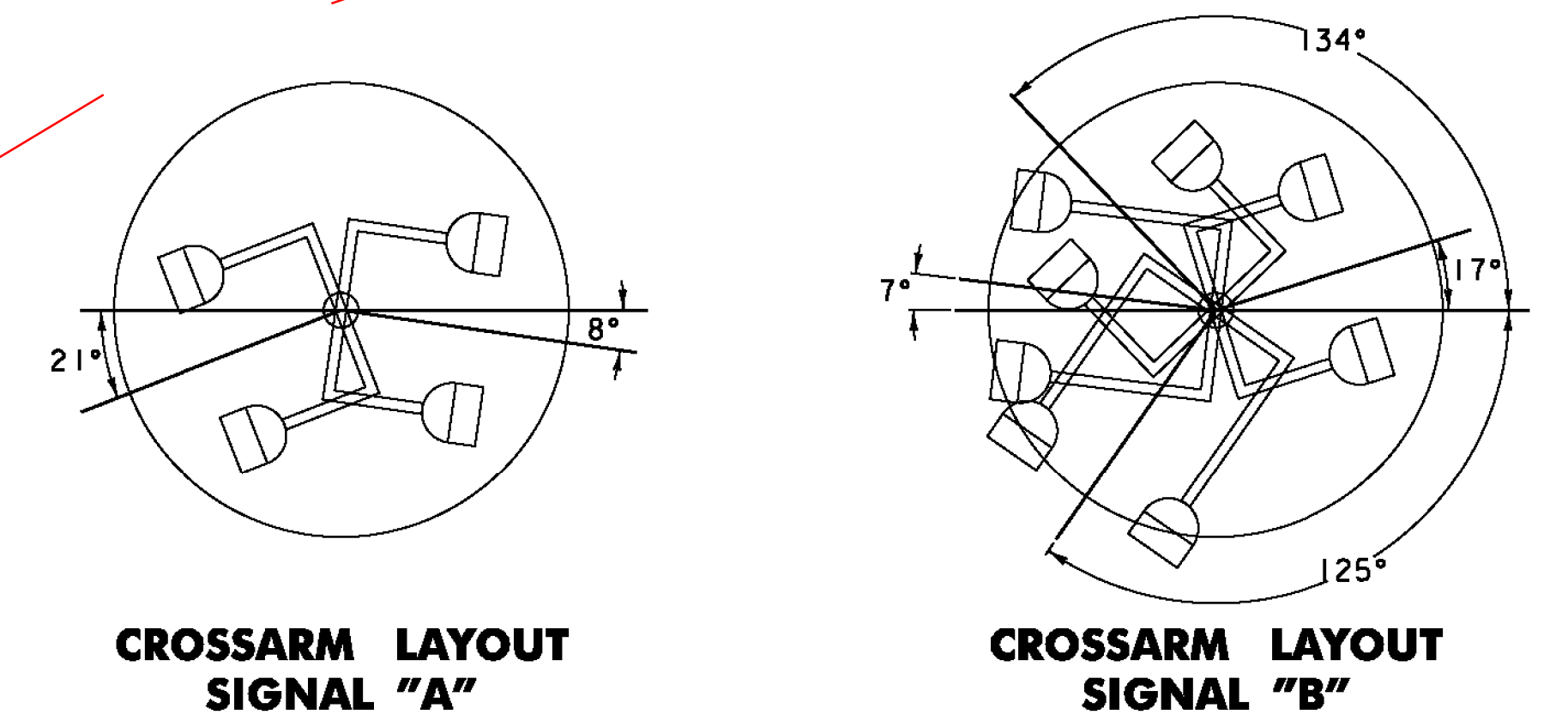
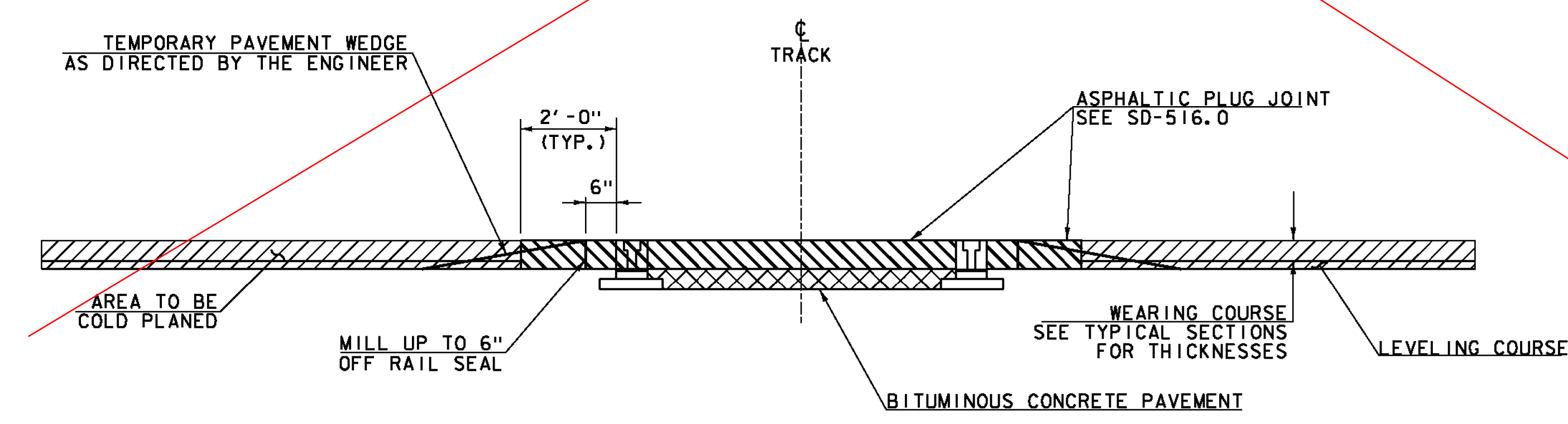


~~ITEM 900.645 SPECIAL PROVISION
(RAIL-HIGHWAY CROSSING ACTIVE WARNING SYSTEM) (AARDOT #850-917P)
LYNDON U.S. ROUTE 5 STA. 152+10, RT~~

QUANTITY	UNIT	DESCRIPTION
12	EA	12" LED RAILROAD SIGNAL HEAD
6	EA	LAMP CROSSARM WITH BRACKETS
150	LF	SIGNAL WIRE
1	EA	ELECTRONIC WARNING BELL

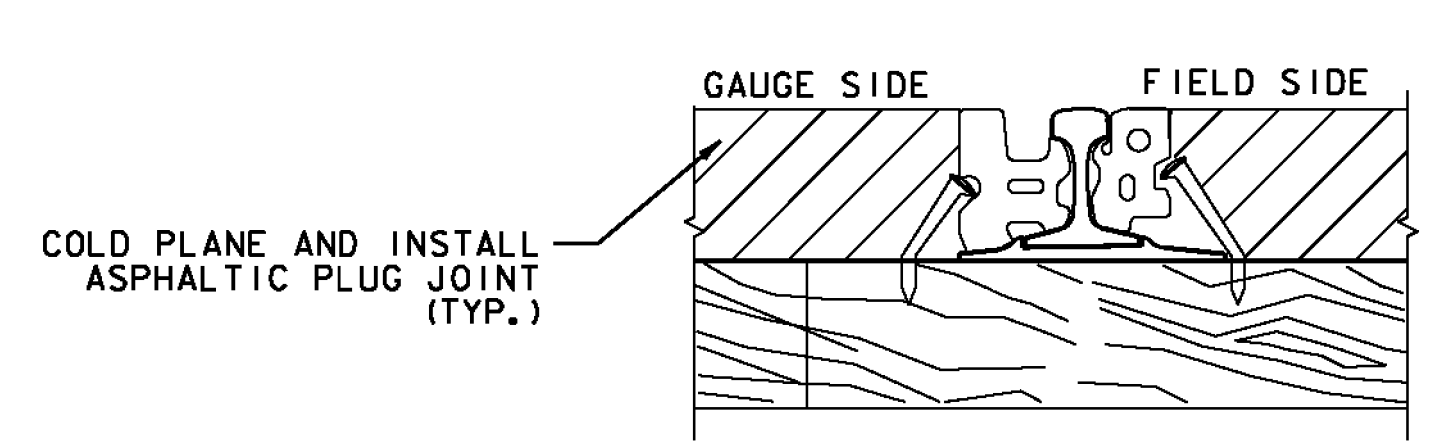


**SIGNAL LAYOUT
DEPOT STREET AARDOT #850-917P
LYNDON U.S. ROUTE 5 STA 152+10, RT**

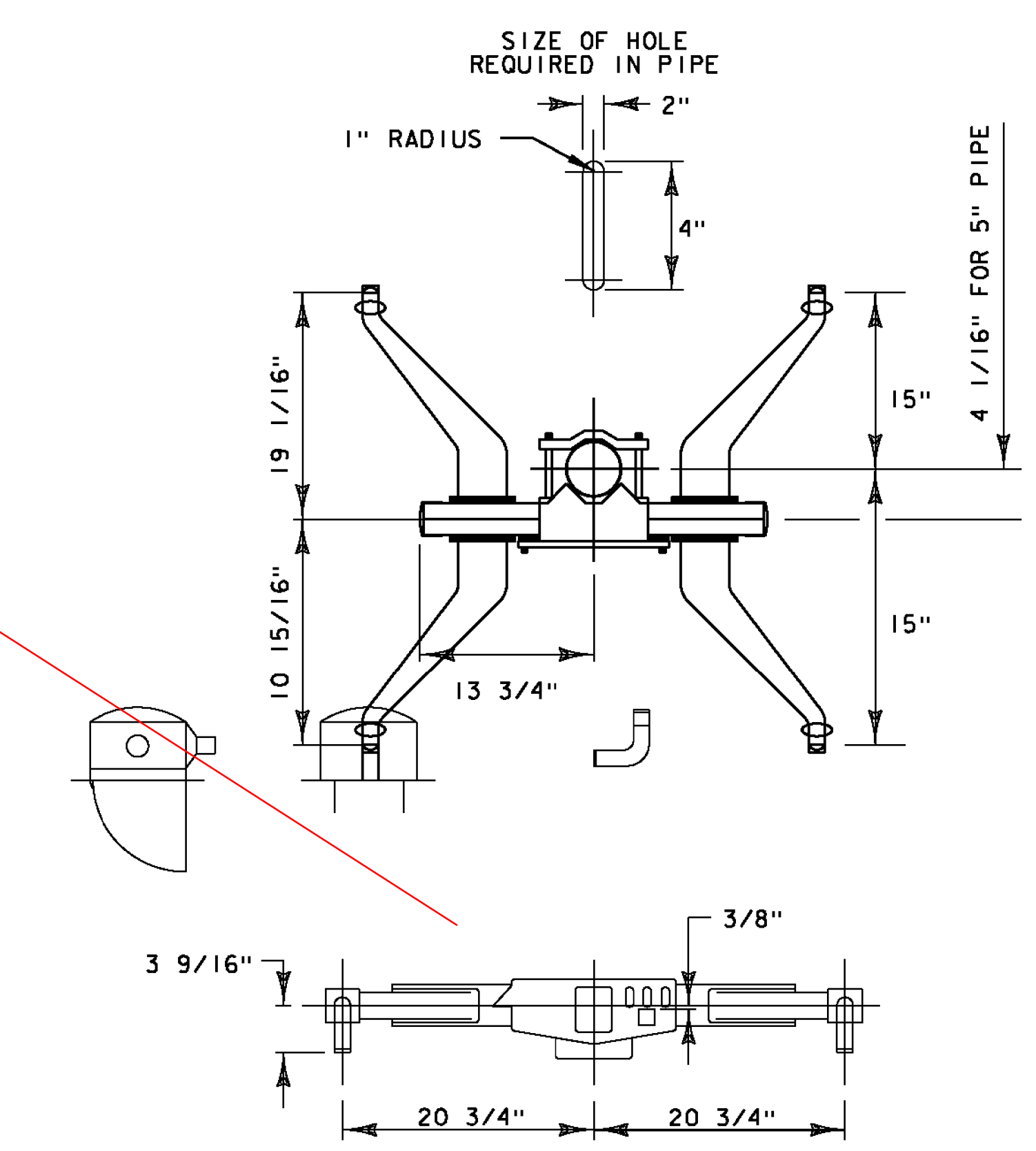


TRANSITION AREA FOR RAIL CROSSING

NOTE: COLD PLANE TO 6 INCHES FROM RAIL SEAL. REMAINING 6 INCHES TO BE REMOVED WITH OTHER BITUMINOUS CONCRETE PAVEMENT WITHIN THE LIMITS OF THE ASPHALTIC PLUG JOINT INSTALLATION.



RAIL-SEAL TYPICAL



**TYPICAL LAMP CROSSARM WITH BRACKETS
NOT TO SCALE**

NOTES - AARDOT #850-917P

1. COLD PLANE UP TO, AND IN BETWEEN THE EXISTING RAILS.
2. INSTALL NEW COMMERCIAL FLANGEWAY RAIL SEAL MATERIAL.
3. TYPE AND DESIGN OF COMMERCIAL FLANGEWAY MATERIALS SHALL RECEIVE APPROVAL FROM THE ENGINEER.
4. MANUFACTURER'S SPECIFICATIONS SHALL BE FOLLOWED FOR THE INSTALLATION OF COMMERCIAL FLANGEWAY MATERIALS.
5. ALL WORK AND FLANGEWAY MATERIALS WILL BE PAID UNDER ITEM 900.640 SPECIAL PROVISION (RUBBER RAIL SEAL).
6. SAW CUTTING SHALL NOT BE PAID SEPARATELY BUT BE INCIDENTAL TO ITEM 210.10 COLD PLANING, BITUMINOUS PAVEMENT.
7. ASPHALTIC PLUG JOINTS WILL BE PAID AS ITEM 516.10 BRIDGE EXPANSION JOINT, ASPHALTIC PLUG.
8. ALL WORK MUST BE PERFORMED WITHIN THE EXISTING RIGHT OF WAY (ROW). NO ADDITIONAL ROW HAS BEEN ACQUIRED BY THE STATE TO ACCOMMODATE CONSTRUCTION OF THE RAIL CROSSING.

NOT TO SCALE

RAILROAD CROSSING DETAIL SHEET #22	AARDOT #850-917P	
	PROJECT NAME: ST JOHNSBURY - LYNDON	
	PROJECT NUMBER: STP 2936(I)	
FILE NAME: p1lc308.dgn	DESIGNED BY: D. DRAPER	PLOT DATE: 5/5/2014
PROJECT LEADER: G. EDWARDS	CHECKED BY: J. LITTLE	DRAWN BY: D. DRAPER
		SHEET 53 OF 250

