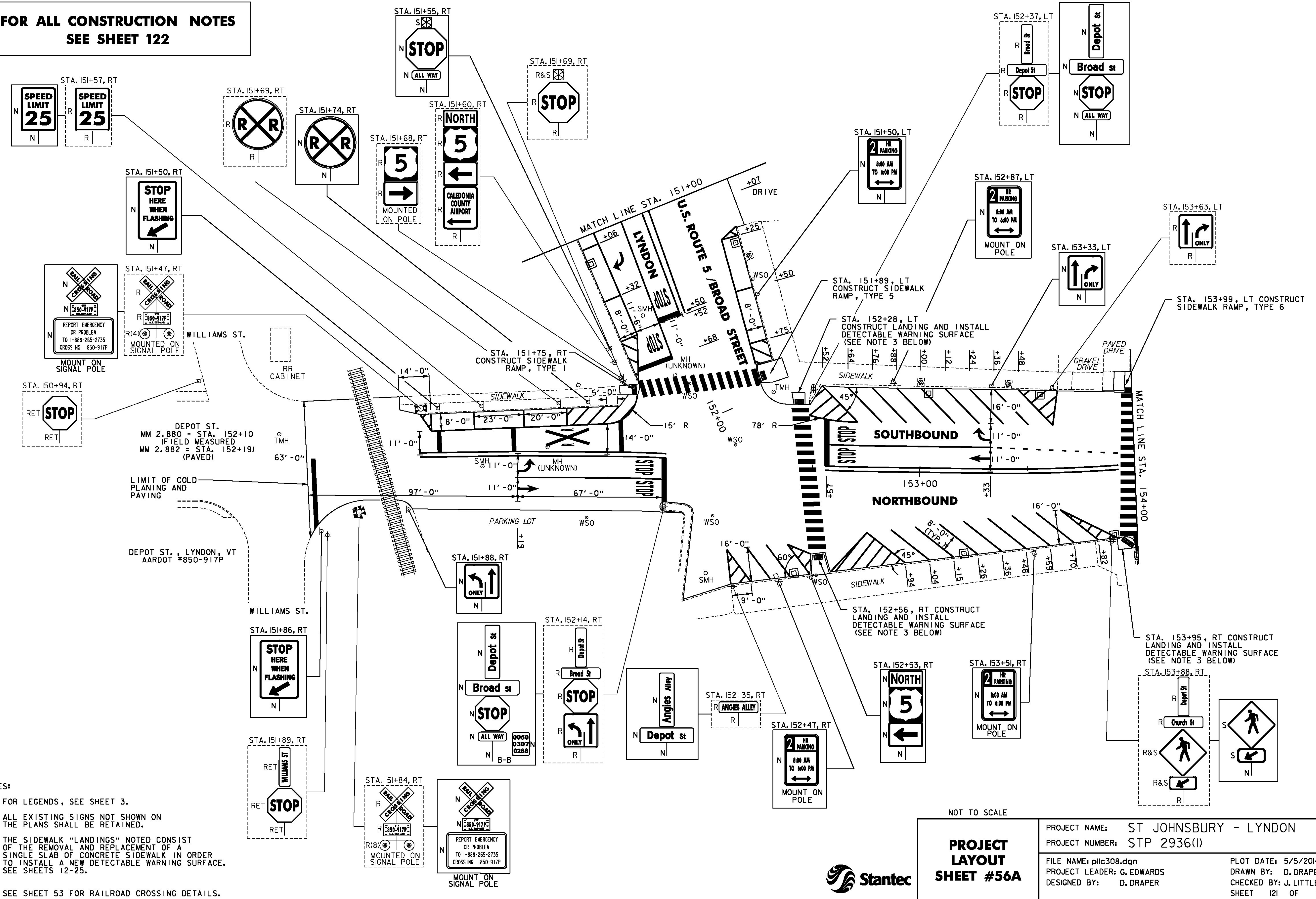


**FOR ALL CONSTRUCTION NOTES
SEE SHEET 122**



- NOTES:
- FOR LEGENDS, SEE SHEET 3.
 - ALL EXISTING SIGNS NOT SHOWN ON THE PLANS SHALL BE RETAINED.
 - THE SIDEWALK "LANDINGS" NOTED CONSIST OF THE REMOVAL AND REPLACEMENT OF A SINGLE SLAB OF CONCRETE SIDEWALK IN ORDER TO INSTALL A NEW DETECTABLE WARNING SURFACE. SEE SHEETS 12-25.
 - SEE SHEET 53 FOR RAILROAD CROSSING DETAILS.

NOT TO SCALE

<p>PROJECT LAYOUT SHEET #56A</p>	PROJECT NAME: ST JOHNSBURY - LYNDON
	PROJECT NUMBER: STP 2936(I)
	FILE NAME: pllc308.dgn
DESIGNED BY: D. DRAPER	PLOT DATE: 5/5/2014
	DRAWN BY: D. DRAPER
	CHECKED BY: J. LITTLE
	SHEET 121 OF 250