

CHANGING ELEVATION OF Dis, CBs OR MHS
SEE SHEET 27

REHAB.
Dis, CBs OR MHS, CLASS I, II, OR III
SEE SHEETS 27-28

CHANGING ELEVATION OF SEWER MANHOLES
SEE SHEET 28

CAST-IN-PLACE CONCRETE CURB,
TYPE B
STA. 27+76, LT
STA. 28+22, RT

REMOVAL OF EXISTING CURB
STA. 27+76, LT
STA. 28+22, RT

PORTLAND CEMENT
CONCRETE SIDEWALK, 5 INCH
STA. 27+76, LT
STA. 28+21, LT
STA. 28+22, RT

DETECTABLE WARNING SURFACE
STA. 27+76, LT
STA. 28+21, LT
STA. 28+22, RT

ADJUST ELEVATION OF VALVE BOX
SEE SHEETS 28-29

DURABLE & TEMPORARY 4 INCH WHITE LINE
(ALL LINES WILL INCLUDE EDGE LINE BREAKS
AND RADII FOR SIDE ROADS)

STA. 26+50 TO 30+00, RT (PARKING SPACES & DIAGONALS)
SEE SHEETS 55 TO 56 (TYP.)

STA. 26+50 TO 30+00, LT (PARKING SPACES & DIAGONALS)
STA. 26+50 TO 27+18, SOLID LT (LANE LINE)
STA. 27+18 TO 28+83, DOTTED LT
STA. 27+97, SOLID LT (EDGE LINES & DIAGONALS,
CENTRAL ST. TH-344)

DURABLE & TEMPORARY 4 INCH YELLOW LINE
(ALL LINES WILL INCLUDE C BREAKS FOR
SIDE ROADS & CROSSWALKS)

STA. 26+50 TO 30+00, SOLID LT & RT
STA. 27+97, DOUBLE SOLID LT (CENTRAL ST. TH-344)

DURABLE & TEMPORARY 24 INCH STOP BAR
STA. 27+97, LT (CENTRAL ST. TH-344)

DURABLE LETTER OR SYMBOL, TYPE D TAPE
STA. 26+58, LT ARROW
STA. 26+70, LT "ONLY"
STA. 27+14, LT ARROW
STA. 27+63, LT HANDICAP SYMBOL
STA. 27+97, LT "STOP" (CENTRAL ST. TH-344)
STA. 28+86, RT HANDICAP SYMBOL

TEMPORARY LETTER OR SYMBOL, PAINT
STA. 26+58, LT ARROW
STA. 27+14, LT ARROW
STA. 27+63, LT HANDICAP SYMBOL
STA. 27+97, LT "STOP" (CENTRAL ST. TH-344)
STA. 28+86, RT HANDICAP SYMBOL

DURABLE CROSSWALK MARKING, TYPE A TAPE
STA. 27+97, LT (CENTRAL ST. TH-344)
STA. 28+22, LT TO RT
SEE SHEET 55 (TYP.)

TEMPORARY CROSSWALK MARKING, PAINT
STA. 27+97, LT (CENTRAL ST. TH-344)
STA. 28+22, LT TO RT
SEE SHEET 55 (TYP.)

REMOVING SIGNS
AS SHOWN - 6

SPECIAL PROVISION (PARKING
METER POST)

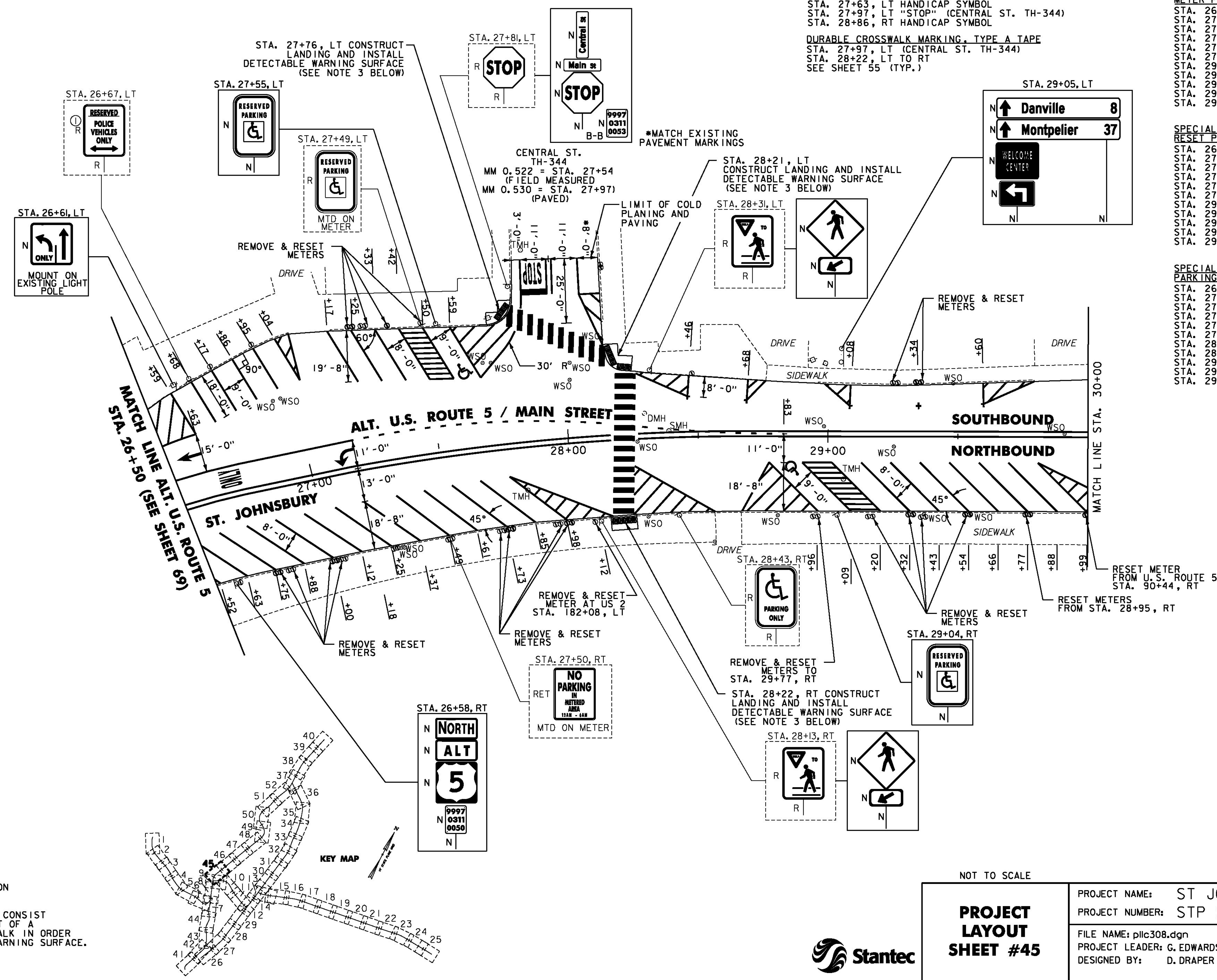
STA. 26+75, RT
STA. 27+00, RT
STA. 27+25, LT
STA. 27+38, RT
STA. 27+73, RT
STA. 27+98, RT
STA. 29+32, RT
STA. 29+34, LT
STA. 29+54, RT
STA. 29+77, RT
STA. 29+99, RT

SPECIAL PROVISION (REMOVE &
RESET PARKING METER)

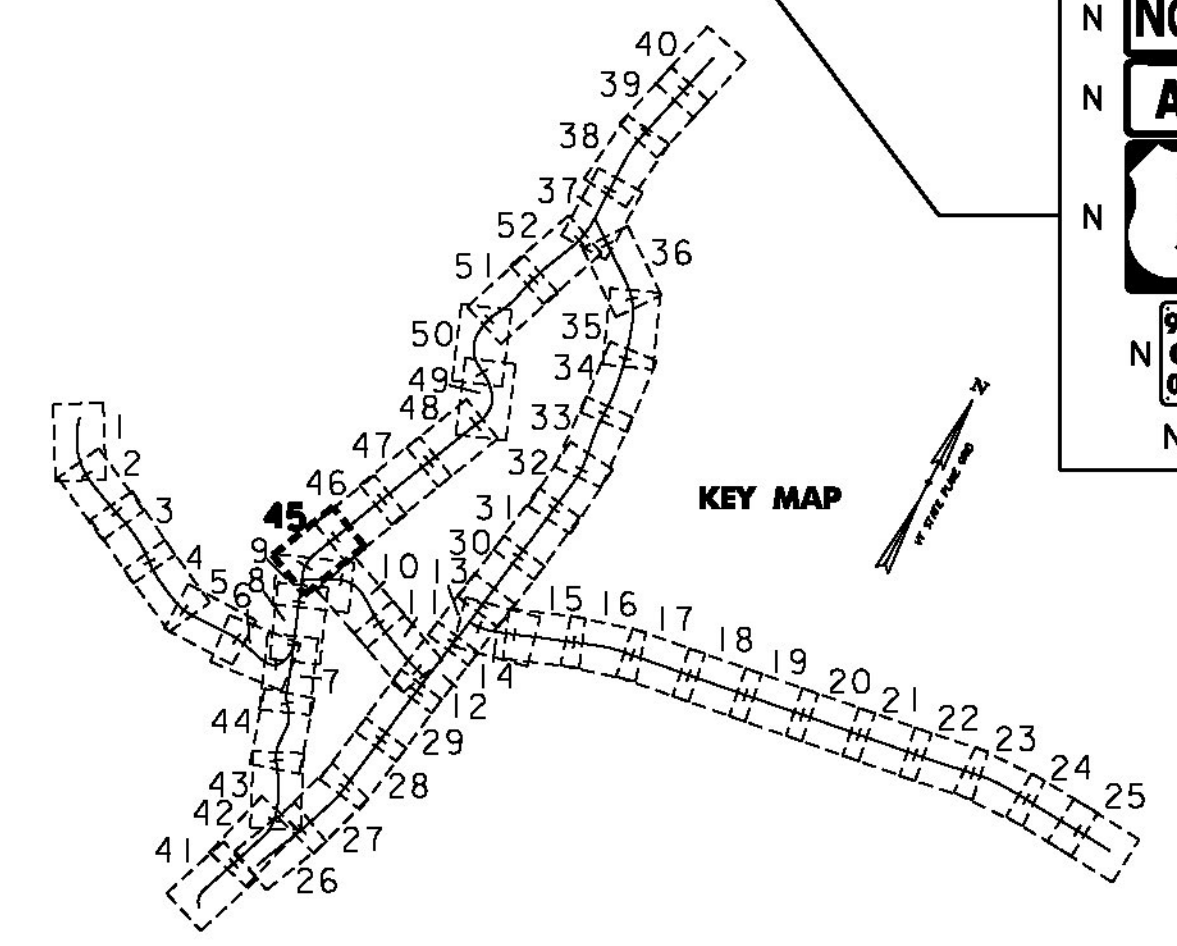
STA. 26+75, RT
STA. 27+00, RT
STA. 27+25, LT
STA. 27+38, LT
STA. 27+73, RT
STA. 27+98, RT
STA. 29+32, RT
STA. 29+34, LT
STA. 29+54, RT
STA. 29+77, RT
STA. 29+99, RT

SPECIAL PROVISION (REMOVE
PARKING METER POST)

STA. 26+81, RT
STA. 27+04, RT
STA. 27+30, LT
STA. 27+50, LT
STA. 27+72, RT
STA. 27+95, RT
STA. 28+10, RT
STA. 28+95, RT
STA. 29+16, RT
STA. 29+26, LT
STA. 29+36, RT



- NOTES:
- FOR LEGENDS, SEE SHEET 3.
 - ALL EXISTING SIGNS NOT SHOWN ON THE PLANS SHALL BE RETAINED.
 - THE SIDEWALK "LANDINGS" NOTED CONSIST OF THE REMOVAL AND REPLACEMENT OF A SINGLE SLAB OF CONCRETE SIDEWALK IN ORDER TO INSTALL A NEW DETECTABLE WARNING SURFACE. SEE SHEETS 12-25.



<p>NOT TO SCALE</p> <p>PROJECT LAYOUT SHEET #45</p>	<p>PROJECT NAME: ST JOHNSBURY - LYNDON</p> <p>PROJECT NUMBER: STP 2936(I)</p>
	<p>FILE NAME: pllc308.dgn</p> <p>PROJECT LEADER: G. EDWARDS</p> <p>DESIGNED BY: D. DRAPER</p>

