

CHANGING ELEVATION OF DIS. CBS OR MHS
SEE SHEET 27

ADJUST ELEVATION OF VALVE BOX
SEE SHEETS 28-29

DURABLE & TEMPORARY 4 INCH WHITE LINE
(ALL LINES WILL INCLUDE EDGE LINE BREAKS
AND RADIUS FOR SIDE ROADS)
STA. 148+00 TO 151+85.28, SOLID LT & RT
STA. 149+77, SOLID RT (EDGELINES, ST. JOHNS ST.)

DURABLE & TEMPORARY 24 INCH STOP BAR
STA. 149+77, RT (ST. JOHNS ST. TH-438)

DURABLE & TEMPORARY LETTER OR SYMBOL
STA. 149+77, RT "STOP" (ST. JOHNS ST. TH-438)

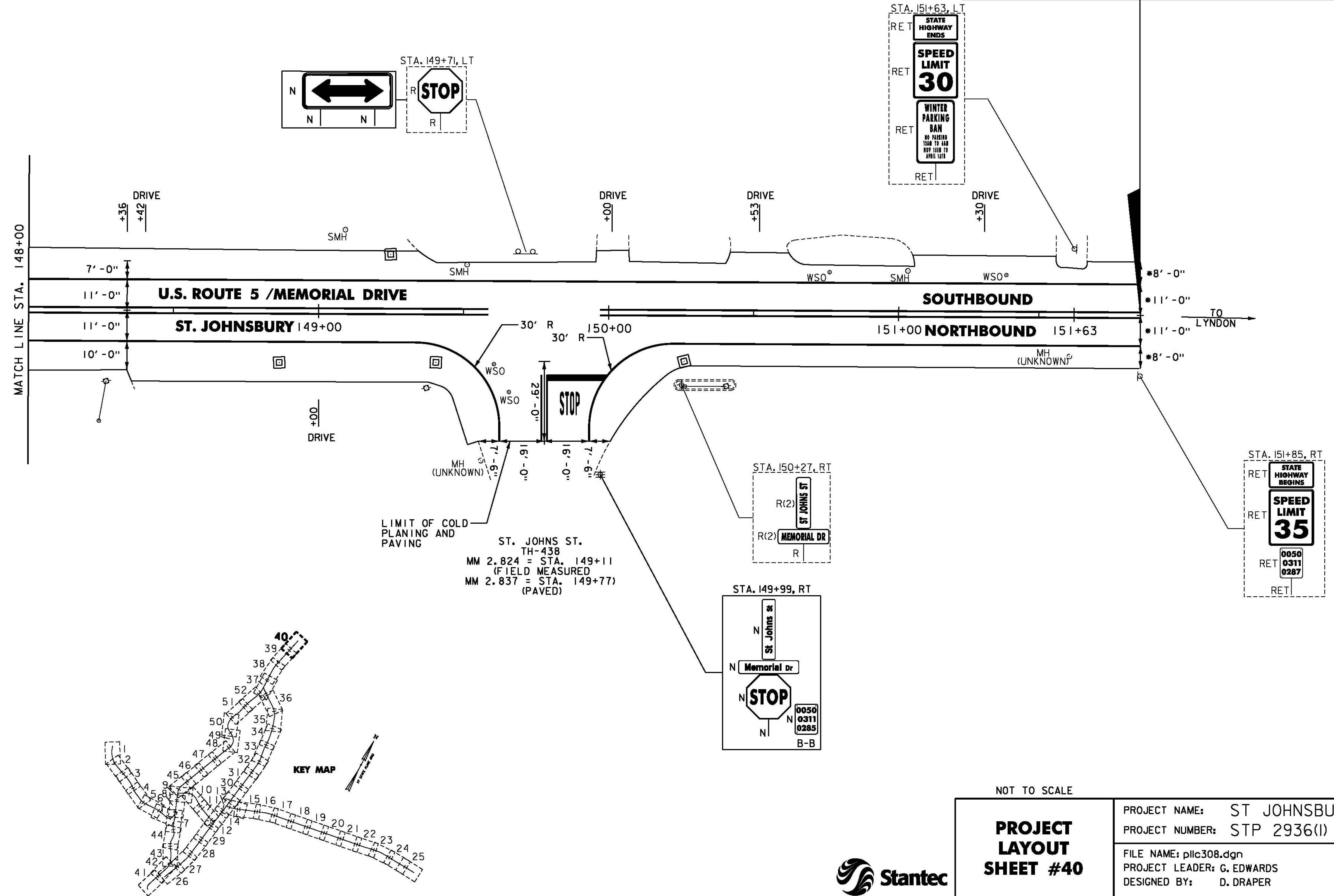
REHAB.
DIS. CBS OR MHS, CLASS I, II OR III
SEE SHEETS 27-28

CHANGING ELEVATION OF SEWER MANHOLES
SEE SHEET 28

DURABLE & TEMPORARY 4 INCH YELLOW LINE
(ALL LINES WILL INCLUDE ϕ BREAKS FOR SIDE ROADS)
STA. 148+00 TO 151+85.28, SOLID LT & RT
STA. 149+77, DOUBLE SOLID RT (ST. JOHNS ST. TH-438)

REMOVING SIGNS
AS SHOWN - 5

**END STP 2936(1) U.S. ROUTE 5
ST. JOHNSBURY STA. 151+85.28 (MM 2.876)**



- NOTES:
- FOR LEGENDS, SEE SHEET 3.
 - ALL EXISTING SIGNS NOT SHOWN ON THE PLANS SHALL BE RETAINED.

NOT TO SCALE



PROJECT LAYOUT SHEET #40	PROJECT NAME: ST JOHNSBURY - LYNDON	PLOT DATE: 5/5/2014
	PROJECT NUMBER: STP 2936(1)	DRAWN BY: D. DRAPER
	FILE NAME: pllc308.dgn	CHECKED BY: J. LITTLE
	DESIGNED BY: D. DRAPER	SHEET 104 OF 250