

THINNING AND TRIMMING FOR SIGNS
 STA. 123+49, LT
 SEE SHEET 241 (TYP.)

STEEL BEAM GUARDRAIL, GALVANIZED
 STA. 127+95.0 TO 128+00.0, RT

STEEL BEAM GUARDRAIL, GALVANIZED W/8 FEET POSTS
 STA. 123+00.0 TO 127+95.0, RT

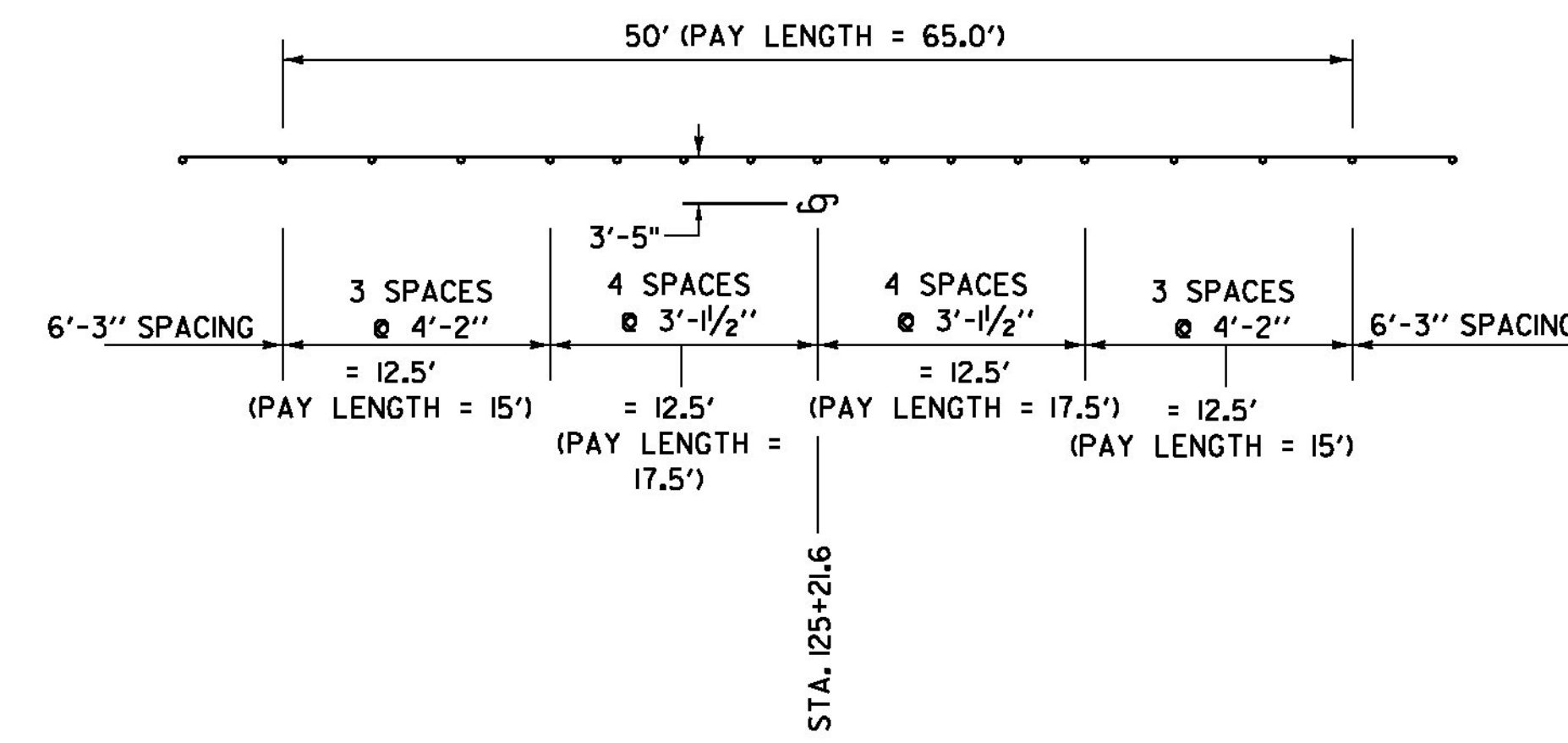
REMOVAL AND DISPOSAL OF GUARDRAIL
 STA. 123+00 TO 128+00.0, RT

ADJUST ELEVATION OF VALVE BOX
 SEE SHEETS 28-29

DURABLE & TEMPORARY 4 INCH WHITE LINE
 (ALL LINES WILL INCLUDE EDGE LINE BREAKS
 AND RADII FOR SIDE ROADS)
 STA. 123+00 TO 128+00, SOLID LT & RT

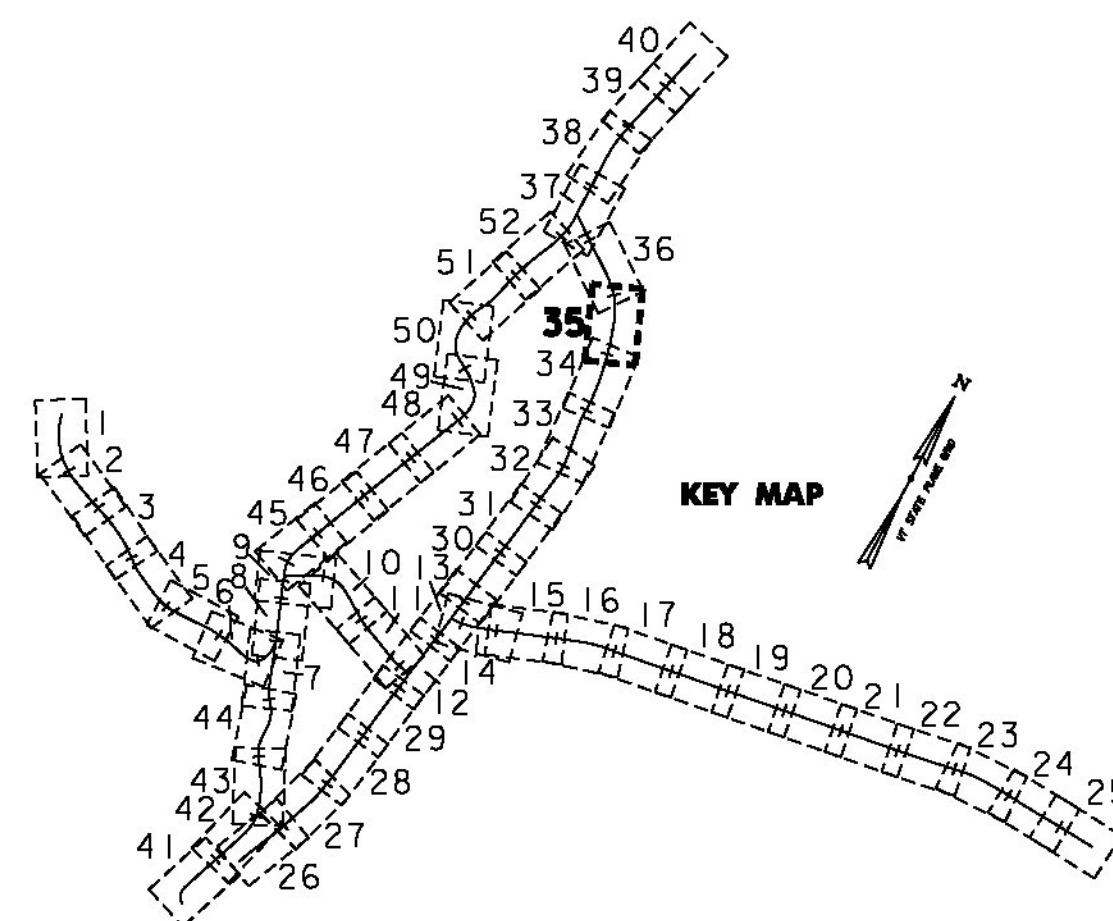
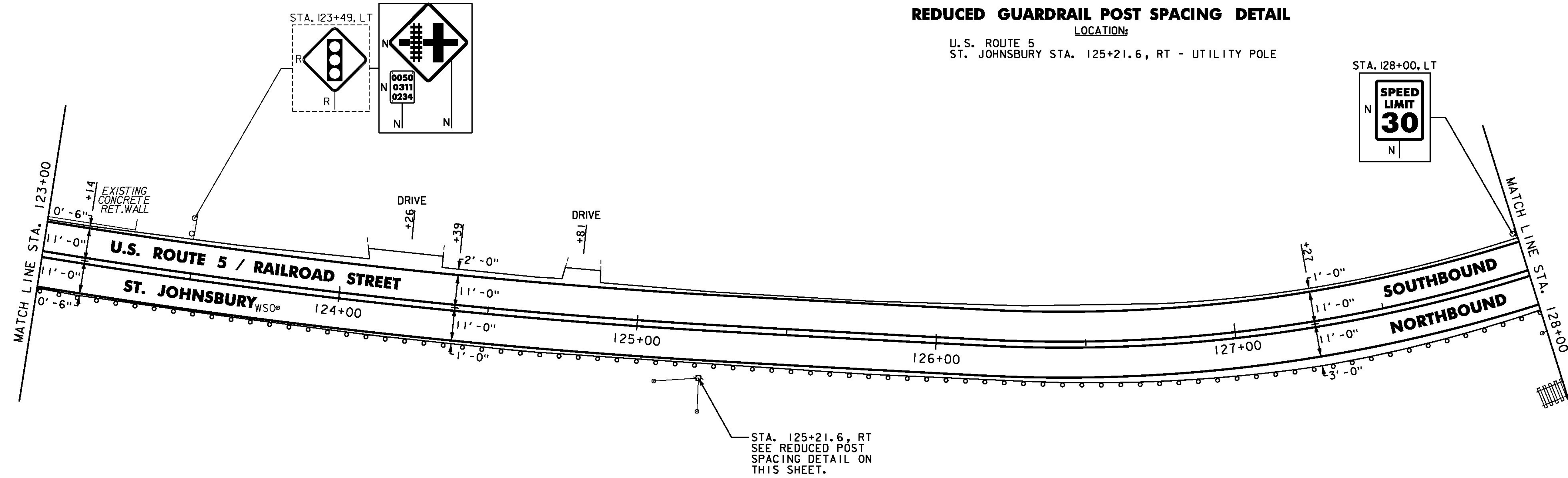
DURABLE & TEMPORARY 4 INCH YELLOW LINE
 (ALL LINES WILL INCLUDE & BREAKS FOR SIDE ROADS)
 STA. 123+00 TO 128+00, SOLID LT & RT

REMOVING SIGNS
 AS SHOWN - 1



REDUCED GUARDRAIL POST SPACING DETAIL

LOCATION:
 U.S. ROUTE 5
 ST. JOHNSBURY STA. 125+21.6, RT - UTILITY POLE



- NOTES:
- FOR LEGENDS, SEE SHEET 3.
 - ALL EXISTING SIGNS NOT SHOWN ON THE PLANS SHALL BE RETAINED.

NOT TO SCALE

PROJECT LAYOUT SHEET #35



PROJECT NAME: ST JOHNSBURY - LYNDON
 PROJECT NUMBER: STP 2936(I)

FILE NAME: pllc308.dgn
 PROJECT LEADER: G. EDWARDS
 DESIGNED BY: D. DRAPER

PLOT DATE: 5/5/2014
 DRAWN BY: D. DRAPER
 CHECKED BY: J. LITTLE
 SHEET 97 OF 250