

REHAB.
Dis. CBs OR MHS. CLASS I, II OR III
SEE SHEETS 27-28

PORTLAND CEMENT
CONCRETE SIDEWALK, 5 INCH
STA. 245+70, LT
STA. 245+88, RT

DETECTABLE WARNING SURFACE
STA. 245+70, LT
STA. 245+88, RT

DURABLE & TEMPORARY 4 INCH WHITE LINE
(ALL LINES WILL INCLUDE EDGE LINE BREAKS
AND RADII FOR SIDE ROADS)
STA. 245+00 TO 248+10.72, SOLID LT & RT

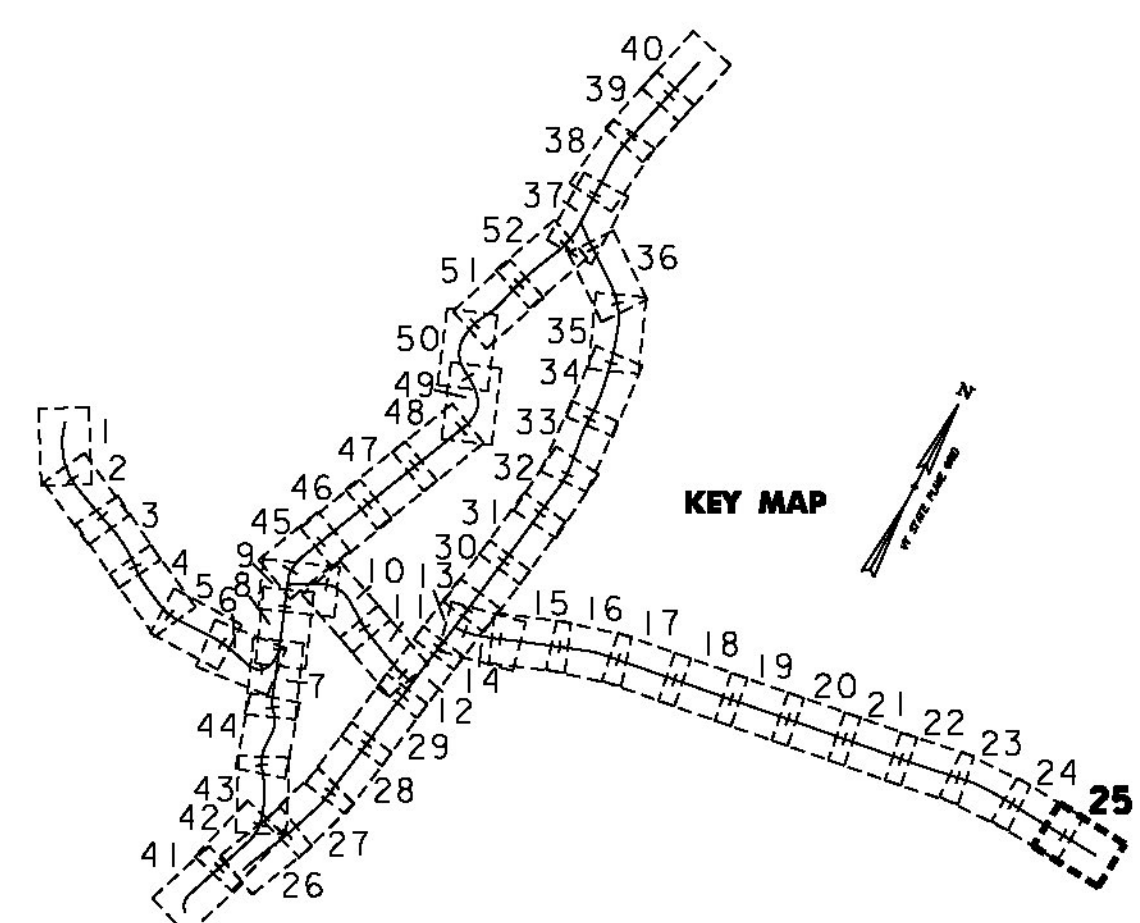
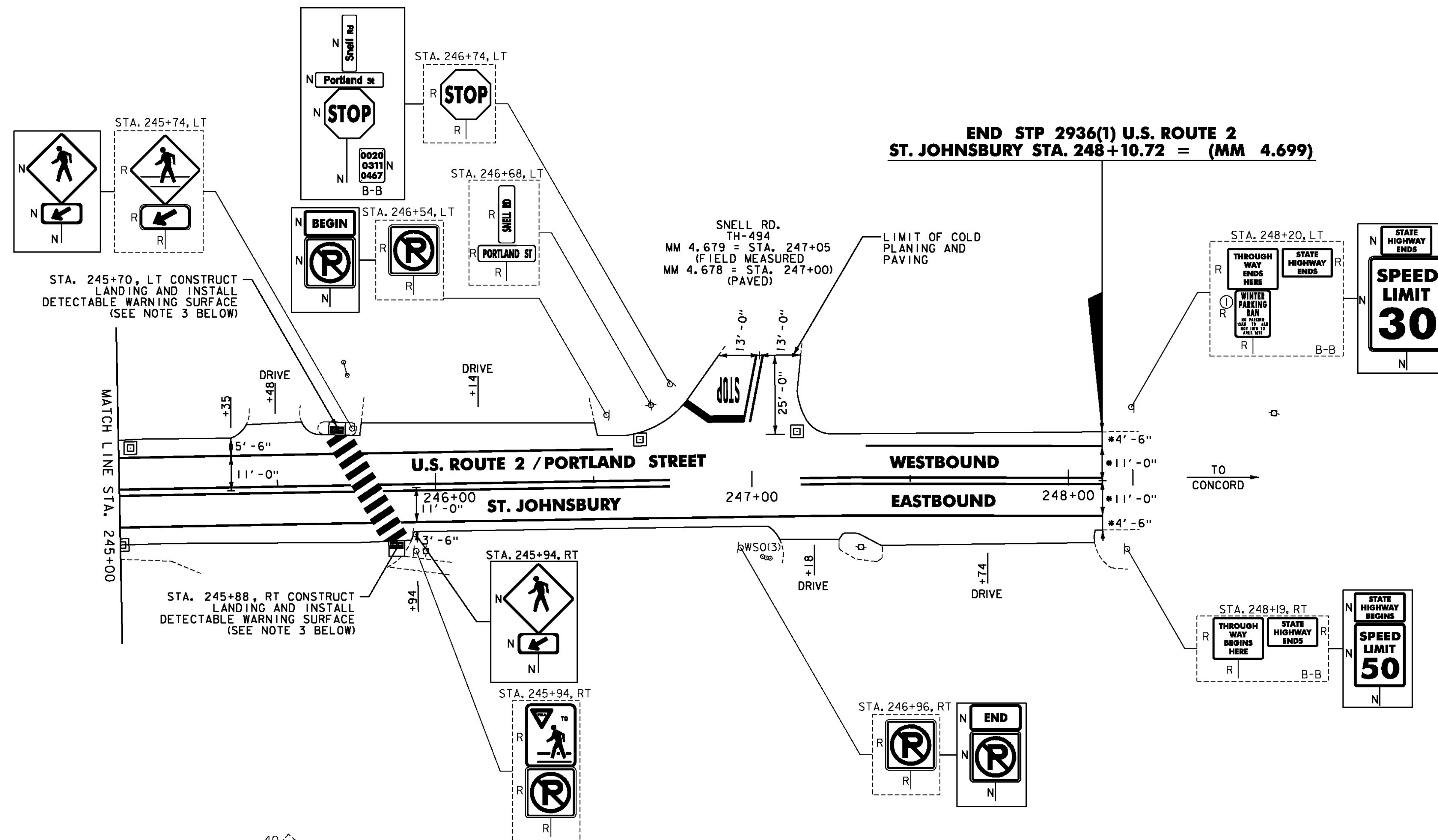
DURABLE & TEMPORARY 4 INCH YELLOW LINE
(ALL LINES WILL INCLUDE ϕ BREAKS FOR
SIDE ROADS & CROSSWALKS)
STA. 245+00 TO 248+10.72, SOLID LT & RT
STA. 247+00, DOUBLE SOLID LT (SNELL RD. TH-494)
DURABLE & TEMPORARY 24 INCH STOP BAR
STA. 247+00, LT (SNELL RD. TH-494)

DURABLE & TEMPORARY LETTER OR SYMBOL
STA. 247+00, LT "STOP" (SNELL RD. TH-494)

DURABLE CROSSWALK MARKING, TYPE D TAPE
STA. 245+70, LT TO 245+88, RT
SEE SHEET 55 (TYP.)

TEMPORARY CROSSWALK MARKING, PAINT
STA. 245+70, LT TO 245+88, RT
SEE SHEET 55 (TYP.)

REMOVING SIGNS
AS SHOWN - 14



NOTES:

- FOR LEGENDS, SEE SHEET 3.
- ALL EXISTING SIGNS NOT SHOWN ON THE PLANS SHALL BE RETAINED.
- THE SIDEWALK "LANDINGS" NOTED CONSIST OF THE REMOVAL AND REPLACEMENT OF A SINGLE SLAB OF CONCRETE SIDEWALK IN ORDER TO INSTALL A NEW DETECTABLE WARNING SURFACE. SEE SHEETS 12-25.

NOT TO SCALE

PROJECT LAYOUT SHEET #25



PROJECT NAME: ST JOHNSBURY - LYNDON
PROJECT NUMBER: STP 2936(1)

FILE NAME: pllc308.dgn
PROJECT LEADER: G. EDWARDS
DESIGNED BY: D. DRAPER

PLOT DATE: 5/5/2014
DRAWN BY: D. DRAPER
CHECKED BY: J. LITTLE
SHEET 87 OF 250