

REHAB.
DIs, CBs OR MHS, CLASS I, II OR III
SEE SHEETS 27-28

CHANGING ELEVATION OF SEWER MANHOLES
SEE SHEET 28

PORTLAND CEMENT
CONCRETE SIDEWALK, 5 INCH
STA. 239+17, LT

DETECTABLE WARNING SURFACE
STA. 239+17, LT

SPECIAL PROVISION (ALUMINUM APPROACH
RAILING)
STA. 237+49.0 TO 237+74.0, LT
STA. 237+45.0 TO 237+70.0, RT
STA. 238+37.0 TO 238+62.0, RT
STA. 238+40.0 TO 238+65.0, LT

STEEL BEAM GUARDRAIL GALVANIZED
STA. 237+32.5 TO 237+45.0, RT
STA. 238+62.0 TO 238+74.5, RT

ANCHOR FOR STEEL BEAM RAIL
STA. 237+32.5, RT
STA. 238+74.5, RT

REMOVAL AND DISPOSAL OF GUARDRAIL
STA. 237+47 TO 237+74, LT
STA. 237+57 TO 237+70, RT
STA. 238+37 TO 238+62, RT
STA. 238+40 TO 238+52.5, LT

ADJUST ELEVATION OF VALVE BOX
SEE SHEETS 28-29

DURABLE & TEMPORARY 4 INCH WHITE LINE
(ALL LINES WILL INCLUDE ϕ BREAKS FOR SIDE ROADS)
STA. 235+00 TO 240+00, SOLID LT & RT
STA. 239+00 TO 240+00, SOLID LT & RT

DURABLE & TEMPORARY 4 INCH YELLOW LINE
(ALL LINES WILL INCLUDE ϕ BREAKS FOR SIDE ROADS)
STA. 235+00 TO 240+00, SOLID LT & RT
STA. 239+39, DOUBLE SOLID LT (ASSISQUA AVE. TH-490)

DURABLE & TEMPORARY 24 INCH STOP BAR
STA. 239+39, LT (ASSISQUA AVE. TH-490)

DURABLE & TEMPORARY LETTER OR SYMBOL
STA. 239+39, LT "STOP" (ASSISQUA AVE. TH-490)

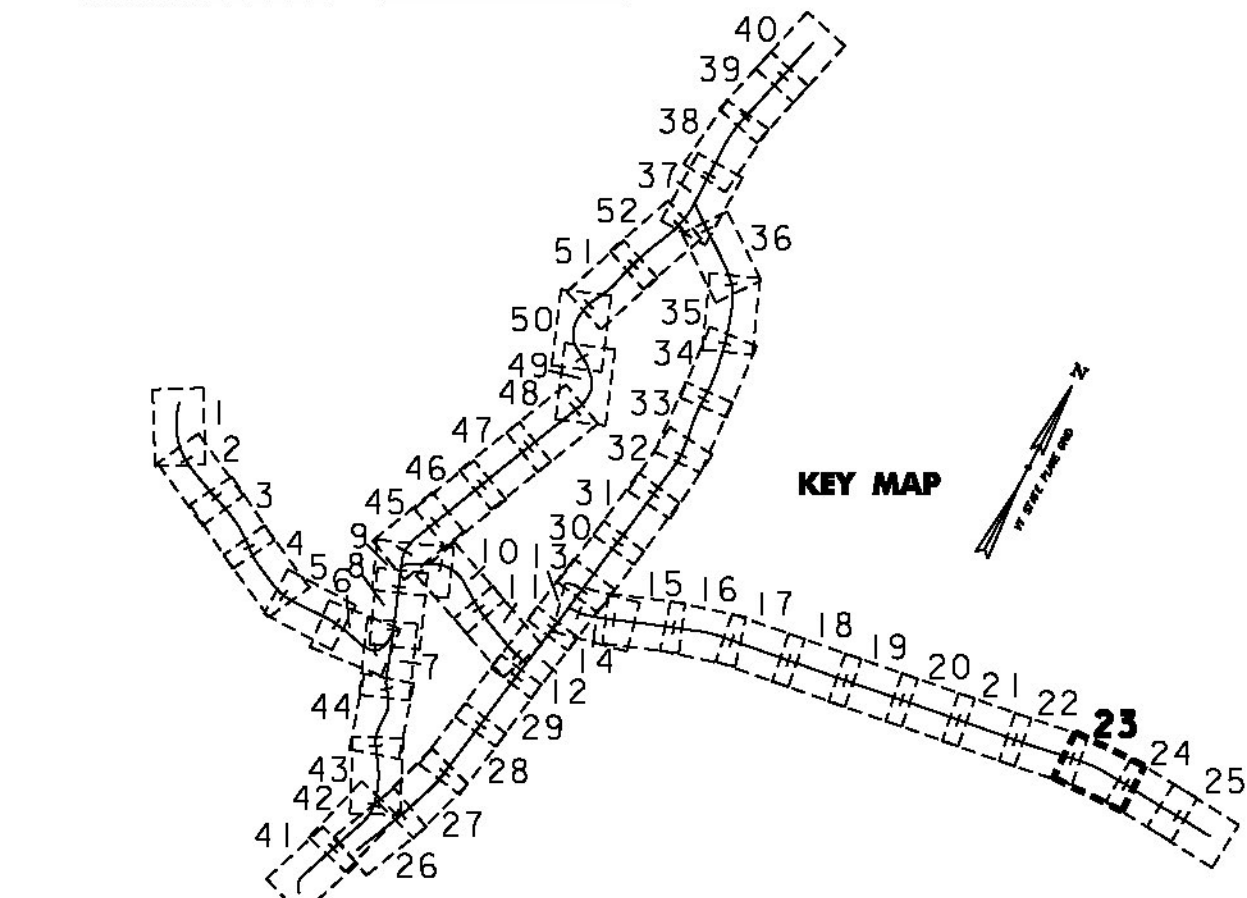
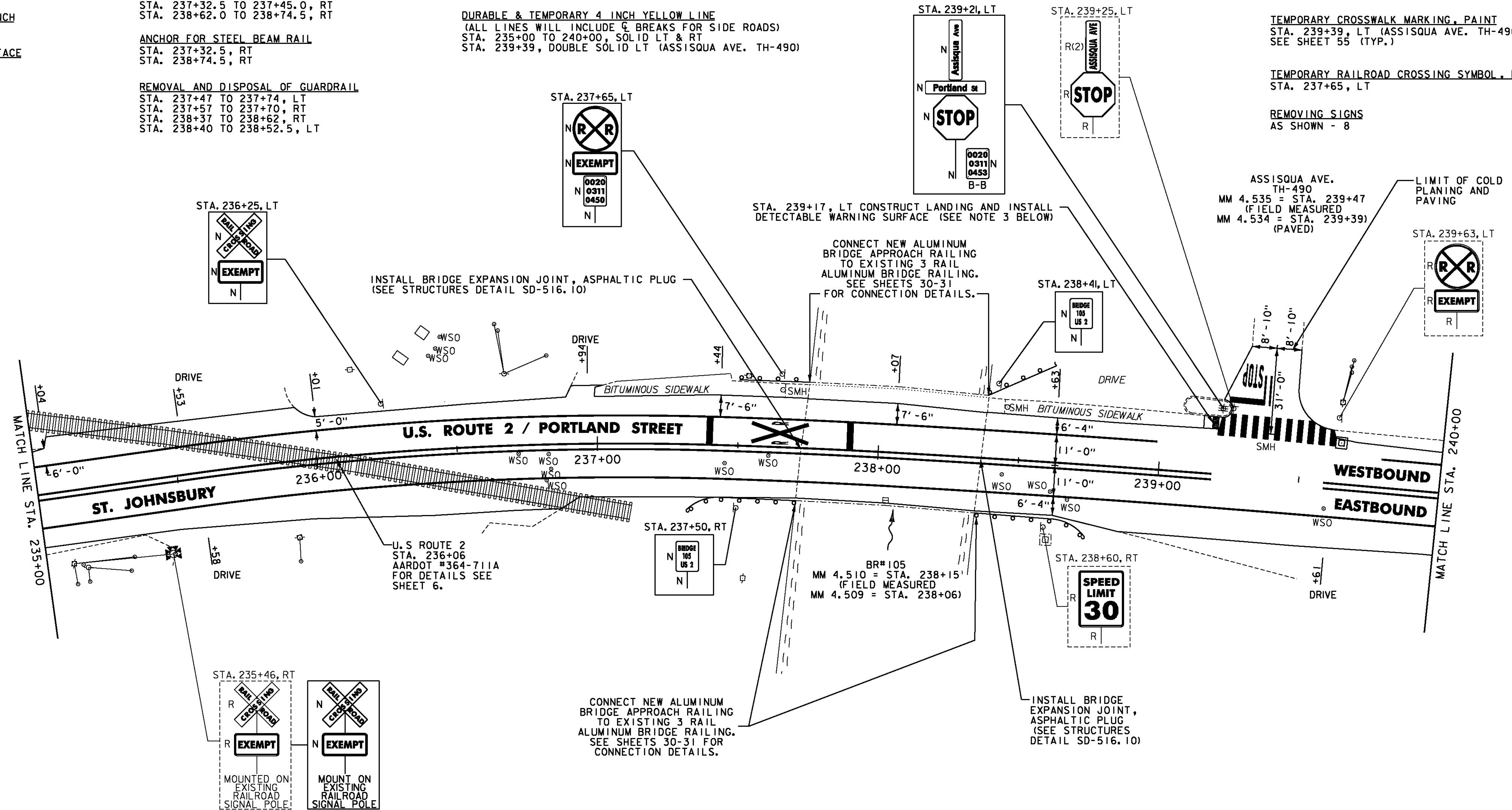
DURABLE CROSSWALK MARKING, TYPE A TAPE
STA. 239+39, LT (ASSISQUA AVE. TH-490)
SEE SHEET 55 (TYP.)

DURABLE RAILROAD CROSSING SYMBOL, TYPE D TAPE
STA. 237+65, LT

TEMPORARY CROSSWALK MARKING, PAINT
STA. 239+39, LT (ASSISQUA AVE. TH-490)
SEE SHEET 55 (TYP.)

TEMPORARY RAILROAD CROSSING SYMBOL, PAINT
STA. 237+65, LT

REMOVING SIGNS
AS SHOWN - 8



- NOTES:
- FOR LEGENDS, SEE SHEET 3.
 - ALL EXISTING SIGNS NOT SHOWN ON THE PLANS SHALL BE RETAINED.
 - THE SIDEWALK "LANDINGS" NOTED CONSIST OF THE REMOVAL AND REPLACEMENT OF A SINGLE SLAB OF CONCRETE SIDEWALK IN ORDER TO INSTALL A NEW DETECTABLE WARNING SURFACE. SEE SHEETS 12-25.

NOT TO SCALE

PROJECT LAYOUT SHEET #23	PROJECT NAME: ST JOHNSBURY - LYNDON	PLOT DATE: 5/5/2014
	PROJECT NUMBER: STP 2936(1)	DRAWN BY: D. DRAPER
	FILE NAME: pllc308.dgn	CHECKED BY: J. LITTLE
	PROJECT LEADER: G. EDWARDS	SHEET 85 OF 250
	DESIGNED BY: D. DRAPER	

