

CHANGING ELEVATION OF DIS, CBS OR MHS
SEE SHEET 27

REHAB,
DIS, CBS OR MHS, CLASS I, II OR III
SEE SHEETS 27-28

CHANGING ELEVATION OF SEWER MANHOLES
SEE SHEET 28

CAST-IN-PLACE CONCRETE CURB, TYPE B
STA. 201+96, RT
STA. 203+83, RT
STA. 204+67, RT

REMOVAL OF EXISTING CURB
STA. 201+96, RT
STA. 203+83, RT
STA. 204+67, RT

PORTLAND CEMENT
CONCRETE SIDEWALK, 5 INCH
STA. 201+96, RT
STA. 202+76, RT
STA. 203+83, RT
STA. 204+67, RT

DETECTABLE WARNING SURFACE
STA. 201+96, RT
STA. 202+76, RT
STA. 203+83, RT
STA. 204+67, RT

ADJUST ELEVATION OF VALVE BOX
SEE SHEETS 28-29

DURABLE & TEMPORARY 4 INCH WHITE LINE
(ALL LINES WILL INCLUDE EDGE LINE BREAKS
AND RADII FOR SIDE ROADS)
STA. 200+00 TO 205+00, SOLID LT & RT
STA. 202+27, SOLID RT (EDGELINES, WASHINGTON AVE. TH-518)
STA. 203+86, SOLID LT (EDGELINES, WEEKS CT. TH-520)
STA. 204+26, SOLID RT (EDGELINES, CALEDONIA ST. TH-516)

DURABLE & TEMPORARY 4 INCH YELLOW LINE
(ALL LINES WILL INCLUDE C BREAKS FOR SIDE ROADS)
STA. 200+00 TO 205+00, DOUBLE SOLID LT
STA. 202+27, DOUBLE SOLID RT (WASHINGTON AVE. TH-518)
STA. 203+86, DOUBLE SOLID LT (WEEKS CT. TH-520)
STA. 204+26, DOUBLE SOLID RT (CALEDONIA ST. TH-516)

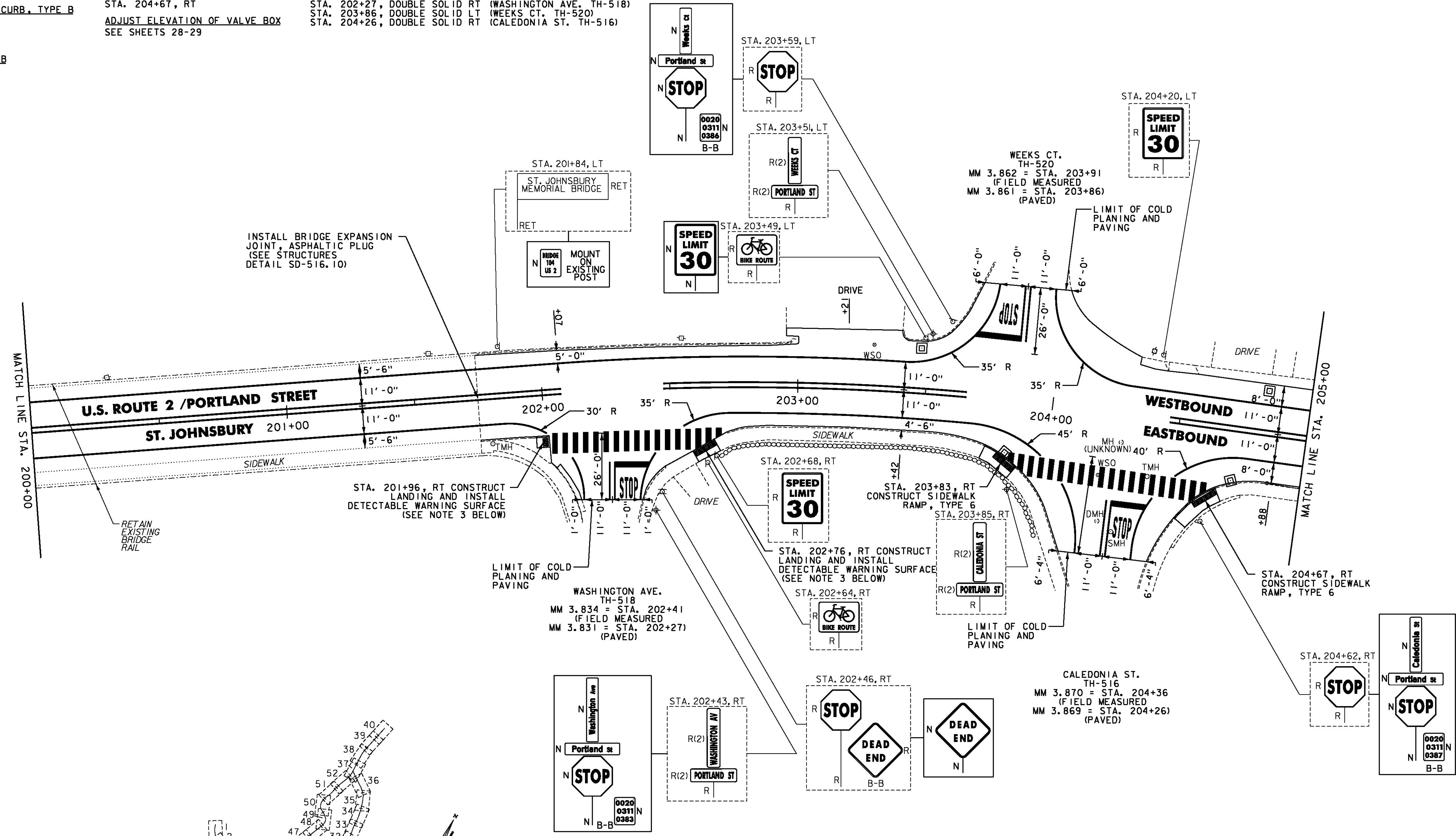
DURABLE & TEMPORARY 24 INCH STOP BAR
STA. 202+27, RT (WASHINGTON AVE. TH-518)
STA. 203+86, LT (WEEKS CT. TH-520)
STA. 204+26, RT (CALEDONIA ST. TH-516)

DURABLE & TEMPORARY LETTER OR SYMBOL
STA. 202+27, RT "STOP" (WASHINGTON AVE. TH-518)
STA. 203+86, LT "STOP" (WEEKS CT. TH-520)
STA. 204+26, RT "STOP" (CALEDONIA ST. TH-516)

DURABLE CROSSWALK MARKING, TYPE A TAPE
STA. 202+27, RT (WASHINGTON AVE. TH-518)
STA. 204+26, RT (CALEDONIA ST. TH-516)
SEE SHEET 55 (TYP.)

REMOVING SIGNS
AS SHOWN - 20

TEMPORARY CROSSWALK MARKING, PAINT
STA. 202+27, RT (WASHINGTON AVE. TH-518)
STA. 204+26, RT (CALEDONIA ST. TH-516)
SEE SHEET 55 (TYP.)



INSTALL BRIDGE EXPANSION
JOINT, ASPHALTIC PLUG
(SEE STRUCTURES
DETAIL SD-516.10)

MOUNT
ON
EXISTING
POST

WEEKS CT.
TH-520
MM 3.862 = STA. 203+91
(FIELD MEASURED)
MM 3.861 = STA. 203+86
(PAVED)

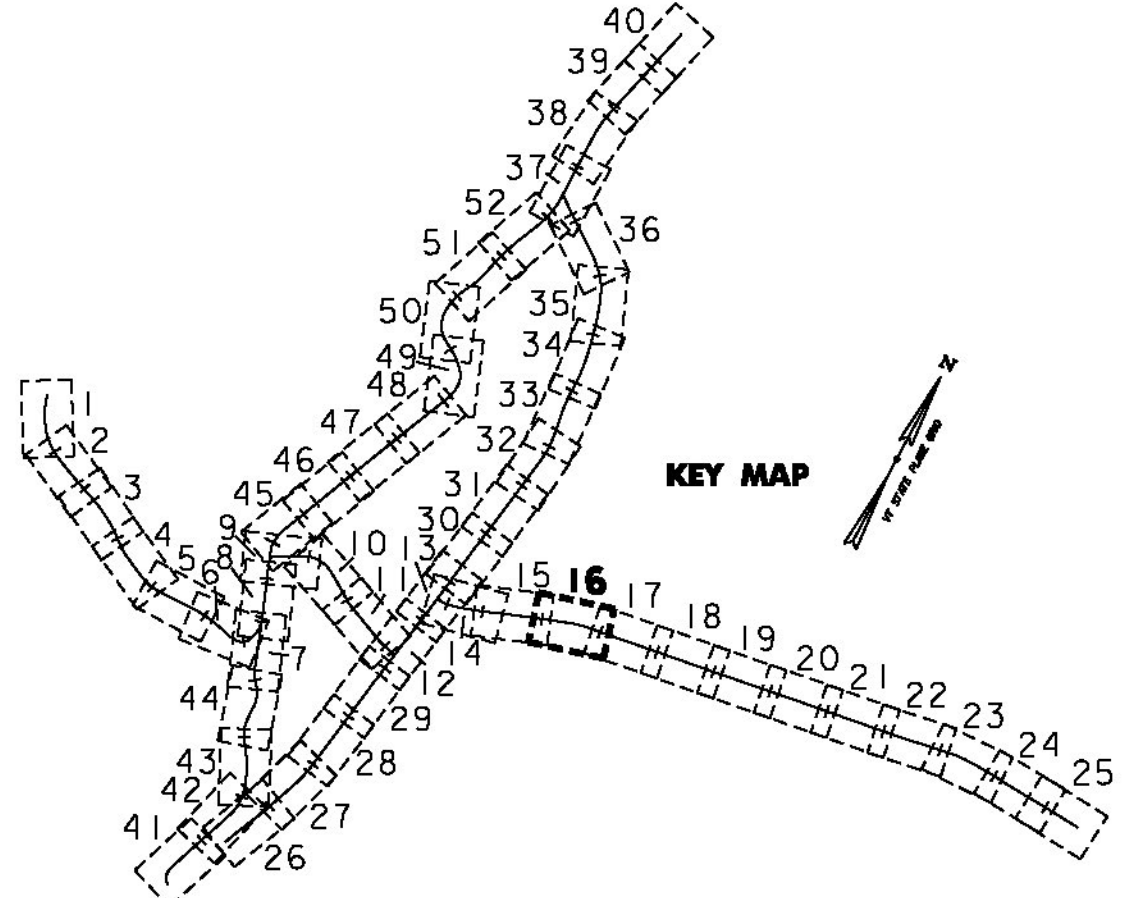
STA. 201+96, RT CONSTRUCT
LANDING AND INSTALL
DETECTABLE WARNING SURFACE
(SEE NOTE 3 BELOW)

STA. 202+76, RT CONSTRUCT
LANDING AND INSTALL
DETECTABLE WARNING SURFACE
(SEE NOTE 3 BELOW)

WASHINGTON AVE.
TH-518
MM 3.834 = STA. 202+41
(FIELD MEASURED)
MM 3.831 = STA. 202+27
(PAVED)

CALEDONIA ST.
TH-516
MM 3.870 = STA. 204+36
(FIELD MEASURED)
MM 3.869 = STA. 204+26
(PAVED)

- NOTES:
- FOR LEGENDS, SEE SHEET 3.
 - ALL EXISTING SIGNS NOT SHOWN ON THE PLANS SHALL BE RETAINED.
 - THE SIDEWALK "LANDINGS" NOTED CONSIST OF THE REMOVAL AND REPLACEMENT OF A SINGLE SLAB OF CONCRETE SIDEWALK IN ORDER TO INSTALL A NEW DETECTABLE WARNING SURFACE. SEE SHEETS 12-25.



NOT TO SCALE

PROJECT LAYOUT SHEET #16	PROJECT NAME: ST JOHNSBURY - LYNDON
	PROJECT NUMBER: STP 2936(I)
FILE NAME: pllc308.dgn	PLOT DATE: 5/5/2014
PROJECT LEADER: G. EDWARDS	DRAWN BY: D. DRAPER
DESIGNED BY: D. DRAPER	CHECKED BY: J. LITTLE
	SHEET 78 OF 250

