

CHANGING ELEVATION OF DIS. CBS OR MHS
SEE SHEET 27

REHAB.
DIS. CBS OR MHS, CLASS I, II OR III
SEE SHEETS 27-28

CHANGING ELEVATION OF SEWER MANHOLES
SEE SHEET 28

VERTICAL GRANITE CURB

U.S. ROUTE 5
STA. 90+92, LT
STA. 91+74, LT

REMOVAL OF EXISTING CURB

U.S. ROUTE 5
STA. 90+92, LT
STA. 91+74, LT

PORTLAND CEMENT
CONCRETE SIDEWALK, 5 INCH

U.S. ROUTE 5
STA. 90+68, RT
STA. 90+92, LT
STA. 91+24, RT
STA. 91+49, RT
STA. 91+74, LT
STA. 93+74, LT
STA. 93+82, RT
STA. 94+85, LT

DETECTABLE WARNING SURFACE

U.S. ROUTE 5
STA. 90+68, RT
STA. 90+92, LT
STA. 91+24, RT
STA. 91+49, RT
STA. 91+74, LT
STA. 93+74, LT
STA. 93+82, RT
STA. 94+85, LT

ADJUST ELEVATION OF VALVE BOX
SEE SHEETS 28-29

DURABLE & TEMPORARY 4 INCH YELLOW LINE

(ALL LINES WILL INCLUDE $\frac{1}{4}$ BREAKS FOR SIDE
ROADS & CROSSWALKS)

U.S. ROUTE 5
STA. 90+00 TO 90+60, SOLID LT & RT
STA. 91+02, DOUBLE SOLID RT (DEPOT SQ. TH-542)
STA. 91+82, TO 94+64, DOUBLE SOLID LT
STA. 94+64 TO 95+00, DOUBLE SOLID RT
U.S. ROUTE 2
STA. 190+00 TO 190+70, DOUBLE SOLID LT

DURABLE & TEMPORARY 24 INCH STOP BAR

U.S. ROUTE 5
STA. 90+59, RT
STA. 91+02, RT (DEPOT SQ. TH-542)
STA. 91+82, LT
U.S. ROUTE 2
STA. 190+69, LT-RT

DURABLE LETTER OR SYMBOL, TYPE D TAPE

U.S. ROUTE 5
STA. 90+05, RT "ONLY" (2)
STA. 90+50, RT "STOP" (2)
STA. 91+02, RT "STOP" (DEPOT SQ. TH-542)
STA. 91+91, LT "STOP"
STA. 93+43, RT HANDICAP SYMBOL
STA. 94+11, RT HANDICAP SYMBOL
U.S. ROUTE 2
STA. 190+60, RT "STOP" (2)

DURABLE CROSSWALK MARKING, TYPE A TAPE

U.S. ROUTE 5
STA. 90+68, RT TO 90+92, LT
STA. 91+02, RT (DEPOT SQ. TH-542)
STA. 91+49, RT TO 91+74, LT
STA. 93+74, LT TO 93+82, RT
STA. 94+85, LT TO 95+02, RT
U.S. ROUTE 2
STA. 190+78, LT-RT
SEE SHEET 55 (TYP.)

TEMPORARY LETTER OR SYMBOL, PAINT

U.S. ROUTE 5
STA. 90+50, RT "STOP" (2)
STA. 91+02, RT "STOP" (DEPOT SQ. TH-542)
STA. 91+91, LT "STOP"
STA. 93+43, RT HANDICAP SYMBOL
STA. 94+11, RT HANDICAP SYMBOL
U.S. ROUTE 2
STA. 190+60, RT "STOP" (2)

TEMPORARY CROSSWALK MARKING, PAINT

U.S. ROUTE 5
STA. 90+68, RT TO 90+92, LT
STA. 91+02, RT (DEPOT SQ. TH-542)
STA. 91+49, RT TO 91+74, LT
STA. 93+74, LT TO 93+82, RT
STA. 94+85, LT TO 95+02, RT
U.S. ROUTE 2
STA. 190+78, LT-RT
SEE SHEET 55 (TYP.)

SPECIAL PROVISION (PARKING METER POST)

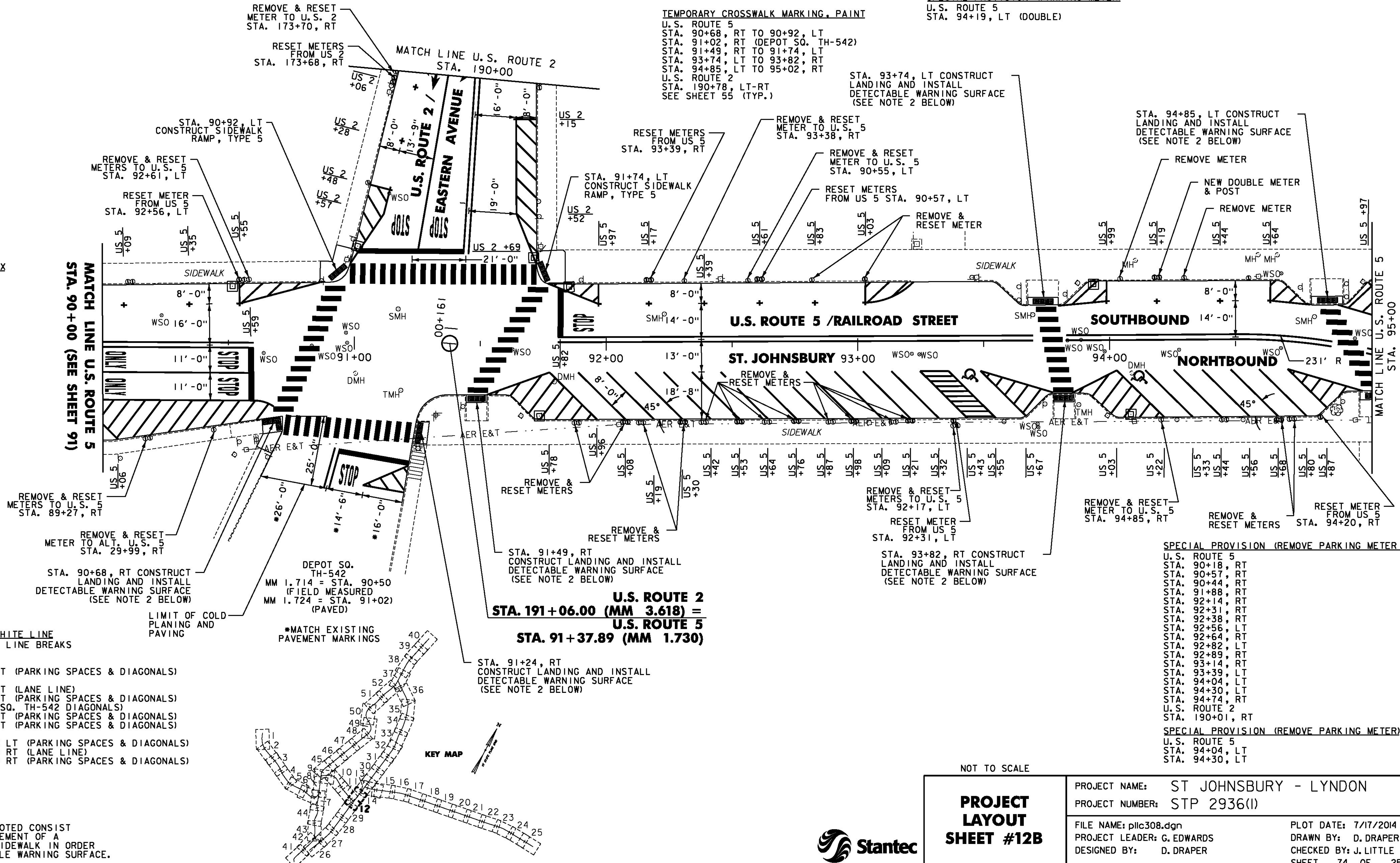
U.S. ROUTE 5
STA. 90+55, LT
STA. 92+08, RT
STA. 92+17, LT
STA. 92+30, RT
STA. 92+53, RT
STA. 92+61, LT
STA. 92+76, RT
STA. 92+98, RT
STA. 93+03, LT
STA. 93+21, RT
STA. 93+38, RT
STA. 94+19, LT
STA. 94+68, RT
STA. 94+85, RT
U.S. ROUTE 2
STA. 190+06, RT

SPECIAL PROVISION (REMOVE & RESET
PARKING METER)

U.S. ROUTE 5
STA. 90+55, LT
STA. 92+08, RT
STA. 92+17, LT
STA. 92+30, RT
STA. 92+53, RT
STA. 92+61, LT
STA. 92+76, RT
STA. 92+98, RT
STA. 93+03, LT
STA. 93+21, RT
STA. 93+38, RT
STA. 94+19, LT
STA. 94+68, RT
STA. 94+85, RT
U.S. ROUTE 2
STA. 190+06, RT

SPECIAL PROVISION (PARKING METER)

U.S. ROUTE 5
STA. 94+19, LT (DOUBLE)



DURABLE & TEMPORARY 4 INCH WHITE LINE

(ALL LINES WILL INCLUDE EDGE LINE BREAKS
AND RADII FOR SIDE ROADS)

U.S. ROUTE 5
STA. 90+00 TO 90+86, SOLID LT (PARKING SPACES & DIAGONALS)
SEE SHEETS 55 TO 56 (TYP.)
STA. 90+00 TO 90+58, SOLID RT (LANE LINE)
STA. 90+00 TO 90+67, SOLID RT (PARKING SPACES & DIAGONALS)
STA. 91+02, SOLID RT (DEPOT SQ. TH-542 DIAGONALS)
STA. 91+53 TO 94+99, SOLID RT (PARKING SPACES & DIAGONALS)
STA. 91+77 TO 95+00, SOLID LT (PARKING SPACES & DIAGONALS)
U.S. ROUTE 2
STA. 190+00 TO 190+70, SOLID LT (PARKING SPACES & DIAGONALS)
STA. 190+00 TO 190+68, SOLID RT (LANE LINE)
STA. 190+00 TO 190+68, SOLID RT (PARKING SPACES & DIAGONALS)

NOTES:

- FOR LEGENDS, SEE SHEET 3.
- THE SIDEWALK "LANDINGS" NOTED CONSIST OF THE REMOVAL AND REPLACEMENT OF A SINGLE SLAB OF CONCRETE SIDEWALK IN ORDER TO INSTALL A NEW DETECTABLE WARNING SURFACE. SEE SHEETS 12-25.

NOT TO SCALE

PROJECT LAYOUT SHEET #12B	PROJECT NAME: ST JOHNSBURY - LYNDON
	PROJECT NUMBER: STP 2936(1)
FILE NAME: pllc308.dgn	PLOT DATE: 7/17/2014
PROJECT LEADER: G. EDWARDS	DRAWN BY: D. DRAPER
DESIGNED BY: D. DRAPER	CHECKED BY: J. LITTLE
	SHEET 74 OF 250

