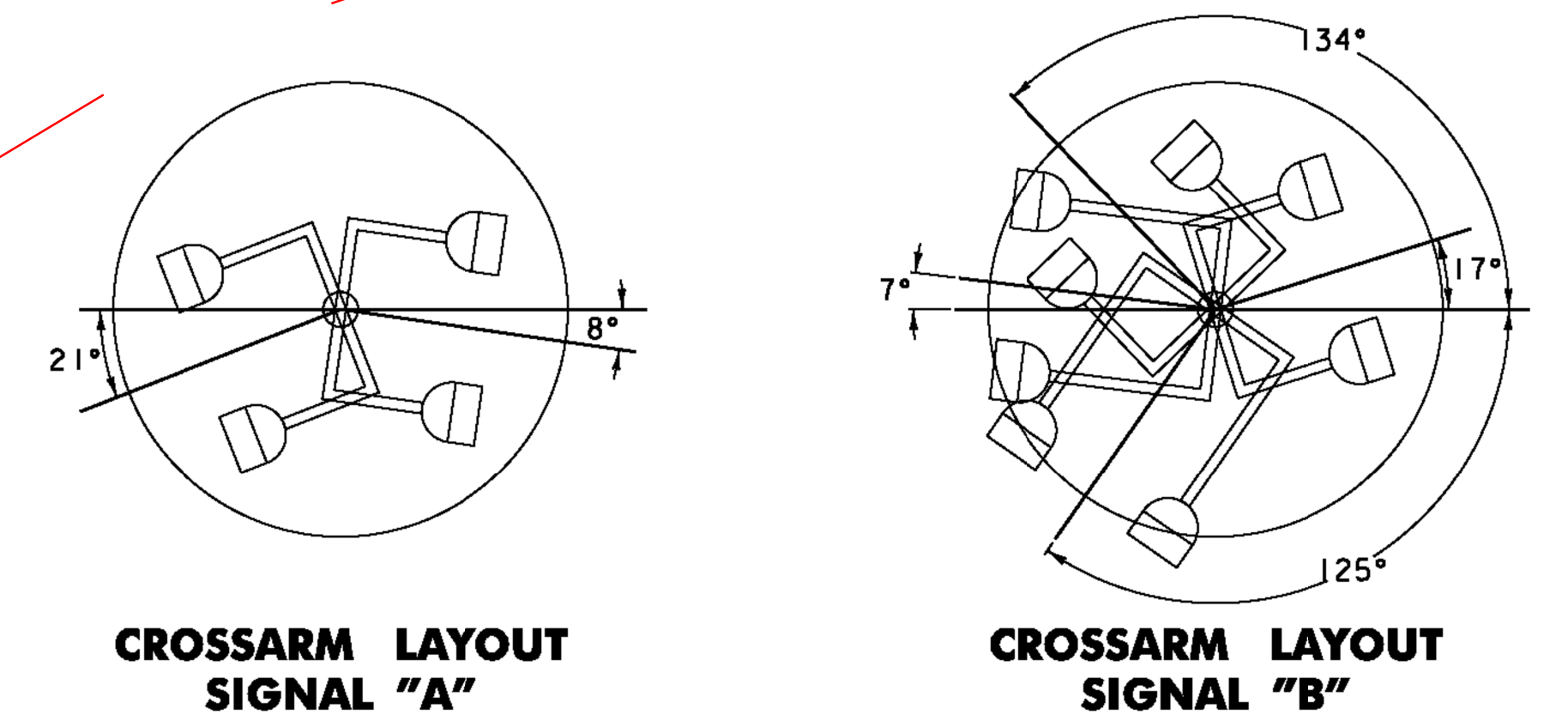
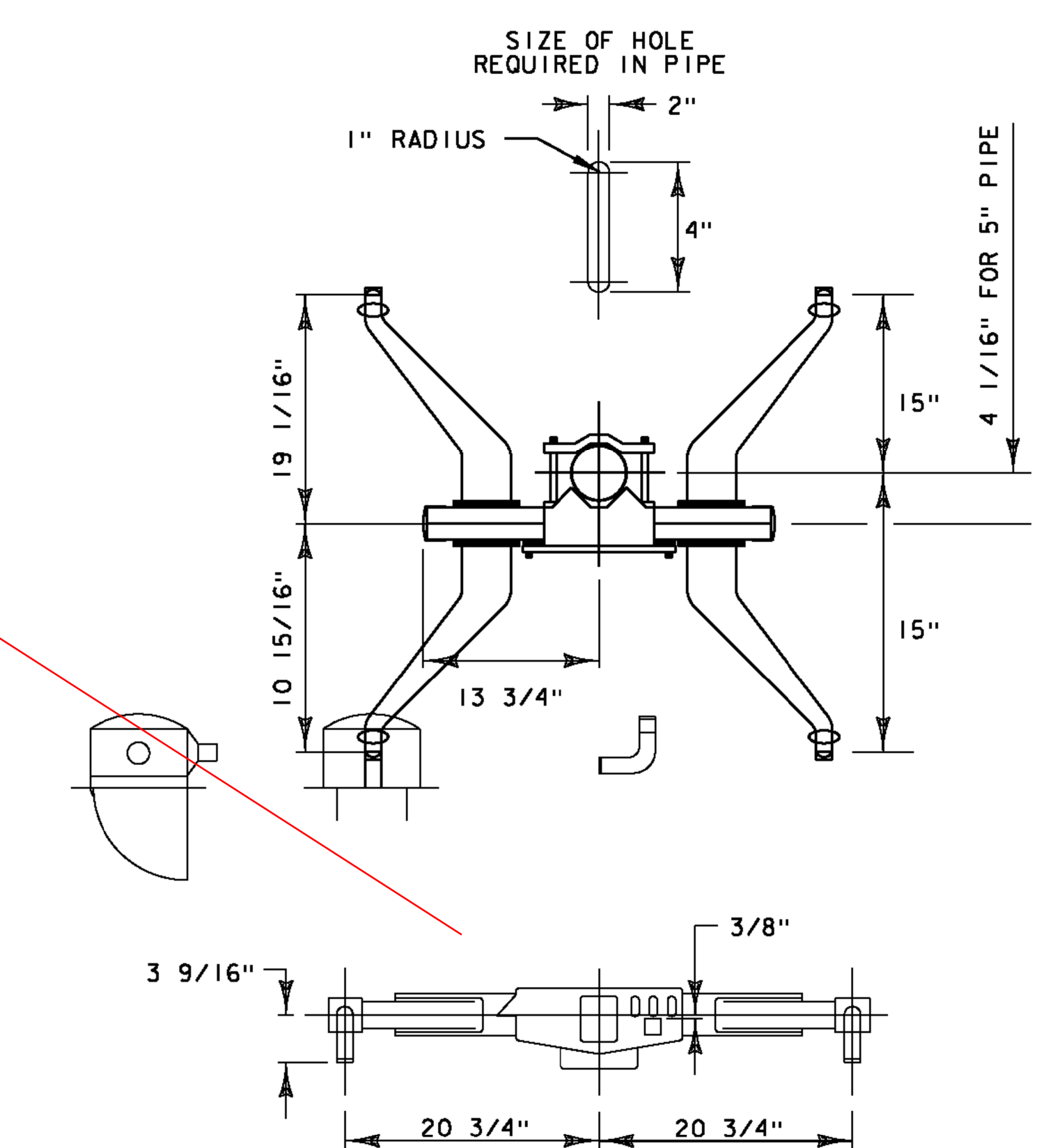
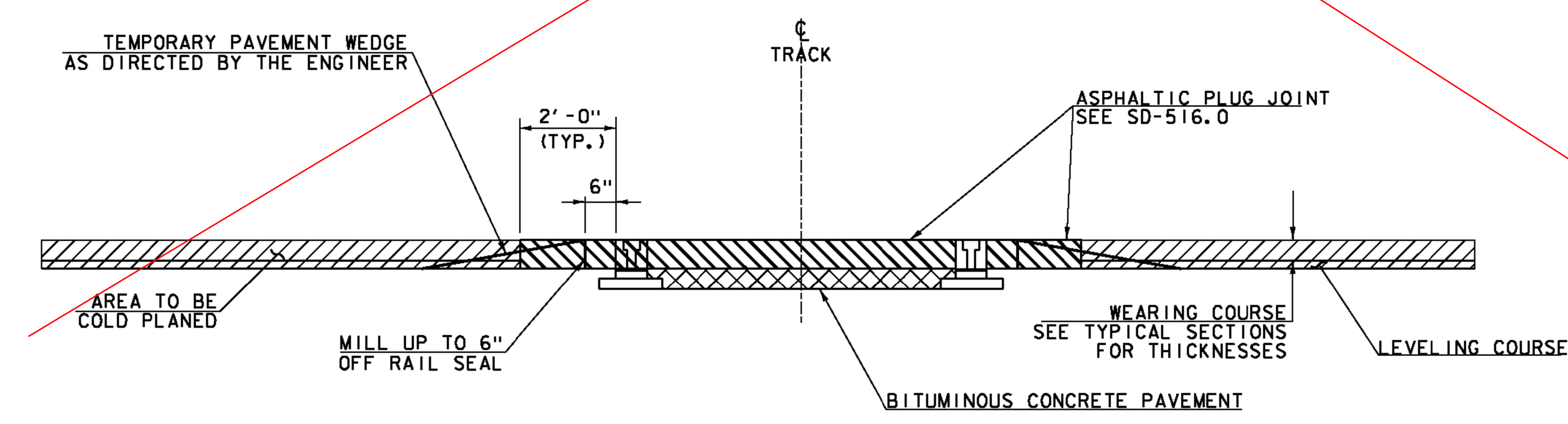


~~ITEM 900.645 SPECIAL PROVISION  
(RAIL-HIGHWAY CROSSING ACTIVE WARNING SYSTEM) (AARDOT 850-917P)  
LYNDON U.S. ROUTE 5 STA. 152+10, RT~~

QUANTITY	UNIT	DESCRIPTION
12	EA	12" LED RAILROAD SIGNAL HEAD
6	EA	LAMP CROSSARM WITH BRACKETS
150	LF	SIGNAL WIRE
1	EA	ELECTRONIC WARNING BELL

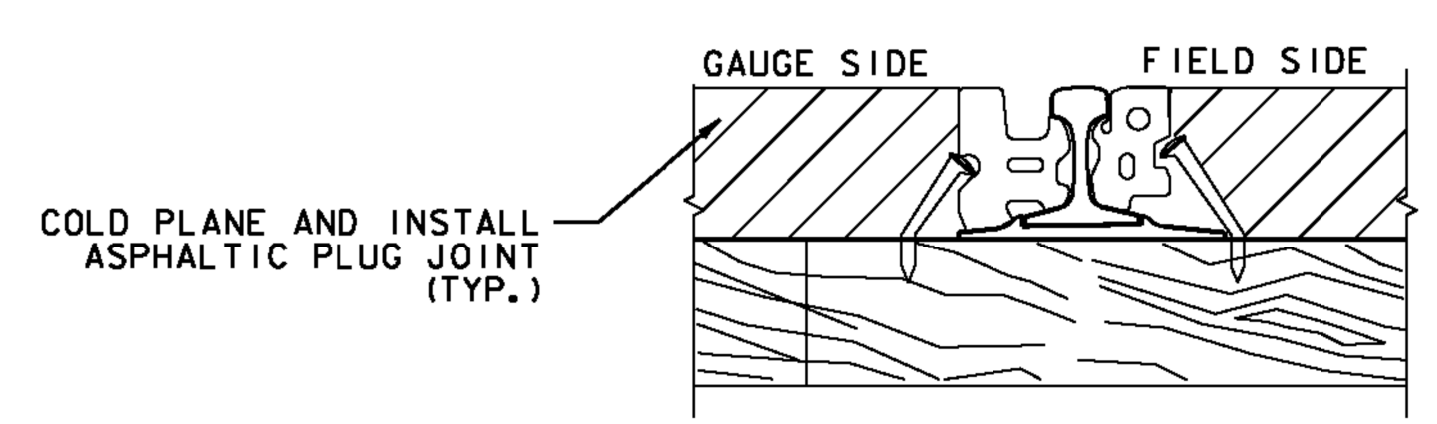


**SIGNAL LAYOUT  
DEPOT STREET AARDOT #850-917P  
LYNDON U.S. ROUTE 5 STA 152+10, RT**



- NOTES - AARDOT #850-917P**
- COLD PLANE UP TO, AND IN BETWEEN THE EXISTING RAILS.
  - INSTALL NEW COMMERCIAL FLANGEWAY RAIL SEAL MATERIAL.
  - TYPE AND DESIGN OF COMMERCIAL FLANGEWAY MATERIALS SHALL RECEIVE APPROVAL FROM THE ENGINEER.
  - MANUFACTURER'S SPECIFICATIONS SHALL BE FOLLOWED FOR THE INSTALLATION OF COMMERCIAL FLANGEWAY MATERIALS.
  - ALL WORK AND FLANGEWAY MATERIALS WILL BE PAID UNDER ITEM 900.640 SPECIAL PROVISION (RUBBER RAIL SEAL).
  - SAW CUTTING SHALL NOT BE PAID SEPARATELY BUT BE INCIDENTAL TO ITEM 210.10 COLD PLANING, BITUMINOUS PAVEMENT.
  - ASPHALTIC PLUG JOINTS WILL BE PAID AS ITEM 516.10 BRIDGE EXPANSION JOINT, ASPHALTIC PLUG.
  - ALL WORK MUST BE PERFORMED WITHIN THE EXISTING RIGHT OF WAY (ROW). NO ADDITIONAL ROW HAS BEEN ACQUIRED BY THE STATE TO ACCOMMODATE CONSTRUCTION OF THE RAIL CROSSING.

NOTE: COLD PLANE TO 6 INCHES FROM RAIL SEAL. REMAINING 6 INCHES TO BE REMOVED WITH OTHER BITUMINOUS CONCRETE PAVEMENT WITHIN THE LIMITS OF THE ASPHALTIC PLUG JOINT INSTALLATION.



NOT TO SCALE

<b>RAILROAD CROSSING DETAIL SHEET #22</b>	<b>AARDOT #850-917P</b>	
	PROJECT NAME: ST JOHNSBURY - LYNDON	
	PROJECT NUMBER: STP 2936(I)	
FILE NAME: pllc308.dgn	DESIGNED BY: D. DRAPER	PLOT DATE: 5/5/2014
PROJECT LEADER: G. EDWARDS		DRAWN BY: D. DRAPER
		CHECKED BY: J. LITTLE
		SHEET 53 OF 250

