

SHOP DRAWING REVIEW

REVIEWED AS REQUIRED BY THE CONSTRUCTION CONTRACT DOCUMENTS AND APPROVED, BUT ONLY FOR CONFORMANCE TO THE DESIGN CONCEPT OF THE WORK, AND SUBJECT TO FURTHER LIMITATIONS AND REQUIREMENTS CONTAINED IN THE CONSTRUCTION CONTRACT DOCUMENTS.

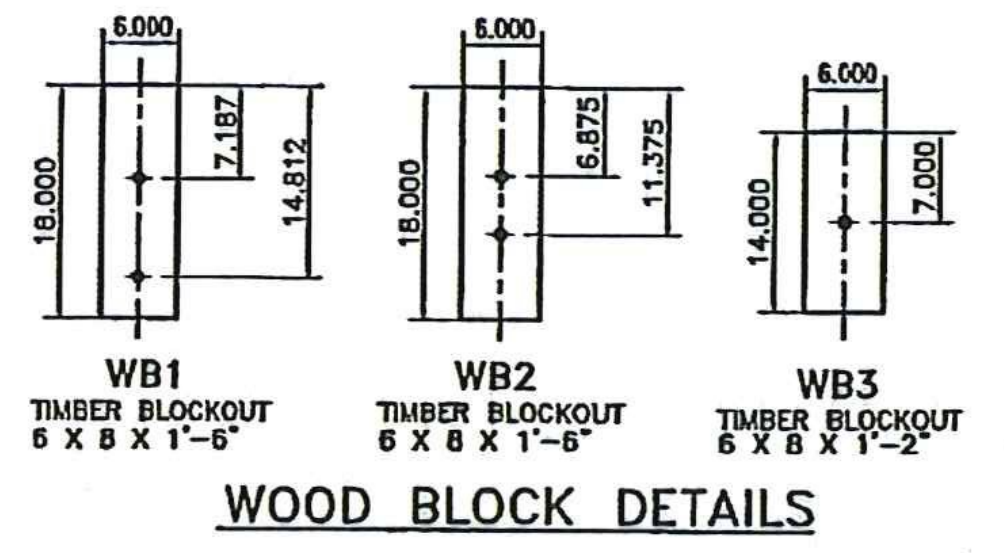
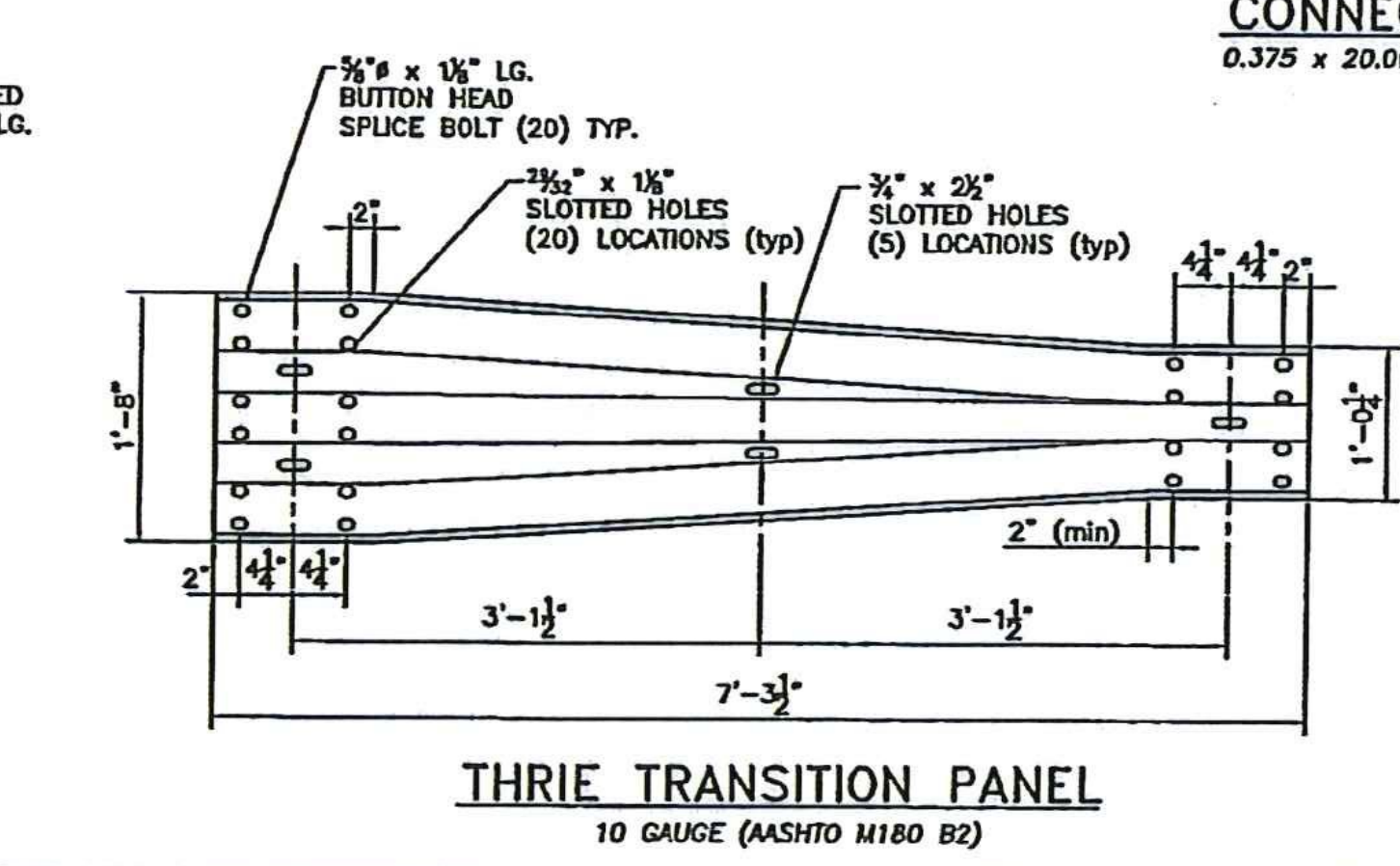
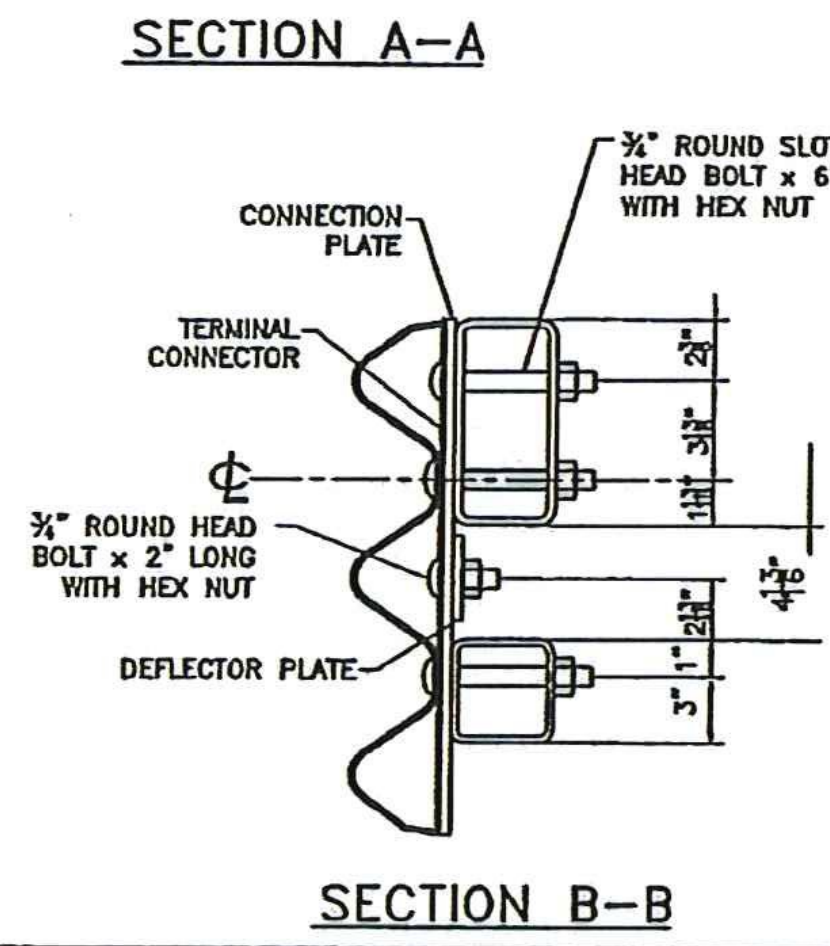
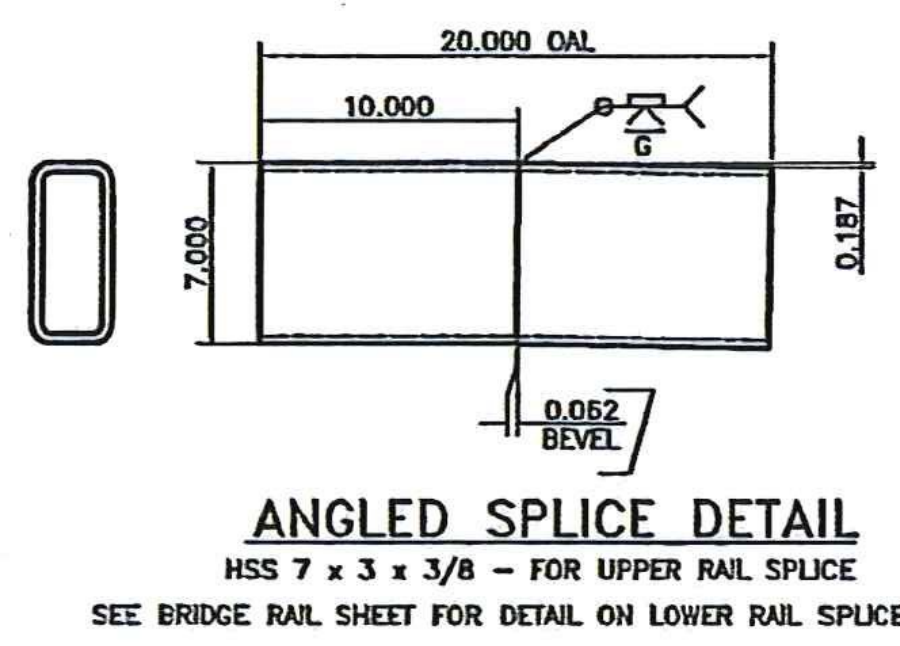
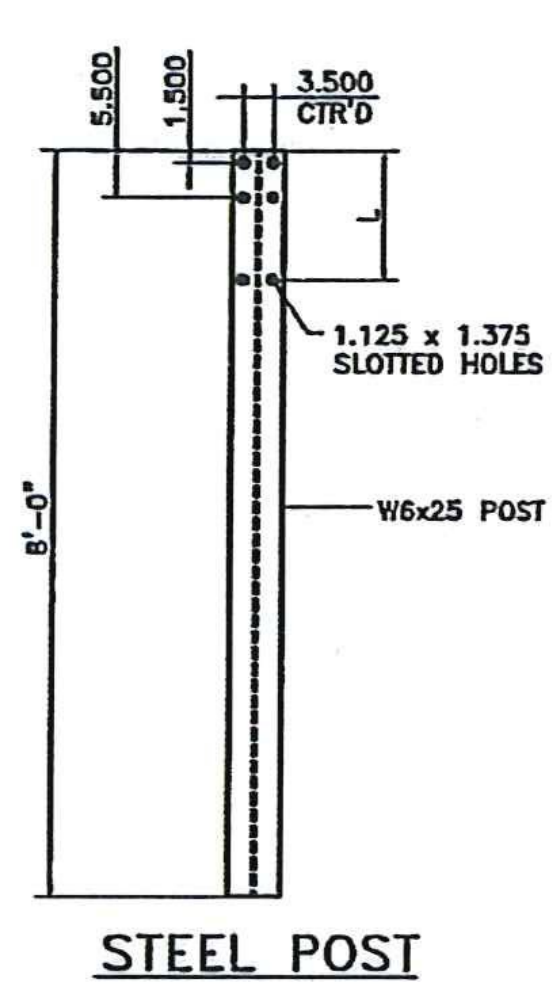
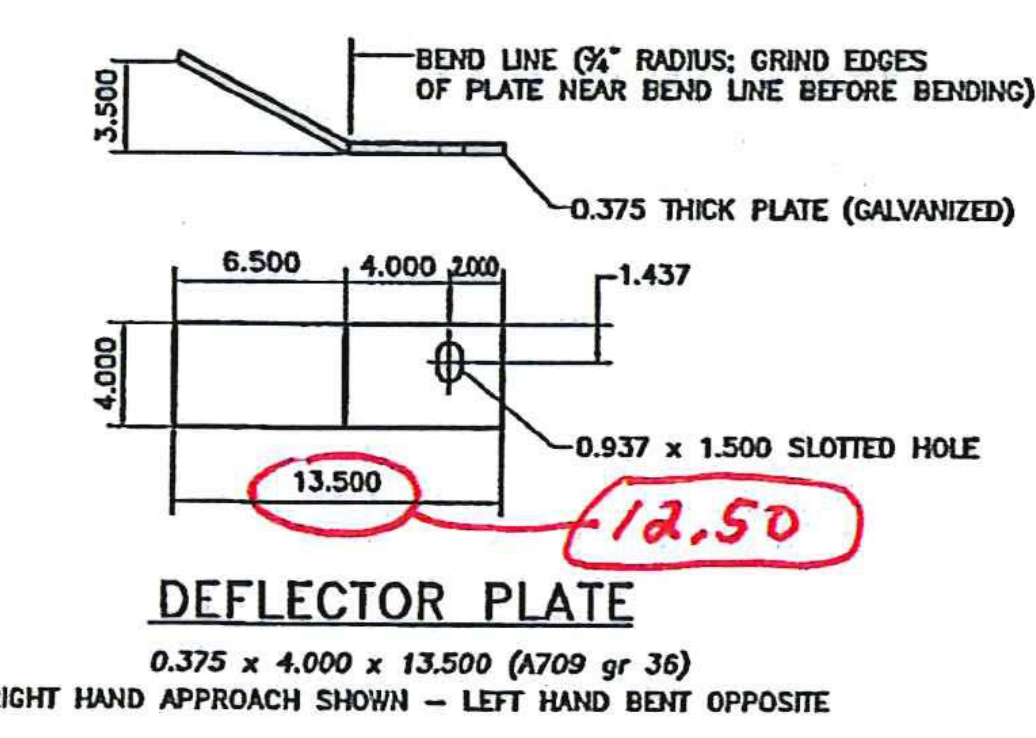
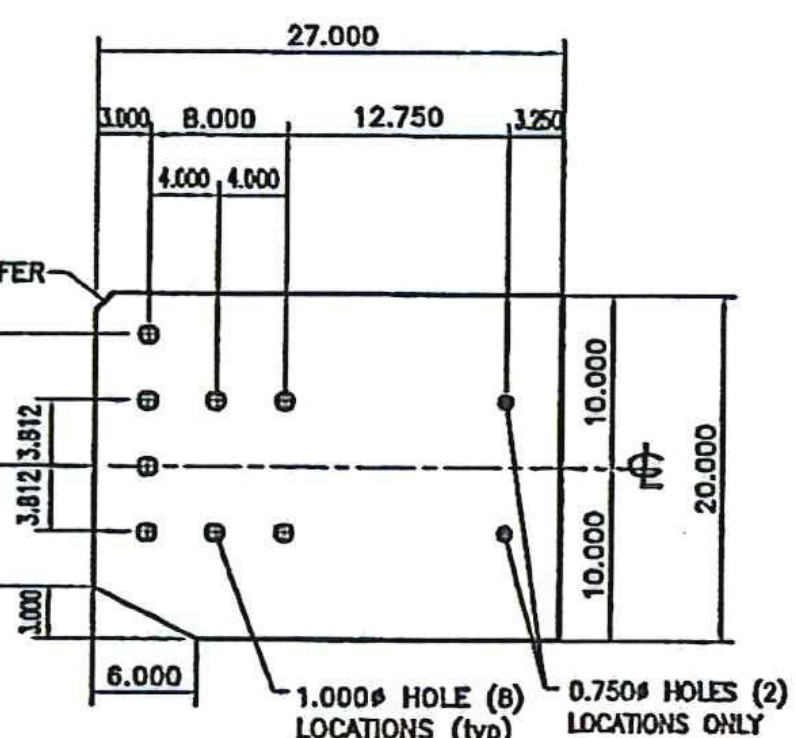
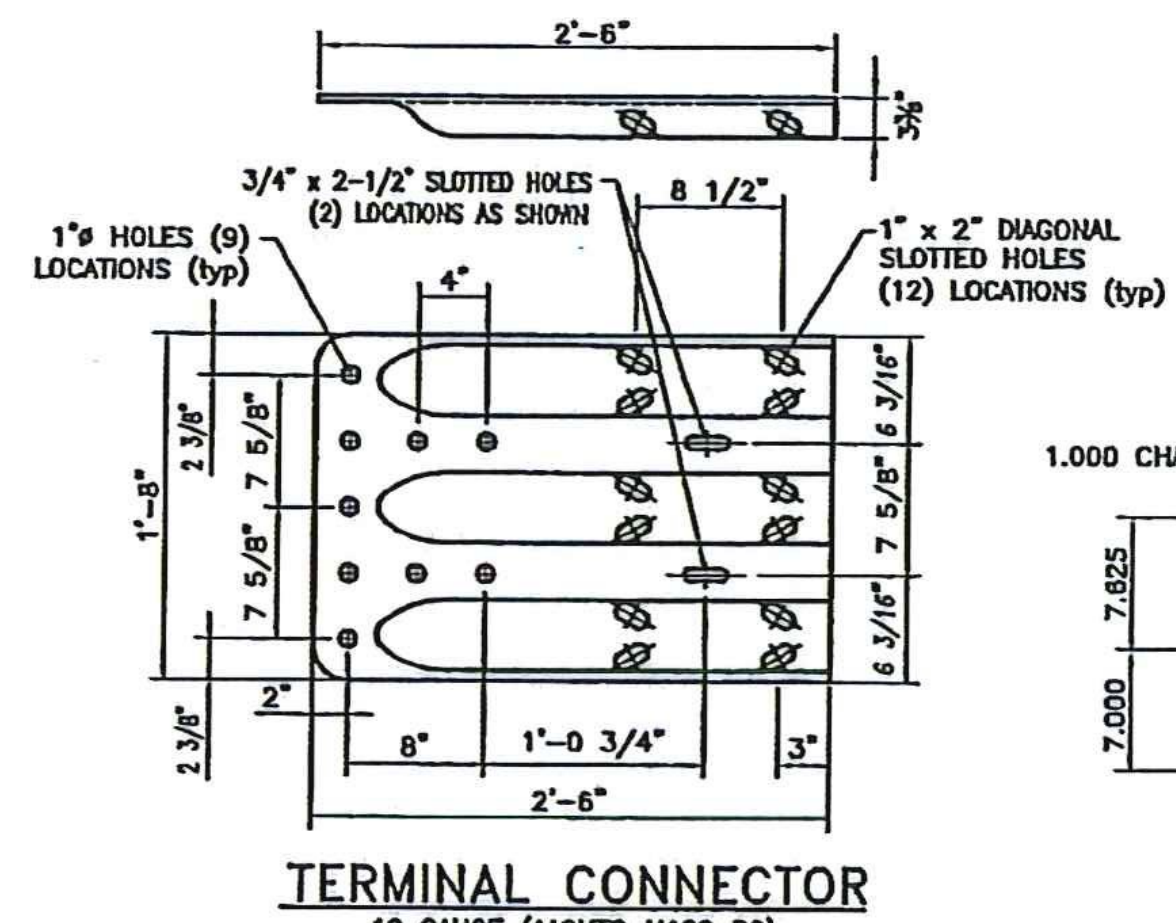
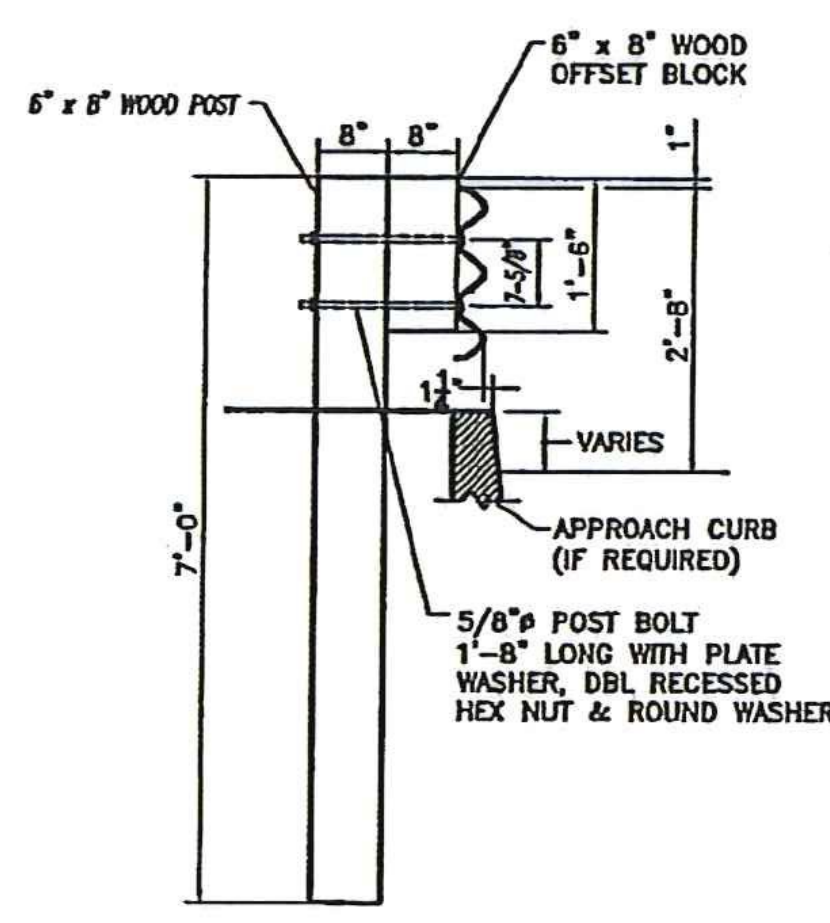
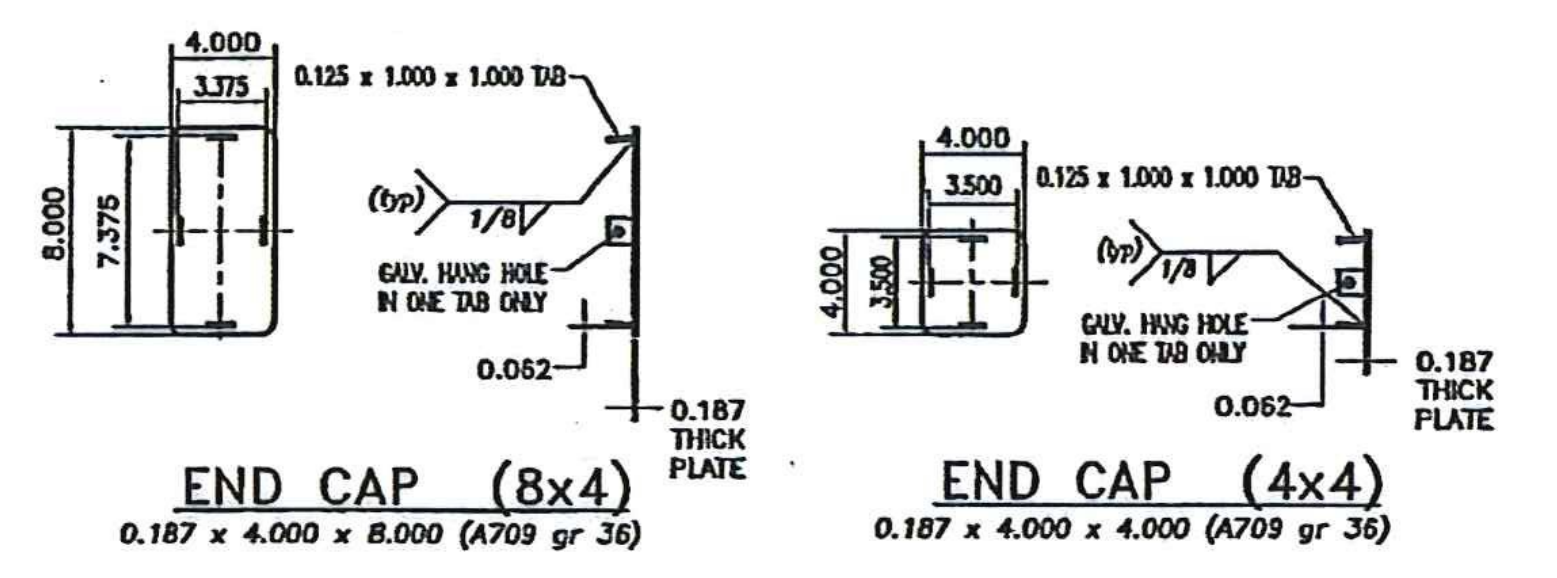
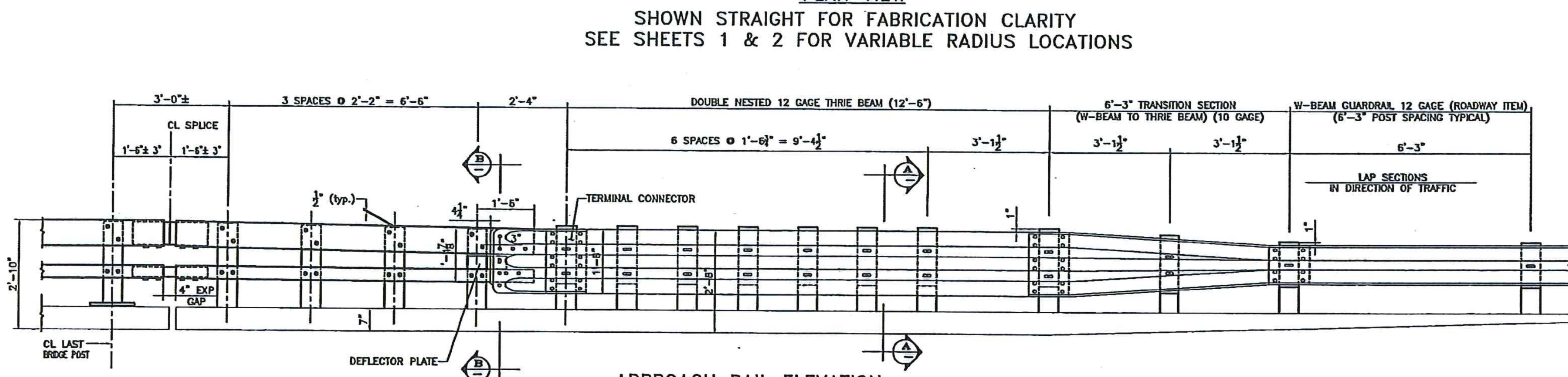
REJECTED REVISE AND RESUBMIT FURNISH AS CORRECTED

CORRECTIONS OR COMMENTS MADE ON THE SHOP DRAWINGS DURING THIS REVIEW DO NOT RELIEVE CONTRACTOR FROM COMPLIANCE WITH REQUIREMENTS OF THE DRAWINGS AND SPECIFICATIONS. THIS CHECK IS ONLY FOR REVIEW OF GENERAL CONFORMANCE WITH THE DESIGN CONCEPT OF THE PROJECT AND GENERAL COMPLIANCE WITH THE INFORMATION GIVEN IN THE CONTRACT DOCUMENTS. THE CONTRACTOR IS RESPONSIBLE FOR, CONFIRMING AND CORRELATING ALL QUANTITIES AND DIMENSIONS; SELECTING FABRICATION PROCESSES AND TECHNIQUES OF CONSTRUCTION; COORDINATING HIS WORK WITH THAT OF ALL OTHER TRADES; AND PERFORMING HIS WORK IN A SAFE AND SATISFACTORY MANNER.

Vanasse Hangen Brustlin, Inc.
 7055 US Route 7
 North Ferrisburgh, VT 05473
 802.425.7788

HUBBARDTON ER STP 0161 (26)
 Job Number: ER STP 0161 (26)
 Reviewed By: S. FARNSWORTHY
 Date: 4-18-2012

- NOTES:**
1. PAYMENT FOR GUARDRAIL APPROACH SECTION - GALVANIZED NETC 2 RAIL BEAM SHALL INCLUDE THE TERMINAL CONNECTOR, THE CONNECTION PLATE, THE DEFLECTOR PLATE, RAIL, POSTS, BLOCKS AND ATTACHMENT HARDWARE.
 2. ALL APPROACH RAIL SPICES SHALL BE LAPPED IN THE DIRECTION OF TRAFFIC FLOW.
 3. TUBE AND STEEL POST MATERIALS, DIMENSION SIZES AND NOTES SHALL BE THE SAME AS THOSE OF THE BRIDGE RAIL UNLESS OTHERWISE NOTED.
 4. APPROACH RAIL BOLTS SHALL BE ASTM A307 GRADE A AND NUTS SHALL BE ASTM A291 (ASTM 563 GRADE A OR BETTER (GALVANIZED), WASHERS SHALL BE ASTM F844.
 5. WELD TOP SPLICE BAR TO FIT BEND. USE COMPLETE PENETRATION WELD (B-U2).



STEEL POST CHART

No.	L
#1	1'-3.250"
#2	1'-3.000"
#3	1'-2.687"
#4	1'-2.375"

P170 FROM Sheet 1 of 5

HIGHWAY SAFETY CORP
 GLASTONBURY, CT
 860-633-9445

ITEM 525.33 NETC 2 RAIL BRIDGE RAILING (S-360A)
 ITEM 621.72 NETC 2 RAIL APPROACH RAILING (S-360B)

HUBBARDTON, VERMONT BRIDGE 96 & 98
 ER STP 0161 (26) & ER STP 0161 (27)

CERTIFIED FABRICATOR

ISSUED FOR: **1896**

SHEET NO.: **4 of 5**

DESIGNED BY: **PAR** CHECKED BY: **PAR** DATE: **09-10-12** SCALE: **NONE** SIZE: **D**

No.	Remarks	Date
0	Initial submittal	
	REVISIONS	