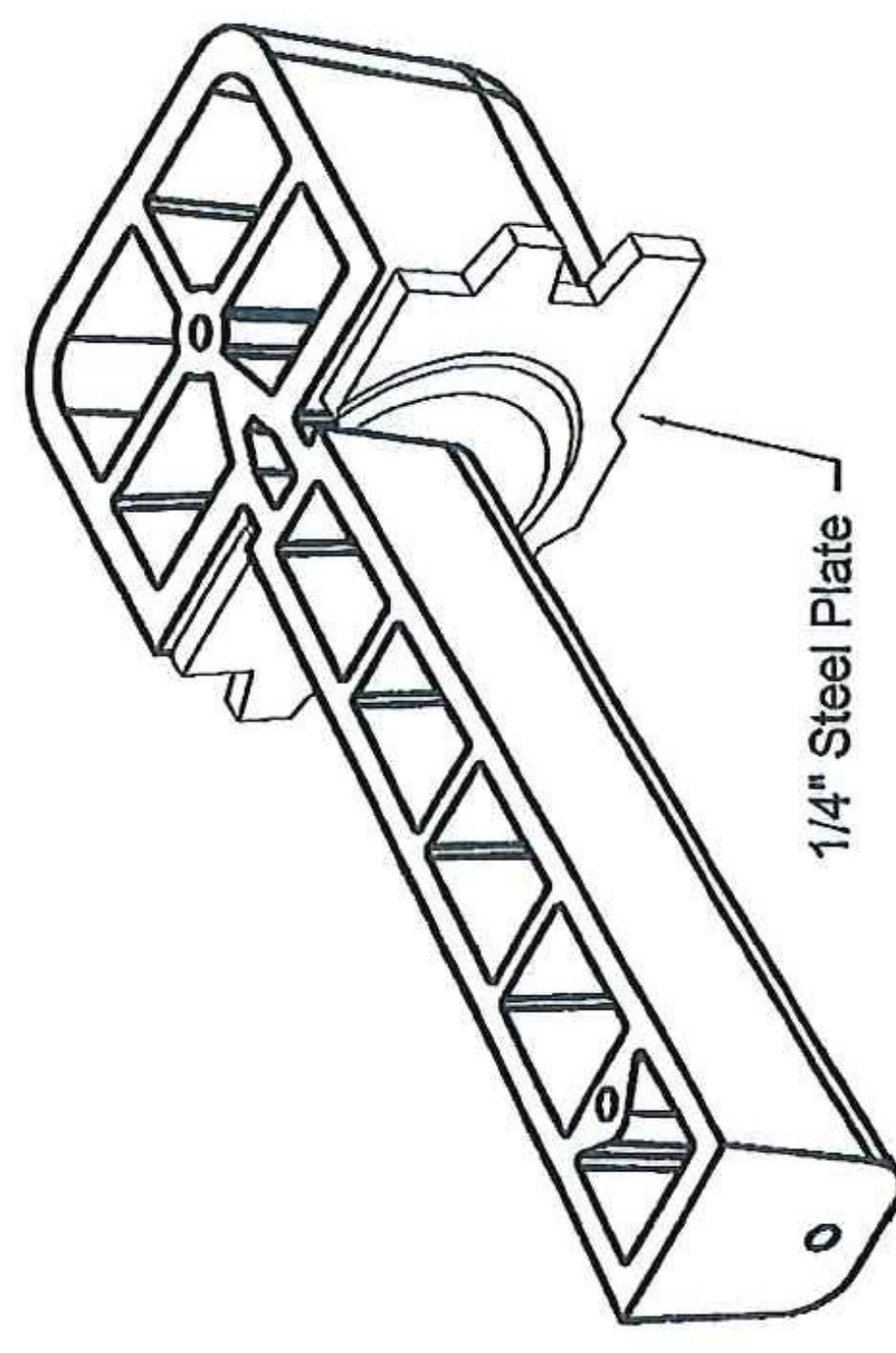
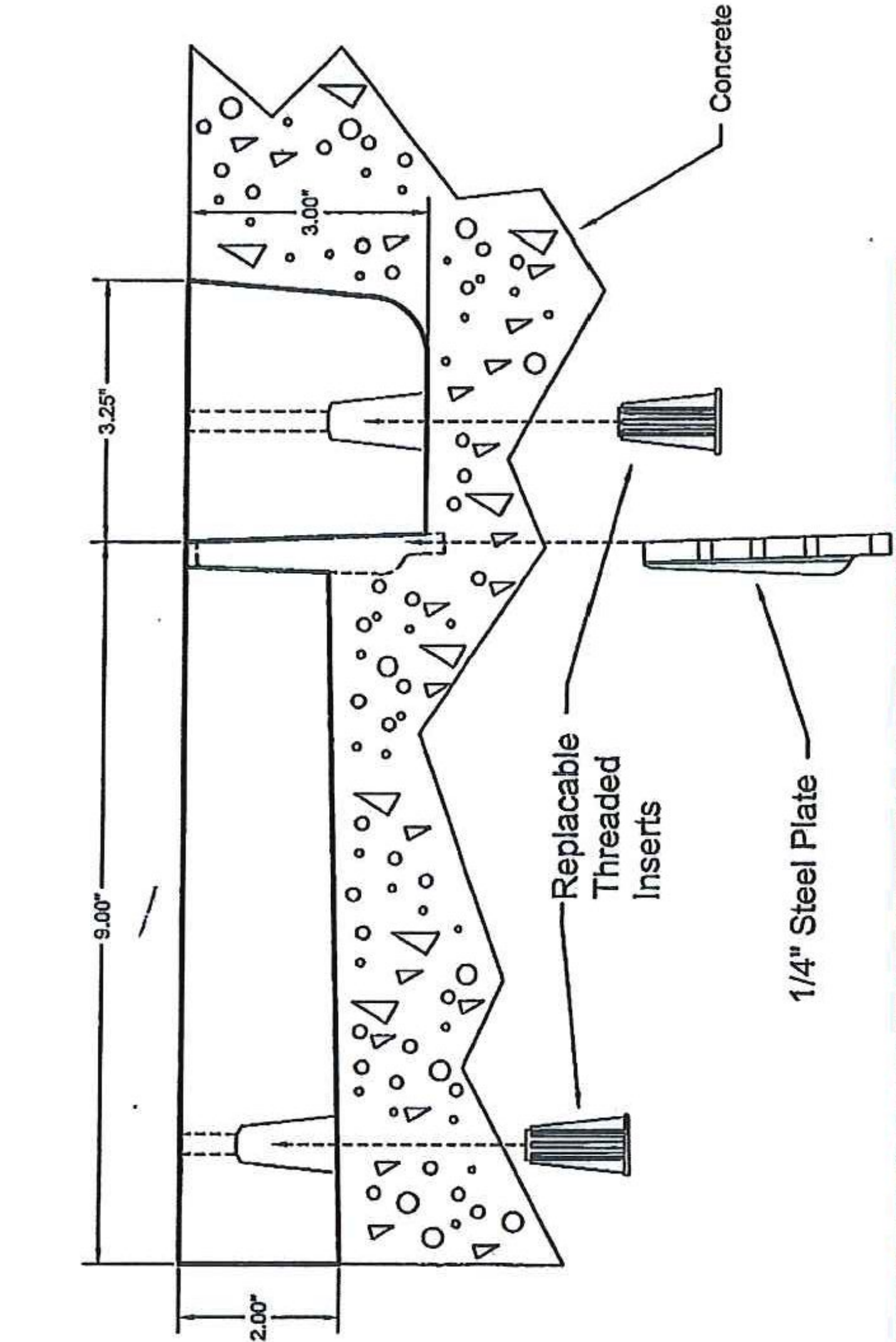
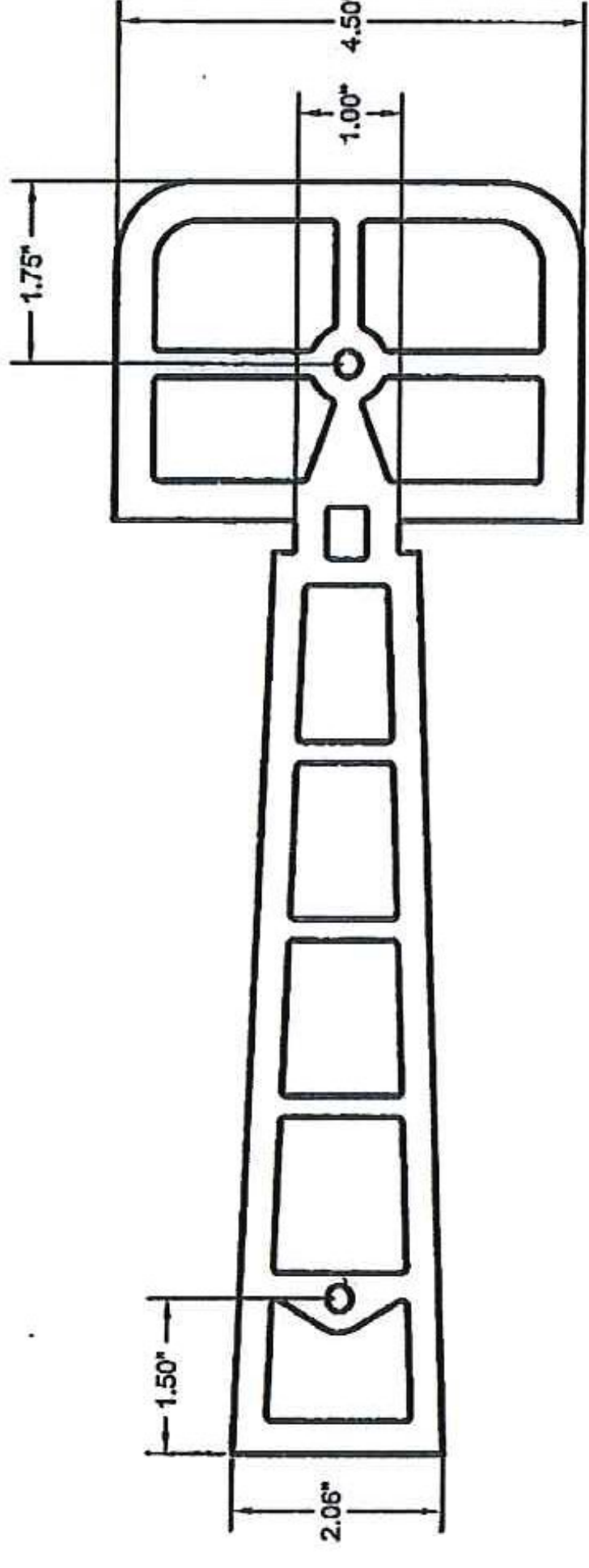


Fax to:	Customer	Approved/Notes	PA Insert Corp PO Box 199 Spring City PA 19475 tel: 610-948-9688 fax: 610-948-9750 email: sales@pennsylvaniainsert.com web: www.pennsylvaniainsert.com
Fax#	Project		
From	Job#	Ship Date	
Date	PA Insert Quote/Order#	Page	of

### BOLT POCKET FORMER (for up to 1" bolt)

- Made from durable Urethane for reusability
- Ribbed construction increases strength
- \*Replacable 1/4" Threaded Inserts
- \*\*1/4" Galvanized Steel Plate Standard
- Available with magnets to attach to form



**SHOP DRAWING REVIEW**

\*Threaded Inserts sold separately (Part Number 1200)  
\*\*Steel Plate stays in concrete, sold separately (Part Number 4024)

06/03/04

REVIEWED AS REQUIRED BY THE CONSTRUCTION CONTRACT DOCUMENTS AND APPROVED, BUT ONLY FOR CONFORMANCE TO THE DESIGN CONCEPT OF THE WORK, AND SUBJECT TO FURTHER LIMITATIONS AND REQUIREMENTS CONTAINED IN THE CONSTRUCTION CONTRACT DOCUMENTS

REJECTED  REVISE AND RESUBMIT  FURNISH AS CORRECTED

**Customer:** THE SHOP DRAWINGS WHICH THIS REVIEW DOES NOT RELIEVE CONTRACTOR FROM COMPLIANCE WITH REQUIREMENTS OF THE DRAWINGS AND SPECIFICATIONS. THIS CHECK IS ONLY FOR REVIEW OF GENERAL CONFORMANCE WITH THE DESIGN CONCEPT OF THE PROJECT.

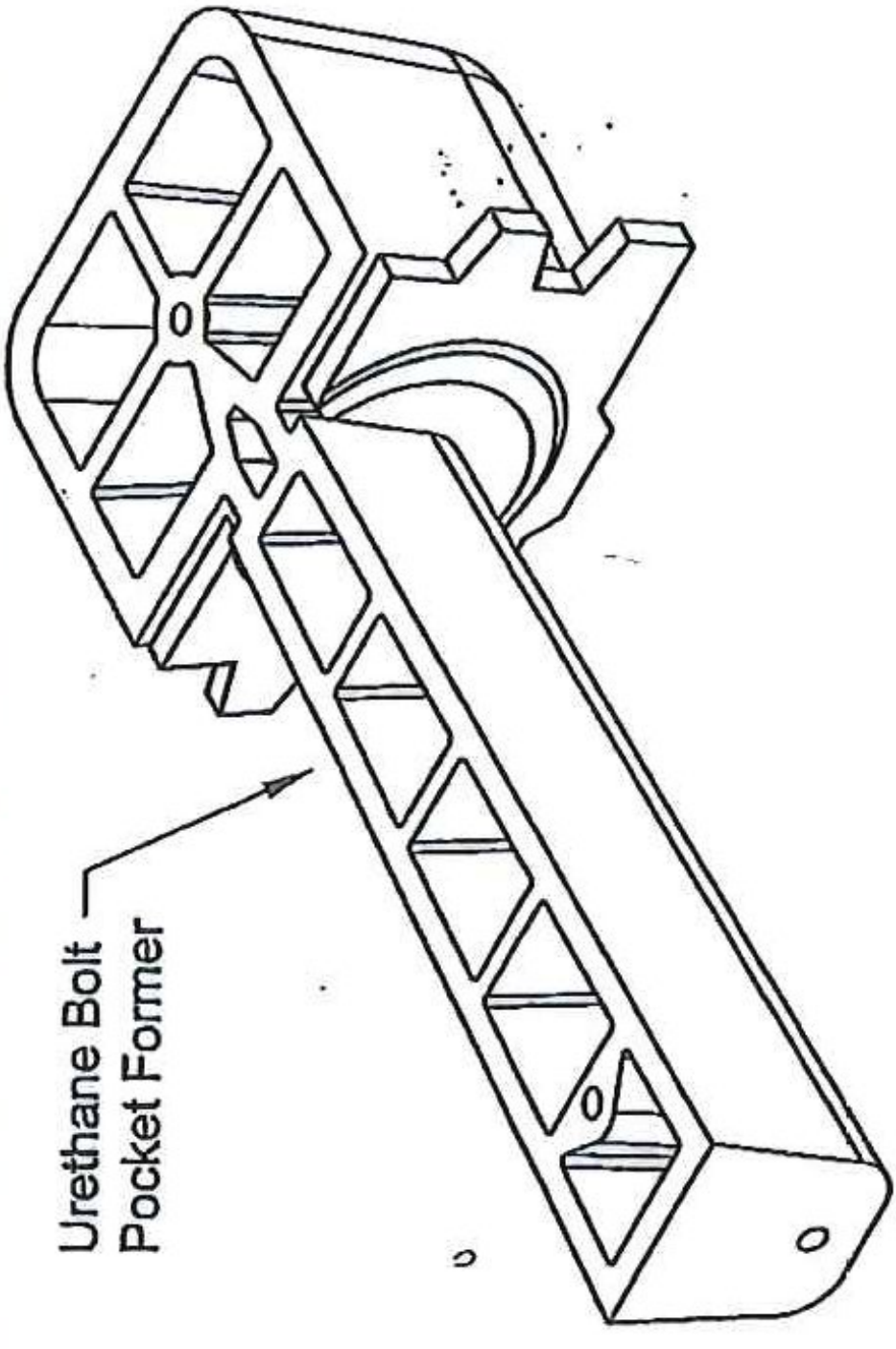
**Project:** HUBBARDTON BAL 96  
ER STP 0161 (26)

**Contractor:** THE CONTRACTOR IS RESPONSIBLE FOR: OBTAINING AND CORRELATING ALL QUANTITIES AND DIMENSIONS, SELECTING FABRICATION PROCESSES AND TECHNIQUES OF CONSTRUCTION, AND NOTIFYING THE WORK WITH LIST OF ALL OTHER TRADES AND PERFORMING HIS WORK IN ACCORDANCE WITH THE CONTRACT AND SATISFACTORY MANNERSHIP DATE.

**Customer:** Vantage Films PA Insert Quote/Order#  
7056 US Route 7  
North Ferrisburgh, VT 05473  
802.425.7788

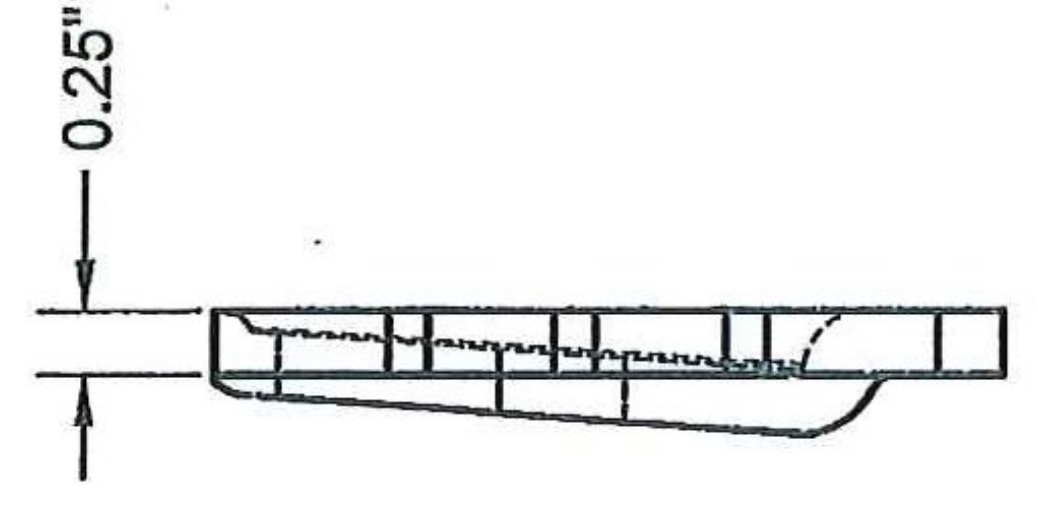
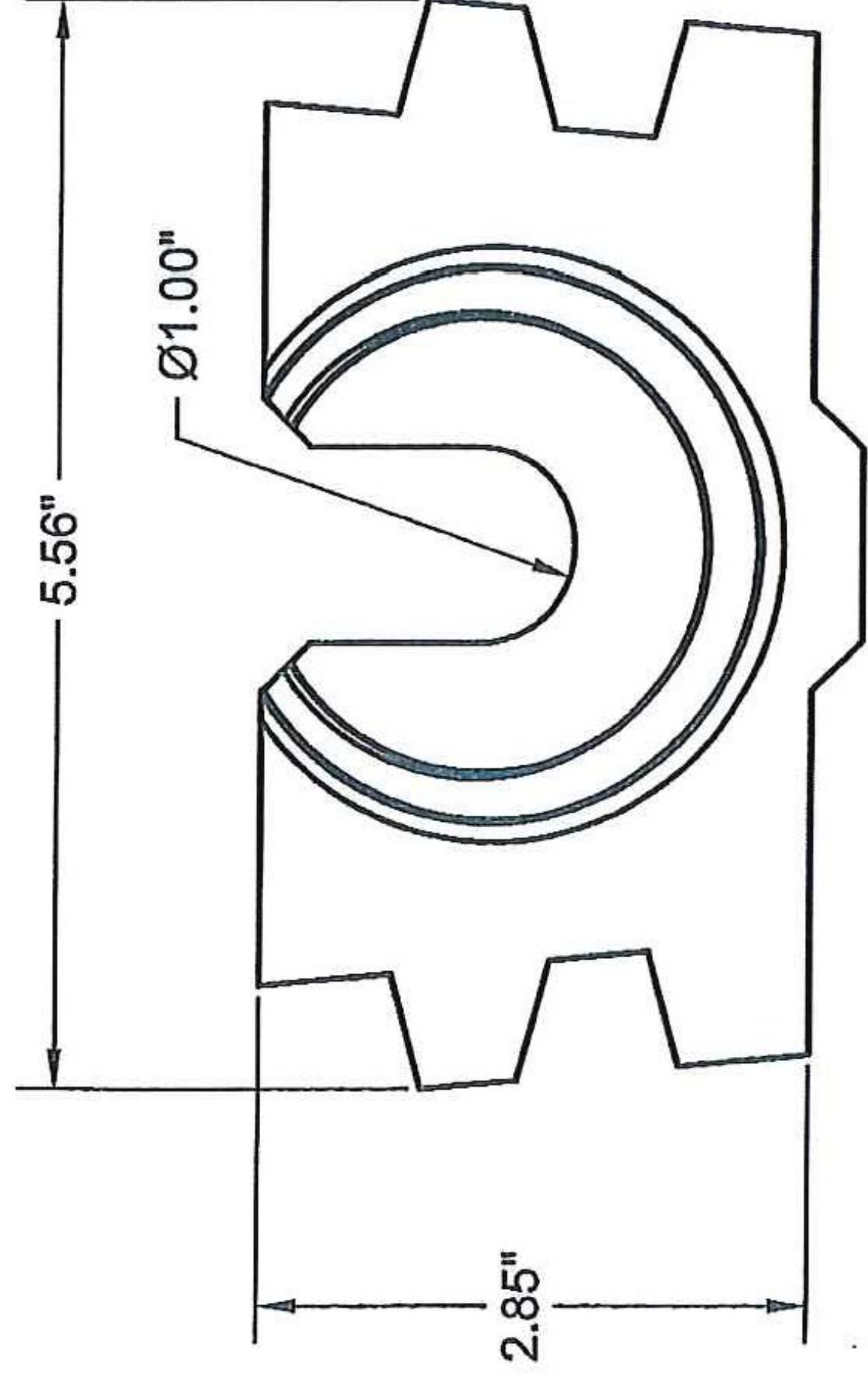
**Job#:** S.G. FARROW  
**Page:** 10-16-2012  
**Date:**

Fax to:	Customer	Approved/Notes	PA Insert Corp PO Box 199 Spring City PA 19475 tel: 610-948-9688 fax: 610-948-9750 email: sales@pennsylvaniainsert.com web: www.pennsylvaniainsert.com
Fax#	Project		
From	Job#	Ship Date	
Date	PA Insert Quote/Order#	Page	of



### BOLT POCKET PLATE (use with bolt pocket former)

- \*1/4" Galvanized Steel Plate Standard, distributes bolt load
- Teeth anchor plate securely in concrete
- Pressed center keeps bolt in position
- \*\*Fits securely into reusable bolt pocket former



2 of 2  
SGF 10-16-2012

\*Plain Steel or Stainless Steel Optional  
\*\*Urethane Bolt Pocket Former sold separately (part number 4023)