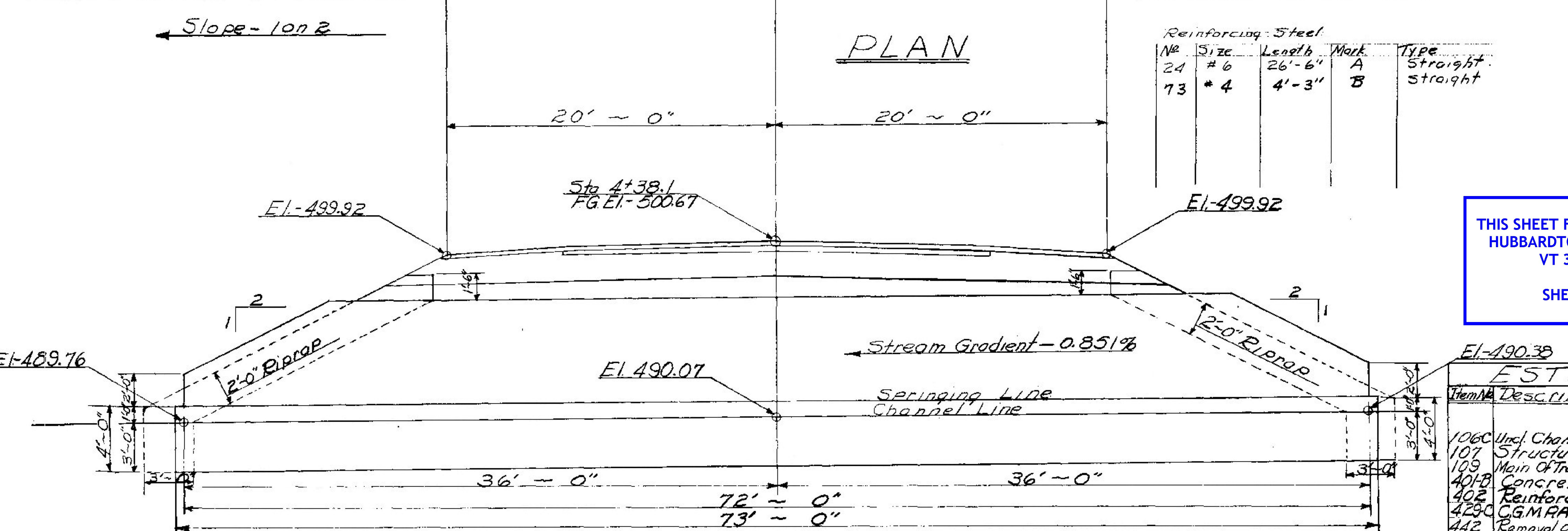


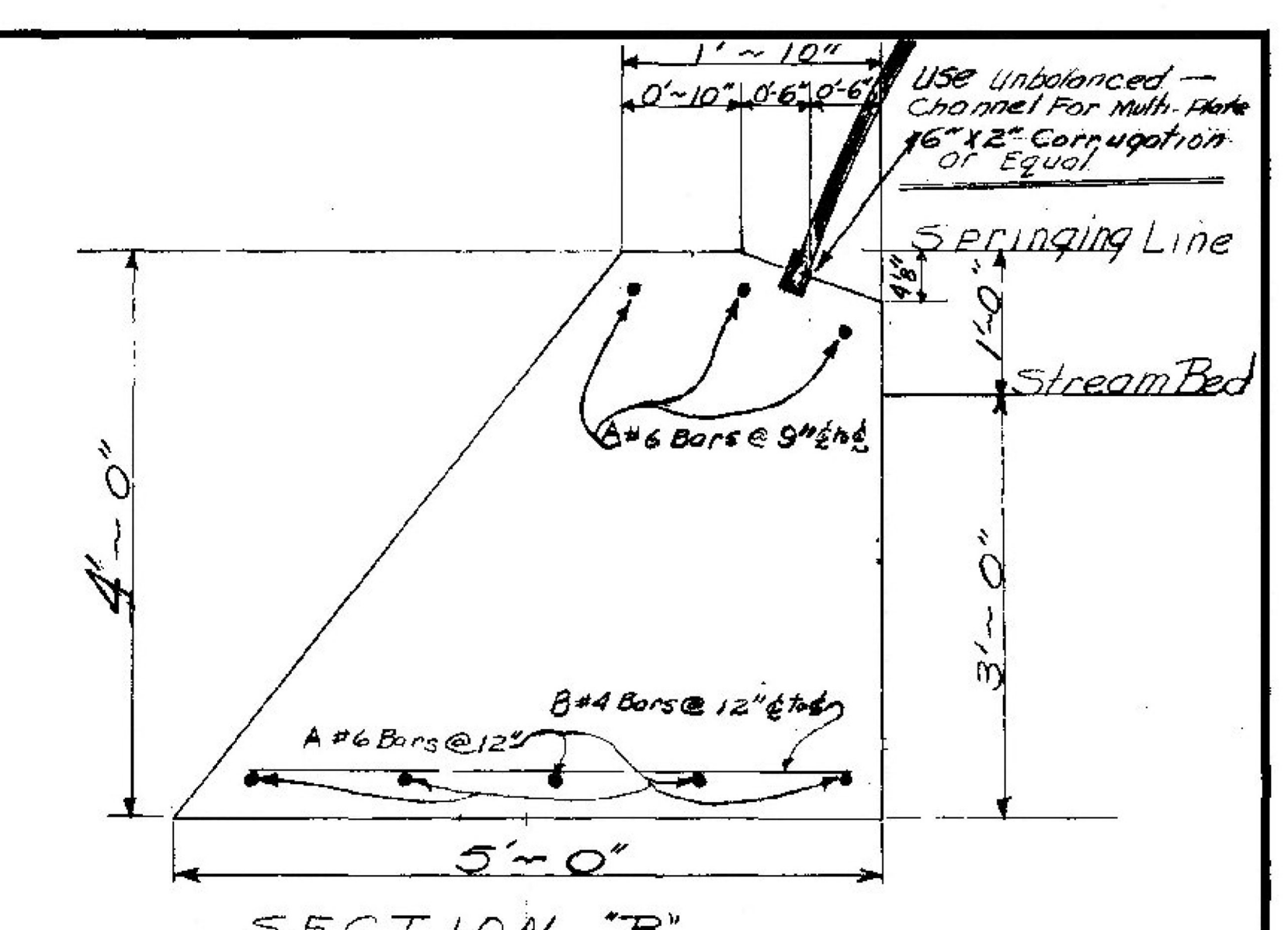
PLAN



ELEVATION ALONG C_O OF PIPE

Reinforcing Steel

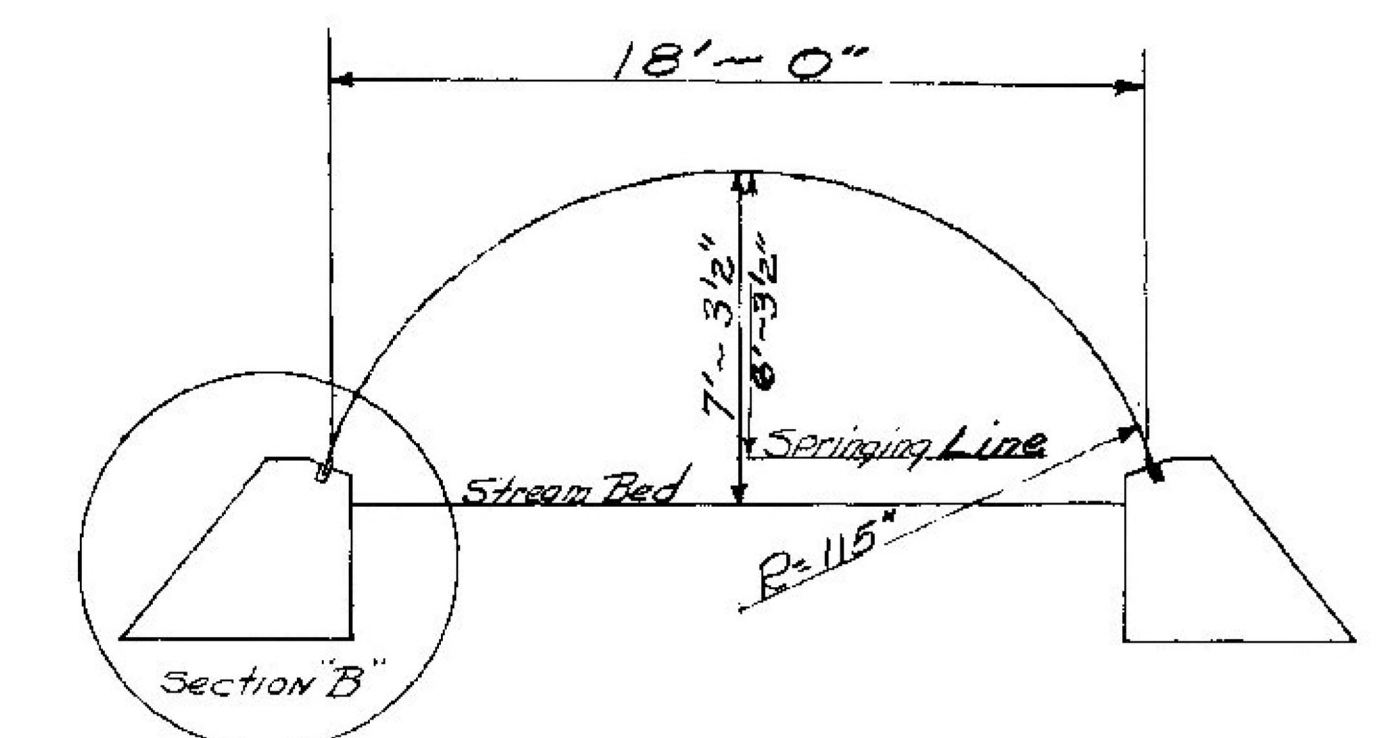
N ^o	Size	Length	Mark	Type
24	# 6	26'-6"	A	Straight
73	# 4	4'-3"	B	Straight



SECTION "B"

Scale 1" = 1'-0"

Weight per Foot - 339#
 Waterway - 83'
 Size of Arch - 18'-0" X 6'-3 1/2"
 Length - 72'-0"
 GAGE - # 3
 Weight Of Metal IN Arch - 24,408#



TYPICAL SECTION

THIS SHEET FOR REFERENCE ONLY
 HUBBARDTON ER STP 0161(26)
 VT 30 BRIDGE 96
 SHEET 39 OF 70

ESTIMATED QUANTITIES

Item No.	Description	%	Net	Over	Total	Final
106C	Uncl. Channel Excav	9	1	10		
107	Structure Excav	254	26	280		
109	Main of Traffic for Dr. Proj.	1	1			
401B	Concrete Class "B"	74	4	78		
402	Reinforcing Steel	2325	1	2325		
428C	CGMRA (24,408#)	1	1			
442	Removal of Res. Sup. Sp. 15	1	1			
526	Riprap for Bank Prot.	76	8	84		

STATE OF VERMONT
 DEPARTMENT OF HIGHWAYS

TOWN OF **HUBBARDTON**

ROAD NO. **30** BRIDGE NO. **96**
 Log Station **106+79**

CGMPA18'-0" X 6'-3 1/2" X 72' @ Sta 4+38.1

SCALE 1/4" = 1'-0"

SURVEYED BY **Eastman**

DRAWN BY **Hopkins** CHECKED BY **STONE**

PROJECT No **MA-92/25.03/1959**

SHEET **3** OF **4**