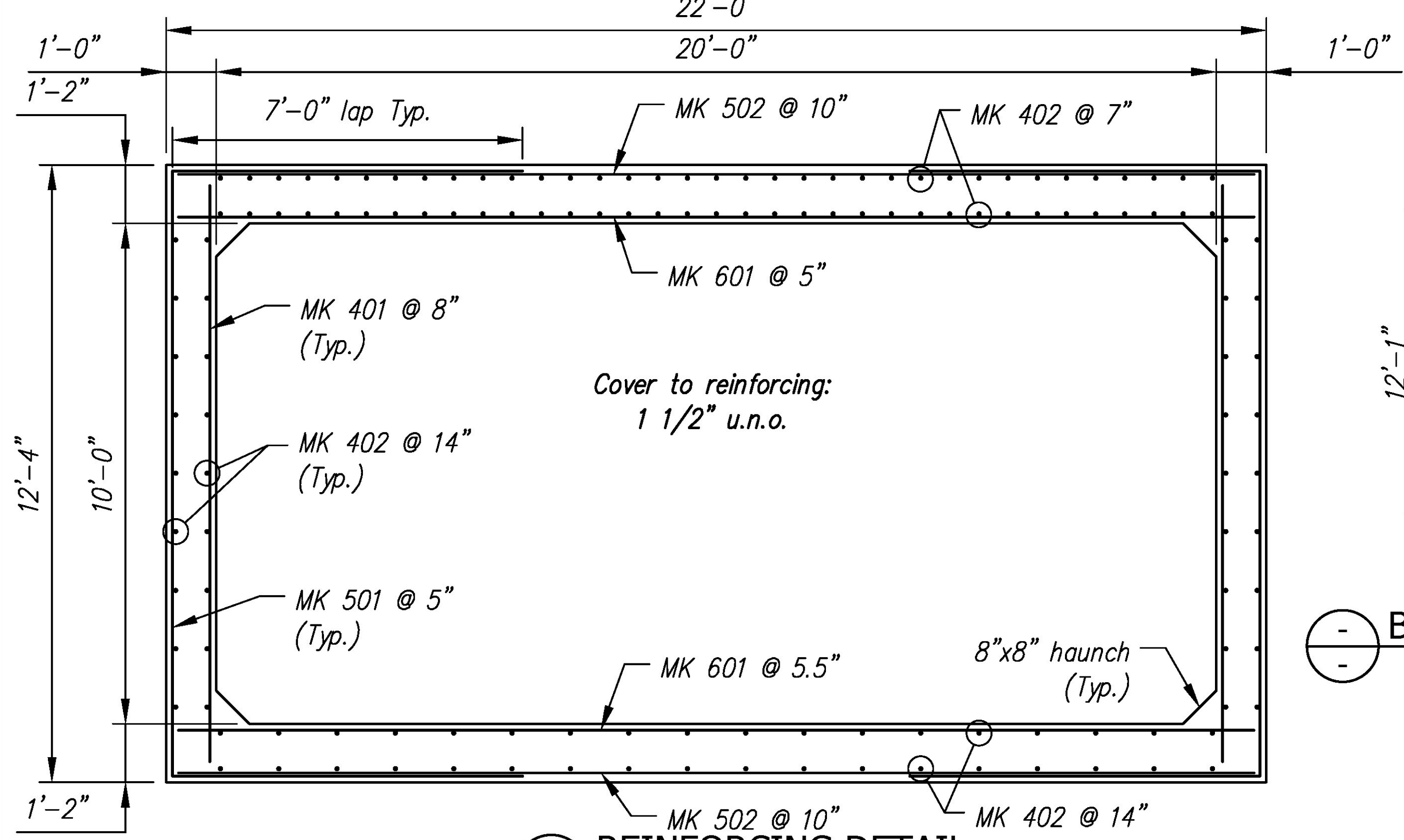


B2 Rebar Schedule			
MK	QTY	LENGTH	
401 #4	18	11' - 6"	
402 #4	142	5' - 3"	
501 #5	27	26' - 1"	
502 #5	14	21' - 6"	
601 #6	27	21' - 6"	

B2 BW Rebar Schedule			
MK	QTY	LENGTH	
403 #4	2	19' - 8"	

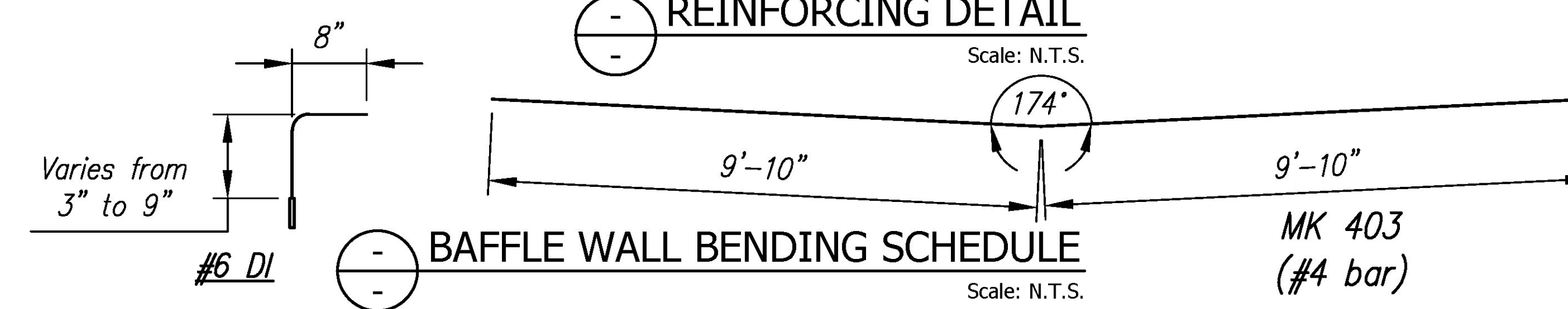
Vermont Agency of Transportation  
**RECEIVED**  
 ON: April 30, 2015  
 and Checked for  
**CONFORMANCE**  
 BY: Mark Sargent DATE: 5/7/2015



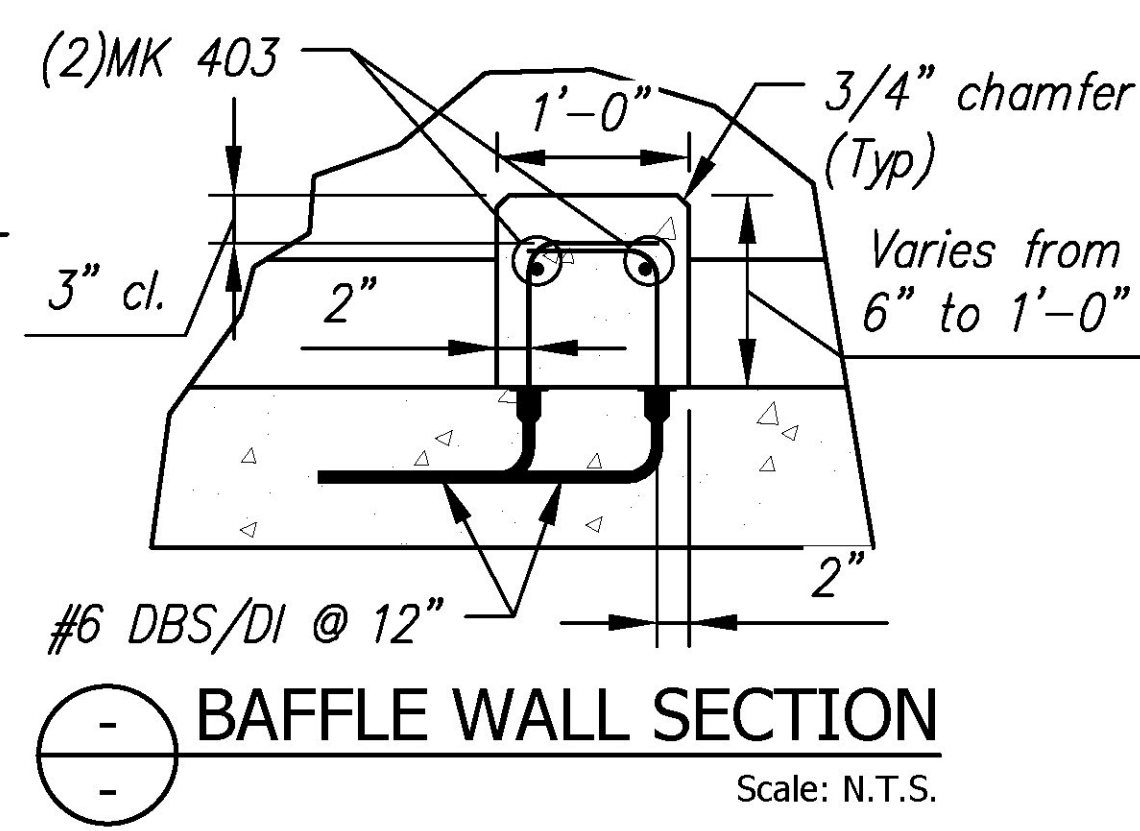
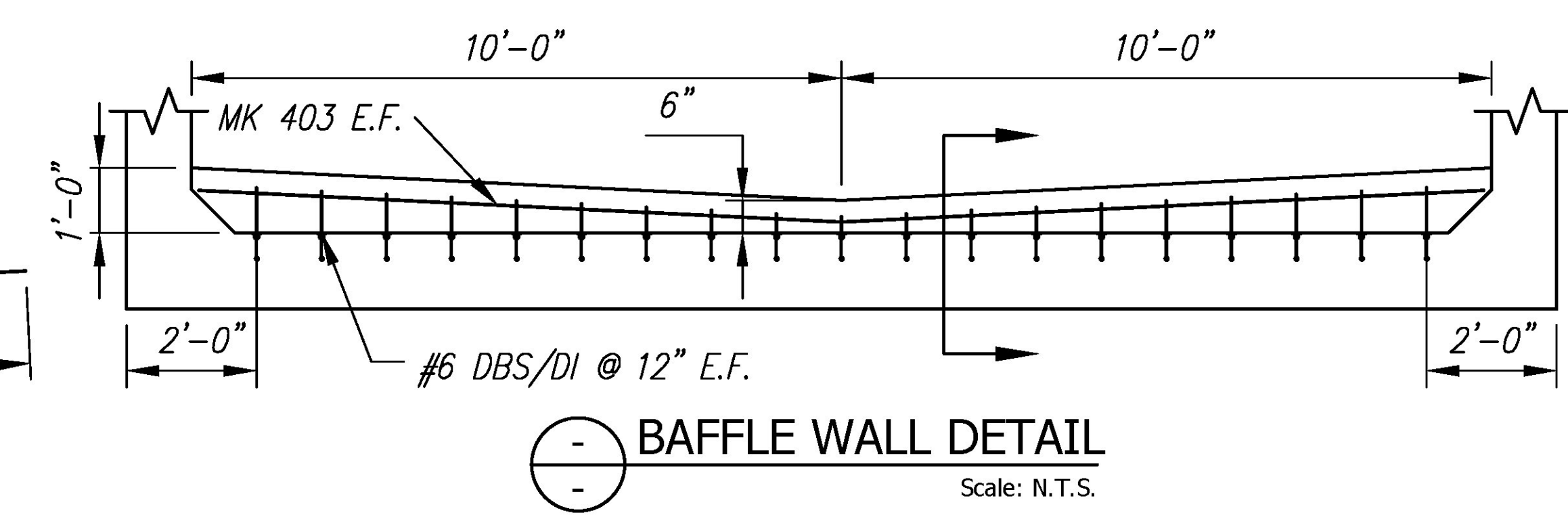
CSI I		DESCRIPTION		QTY	UM	COMMENTS
EM-00014	REVIEWED			38	EA	DOWEL BAR SPLICER
EM-00033	REVIEWED AS MODIFIED			7	FT	
EM-00125	REVISE AND RESUBMIT			8	EA	
JS-00002	NOT REVIEWED			65	FT	AROUND BELL
RM-00013				636	LB	
RM-00015				1048	LB	
RM-00017				872	LB	
MX-FA500				14.87	CY	
EM-00022				38	EA	DOWEL IN
RM-00013				26	LB	
MX-FA500				0.51	CY	



Date: 4/24/2015  
 By: Nathan Tirk  
 This review by Stantec Consulting Services Inc. is for the sole purpose of ascertaining conformance with the general design concept. This review shall not mean that Stantec Consulting Services Inc. approves the detail design inherent in the shop drawings, responsibility for which shall remain with the Contractor. Submitting same, and such review shall not relieve the Contractor of his responsibility for meeting all requirements of the Contract Documents. The contractor is responsible for dimension to be confirmed and correlated at the job site, for information that pertains solely to the fabrication processes or to techniques of construction and installation and for coordination of the work of all subtrades.



**BENDING SCHEDULE**  
Scale: N.T.S.



Rev.	Date	DESCRIPTION	By
5			
4			
3			
2			
1			
REVISIONS			

**CSI**  
 Concrete Systems Inc.  
 9 Commercial St., Hudson, NH, 03051  
 Phone 603-889-4163  
 Fax 603-889-2417

STATE AGENCY	
Drawn By R. YEAGER	Date 16MAR2015
Concrete Cu. Yd. 15.39	Weight in Tons 31.16
Approved By	Date

J A MCDONALD, INC.	
VT/AOT BRIDGE - STEEL CULVERT REPLACEMENT BRIDGE #7, VT ROUTE 58, IRASBURG, VT	
B	SHOP DRAWING - B2
Drawing No.	C22283-L02-B2
Quantity: 7	Project No: STPCULV30
SHEET 2 OF 9	

REV  
0