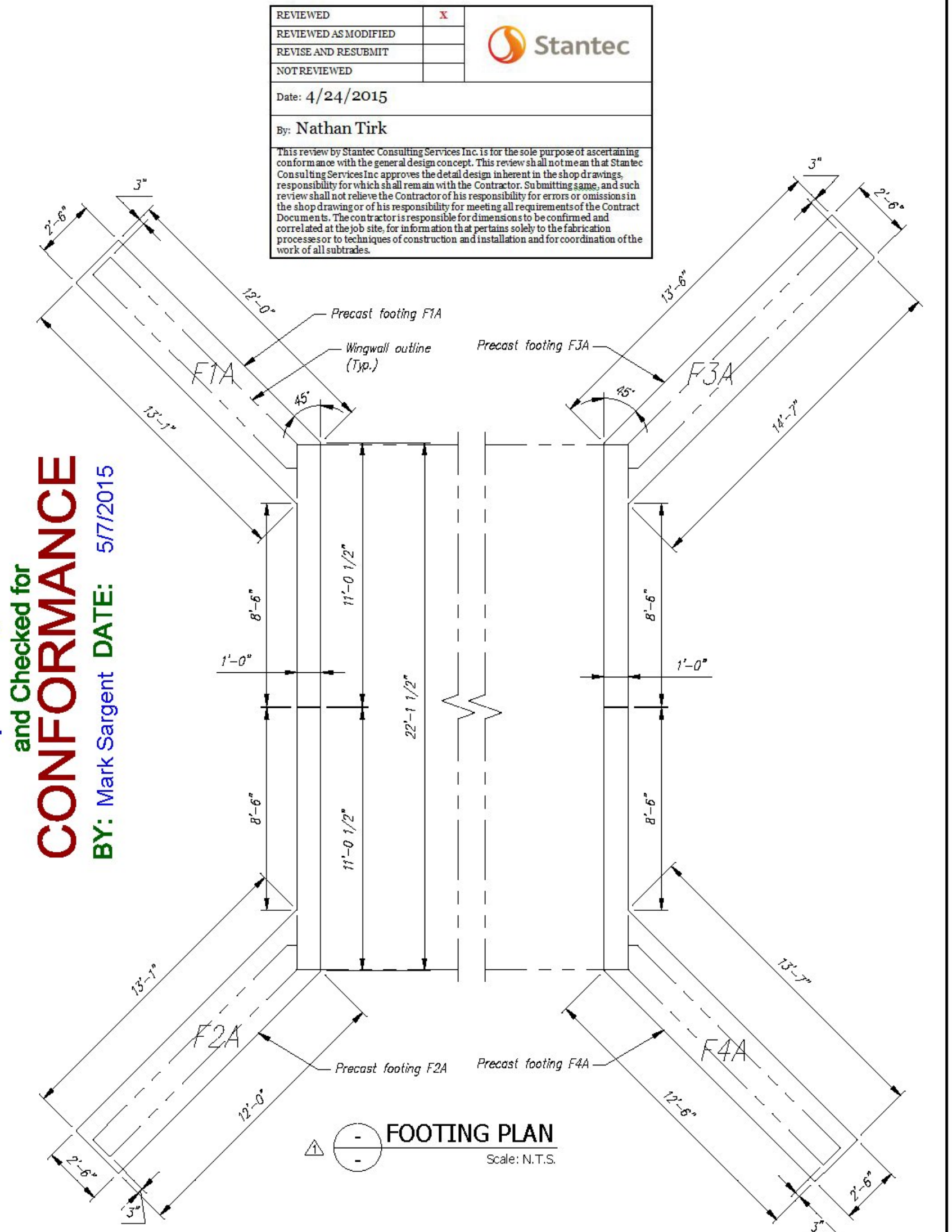
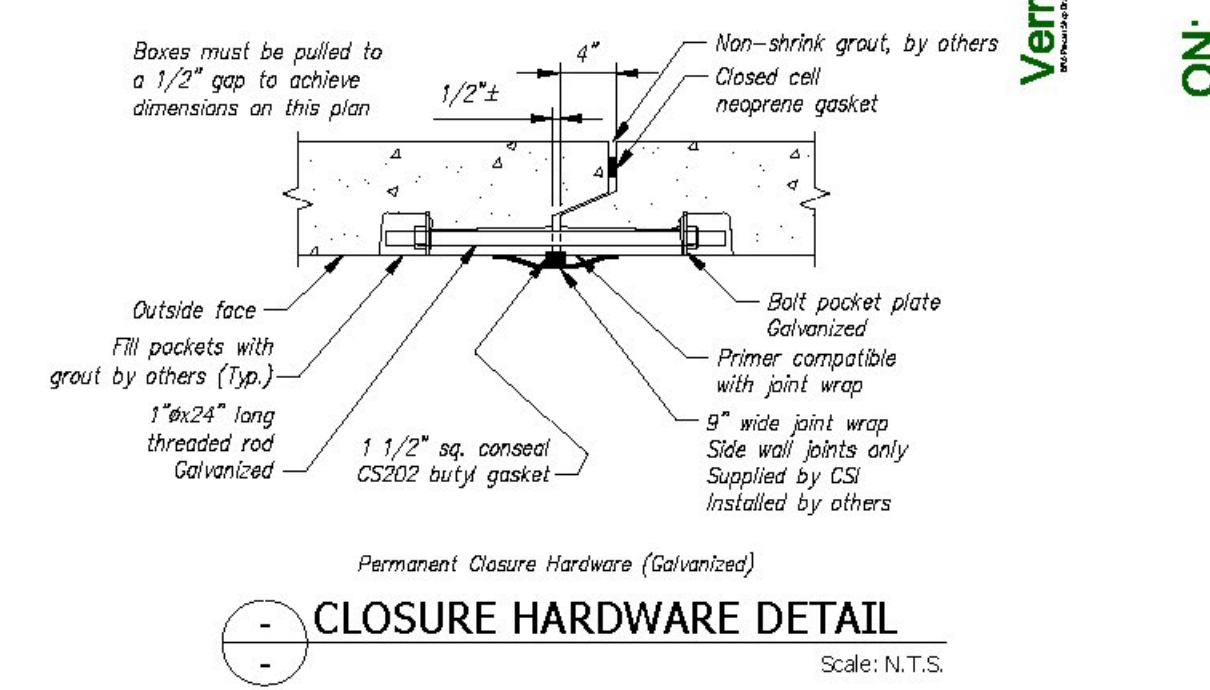
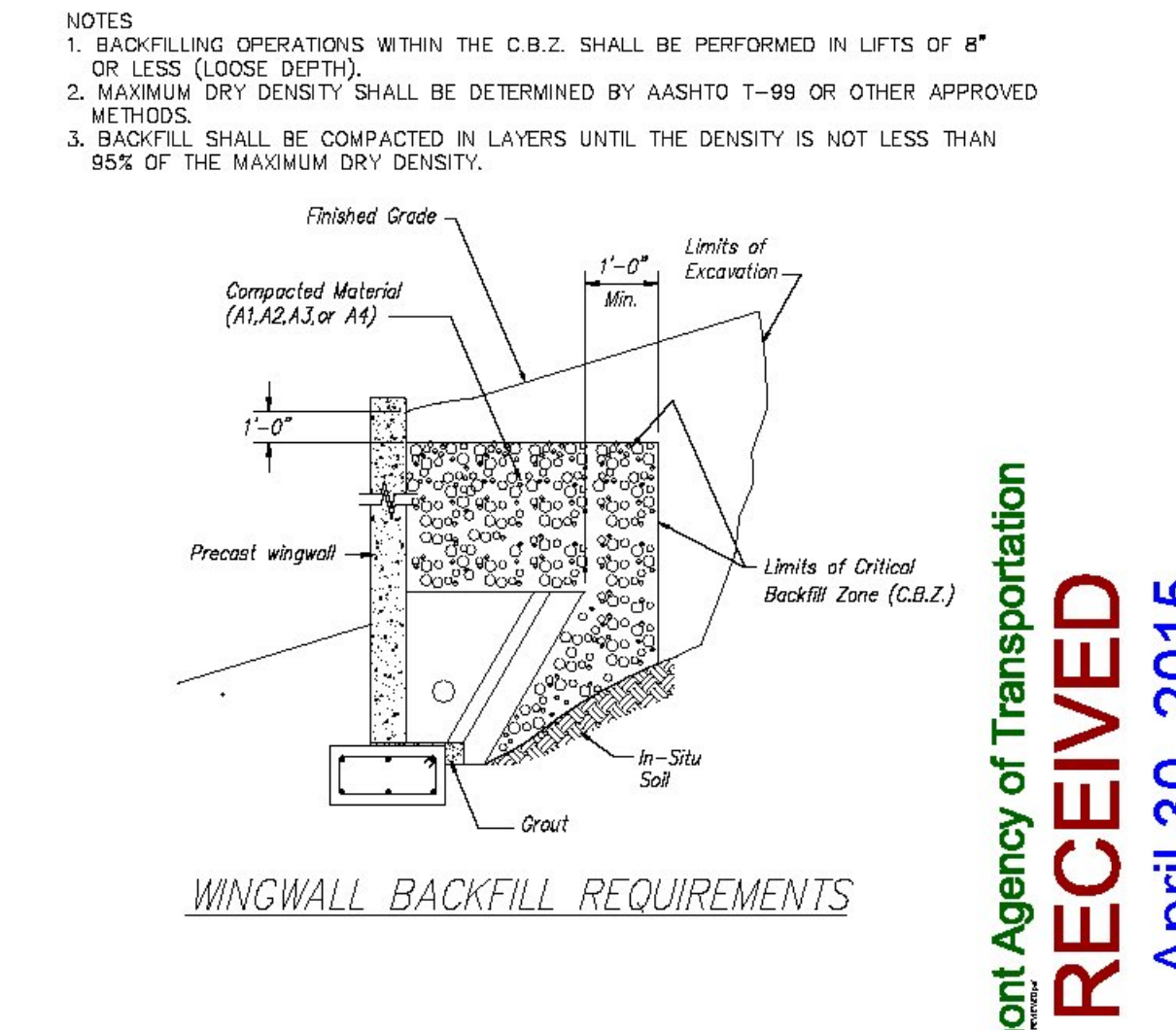


Group Classification	BACKFILL DESCRIPTION					
	A-1-a	A-1-b	A-3	A-2-4	A-2-5	A-2-6
Sieve Analysis, Percent Passing						
No. 10	50 max.					
No. 40	30 max.	50 max.	51 min.			
No. 200	15 max.	25 max.	10 max.	35 max.	35 max.	35 max.
Characteristics of Fraction Passing						
No. 40				40 max.	41 min.	40 max.
Liquid Limit				10 max.	10 max.	11 min.
Plasticity Index	6 max.		N.P.			
Usual Types of Significant Constituent Materials	Stane Fragments, Gravel & Sand		Fine Sand	Silty or Clayey Gravel and Sand		
General Rating as Subgrade			Excellent to Good			



REVIEWED		
REVIEWED AS MODIFIED		
REVISED AND RESUBMIT		
NOT REVIEWED		

Date: 4/24/2015
By: Nathan Turk

Vermont Agency of Transportation
RECEIVED
 ON: April 30, 2015
CONFORMANCE
 and Checked for
 BY: Mark Sargent DATE: 5/12/2015

Contractor to verify that all information shown on drawings has been thoroughly checked, complies with the contract documents and is adequate to meet the field conditions. Some dimensions and details may differ slightly from contract drawings to accommodate the manufacturing or design process. Approval of this drawing indicates that any deviation from the contract documents has been reviewed and found to be acceptable. Production will not commence until receipt of signed, approved shop drawings.

This drawing contains information proprietary to CONCRETE SYSTEMS, INC. This drawing is disclosed with the understanding that it will be retained in confidence and its use limited solely to the purpose for which it is disclosed. It is understood that no reproduction of this drawing is authorized without permission from CONCRETE SYSTEMS, INC. and that it will be returned to CONCRETE SYSTEMS, INC. upon request.

Stamp for structural design only

Rev.	Date	DESCRIPTION	By
5			
4			
3			
2			
1	01APR2015	CONSPAN WW ANCHORS WERE TYPE "D", Wws WERE 10" THK, WW & FTG WEIGHTS UPDATED	RY

This drawing is based upon information provided from the following documents and/or sources:

Engineer: STATE OF VT AOT PROGRAM DEVELOPMENT
 Project No: STPCULV30
 Drawings: VT/AOT PROPOSED IMPROVEMENT BRIDGE PROJECT SHEETS 1 THRU 24 & 32 OF 55
 Specifications: -----
 Other Sources: -----

CSI
 Concrete Systems Inc.
 9 Commercial St., Hudson, NH 03051
 Phone 603-889-4168
 Fax 603-889-2417

STATE AGENCY
VTrans
 Vermont Agency of Transportation

J A MCDONALD, INC.
 VT/AOT BRIDGE - STEEL CULVERT REPLACEMENT
 BRIDGE #6, VT ROUTE 58, IRASBURG, VT

20' SPAN X 8' RISE BOX CULVERT LAYOUT
 C22283-LO1B

Project No: STPCULV30
 SHEET 2A OF 2A