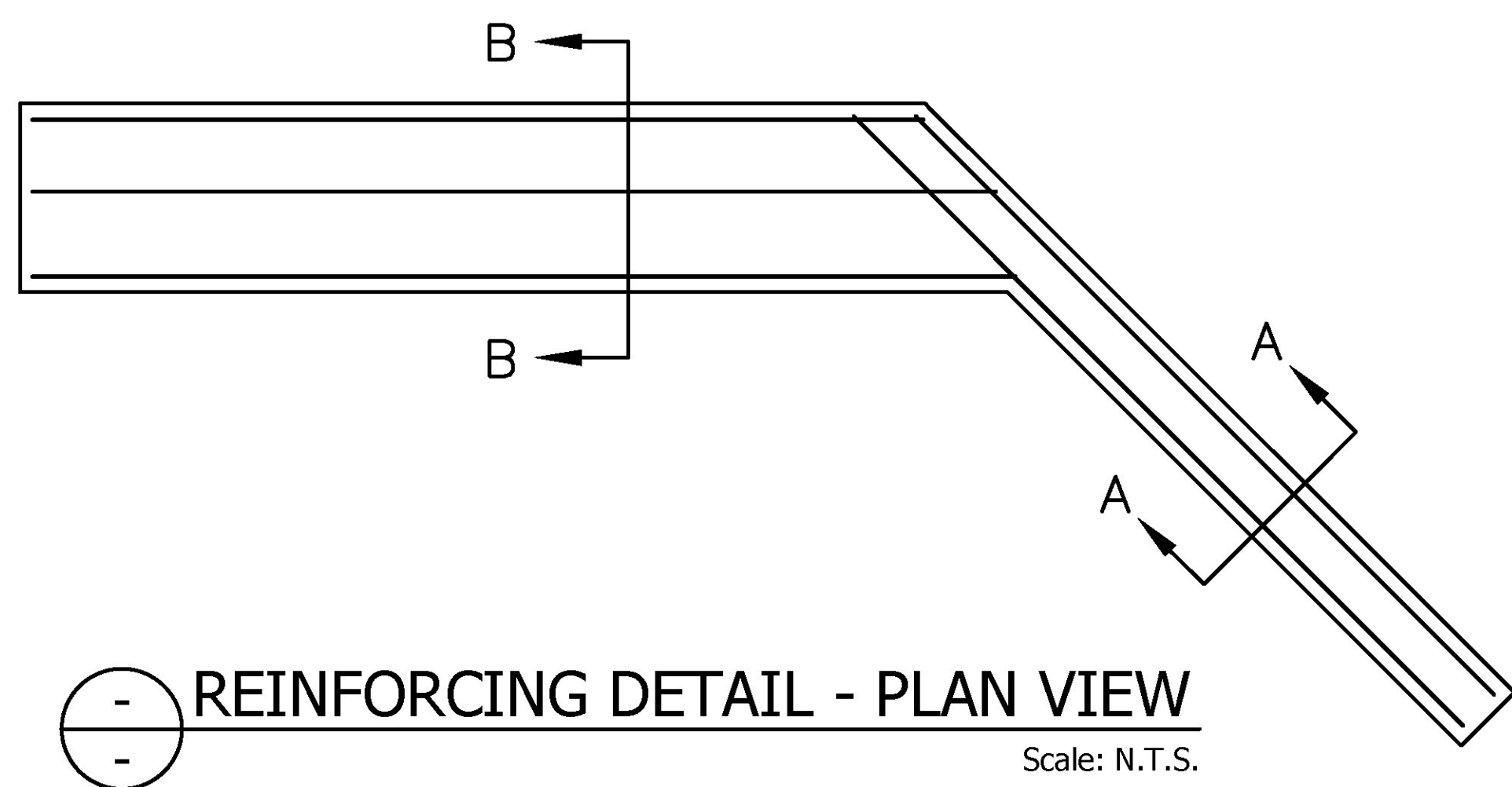
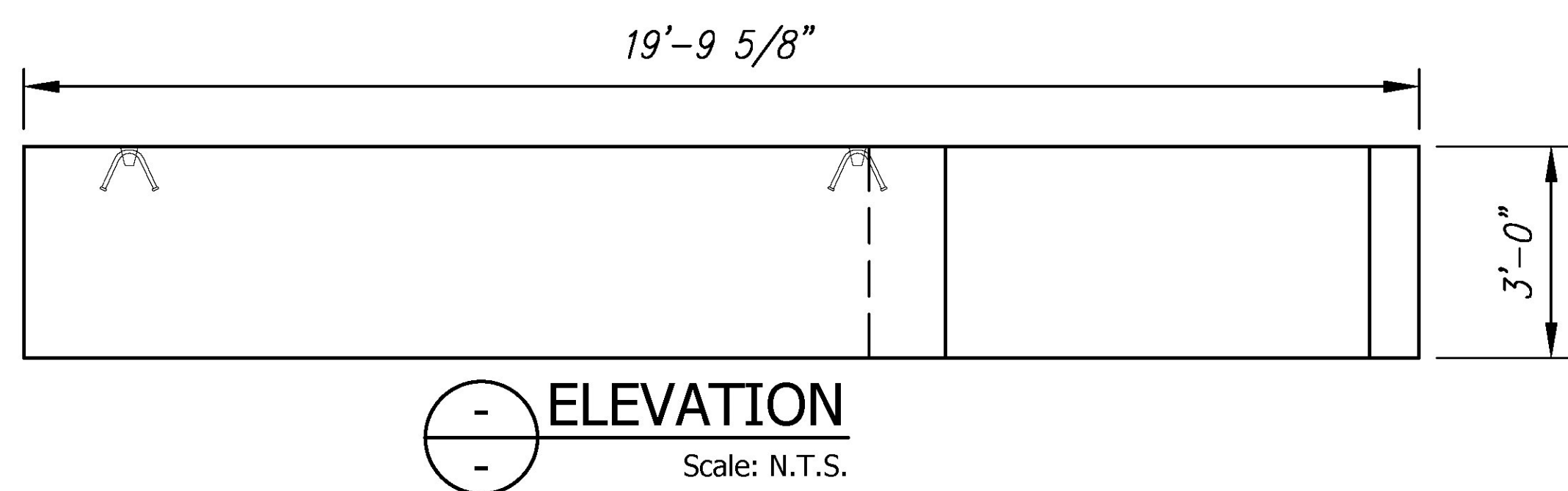
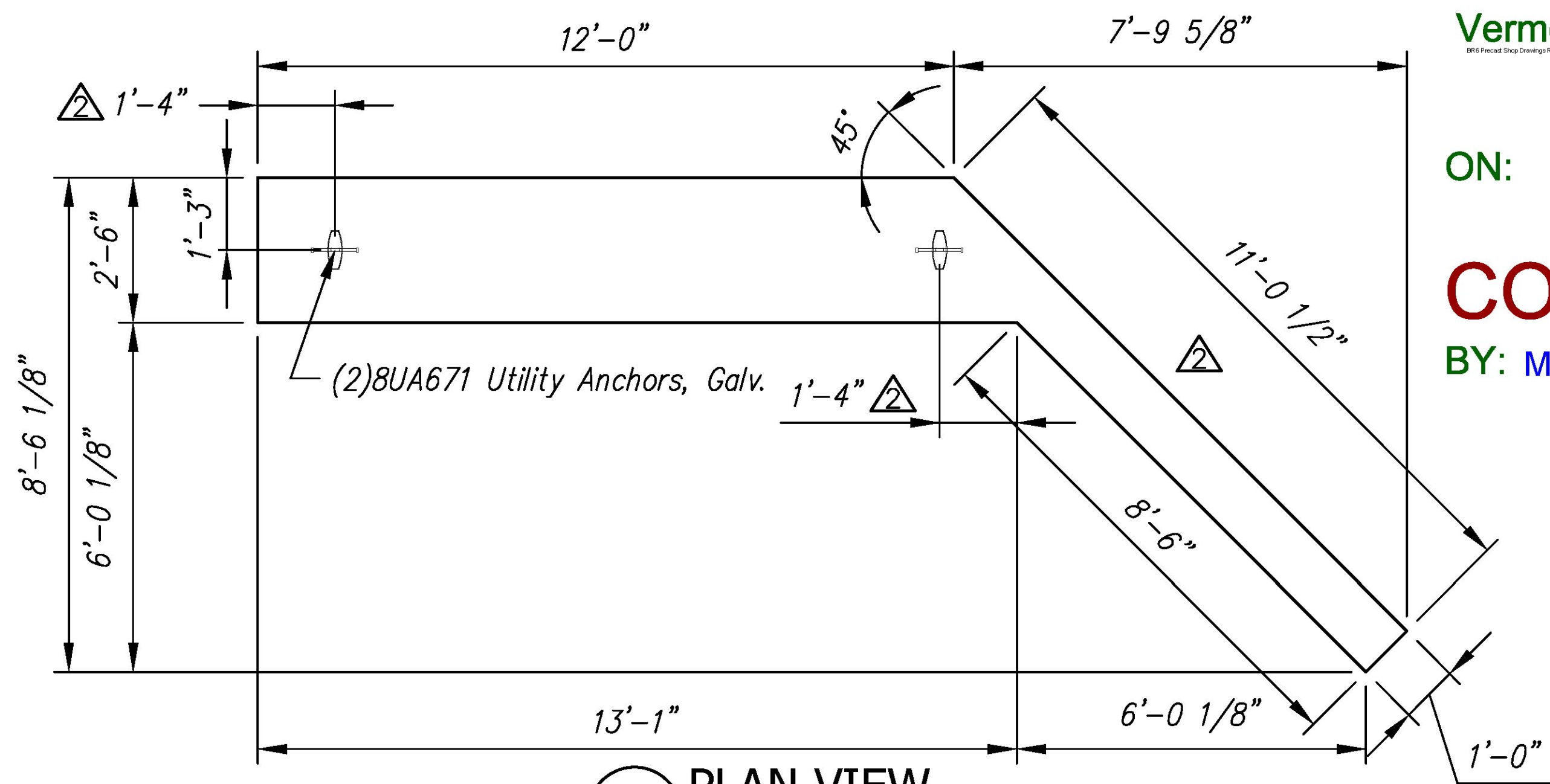


Vermont Agency of Transportation

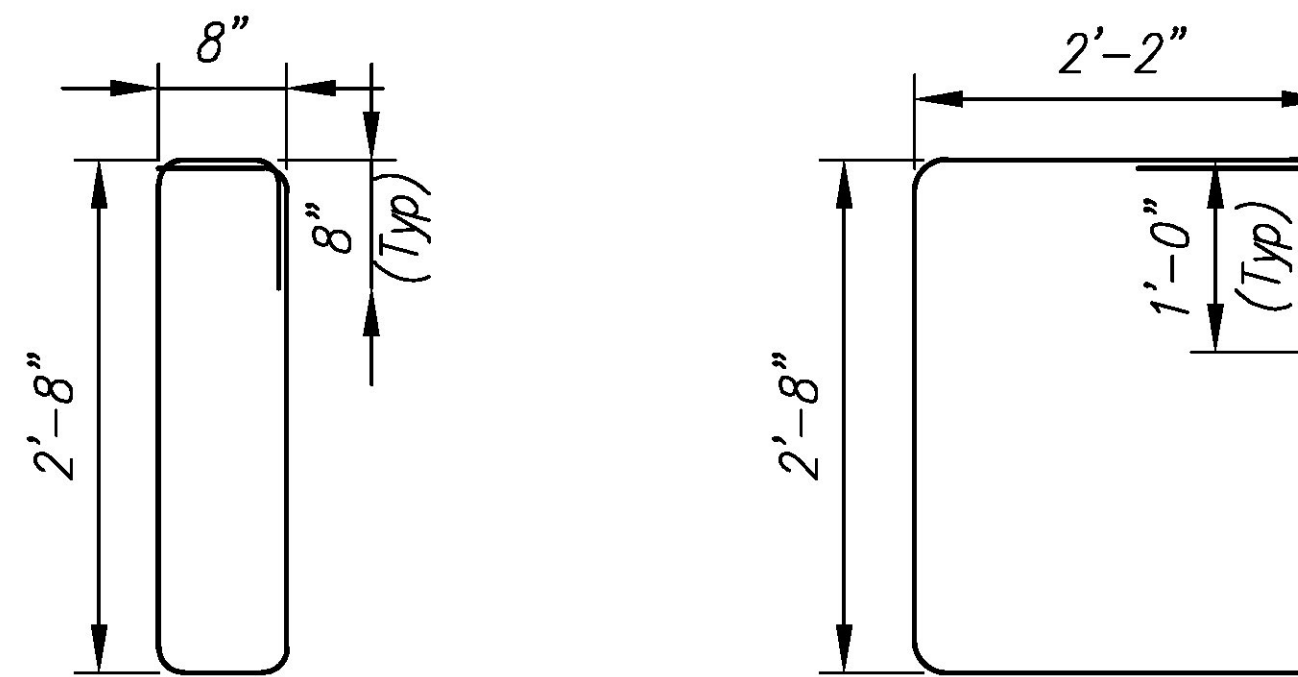
**RECEIVED**  
**ON: April 30, 2015**  
**and Checked for CONFORMANCE**

BY: Mark Sargent DATE: 5/7/2015

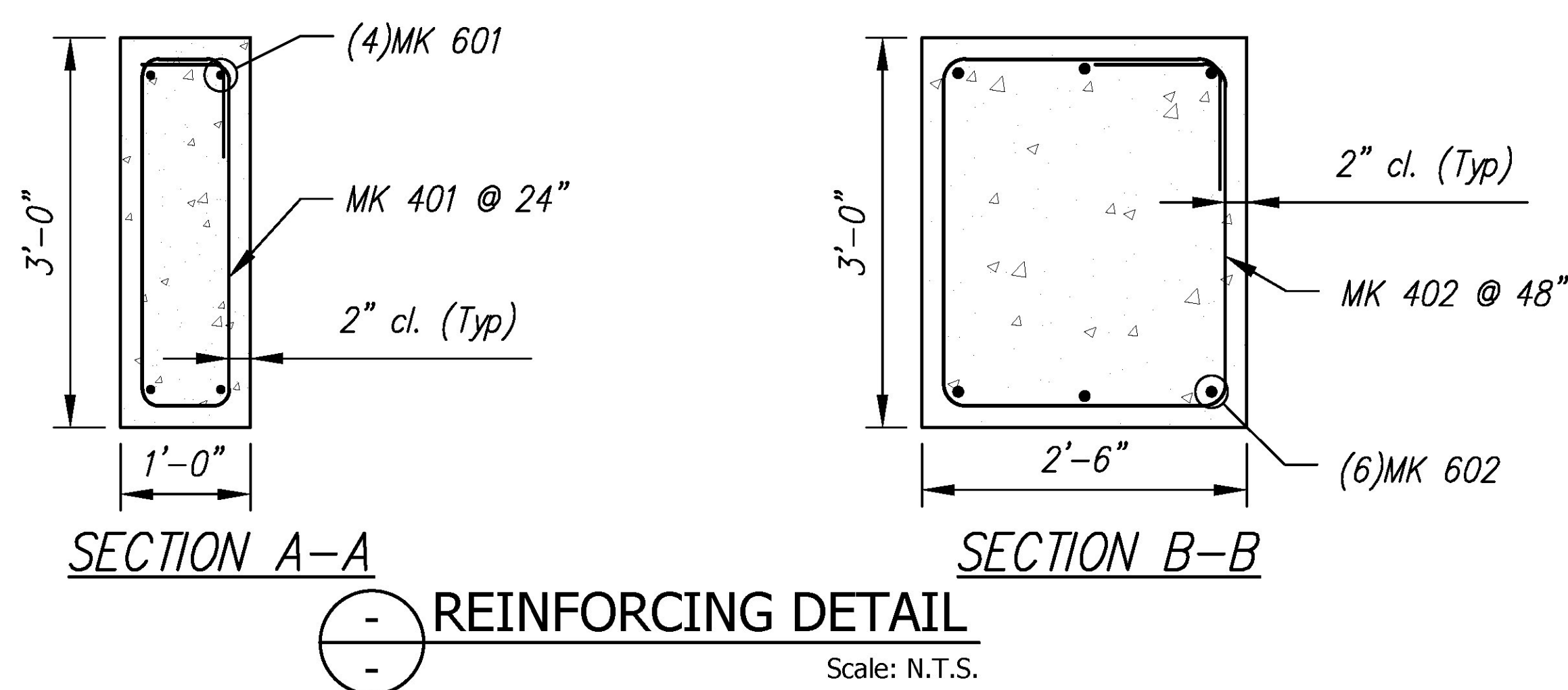


| F1A FOOTING - BILL OF MATERIALS / EMBEDS |  |      |    |          |
|--|--|------|----|----------|
| CSI ID#                                  | DESCRIPTION                                  | QTY  | UM | COMMENTS |
| EM-00115                                 | UTILITY ANCHOR #8UA671-GALVANIZED            | 2    | EA |          |
| RM-00013                                 | REBAR #4 BLACK- GR 60                        | 63   | LB |          |
| RM-00017                                 | REBAR #6 BLACK-GR 60 40'                     | 186  | LB |          |
| MX-FA5000SC30                            | MIX DESIGN - FLY ASH 5000 SELF CONSOLIDATING | 4.57 | CY |          |

| F1A Rebar Schedule |    |     |              |
|--------------------|----|-----|--------------|
| MK                 | #  | QTY | LENGTH       |
| 401                | #4 | 6   | 8' - 0"      |
| 402                | #4 | 4   | 11' - 8"     |
| 601                | #6 | 4   | 11' - 6"     |
| 602                | #6 | 6   | 13' - 0" MAX |



|   |   |  |
|---|---|--|
| REVIEWED  | X |  |
| REVIEWED AS MODIFIED  |   |  |
| REVISE AND RESUBMIT   |   |  |
| NOT REVIEWED  |   |  |
| Date: 4/24/2015   |   |  |
| By: Nathan Tirk   |   |  |
| This review by Stantec Consulting Services Inc. is for the sole purpose of ascertaining conformance with the general design concept. This review shall not mean that Stantec Consulting Services Inc. approves the detail design inherent in the shop drawings, responsibility for which shall remain with the Contractor. Submitting same, and such review shall not relieve the Contractor of his responsibility for errors or omissions in the shop drawing or of his responsibility for meeting all requirements of the Contract Documents. The contractor is responsible for dimensions to be confirmed and correlated at the job site, for information that pertains solely to the fabrication processes or to techniques of construction and installation and for coordination of the work of all subtrades. |   |  |



| Rev.      | Date      | DESCRIPTION                           | By |
|-----------|-----------|---------------------------------------|----|
| 5         |           |                                       |    |
| 4         |           |                                       |    |
| 3         |           |                                       |    |
| 2         | 28APR2015 | REVISED UTILITY ANCHOR LOCATIONS      | RY |
| 1         | 01APR2015 | DIMENSIONAL CHANGES DUE TO 12" THK WW | RY |
| Rev.      | Date      | DESCRIPTION                           | By |
| REVISIONS |           |                                       |    |

**Concrete Systems Inc.**  
 9 Commercial St., Hudson, NH, 03051  
 Phone 603-889-4163  
 Fax 603-889-2417

| STATE AGENCY             |                        |
|--------------------------|------------------------|
|                          |                        |
| Drawn By<br>R. YEAGER    | Date<br>12MAR2015      |
| Concrete Cu. Yd.<br>4.57 | Weight in Tons<br>9.25 |
| Approved By              | Date                   |

|   |                            |
|---|----------------------------|
| J A MCDONALD, INC.<br>VT/AOT BRIDGE - STEEL CULVERT REPLACEMENT<br>BRIDGE #6, VT ROUTE 58, IRASBURG, VT |                            |
| B   | SHOP DRAWING - F1A         |
|   | Drawing No. C22283-L01-F1A |
| Quantity: 1   | Project No: STPCULV30      |
| SHEET 10 OF 13  |                            |

REV 2