

621.20 - STEEL BEAM GUARDRAIL, GALVANIZED
 STA. 33+11.03, LT. TO STA. 34+50.00, LT.
 STA. 34+41.44, RT. TO STA. 34+50.00, RT.
 STA. 35+50.00, LT. TO STA. 36+49.20, LT.
 STA. 35+50.00, RT. TO STA. 36+61.45, RT.

646.400- DURABLE 4 INCH WHITE LINE
 STA. 33+55.00, RT. TO STA. 36+47.00, RT.
 STA. 33+55.00, LT. TO STA. 36+47.00, LT.

646.410- DURABLE 4 INCH YELLOW LINE
 STA. 33+55.00, CL. TO STA. 36+47.00, CL. (DYEL)

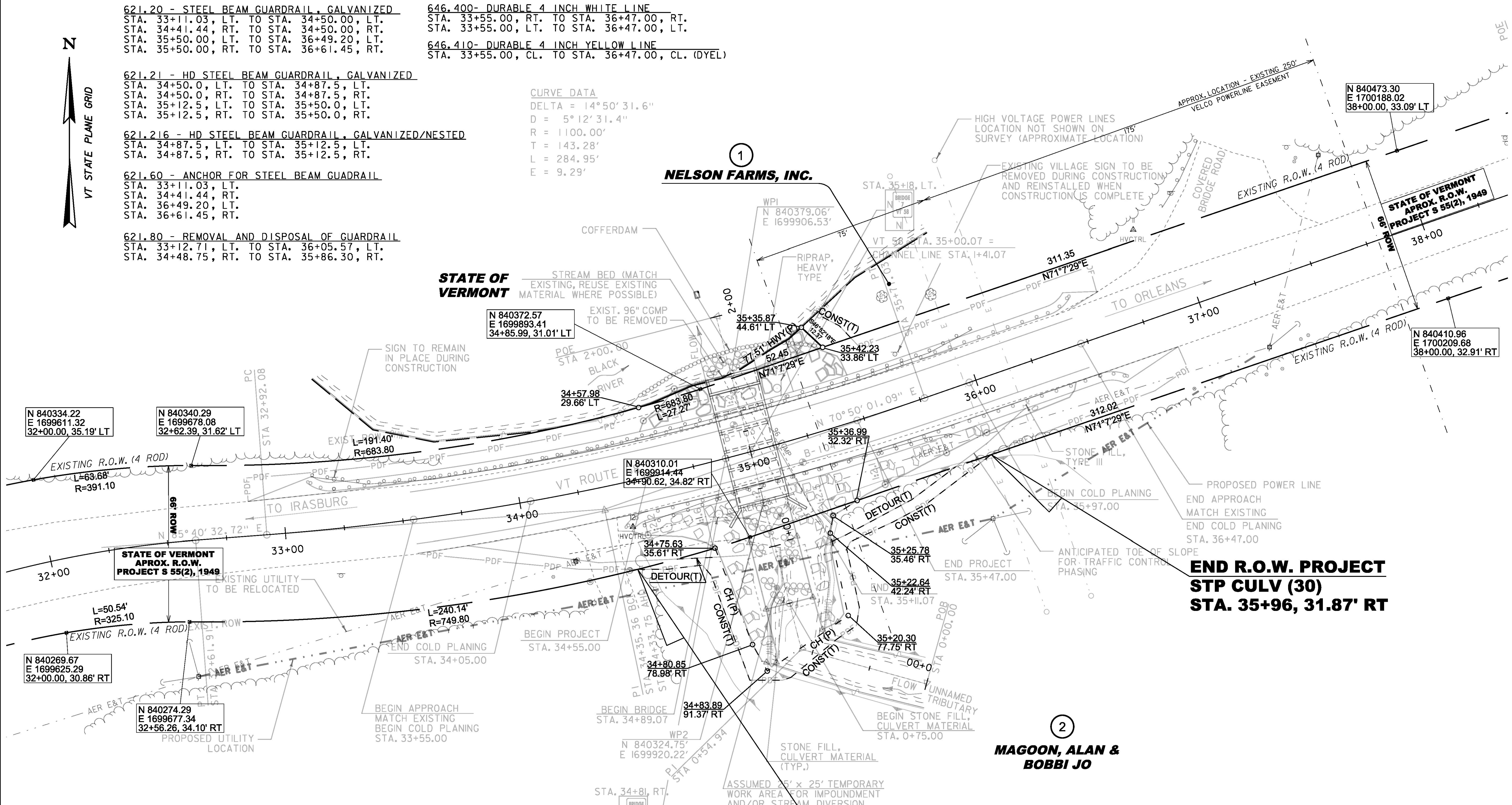
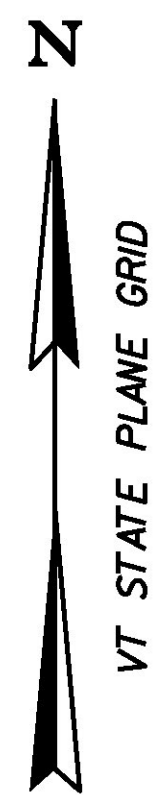
621.21 - HD STEEL BEAM GUARDRAIL, GALVANIZED
 STA. 34+50.0, LT. TO STA. 34+87.5, LT.
 STA. 34+50.0, RT. TO STA. 34+87.5, RT.
 STA. 35+12.5, LT. TO STA. 35+50.0, LT.
 STA. 35+12.5, RT. TO STA. 35+50.0, RT.

CURVE DATA
 DELTA = 14° 50' 31.6"
 D = 5° 12' 31.4"
 R = 1100.00'
 T = 143.28'
 L = 284.95'
 E = 9.29'

621.216 - HD STEEL BEAM GUARDRAIL, GALVANIZED/NESTED
 STA. 34+87.5, LT. TO STA. 35+12.5, LT.
 STA. 34+87.5, RT. TO STA. 35+12.5, RT.

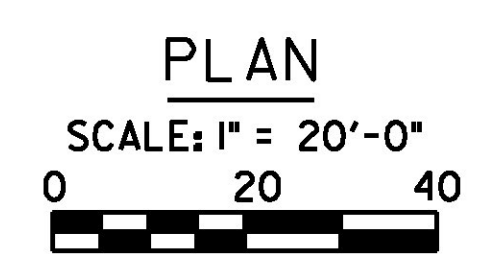
621.60 - ANCHOR FOR STEEL BEAM GUARDRAIL
 STA. 33+11.03, LT.
 STA. 34+41.44, RT.
 STA. 36+49.20, LT.
 STA. 36+61.45, RT.

621.80 - REMOVAL AND DISPOSAL OF GUARDRAIL
 STA. 33+12.71, LT. TO STA. 36+05.57, LT.
 STA. 34+48.75, RT. TO STA. 35+86.30, RT.



NOTES:
 1. GRADE IN ACCORDANCE WITH TYPICAL ROADWAY SECTION AND ROADWAY CROSS SECTIONS UNLESS NOTED OTHERWISE.

LEGEND	
	RIPRAP, HEAVY TYPE
	STONE FILL, TYPE III
	STONE FILL, CULVERT LINING



**BEGIN R.O.W. PROJECT
 STP CULV (30)
 STA. 34+43, 36.95' RT**

**END R.O.W. PROJECT
 STP CULV (30)
 STA. 35+96, 31.87' RT**

**MAGOON, ALAN &
 BOBBI JO**

LINES SHOWN ON THIS PLAN AS EXISTING PROPERTY LINES P/L ARE BELIEVED TO BE ACCURATE BUT SHOULD NOT BE RELIED UPON FOR PURPOSES UNRELATED TO THE STATE OF VERMONT'S ACQUISITION OF LAND AND RIGHTS FOR THIS PROJECT.

PROJECT NAME: IRASBURG	PLOT DATE: 04-AUG-2014
PROJECT NUMBER: STP CULV(30)	DRAWN BY: E. PIERCE
FILE NAME: r1lc266lay_br7.dgn	CHECKED BY: R. CLOUTIER
PROJECT LEADER: M. SARGENT	SHEET 55 OF 55
DESIGNED BY: STANTEC	
R.O.W. LAYOUT - BR7	

FOR R.O.W. USE ONLY