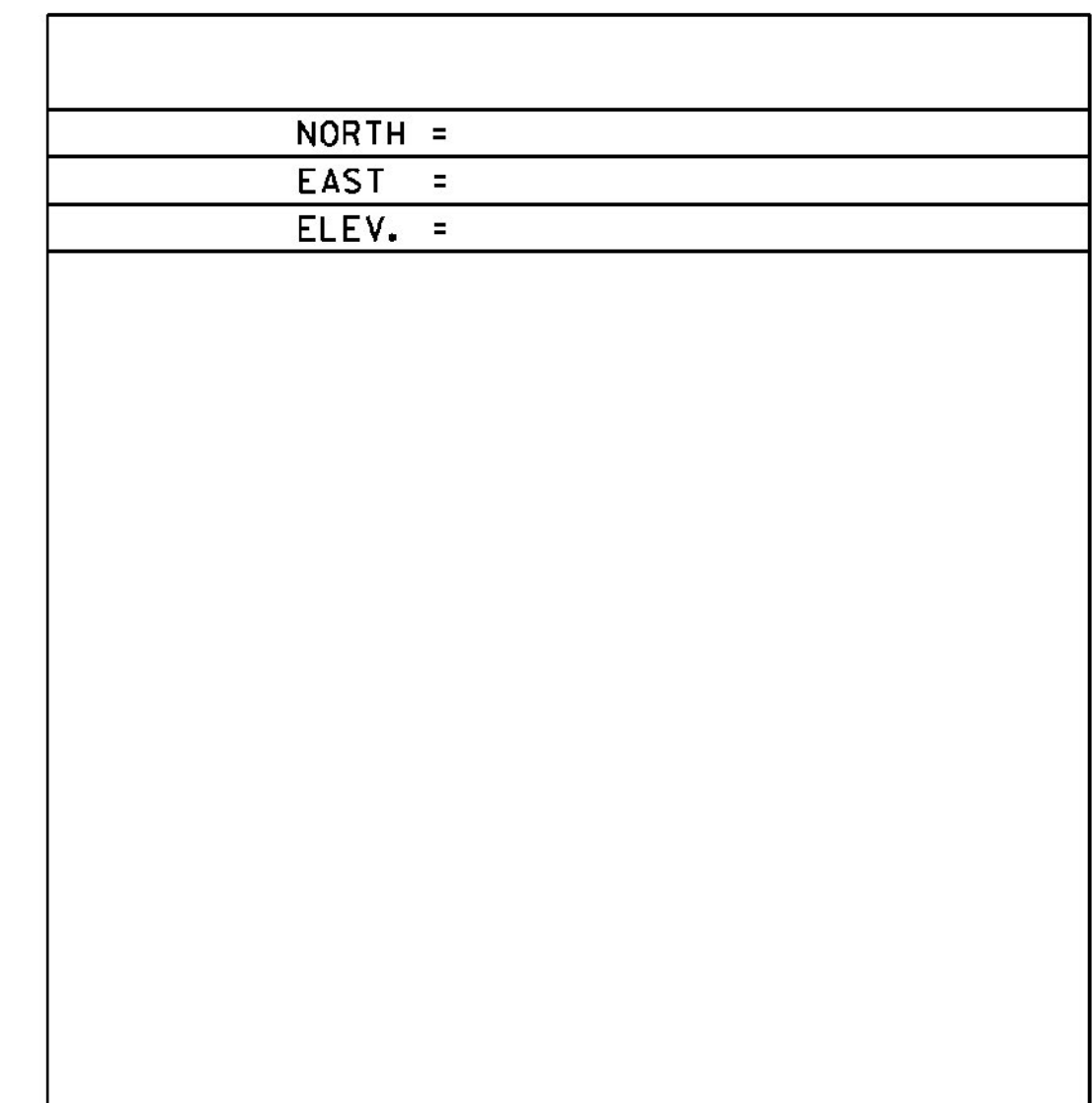
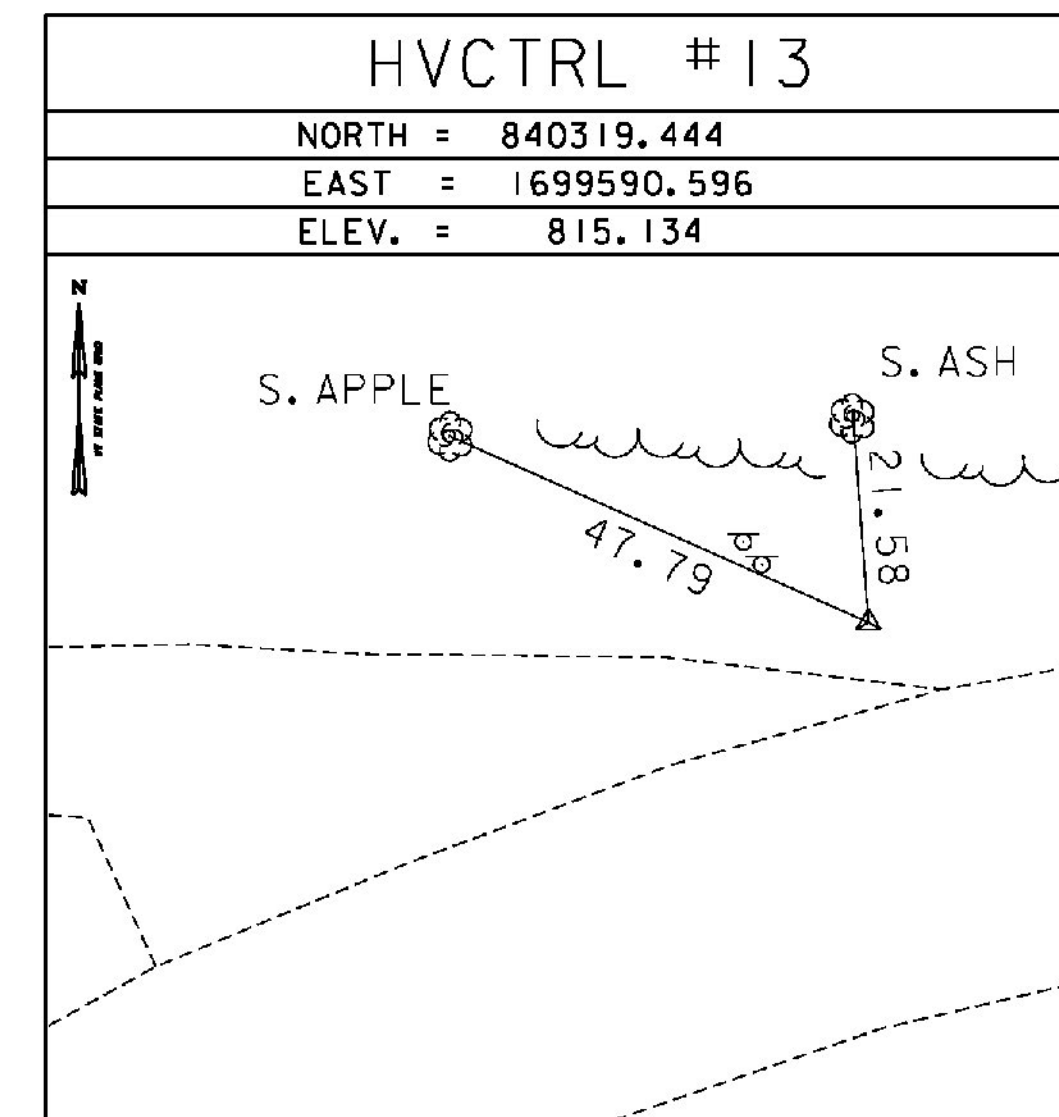
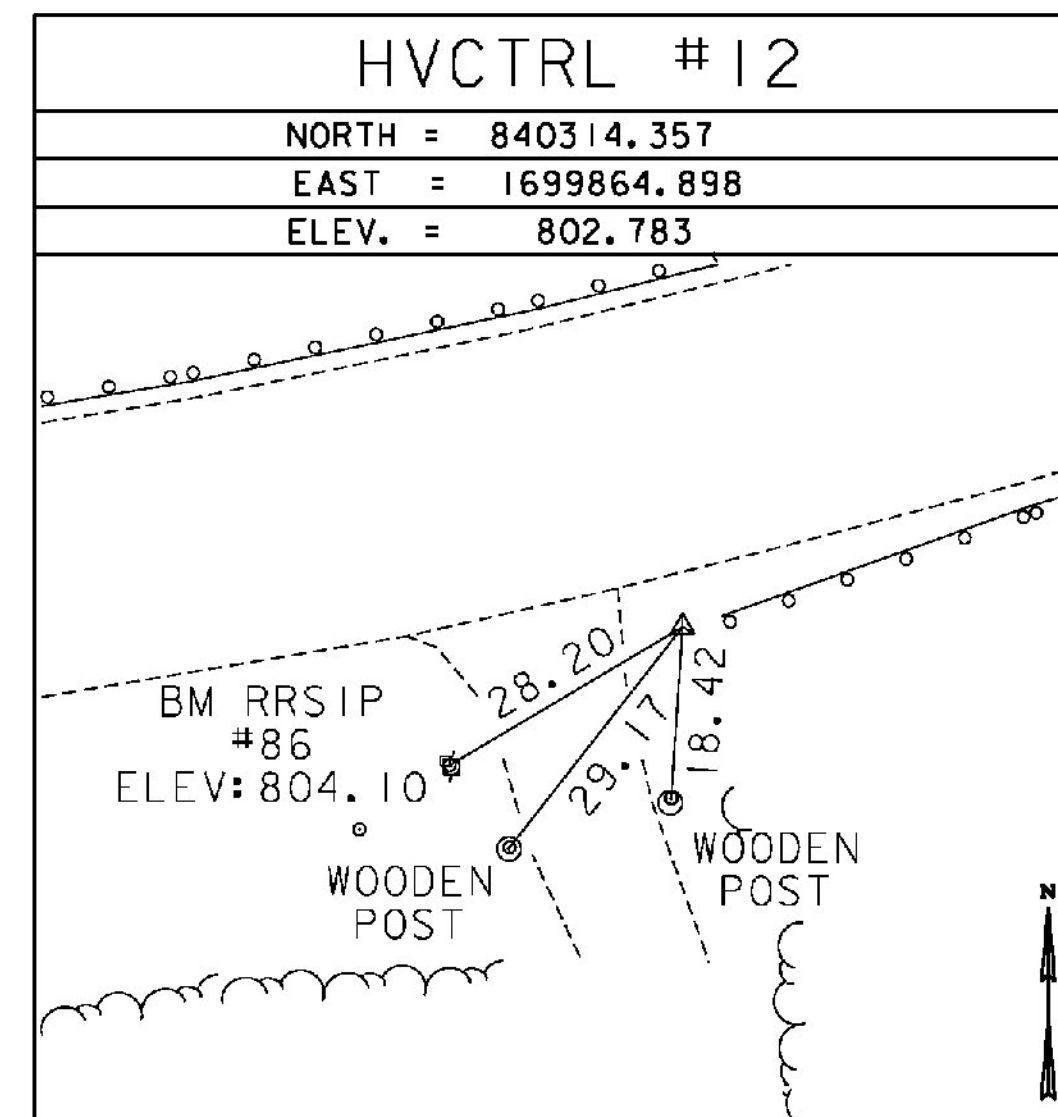
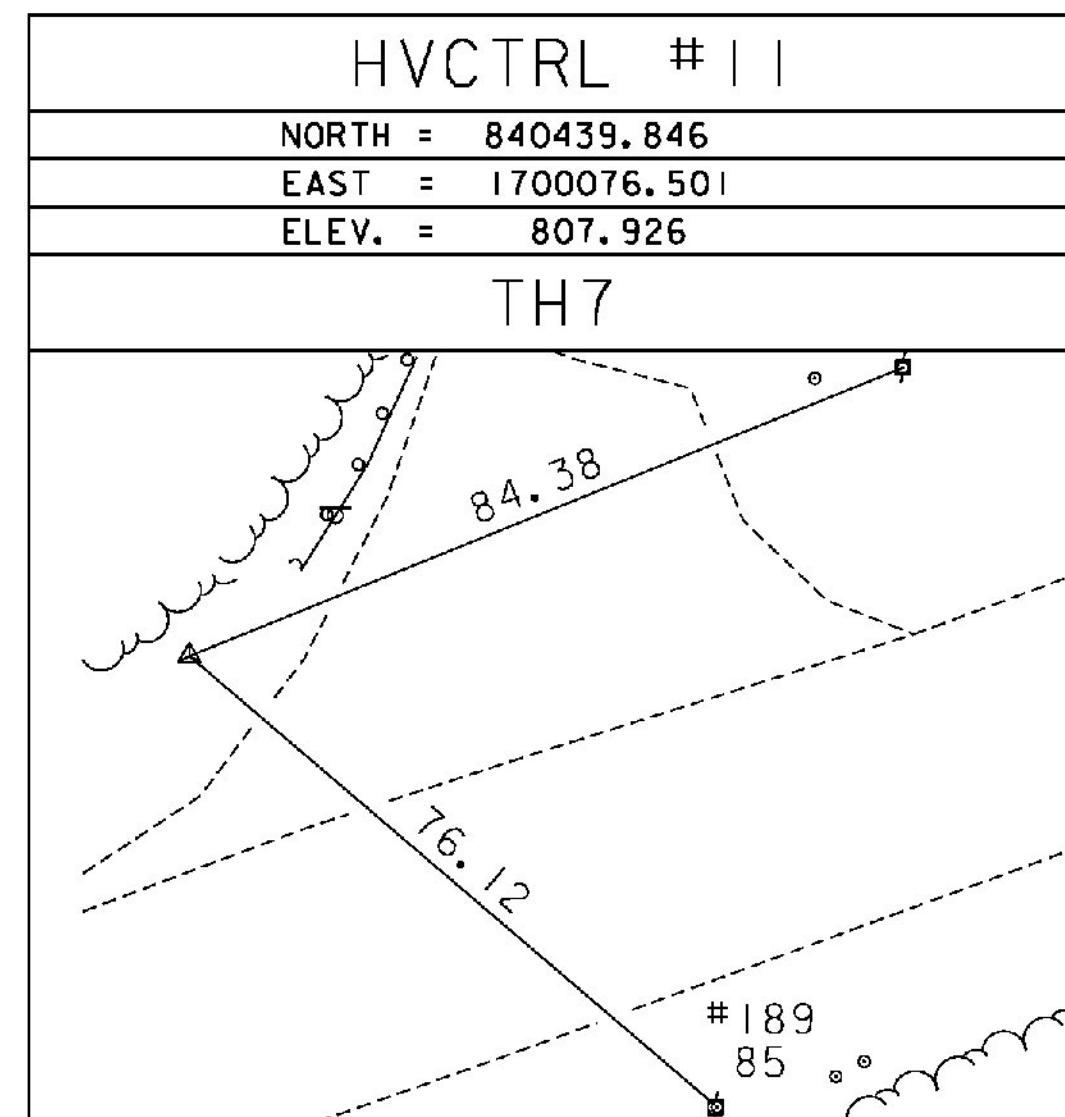
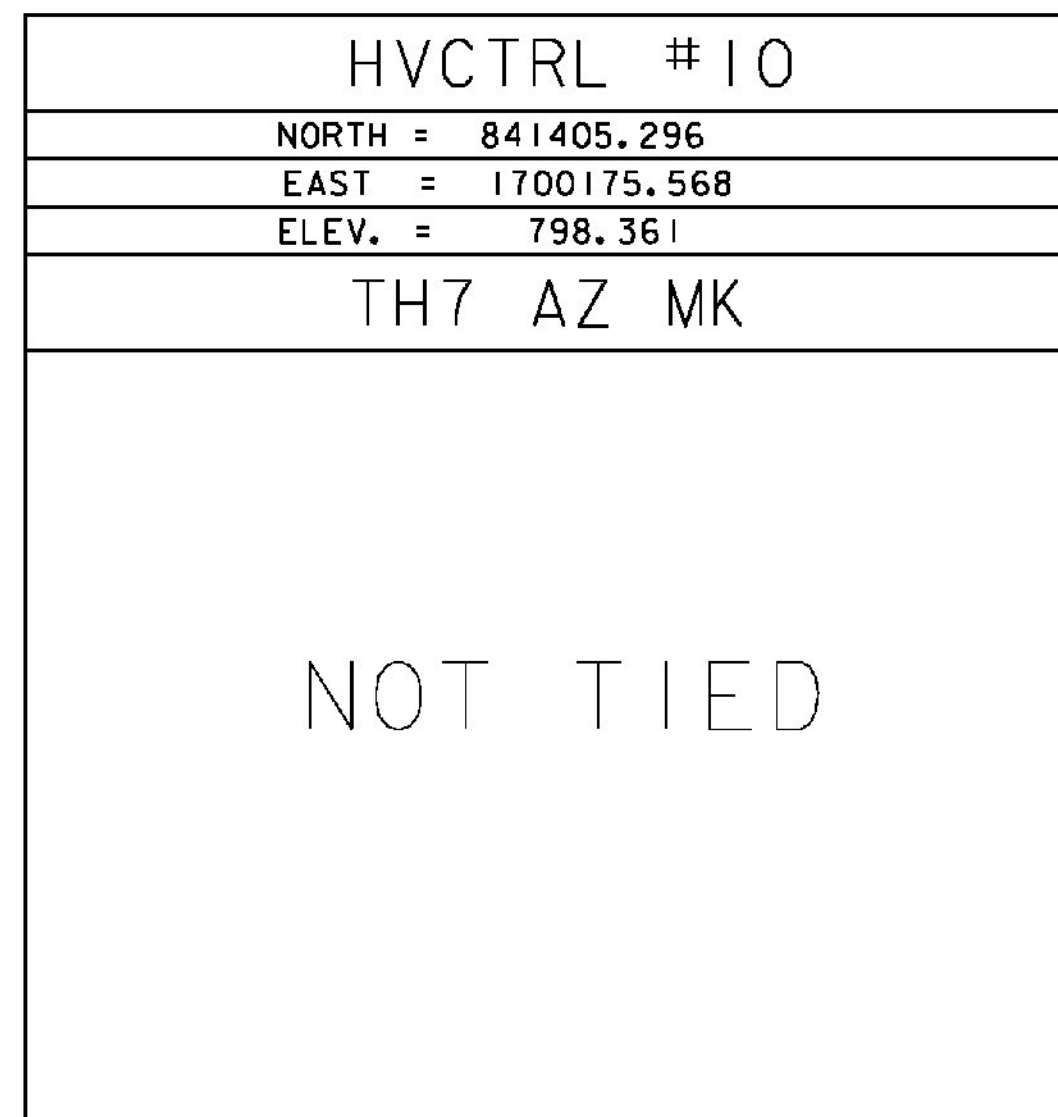


GPS CONTROL POINTS

COORDINATES WERE DERIVED FROM STATIC NETWORK OBSERVATIONS WITH A LEAST SQUARES ADJUSTMENT. THE FOLLOWING CONTINUOUSLY OPERATING GPS REFERENCE STATIONS [CORS] WERE USED.

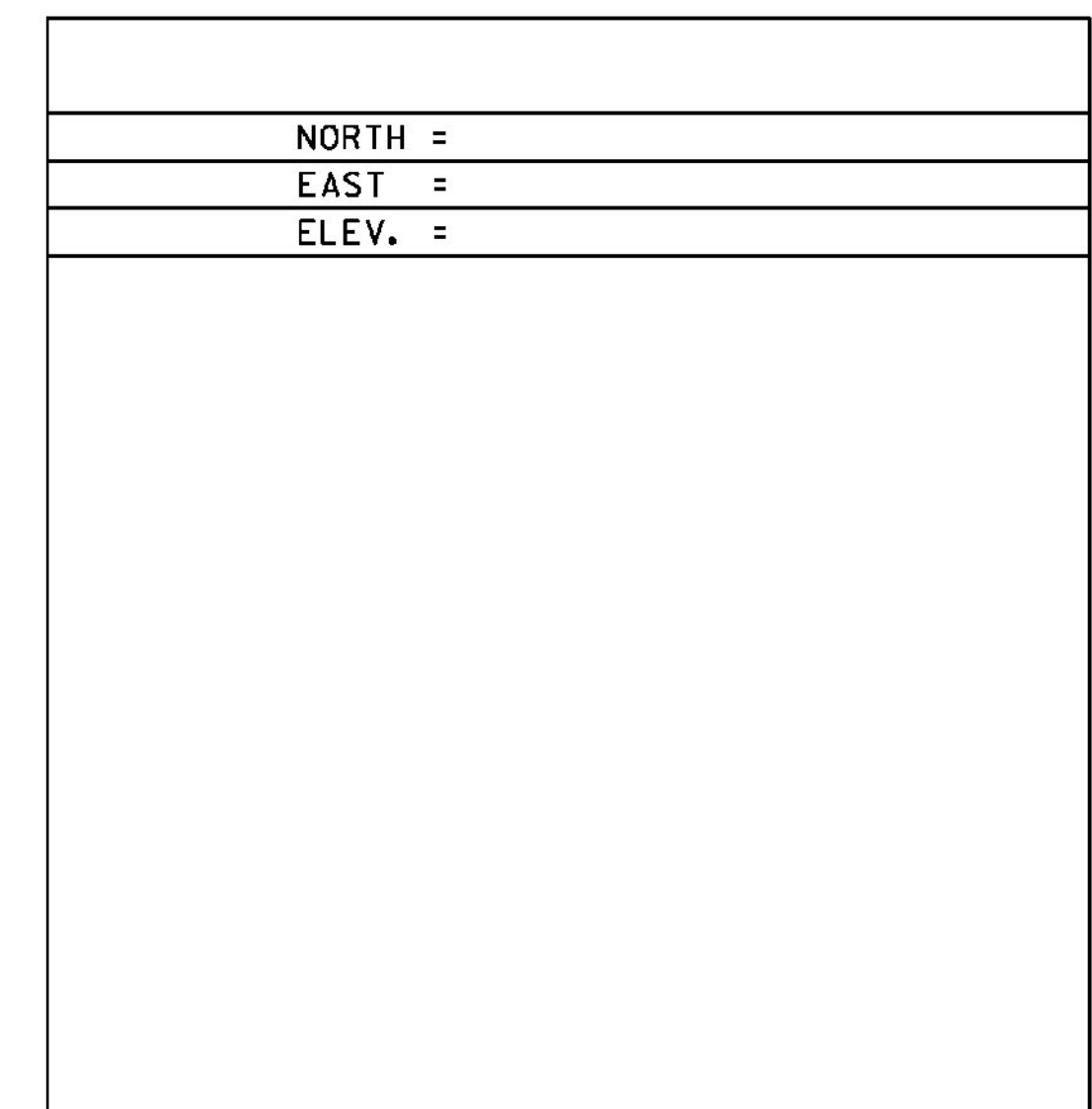
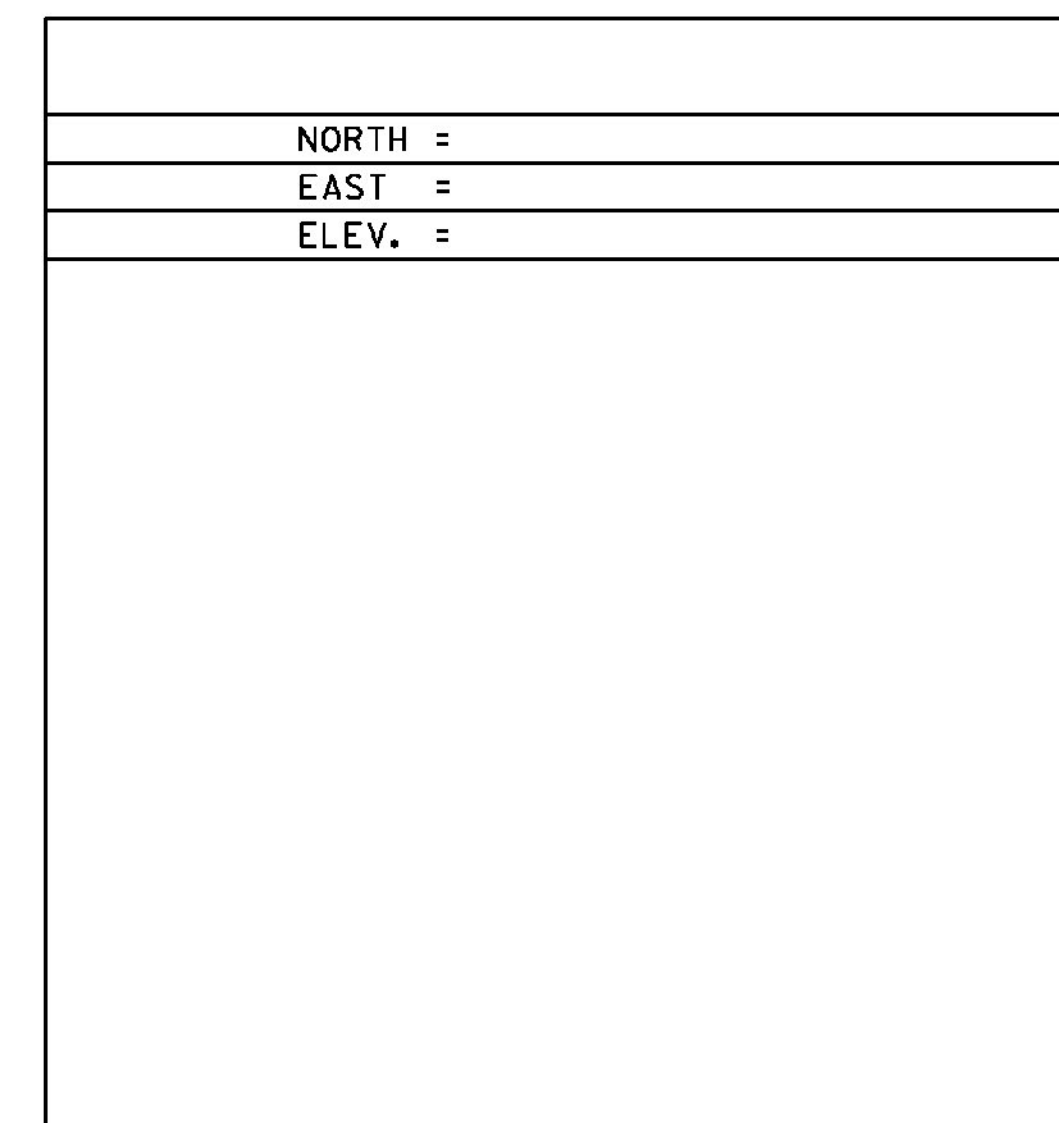
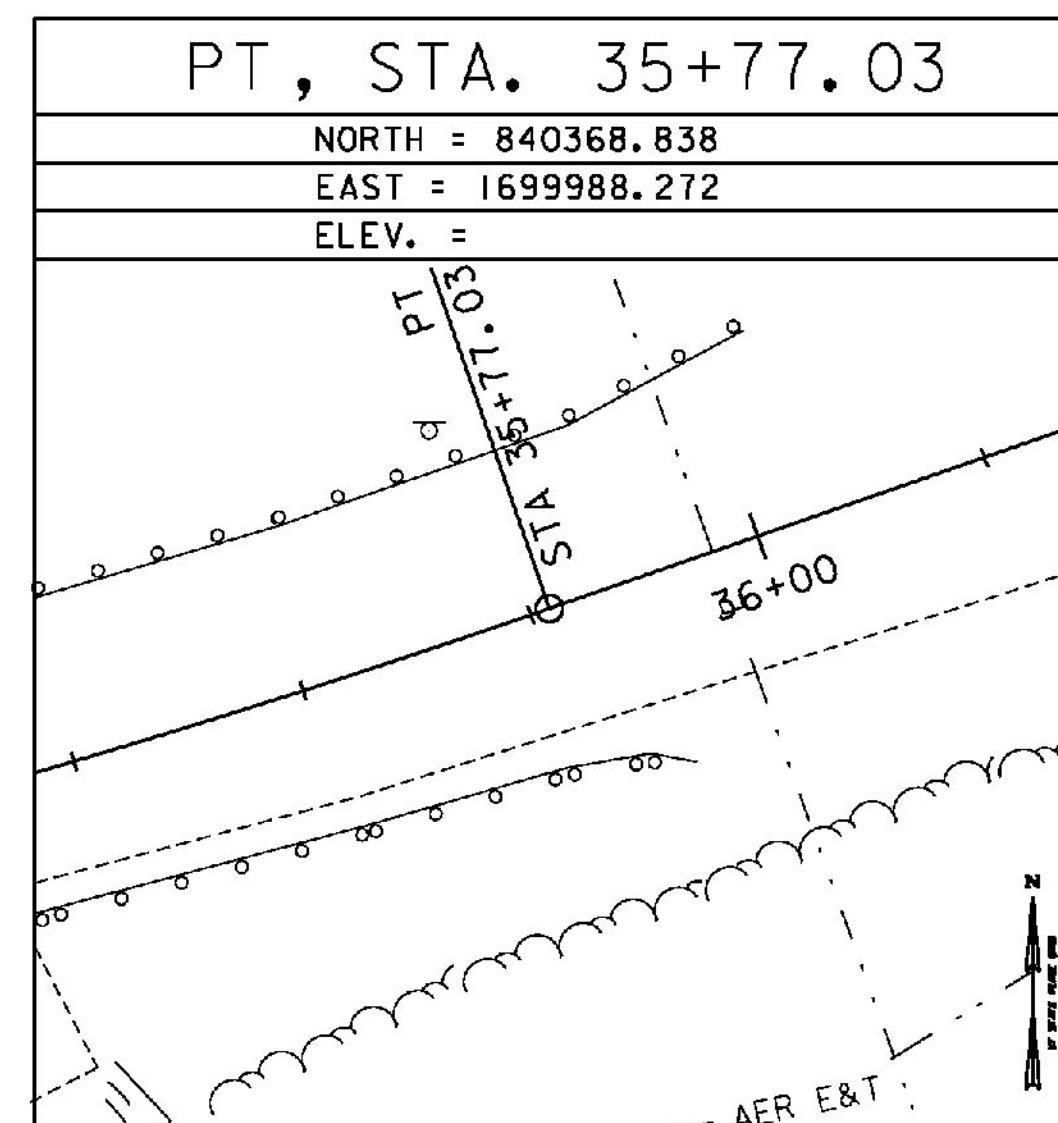
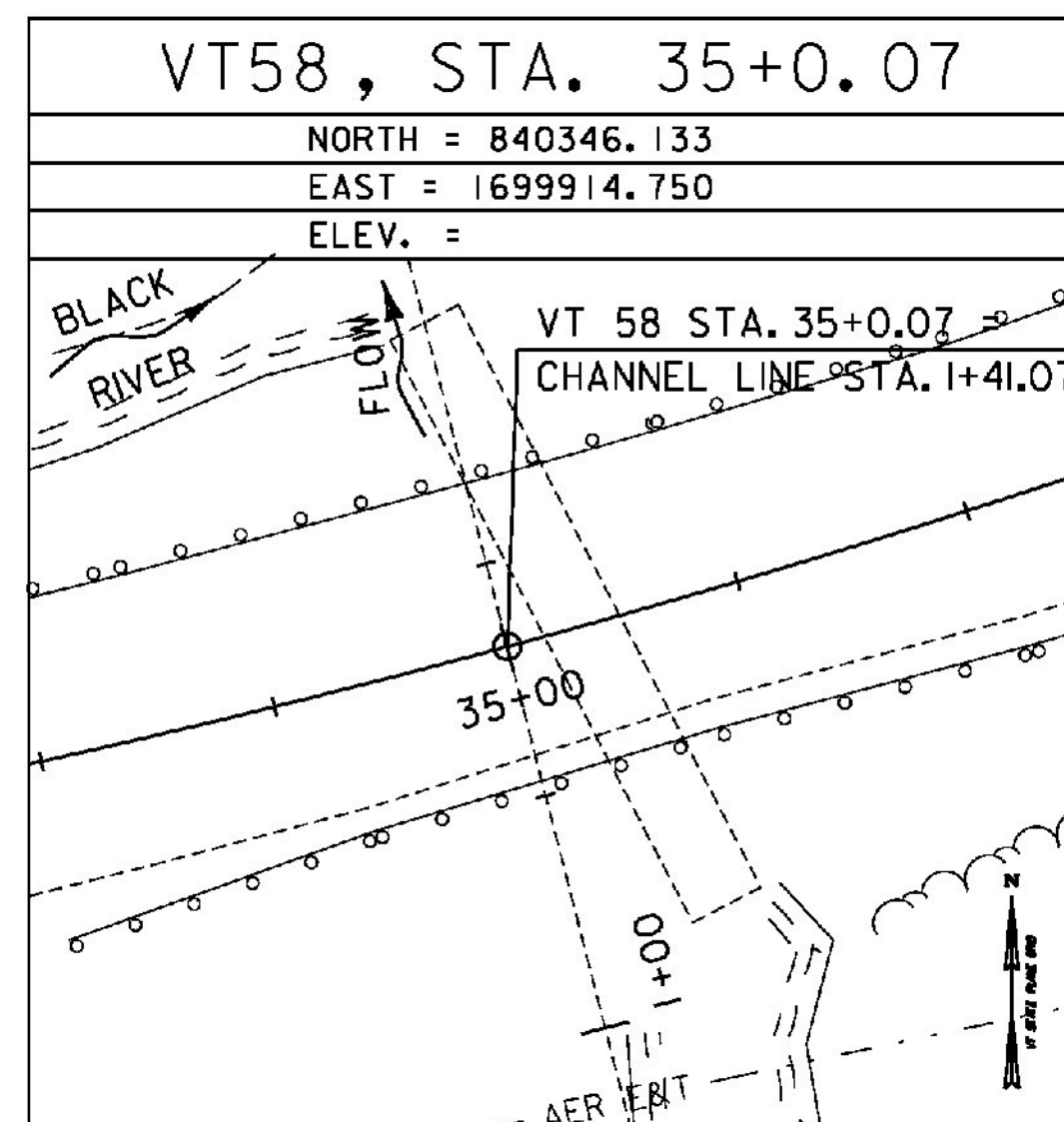
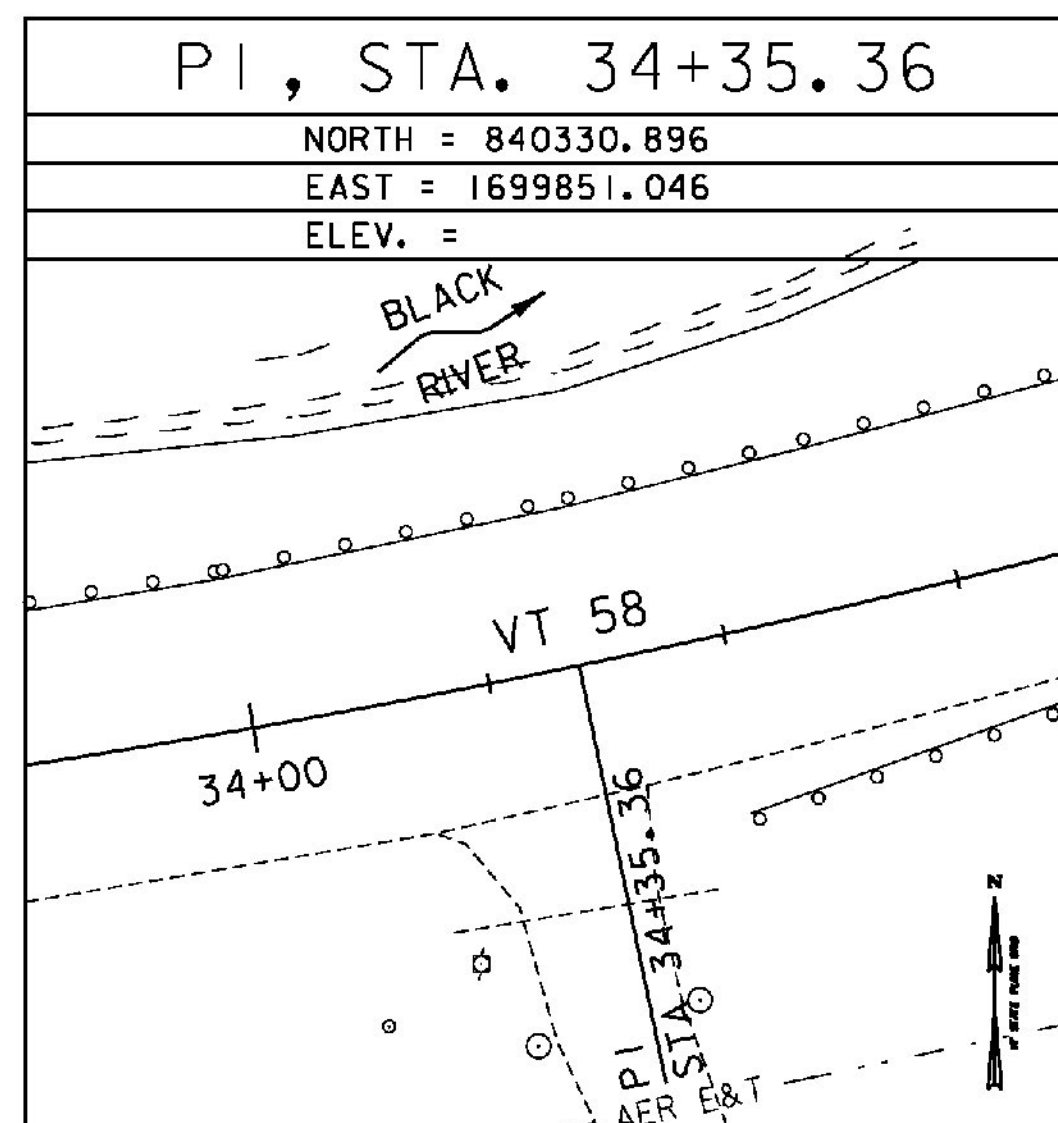
HARDWICK CORS ARP  
 DERBY CORS ARP  
 ISLAND POND CORS ARP

TRAVERSE TIES



\* MAIN TRAVERSE COMPLETED 2/8/2012 BY R. GILMAN P.C. & P. WINTERS

ALIGNMENT TIES



DATUM	
VERTICAL	NAVD 88
HORIZONTAL	NAD 83(07)
ADJUSTMENT	COMPASS
ZONE	Vermont 4400
GEOID	GEOID09 (Conus)



PROJECT NAME:	IRASBURG
PROJECT NUMBER:	STP CULV(30)
FILE NAME:	z11c266+1e_br7.dgn
PROJECT LEADER:	M. CHENETTE
DESIGNED BY:	J. HUNGERFORD
SURVEY CONTROL AND TIES - BR7	
PLOT DATE:	9/26/2014
DRAWN BY:	L. BUXTON
CHECKED BY:	M. CHENETTE
SHEET	34 OF 55