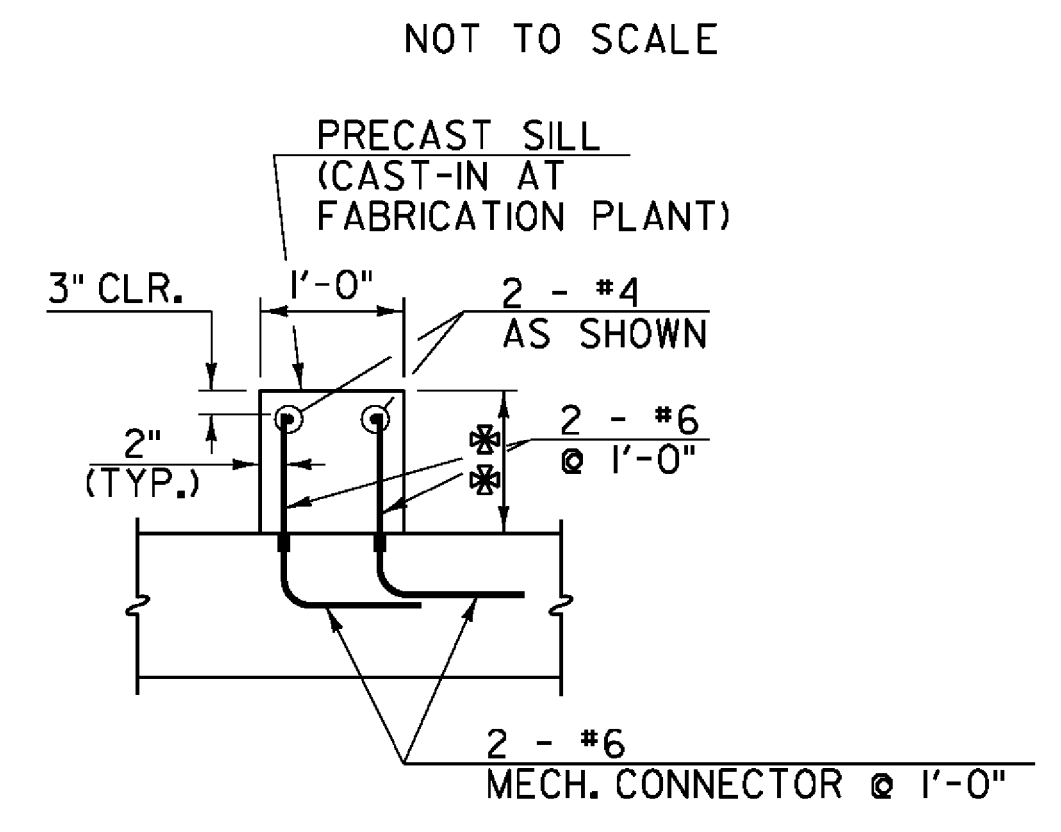


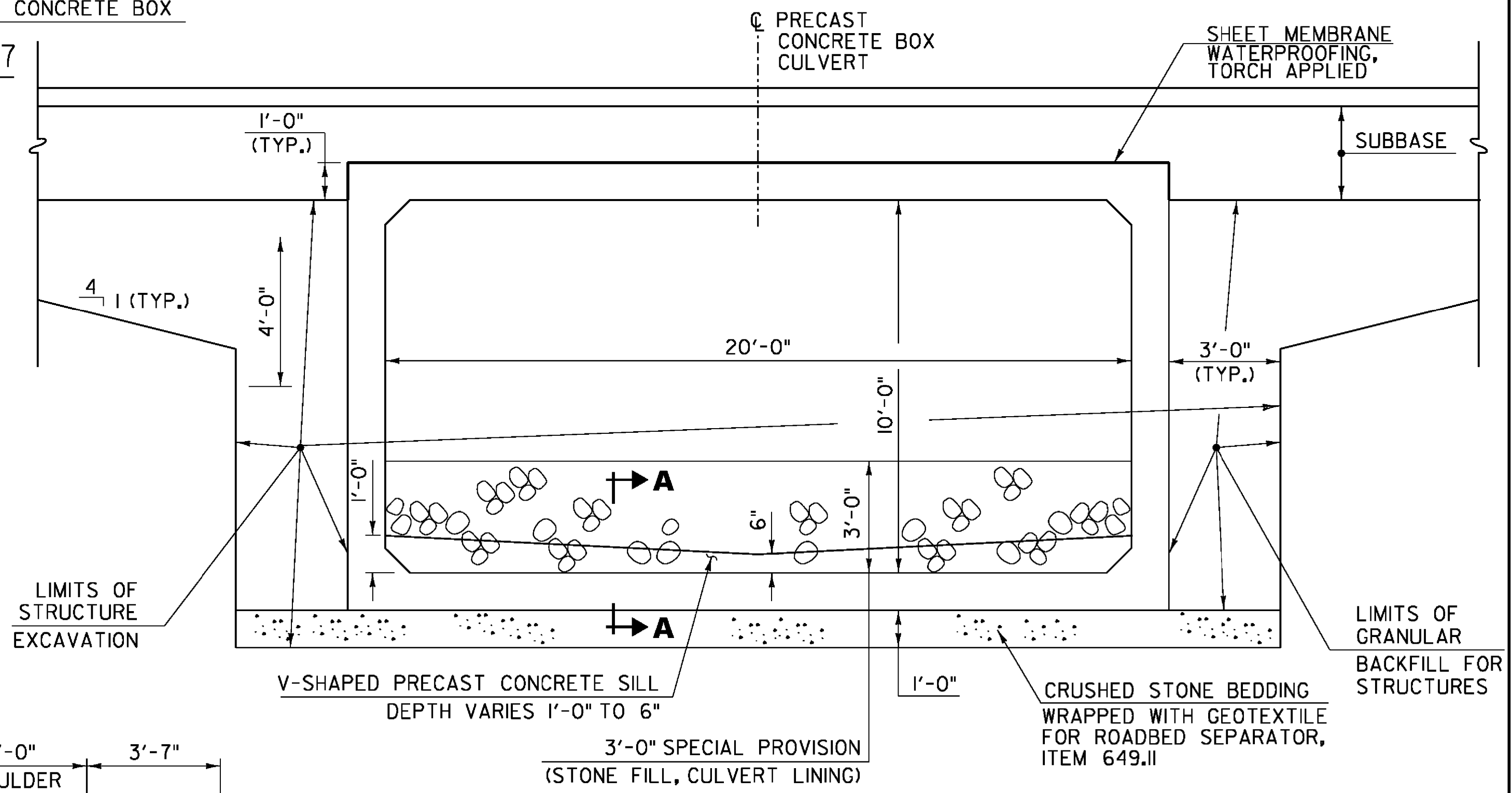
CHANNEL TYPICAL SECTION
NOT TO SCALE

✱ WHENEVER CHANNEL SLOPE INTERSECTS ROADWAY SUBBASE, GRUBBING MATERIAL SHALL BEGIN AT THE BOTTOM OF SUBBASE.

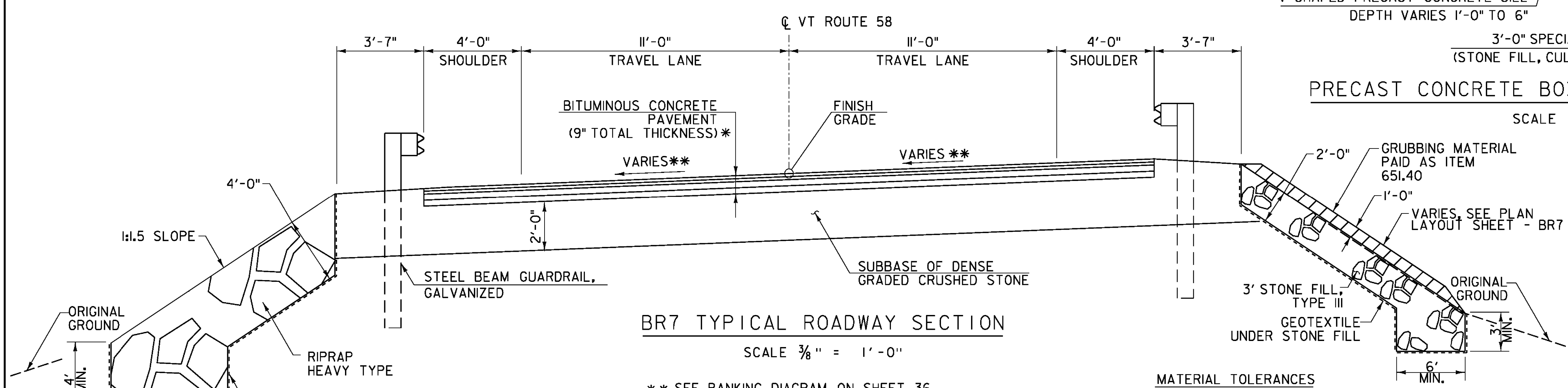
TYPICAL APPROACH SECTION - BR7
NOT TO SCALE



DEPTH VARIES 1'-0" TO 6"
SECTION A-A
NOT TO SCALE



PRECAST CONCRETE BOX TYPICAL SECTION - BR7
SCALE 3/8" = 1'-0"



BR7 TYPICAL ROADWAY SECTION
SCALE 3/8" = 1'-0"

** SEE BANKING DIAGRAM ON SHEET 36, MATCH EXISTING CROSS SLOPE ON APPROACHES.
* BITUMINOUS CONCRETE PAVEMENT:
1/2" TYPE IVS OVER
1/2" TYPE IVS OVER
3" TYPE IIS OVER
3" TYPE IIS

MATERIAL TOLERANCES (IF USED ON PROJECT)

SURFACE	
- PAVEMENT (TOTAL THICKNESS)	+/- 1/4"
- AGGREGATE SURFACE COARSE	+/- 1/2"
SUBBASE	
- SAND BORROW	+/- 1"

BUILT AS DESIGNED



PROJECT NAME:	IRASBURG	PLOT DATE:	9/26/2014
PROJECT NUMBER:	STP CULV(30)	DRAWN BY:	L. BUXTON
FILE NAME:	zllc266typsec.dgn	DESIGNED BY:	J. HUNGERFORD
PROJECT LEADER:	M. CHENETTE	CHECKED BY:	M. CHENETTE
TYPICAL SECTIONS - BR7		SHEET 33 OF 55	