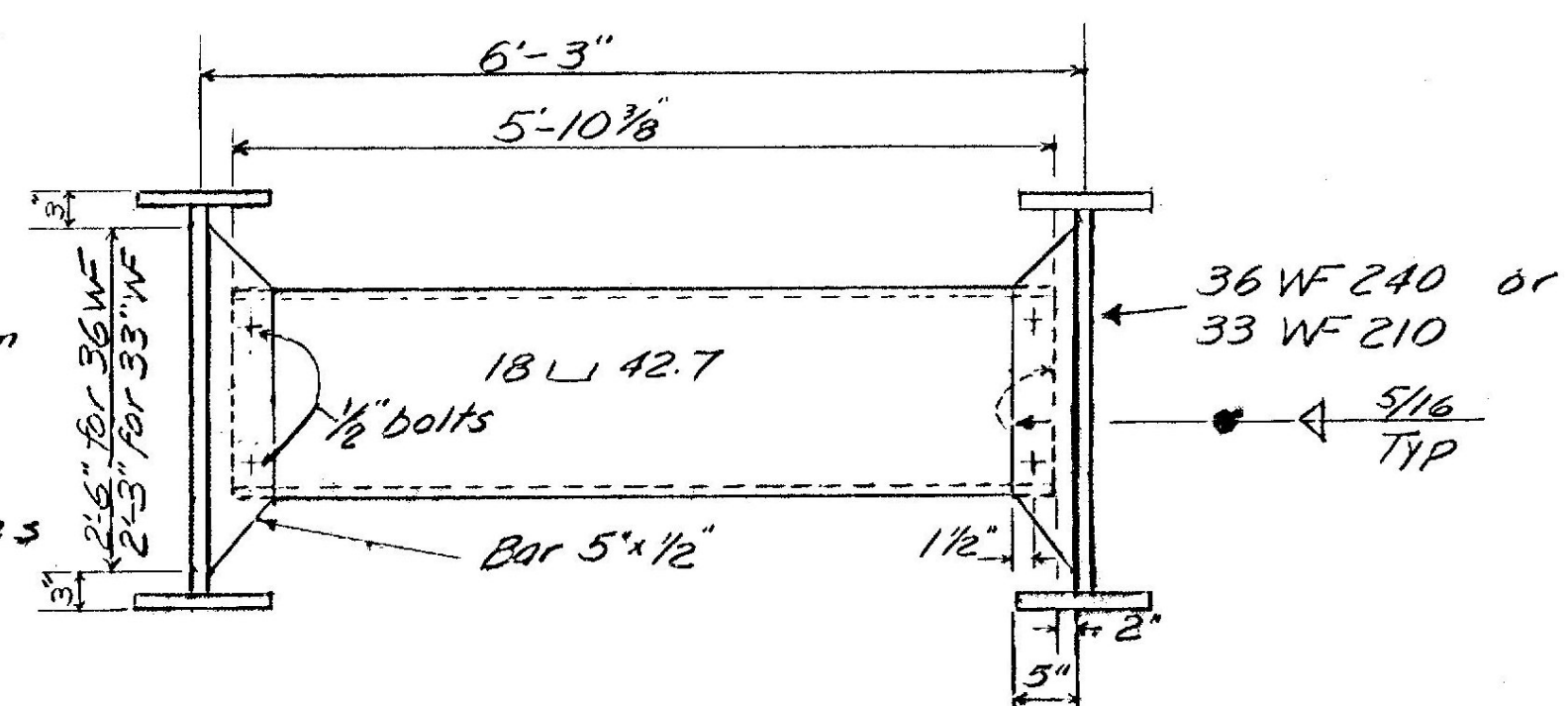


Framing Plan

Existing intermediate diaphragms between fascia beams and adjacent beam to be removed and replaced with new 18 L 42.7. All connections to be welded. Two 1/2" bolts may be used at each end for erection purposes. For Pier diaphragm details see sheet #5



Intermediate Diaphragms Typical  
For details not shown see SCB-D7-65

HARTLAND  
BRIDGE 66  
BHF BPNT(12)  
SHEET 55 OF 55  
FOR  
REFERENCE  
ONLY

STATE OF VERMONT  
DEPARTMENT OF HIGHWAYS

TOWN OF Hartland  
ROUTE NO. US 5 LOG STA. 313+85  
US 5 Bridge over C.V.R.R.  
Framing Plan  
SCALE 1/8" = 1'-0"  
In Charge R.H. Watson  
DRAWN BY M. Radmond CHECKED BY D. Mayo  
PROJECT NO. SP041-2-6533  
SHEET 6 OF 24