

New floor slab to be class AA concrete. The thickness to match existing slab. Surface to be screeded, floated and broomed.
 New wearing surface to be 2" of bituminous concrete pavement, Item 361 (Mod) Two Courses of Type II Mix 222-0

Exist. pavement inside cut line to be removed and remainder of slab to be cleaned @ all 3 spans as specified under Item 591 - Preparing Exist. Pavement for New Wearing Surface

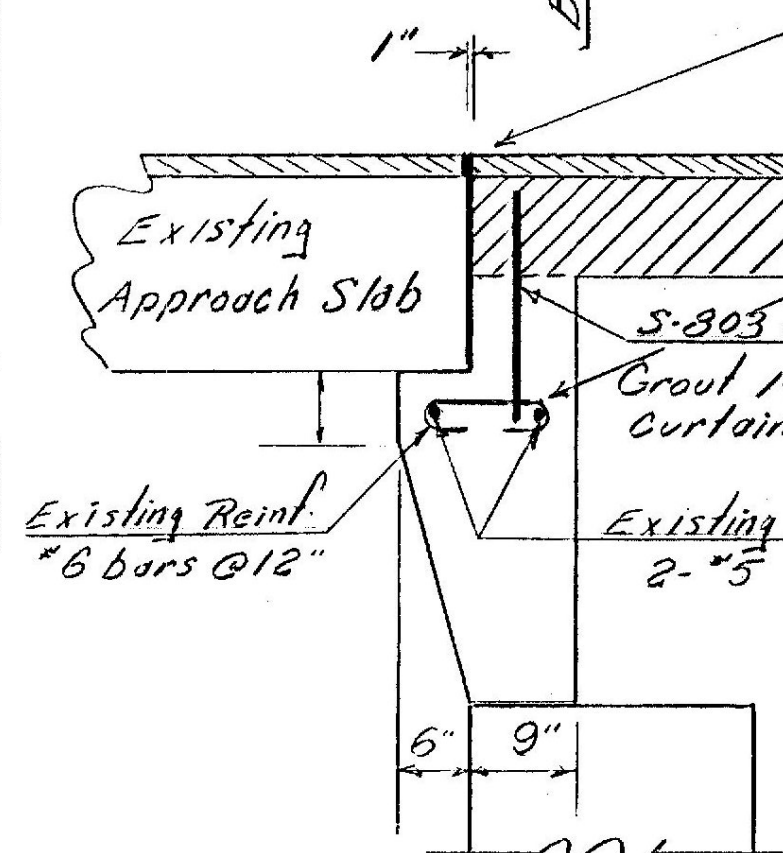
Retain existing deck slab in each span as outlined by dashed lines.
 Remove existing deck slab and curb from existing fascia to 5'-0" off centerline and along pier joints as shown

Note:
 Remove existing approach slab curbs to top of existing approach slab concrete as Item 103-B. (Typical Both ends of bridge).
 Item 372-A Joint sealer Hot Poured
 For details not shown see SB-AS-65 Section B-B

PLAN
 Scale: 1/8" = 1'-0"

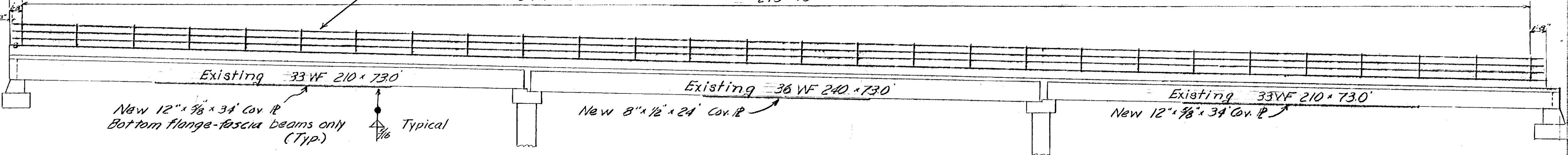
Remove existing blast plates & gunite haunching from span 2 fascia beams. Payment for this work to be made under Item 575 - Preparing Superstructure for Widening

A saw cut along top of slab to existing reinforcing steel shall be made along all indicated lines where concrete is to be removed to provide a vertical breaking edge. At the contractor's option the joint may be sawed along the top of slab and line drilled @ uniform spacing to provide vertical breaking edge. Payment for this work to be included under Item 575, Preparing Superstructure for Widening



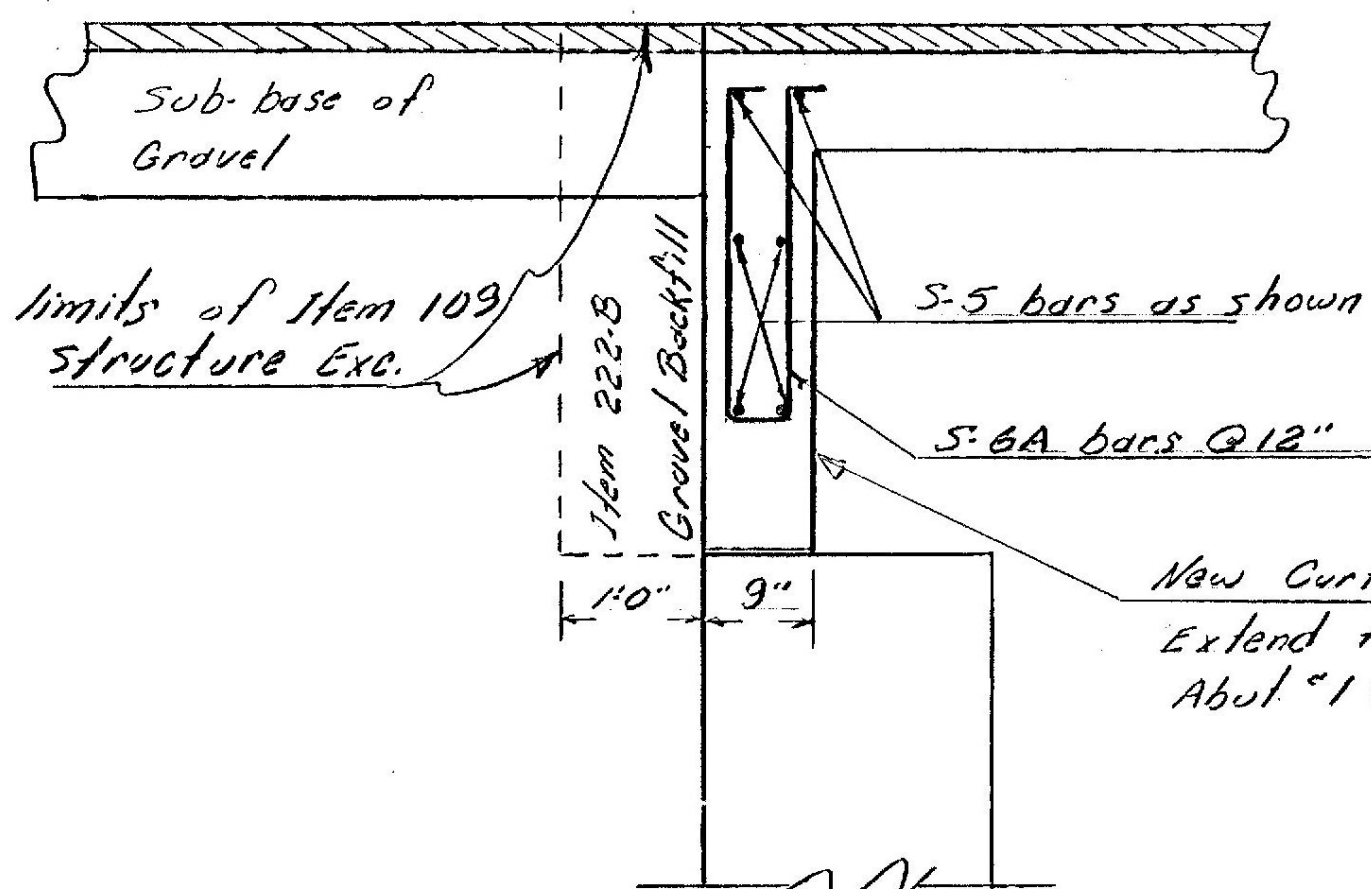
Retain existing curtain wall and approach slab bracket

Aluminum Bridge Rail Item 572
 For details see SB-RI-64 sheets 1 and 2



Spans 1 and 3
 12" x 9/8" x 34" Cov. R to be welded to bot flange of fascia beams. Center of Cov. R to be positioned at center of span. For details not shown see SCB-D7-65 Detail C

Span 2
 8" x 1/2" x 24" Cov. R to be welded to bot flange of fascia beams. Center of Cov. R to be positioned at center of span. For details not shown see SCB-D7-65 Detail C



New Curtain Wall - Typical
 Extend to existing Curtain Wall, About 1' ±

**HARTLAND
 BRIDGE 66
 BHF BPNT(12)
 SHEET 53 OF 55
 FOR
 REFERENCE
 ONLY**

STATE OF VERMONT
 DEPARTMENT OF HIGHWAYS

TOWN OF Hartland
 ROAD NO. US 5 Log STA. 313+85
 Route 5 Bridge over C.V. Ry.
 Plan and Elevation
 SCALE: 1/8" = 1'-0"
 In Charge R.H. Watson
 DRAWN BY M. Raymond CHECKED BY D. Mayo
 PROJECT NO. SP-O&I-2-6333
 SHEET 4 OF 24