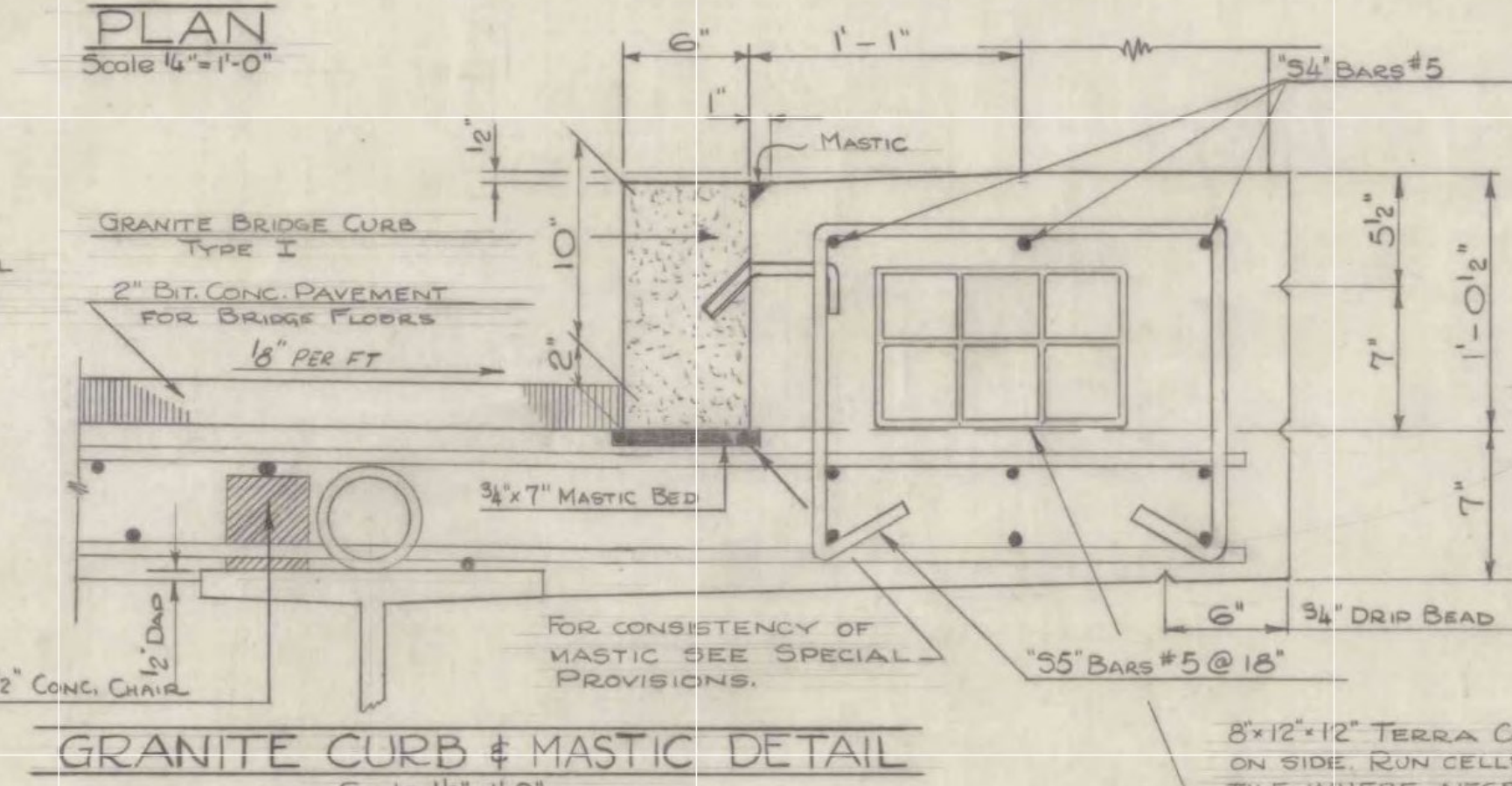
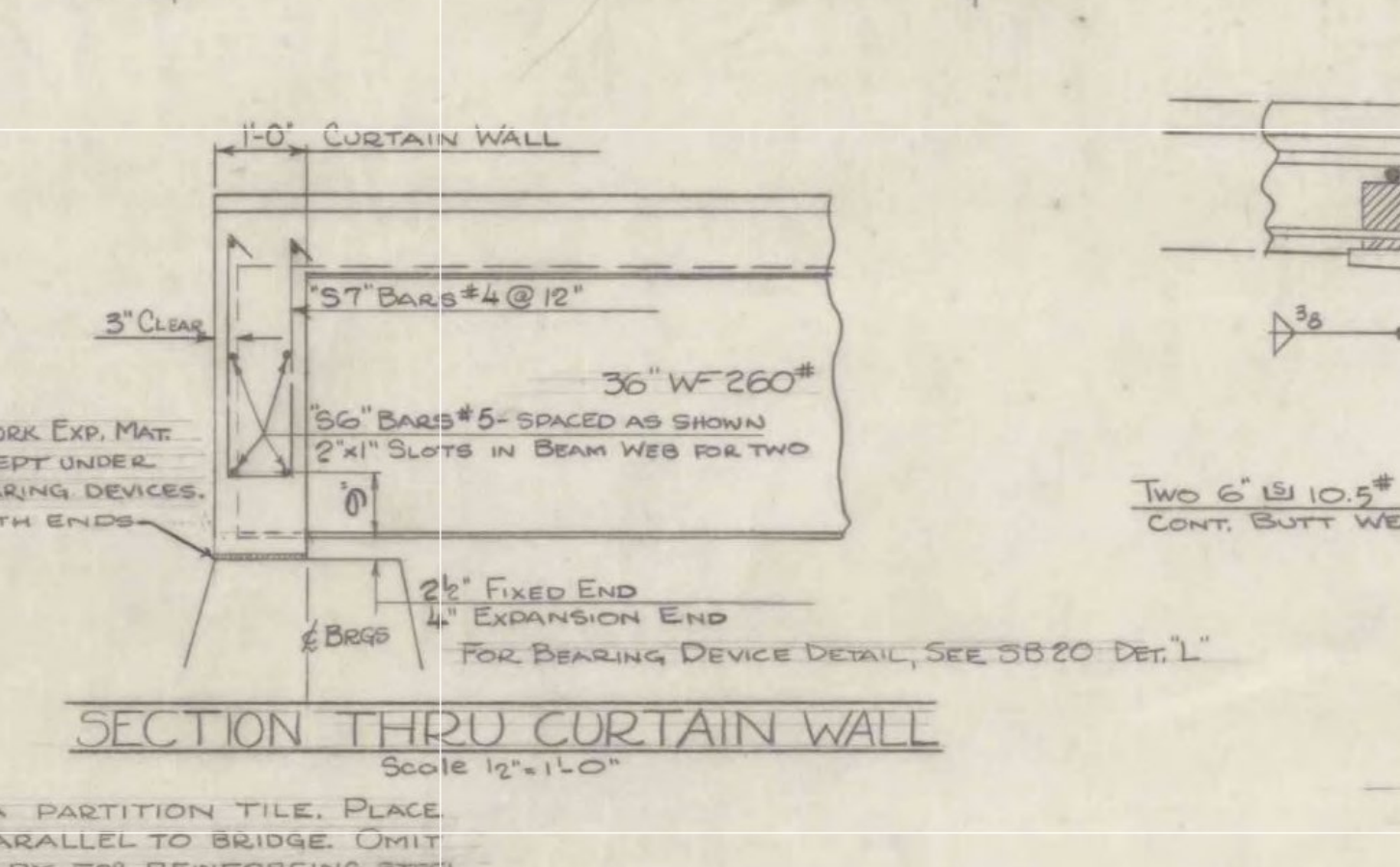


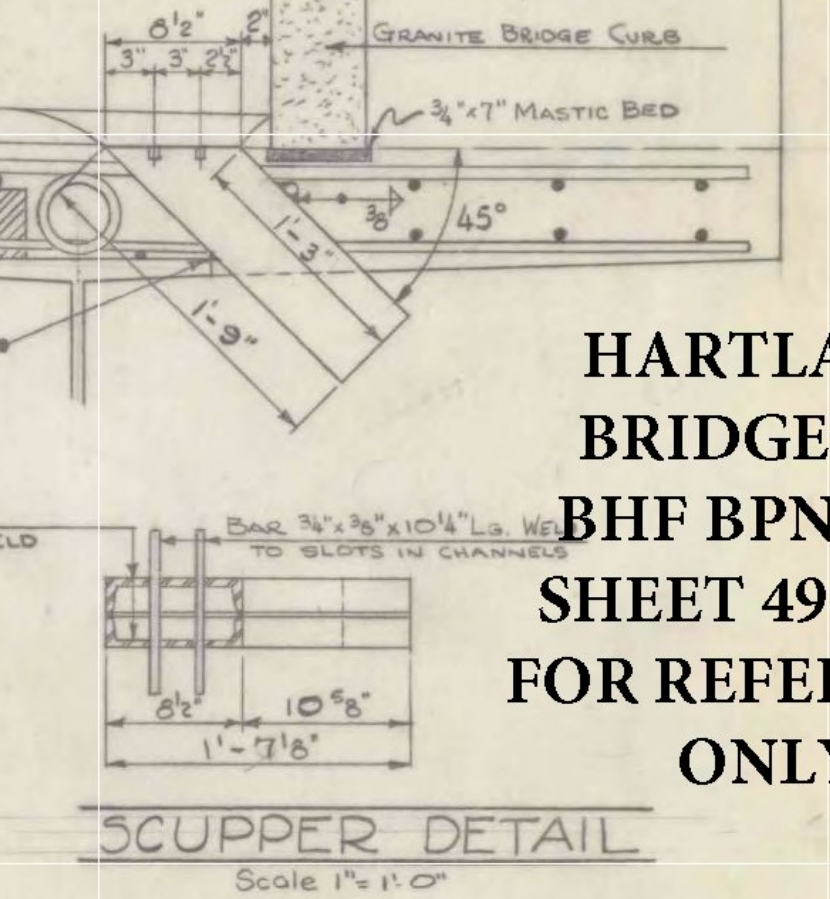
TYPICAL HALF SECTION
Scale 3/8" = 1'-0"



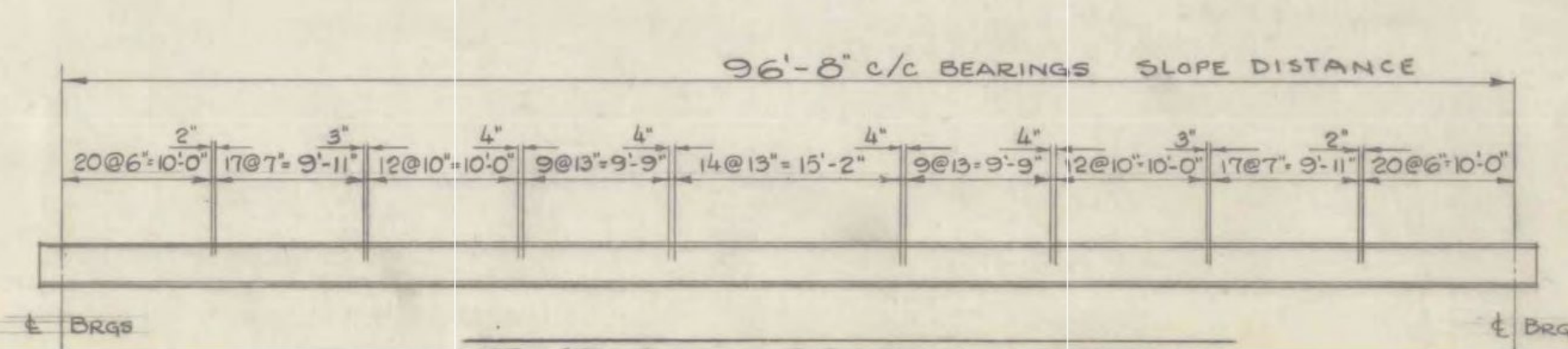
GRANITE CURB & MASTIC DETAIL
Scale 1/2" = 1'-0"



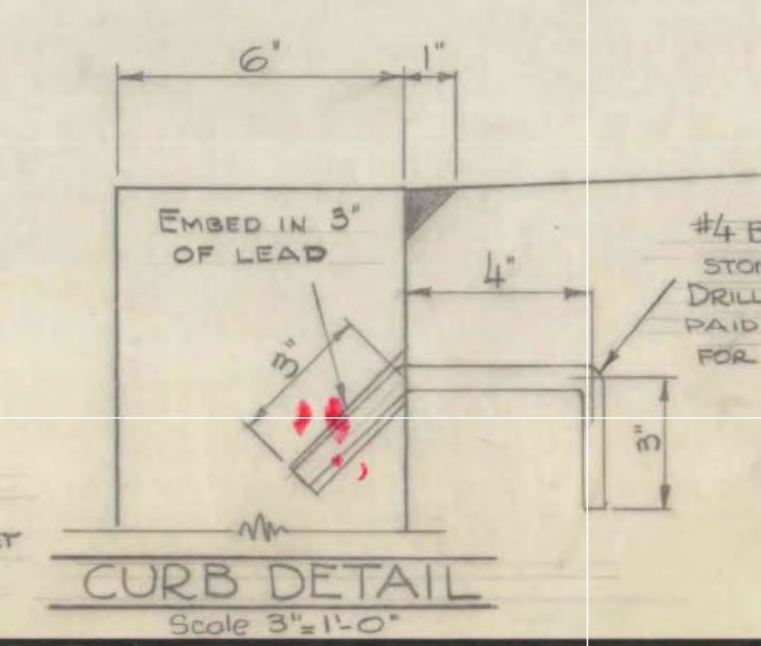
SECTION THRU CURTAIN WALL
Scale 1/2" = 1'-0"



SCUPPER DETAIL
Scale 1" = 1'-0"



TYPICAL SPIRAL DETAIL
Scale 3/32" = 1'-0"



CURB DETAIL
Scale 3/8" = 1'-0"

5'x12'x12" TERRA COTTA PARTITION TILE. PLACE ON SIDE RUN CELLS PARALLEL TO BRIDGE. OMIT TILE WHERE NECESSARY FOR REINFORCING STEEL IN RAILING POSTS. PLUG OPENINGS TO PREVENT HOLLOW TILE FROM FILLING WITH CONCRETE. TILE TO BE PAID FOR UNDER UNIT PRICE BID FOR CONC. CL. B, ITEM 401-B. IN COMPUTING THE VOLUME OF CONCRETE, NO DEDUCTION SHALL BE MADE FOR THE VOLUME DISPLACED BY THE TILE.

NOTES:-
ALL BEAMS TO BE ROLLED TO A TRUE CIRCULAR CAMBER THE FULL LENGTH OF BEAM. THE MIDDLE ORDINATE SHALL BE 3 3/8". CONCRETE SHALL BE CLASS B MODIFIED.
ONE HALF BAG ADDITIONAL CEMENT, OVER AND ABOVE THE AMOUNT SHOWN IN STATE OF VERMONT DEPT. OF HIGHWAYS, STD. SPECIFICATIONS FOR ROAD AND BRIDGE CONSTRUCTION DATED NOV. 1948, SHALL BE ADDED TO EACH CUBIC YARD OF CLASS B, C, & D CONCRETE.
SEE SPECIAL PROVISIONS FOR CURING CONCRETE.

FINAL QUANT.			
40	361-B	BITUMINOUS CONC. PAVEMENT (CLASS I)	41 TONS
105	401-B	CONCRETE, CLASS "B" (MOD.)	112 C.Y.
995	402	REINFORCING STEEL (SEE REINF. STEEL SHEET)	1120 LBS.
153,842	403-A	STRUCTURAL STEEL	158,000 LBS.
199	556-C	GRANITE BRIDGE CURB	199 LF.
188	572	BRIDGE RAILING (MOD.)	188 LF.

STATE OF VERMONT
DEPARTMENT OF HIGHWAYS

TOWN OF HARTLAND
ROUTE No. US 5 ^{B67A} LOG STA. 204+82
SUPERSTRUCTURE DETAILS

SCALE AS NOTED
SURVEYED BY FUNK
DRAWN BY JJ CHECKED BY J.L.H.
PROJECT No. FG 77 (11)
SHEET 14 OF 54

HARTLAND
BRIDGE 62A
BHF BPNT(12)
SHEET 49 OF 55
FOR REFERENCE
ONLY