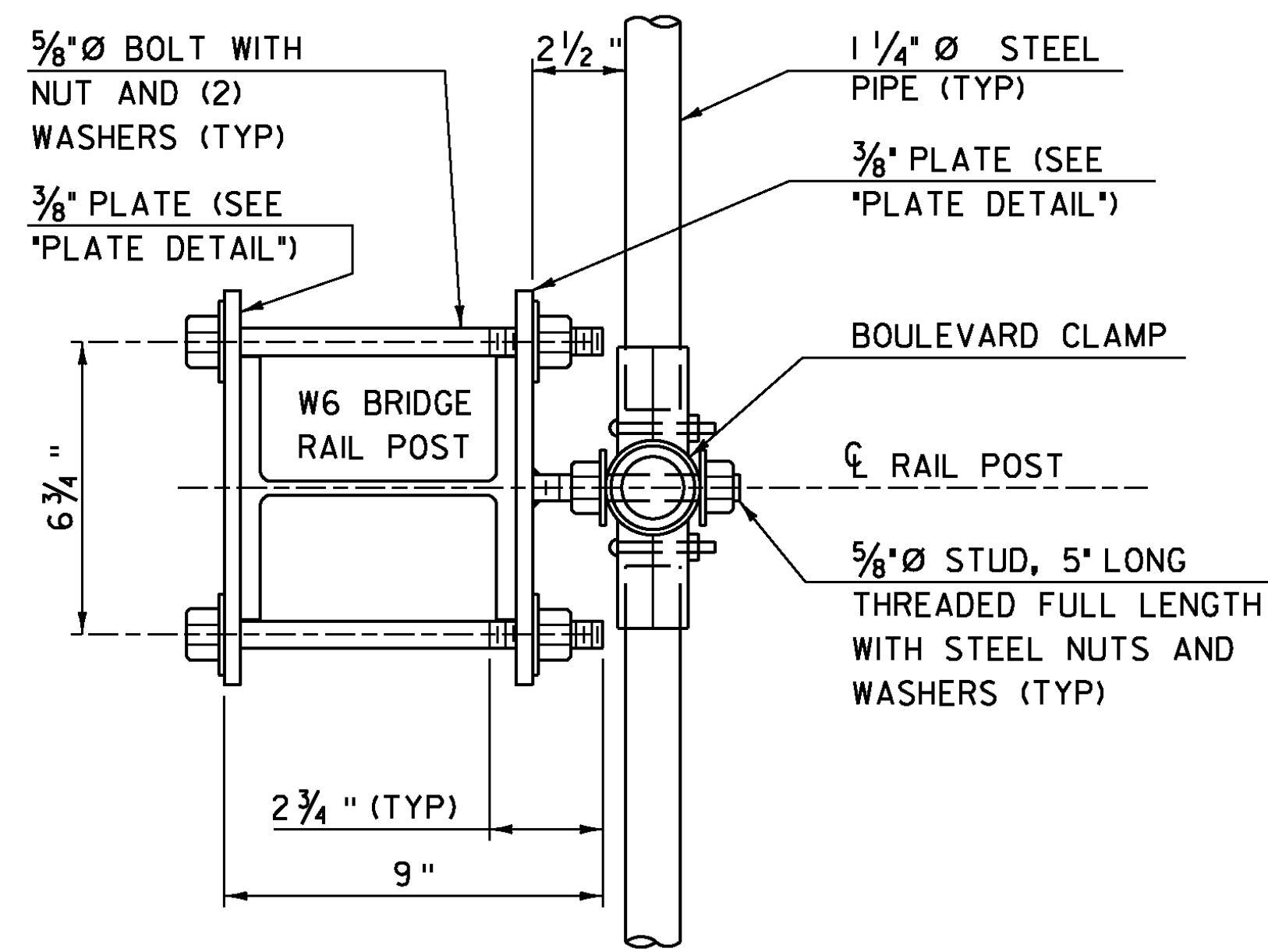
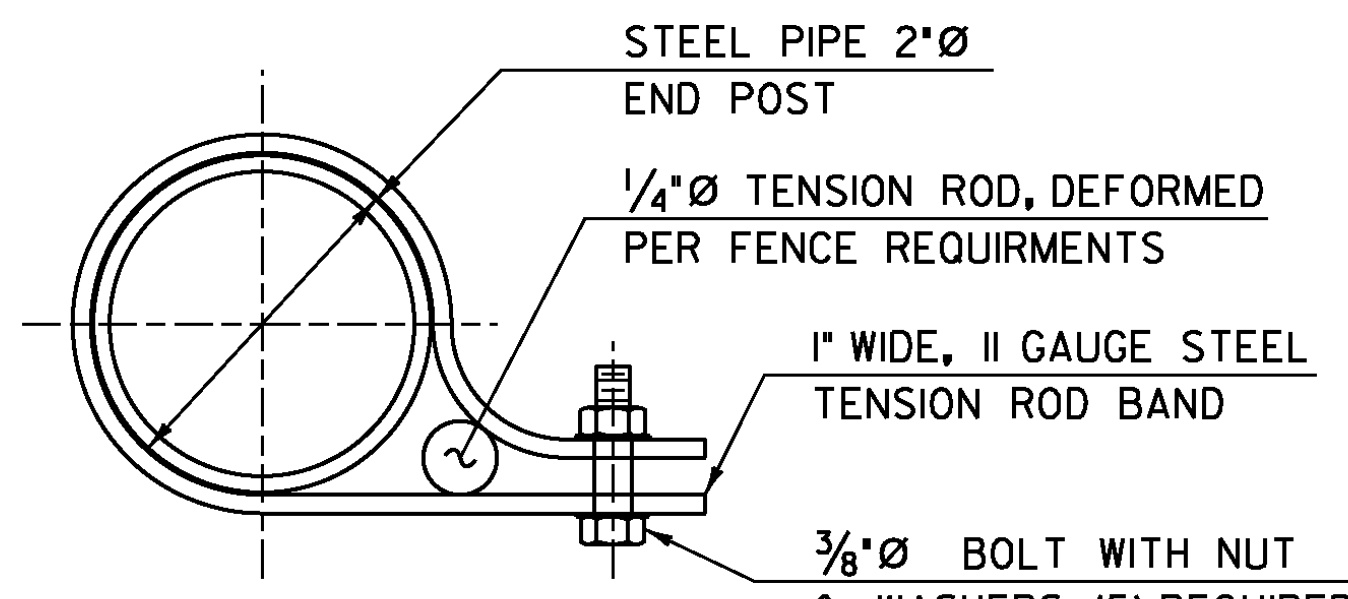


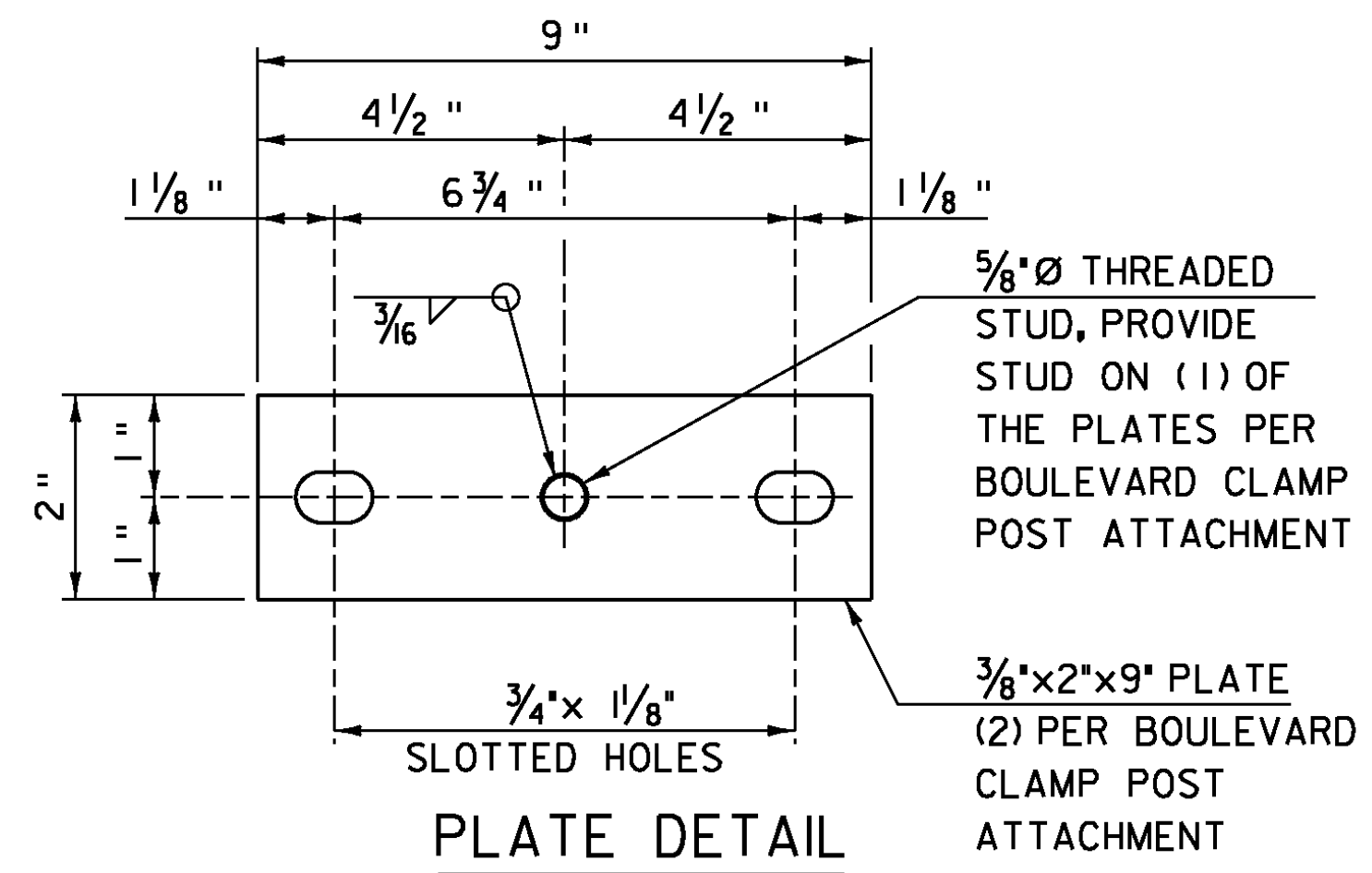
**TYPICAL SECTION**  
FOR SPECIFIC RAIL CONFIGURATION  
AND SIZES SEE PLAN SET



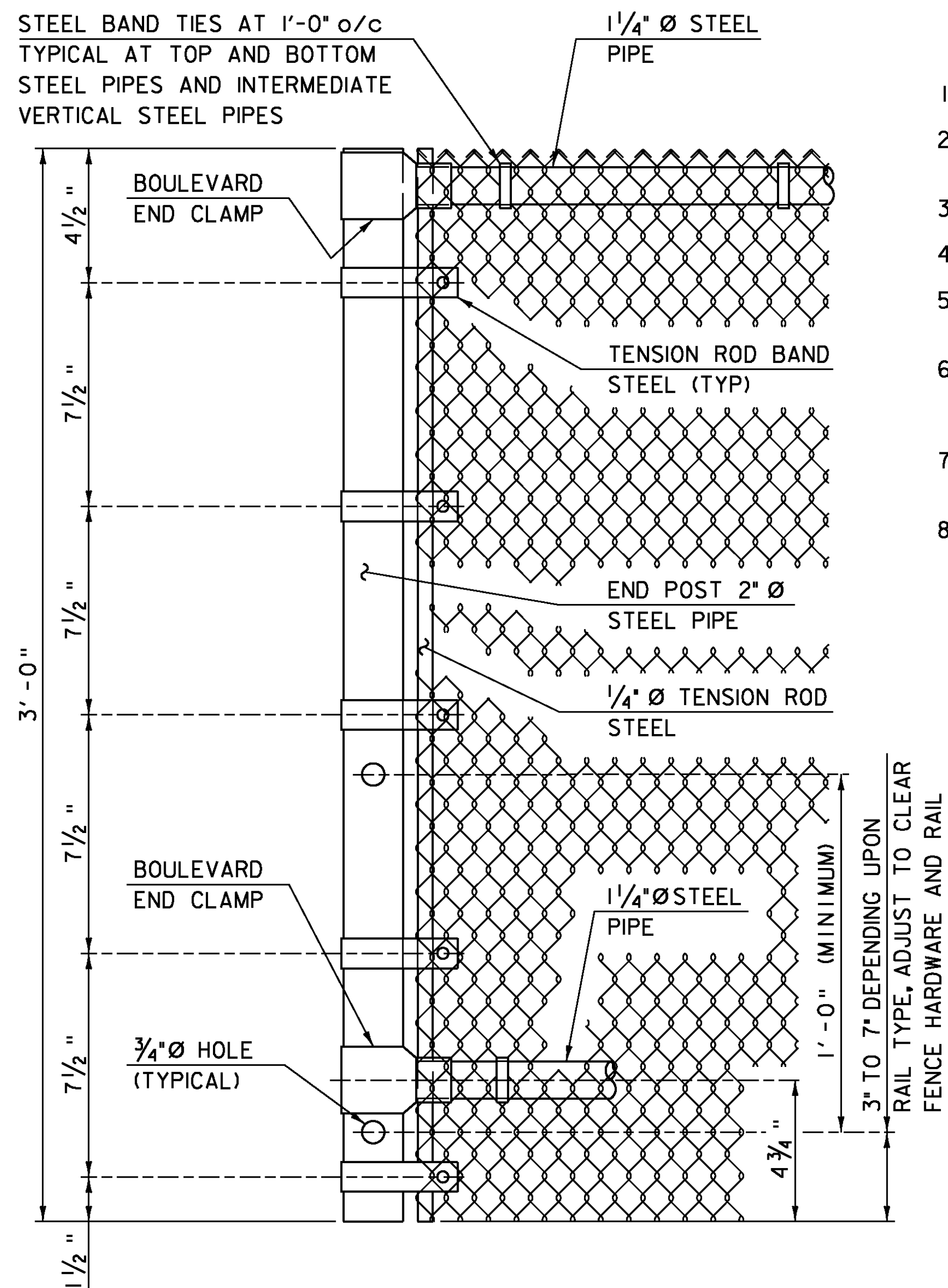
**SECTION A-A**



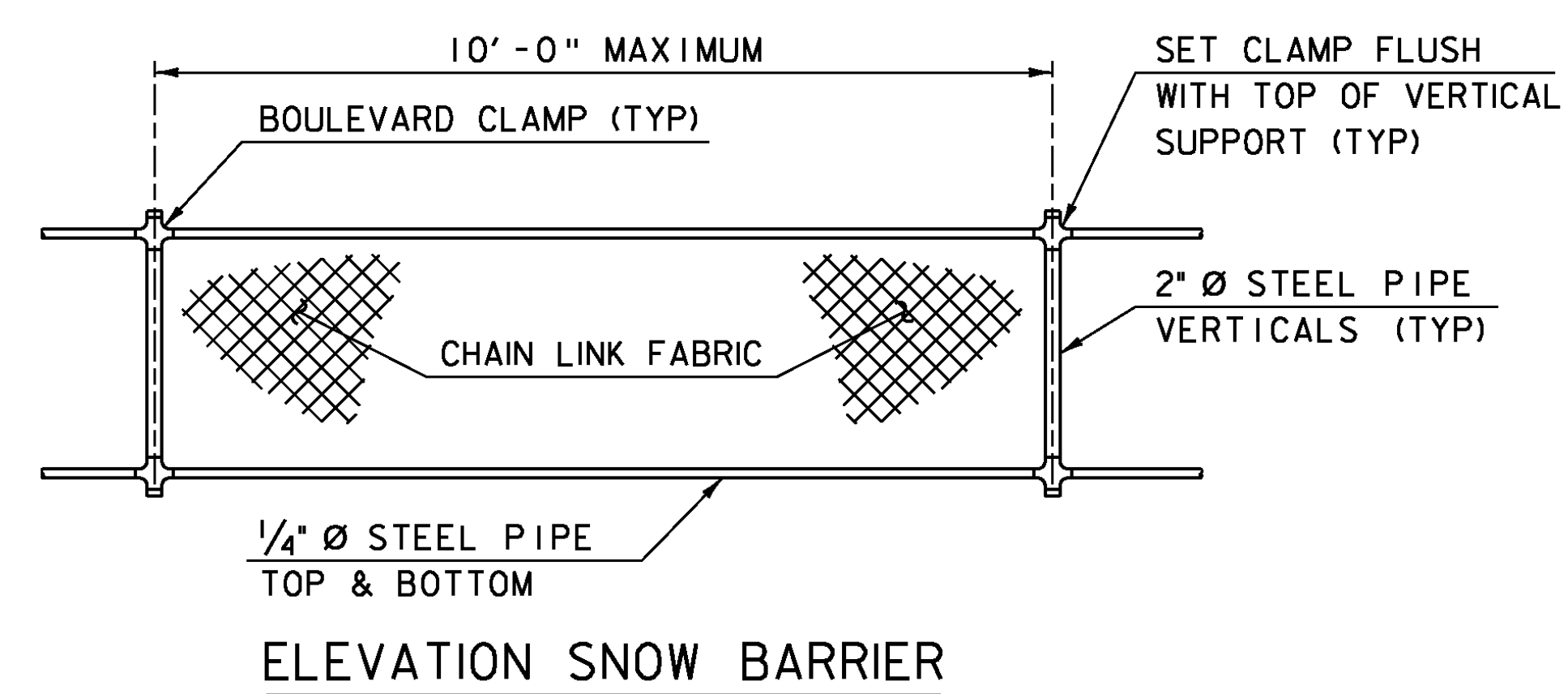
**TENSION ROD BAND**



**PLATE DETAIL**



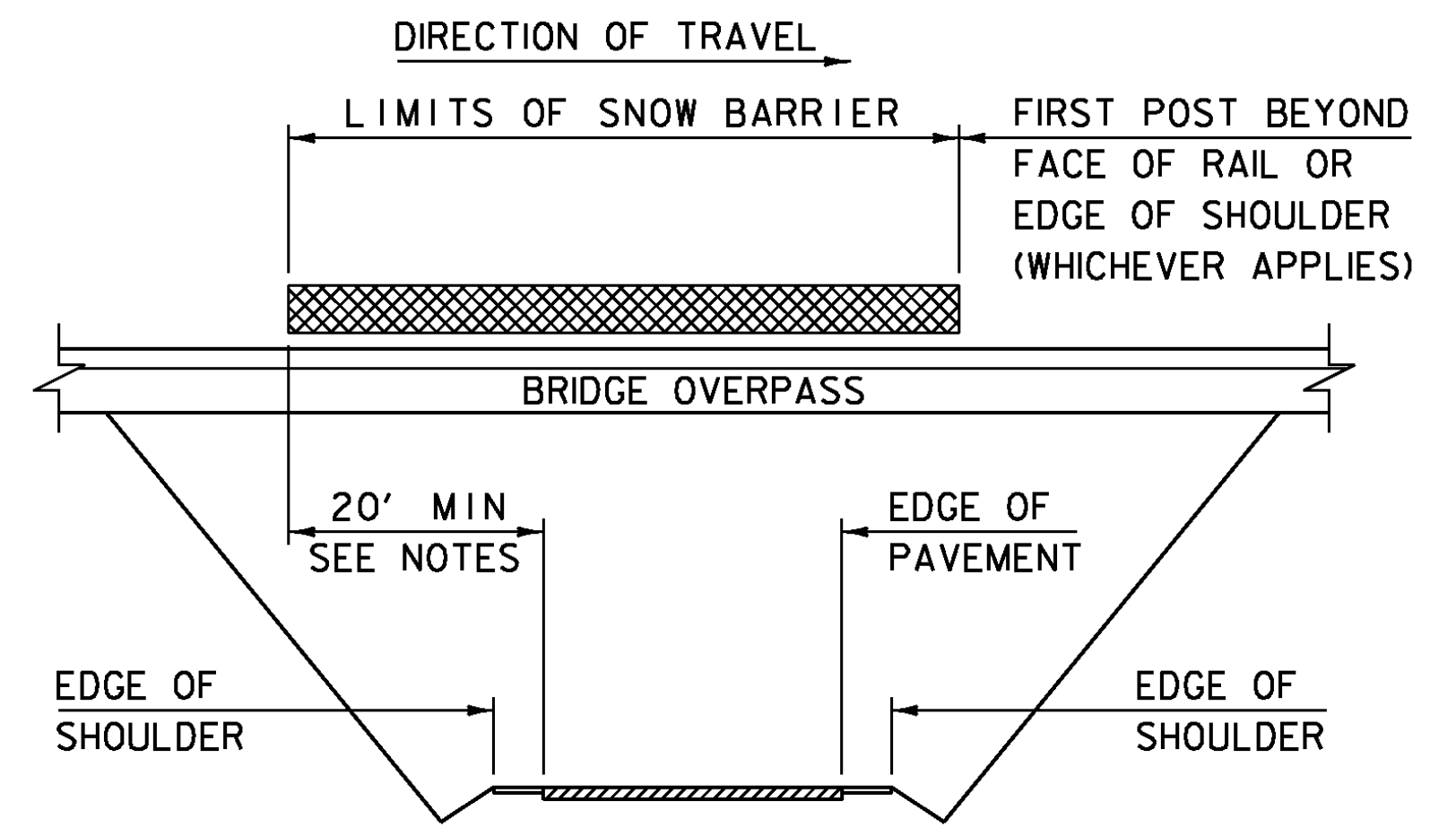
**END POST DETAILS**



**ELEVATION SNOW BARRIER**

**NOTES**

1. ALL WORK AND MATERIAL SHALL CONFORM TO SECTION 620.
2. SNOW BARRIER CAN BE USED WITH GALVANIZED 2,3, AND 4 RAIL BOX BEAM BRIDGE RAIL.
3. 1 1/4" PIPE LENGTH SHALL BE FIELD CUT TO FIT POST SPACING.
4. CHAIN LINK FABRIC TO BE KNUCKLED TOP AND BOTTOM.
5. ALL STEEL PLATES SHALL CONFORM TO AASHTO M270/M270M GRADE 36.
6. SNOW BARRIER SHALL BEGIN AT THE BRIDGE RAIL POST WHICH WILL PROVIDE A MINIMUM DISTANCE OF 20' (AS SHOWN) OR AS DIRECTED BY THE ENGINEER.
7. ALL REFERENCES TO THE DIAMETERS OF GALVANIZED STEEL PIPE SHALL REFER TO THE OUTSIDE DIAMETER (O.D.).
8. HARDWARE FOR THE CONNECTION OF THE SNOW BARRIER SHALL BE HOT-DIP GALVANIZED OR MECHANICALLY GALVANIZED USING A MECHANICALLY DEPOSITED PROCESS CONFORMING TO THE REQUIREMENTS OF AASHTO M 298, CLASS 10.



**SCHEMATIC SNOW BARRIER LIMITS**

PROJECT NAME: HARLTAND	PLOT DATE: 1/3/2014
PROJECT NUMBER: BHF BPNT(12)	DRAWN BY: VTRANS
FILE NAME: zllc260snowbarrier.dgn	CHECKED BY: VTRANS
PROJECT LEADER: VTRANS	SHEET 36 OF 55
DESIGNED BY: VTRANS	
BR 62A SNOW BARRIER	