

MANUFACTURED TERMINAL SECTION, FLARED

STA. 11+24.76 - 11+62.26, LT
 STA. 10+37.50 - 10+75.00, LT

CAST-IN-PLACE CONCRETE CURB, TYPE B

STA. 11+29.84 - 11+69.84, LT
 STA. 13+01.16 - 13+41.06, LT
 STA. 11+63.84 - 12+03.84, RT
 STA. 13+41.91 - 13+81.91, RT

GUARDRAIL APPROACH SECTION, GALVANIZED 2 RAIL BOX BEAM

STA. 11+74.76 - 12+03.84, LT
 STA. 13+41.91 - 13+70.99, LT
 STA. 11+40.76 - 11+69.84, RT
 STA. 13+01.16 - 13+30.24, RT

REMOVAL AND DISPOSAL OF GUARDRAIL

STA. 11+03.26 - 11+83.80, RT
 STA. 11+34.00 - 12+12.80, LT
 STA. 12+88.70 - 13+93.99, RT
 STA. 13+14.73 - 13+95.99, LT

STEEL BEAM GUARDRAIL, GALVANIZED W/ 8 FEET POSTS

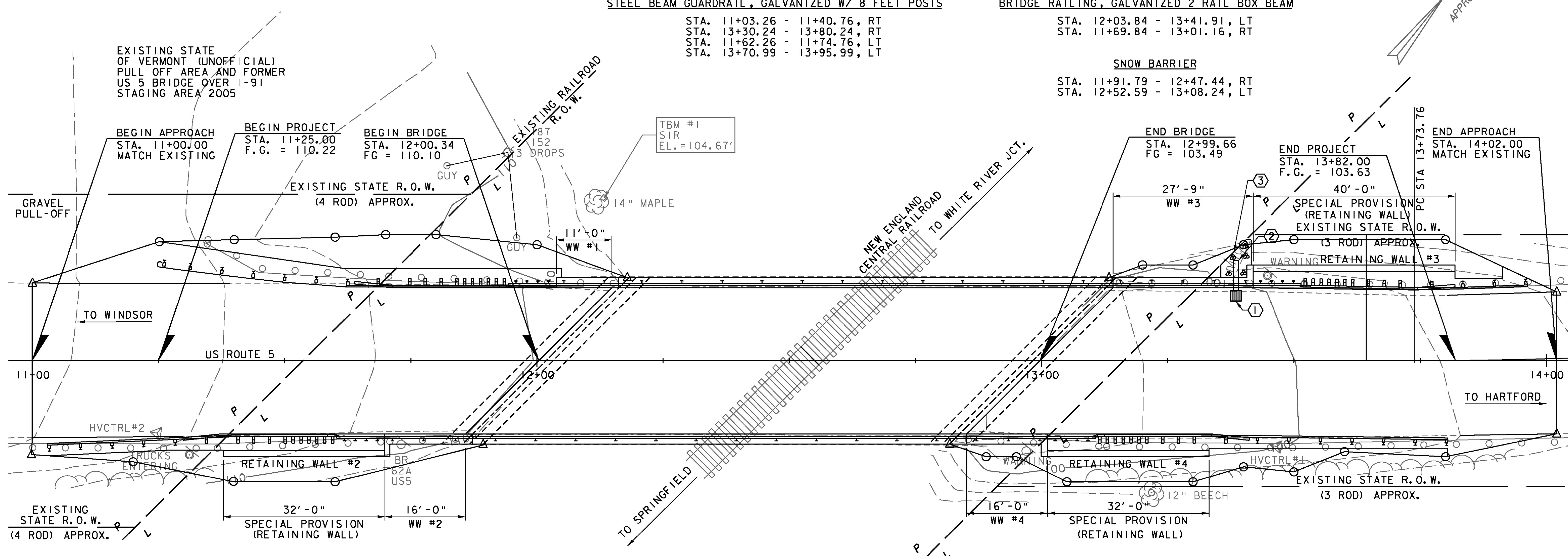
STA. 11+03.26 - 11+40.76, RT
 STA. 13+30.24 - 13+80.24, RT
 STA. 11+62.26 - 11+74.76, LT
 STA. 13+70.99 - 13+95.99, LT

BRIDGE RAILING, GALVANIZED 2 RAIL BOX BEAM

STA. 12+03.84 - 13+41.91, LT
 STA. 11+69.84 - 13+01.16, RT

SNOW BARRIER

STA. 11+91.79 - 12+47.44, RT
 STA. 12+52.59 - 13+08.24, LT



EXISTING BRIDGE 62A

SINGLE SPAN
 ROLLED BEAM
 CONCRETE DECK
 99'-4" LENGTH
 29'-6" ROADWAY WIDTH
 22'-2" VERTICAL CLEARANCE TO RAILROAD RAIL
 BUILT 1955

DRAINAGE

- ① STA. 13+38.5, LT 14.0'
 CONSTRUCT PRECAST REINFORCED CONCRETE
 DROP INLET WITH CAST IRON GRATE
 INV. @ INLET (14.0' LT) = 96.75'
- ② STA 13+38.50, LT 19.86'
 CONSTRUCT 6 LF x 12" CPEP
 12" INV. @ INLET (15.5' LT) = 96.34'
 12" INV. @ OUTLET (21.3' LT) = 94.69'
- ③ STA 13+38.50, LT 16.5' TO LT 24.0'
 STONE FILL, TYPE 1, 1.5' x 6'

NOTE:

- 1. NEW STEEL BEAM GUARDRAIL IS TO BE ATTACHED TO EXISTING STEEL BEAM GUARDRAIL AT STATIONS 11+03.26 RT, 13+80.24 RT AND 13+95.99 LT.

PROJECT NAME: HARTLAND
 PROJECT NUMBER: BHF BPNT(12)

FILE NAME: zllc260bdr_nul.dgn
 PROJECT LEADER: M.A. COLGAN
 DESIGNED BY: S.G. FARNSWORTH
 BR 62A LAYOUT SHEET

PLOT DATE: 1/2/2014
 DRAWN BY: M.C. SCOTT
 CHECKED BY: S.E. BURBANK
 SHEET 12 OF 55

