

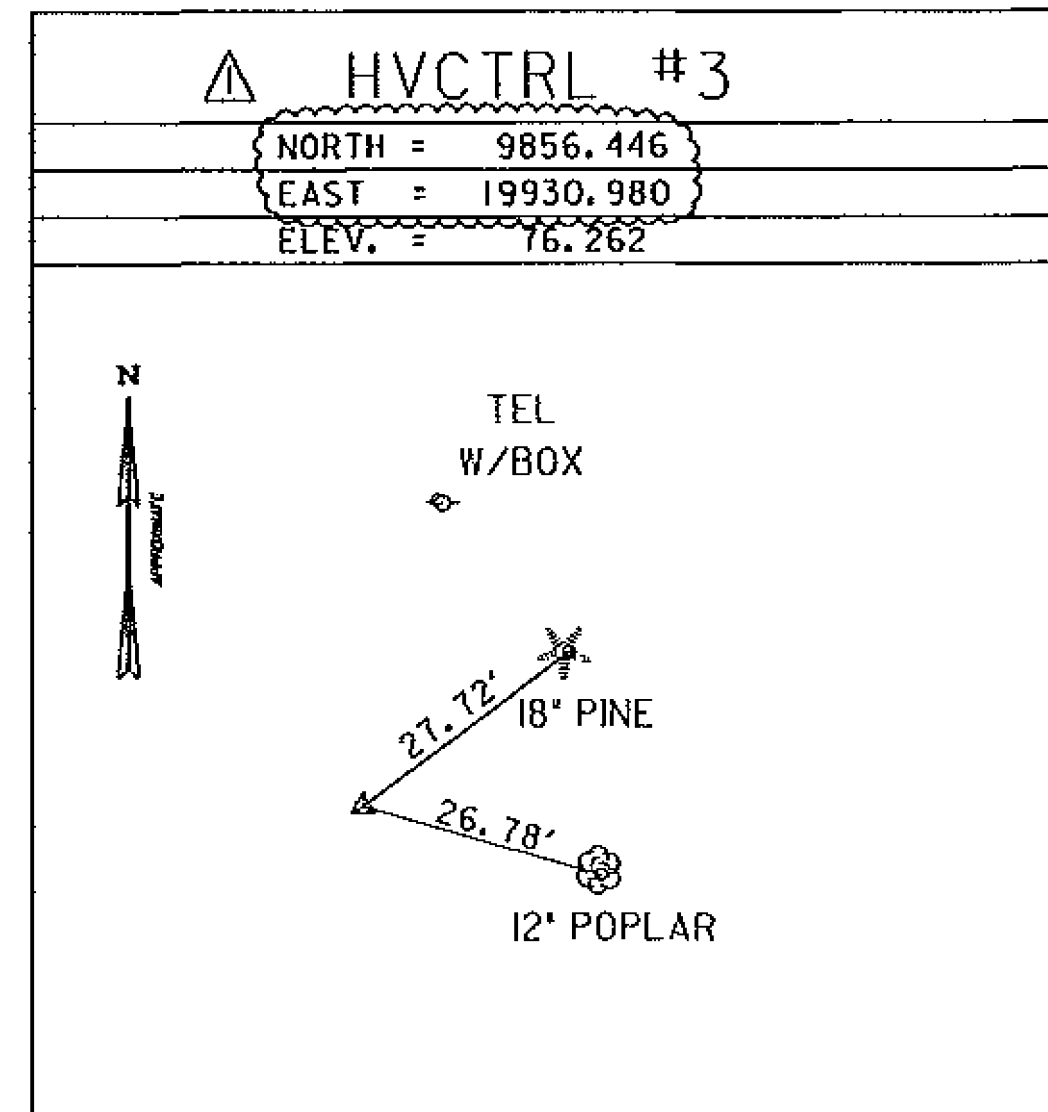
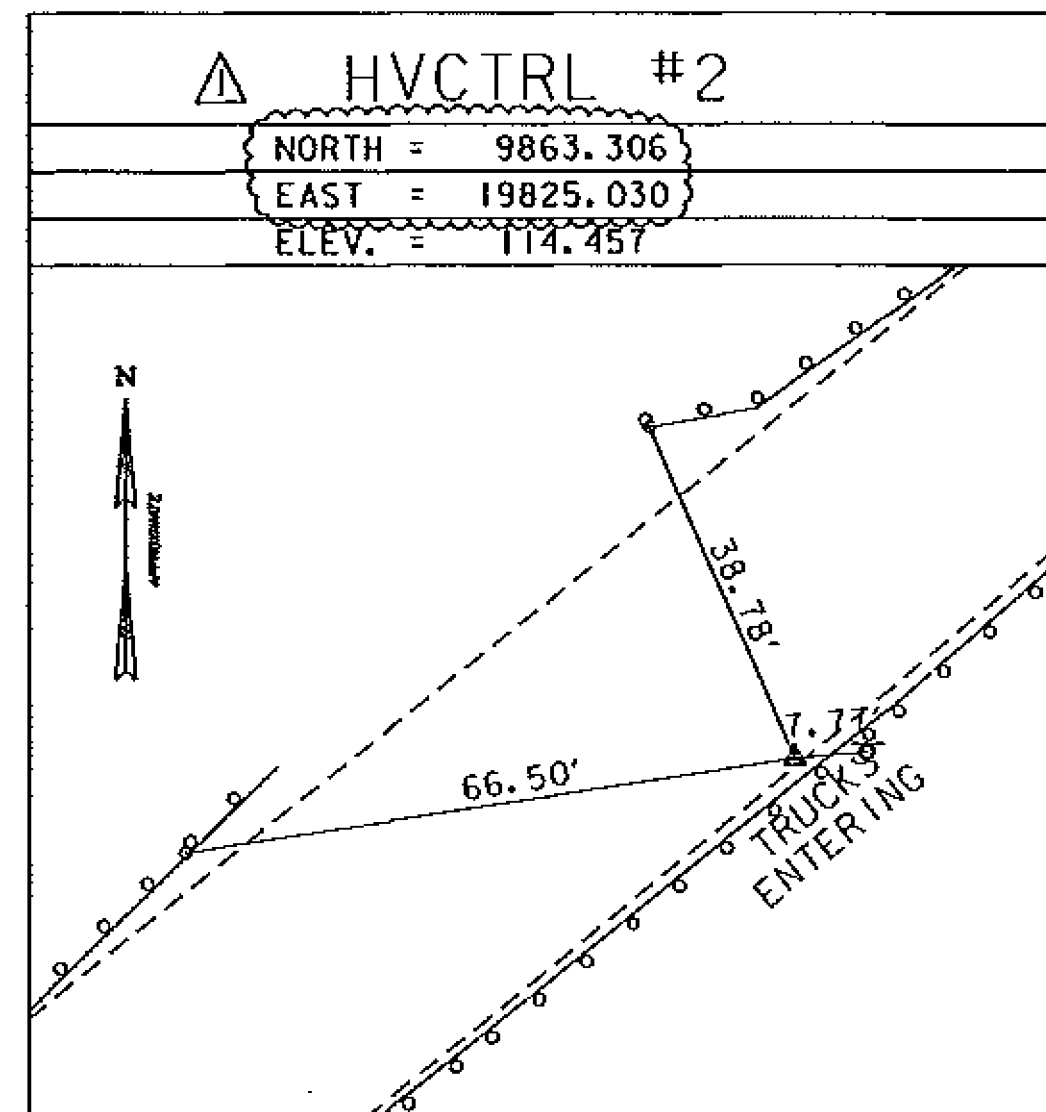
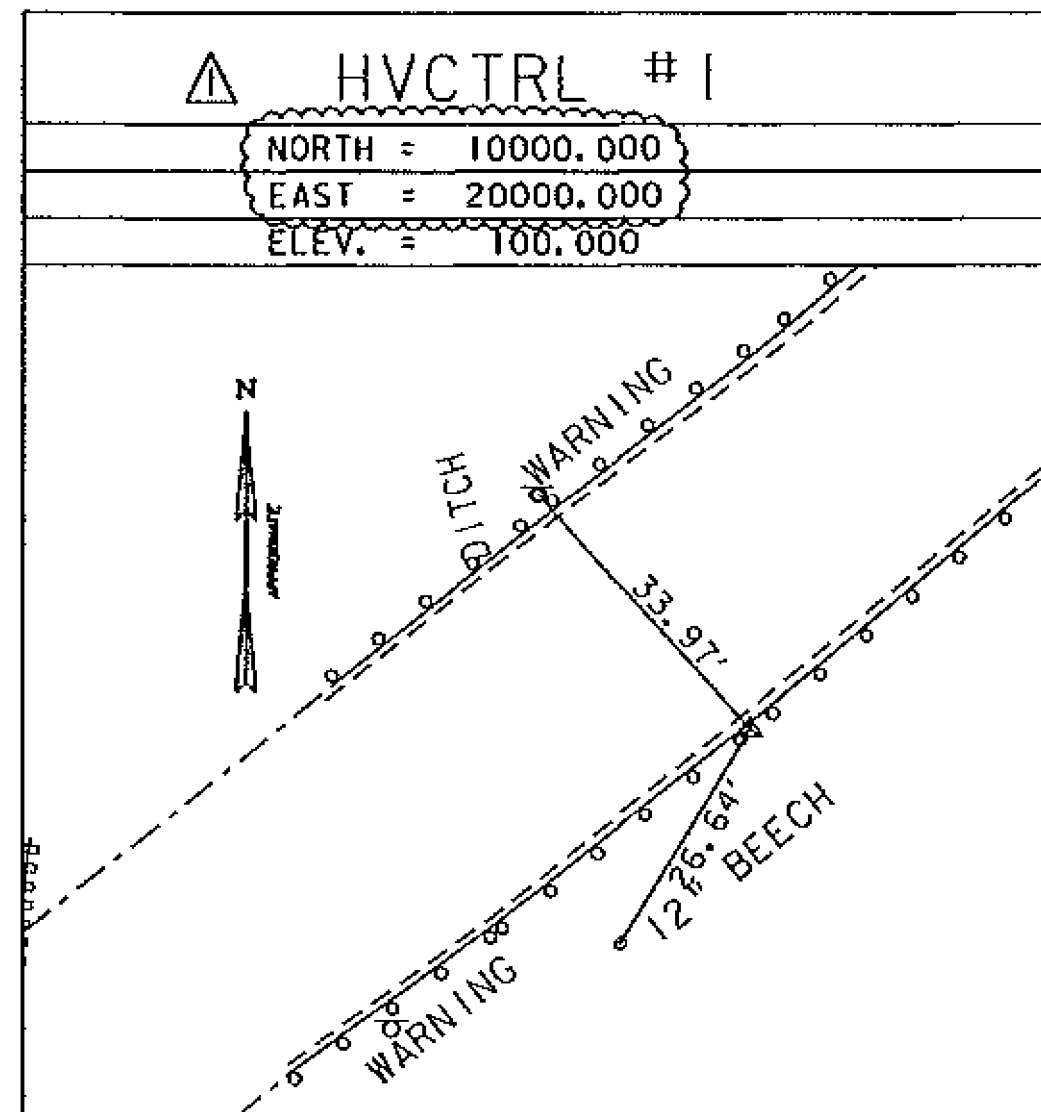
GPS CONTROL POINTS

△ HVCTRL #1
 NORTH = 10000.00
 EAST = 20000.00
 ELEV. = 100.00
 STA. 13+46.76, 16.97 RT

△ HVCTRL #2
 NORTH = 9863.306
 EAST = 19825.030
 ELEV. = 114.457
 STA. 11+24.74, 14.31 RT

△ HVCTRL #3
 NORTH = 9856.446
 EAST = 19930.980
 ELEV. = 76.262
 STA. 12+03.16, 85.89 RT

TRAVERSE TIES



| | |
|------------|---------|
| DATUM | |
| VERTICAL | ASSUMED |
| HORIZONTAL | ASSUMED |
| ADJUSTMENT | COMPASS |

| REV. | DESCRIPTION | DATE |
|------------------------------|---|-----------|
| △ | CORRECTED COORDINATES & ADDED STATIONS WITH OFFSETS | 2/12/2014 |
| PROJECT NAME: HARTLAND | | |
| PROJECT NUMBER: BHF BPNT(12) | | |
| FILE NAME: zllc2601.dgn | PLOT DATE: 2/12/2014 | |
| PROJECT LEADER: M.A. COLGAN | DRAWN BY: A.J. GOUDREAU | |
| DESIGNED BY: VHB | CHECKED BY: S. FARNSWORTH | |
| BR 62A TIE SHEET | SHEET 10 OF 55 | |

