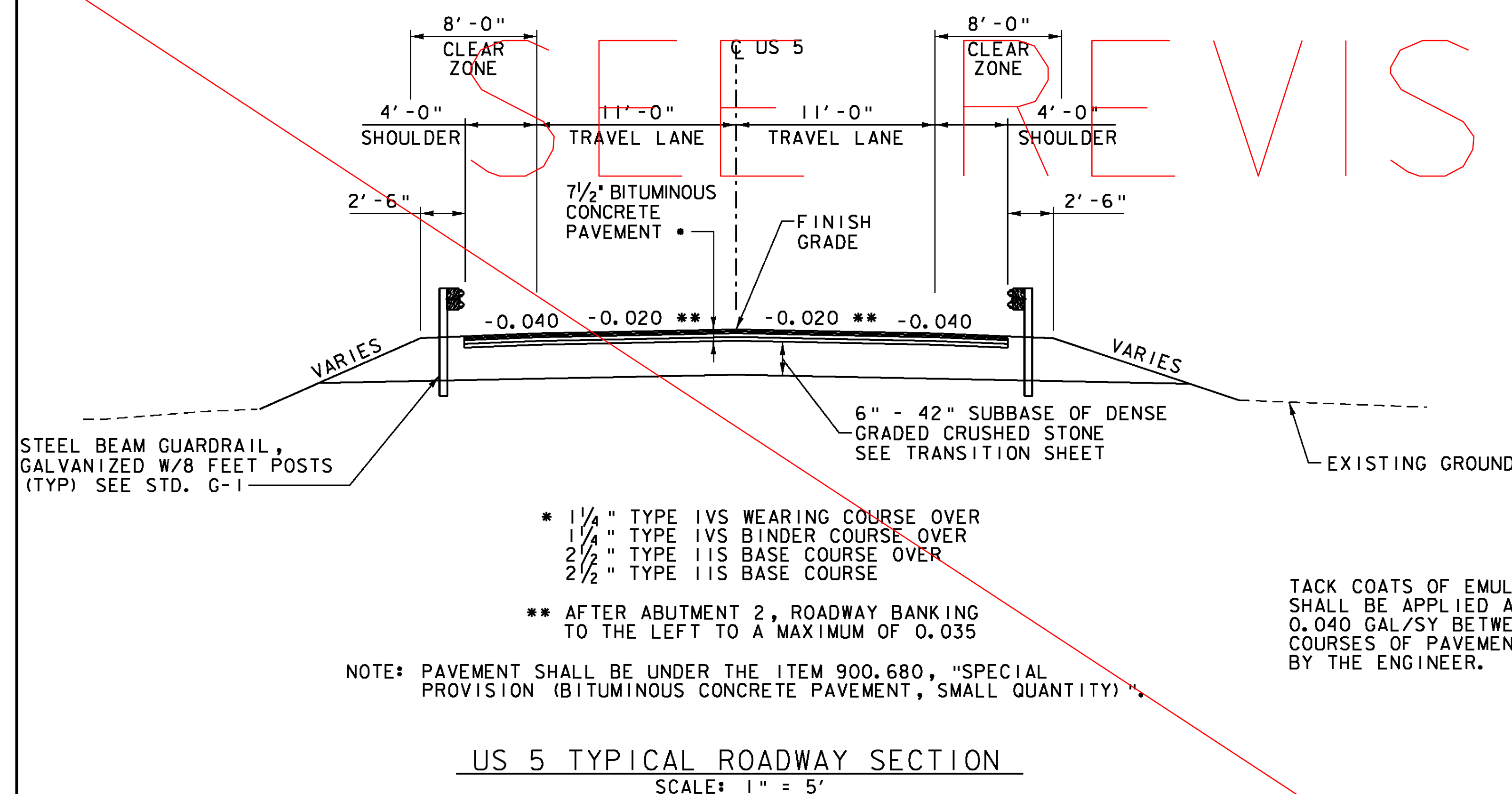
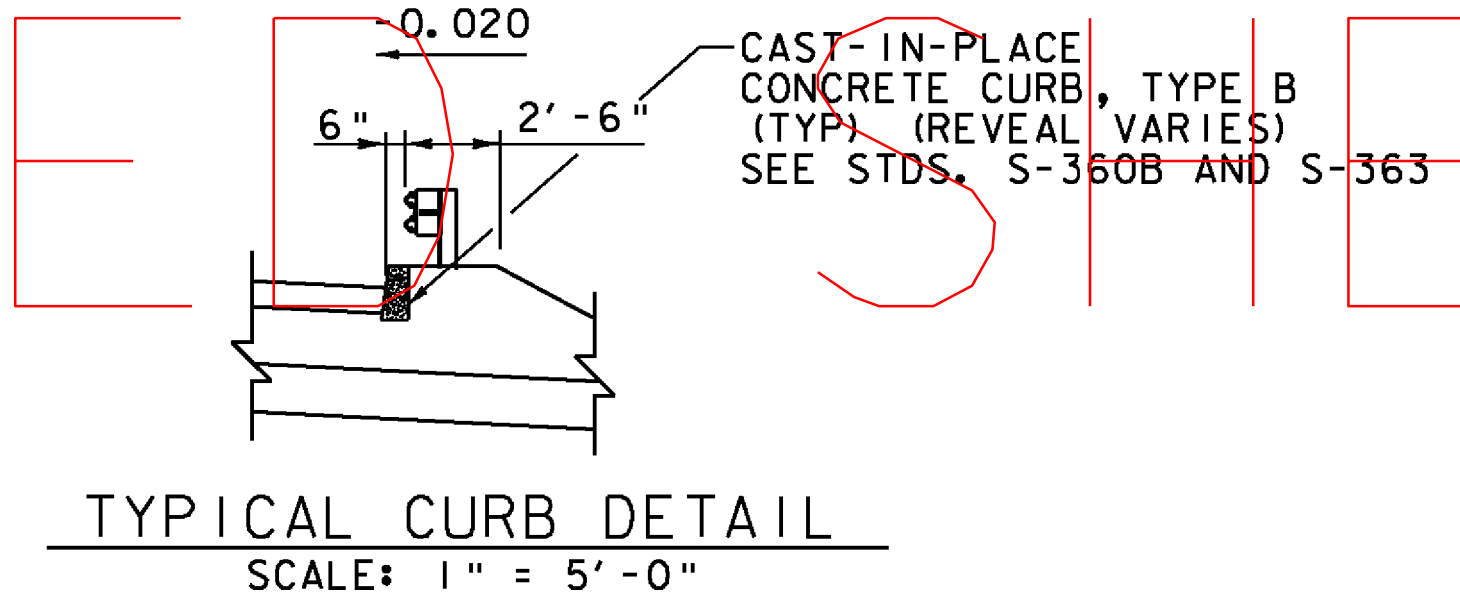


MATERIAL TOLERANCES
(IF USED ON PROJECT)

	TOTAL DEPTH FOR EACH MATERIAL
SURFACE - PAVEMENT	+/- 1/4"
- AGGREGATE SURFACE COURSE	+/- 1/2"
BASE COURSE	+/- 1/2"
SUBBASE	+/- 1"
SAND BORROW	+/- 1"
GRANULAR BORROW	+/- 1"

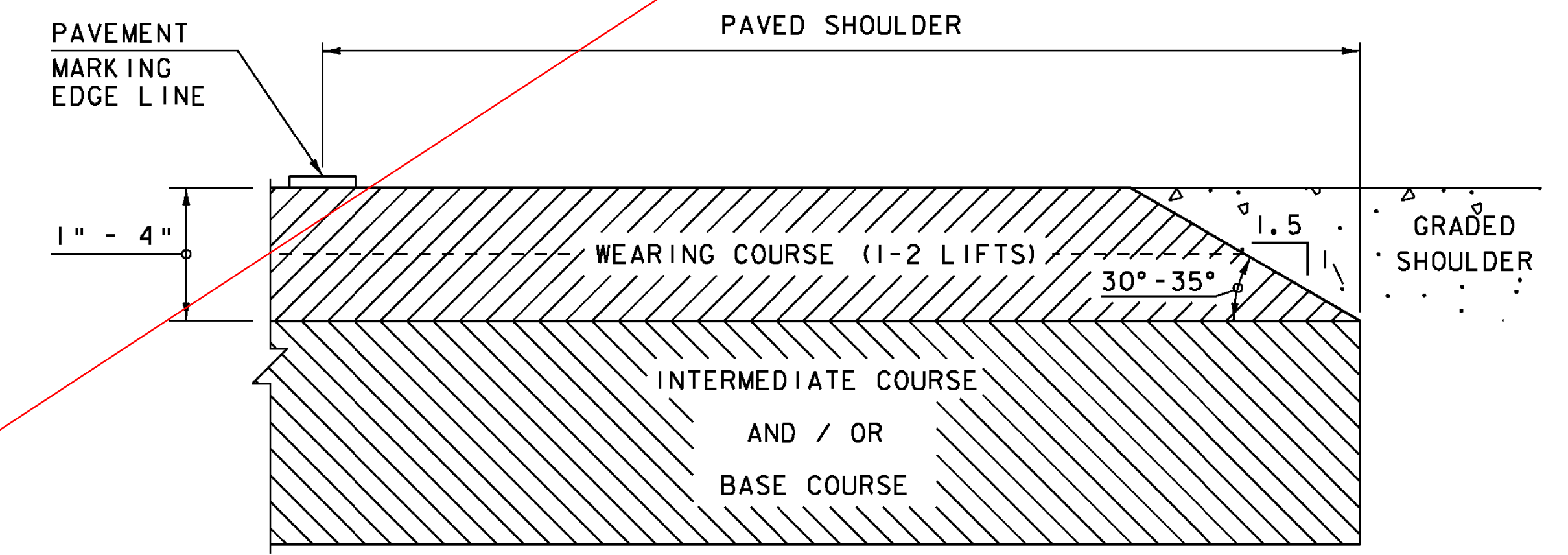


- * 1 1/4" TYPE IVS WEARING COURSE OVER
- 1 1/4" TYPE IVS BINDER COURSE OVER
- 2 1/2" TYPE IIS BASE COURSE OVER
- 2 1/2" TYPE IIS BASE COURSE

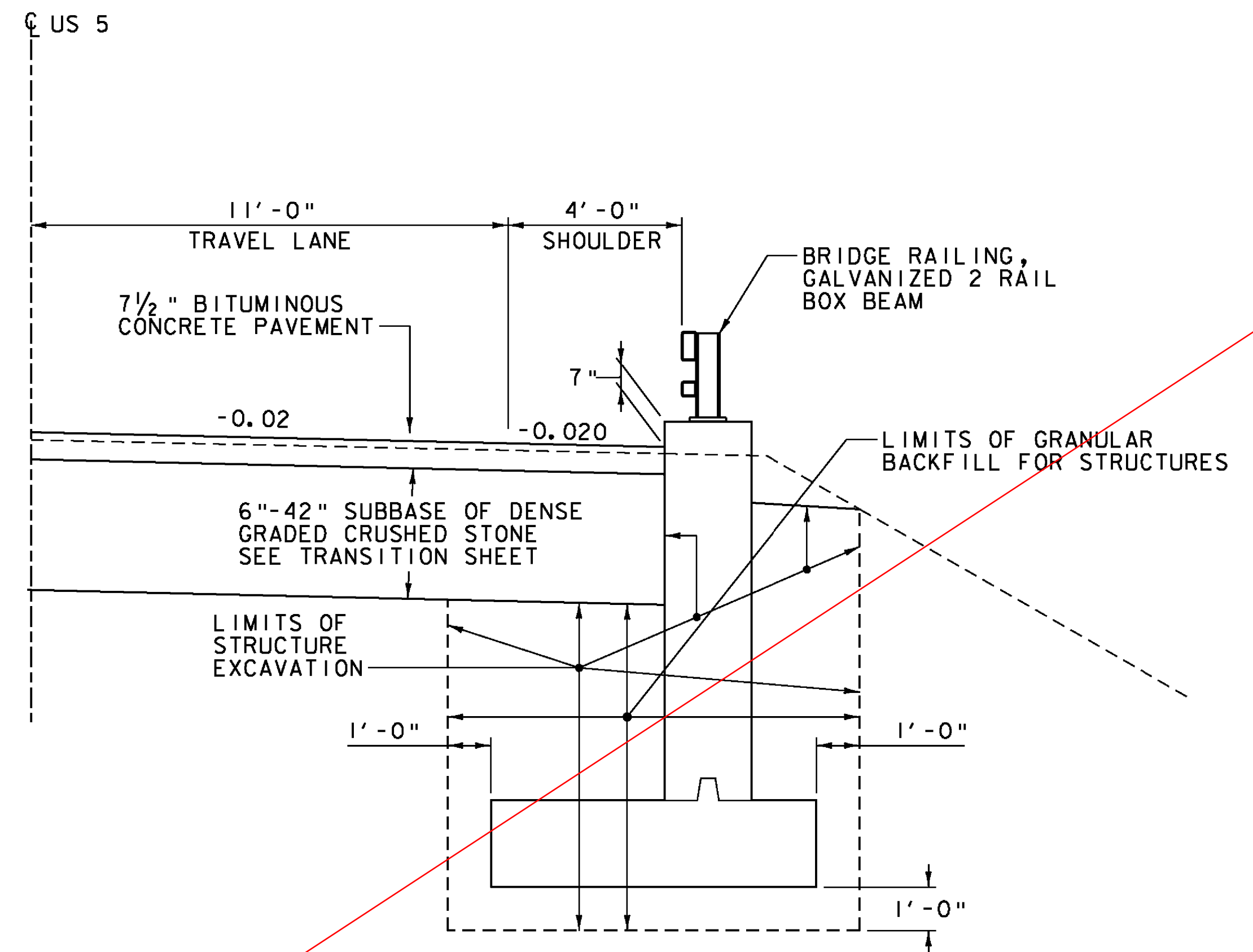
** AFTER ABUTMENT 2, ROADWAY BANKING TO THE LEFT TO A MAXIMUM OF 0.035

NOTE: PAVEMENT SHALL BE UNDER THE ITEM 900.680, "SPECIAL PROVISION (BITUMINOUS CONCRETE PAVEMENT, SMALL QUANTITY)".

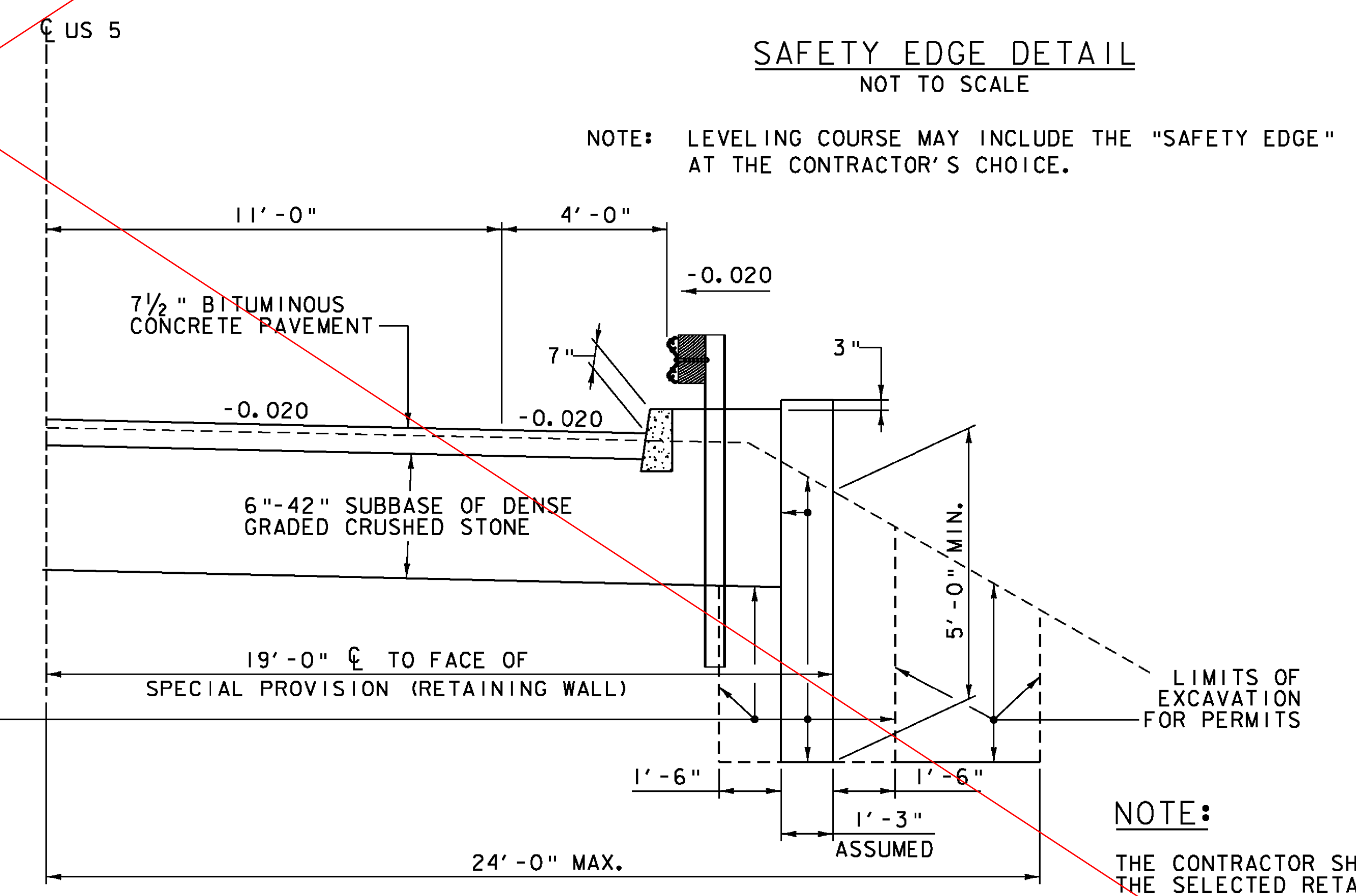
TACK COATS OF EMULSIFIED ASPHALT SHALL BE APPLIED AT THE RATE OF 0.040 GAL/SY BETWEEN SUCCESSIVE COURSES OF PAVEMENT OR AS DIRECTED BY THE ENGINEER.



NOTE: LEVELING COURSE MAY INCLUDE THE "SAFETY EDGE" AT THE CONTRACTOR'S CHOICE.



EXCAVATION AND BACKFILL PAID FOR UNDER ITEM 900.670, "SPECIAL PROVISION (RETAINING WALL)"



NOTE: THE CONTRACTOR SHALL ENSURE THAT THE SELECTED RETAINING WALL SYSTEM DOES NOT CONFLICT WITH THE GUARDRAIL INSTALLATION.

PROJECT NAME: HARTLAND	PROJECT NUMBER: BHF BPNT(12)
FILE NAME: zllc2601yp.dgn	PLOT DATE: 1/2/2014
PROJECT LEADER: M.A. COLGAN	DRAWN BY: A.J. GOUDREAU
DESIGNED BY: S.G. FARNSWORTH	CHECKED BY: S.G. FARNSWORTH
BR 62A TYPICAL ROADWAY SECTIONS	SHEET 4 OF 55

