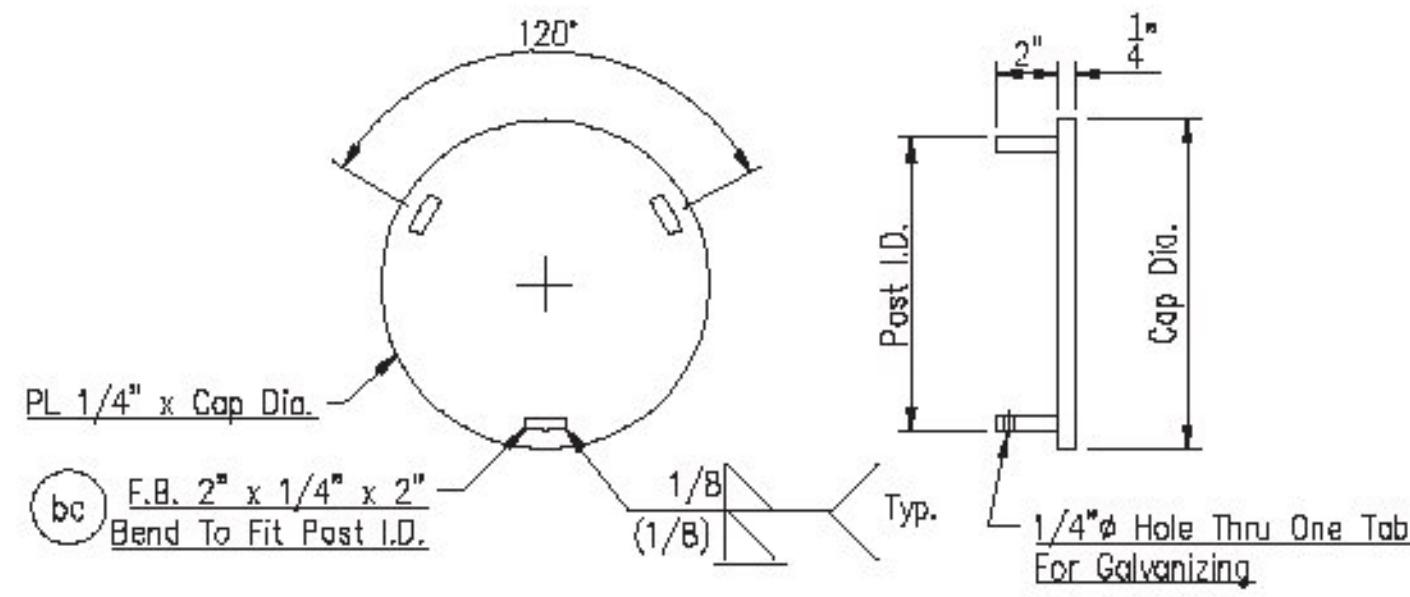


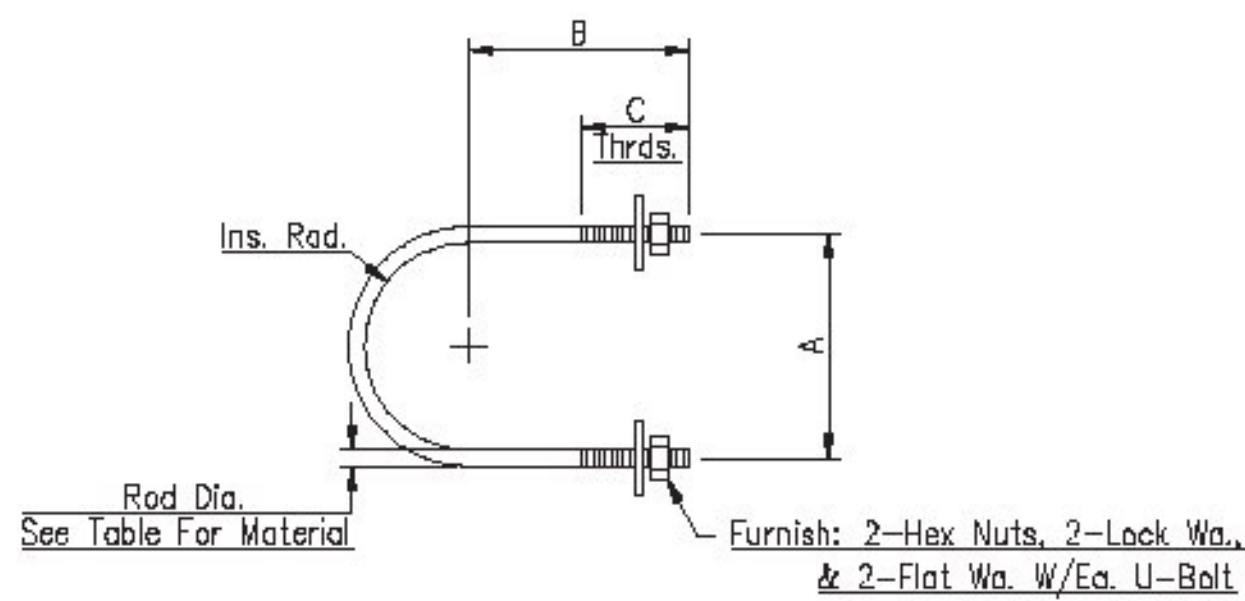
Sign Support Detail

Qty.	Mk.	Length	A	B	C	D
4	S1	10'-6"	2'-11 7/8"	3'-6 1/8"	6'-11 7/8"	7'-6 1/8"
5	S2	6'-6"	11 7/8"	1'-6 1/8"	4'-11 7/8"	5'-6 1/8"
3	S3	15'-0"	5'-2 7/8"	5'-9 1/8"	9'-2 7/8"	9'-9 1/8"
3	S4	12'-6"	3'-11 7/8"	4'-6 1/8"	7'-11 7/8"	8'-6 1/8"



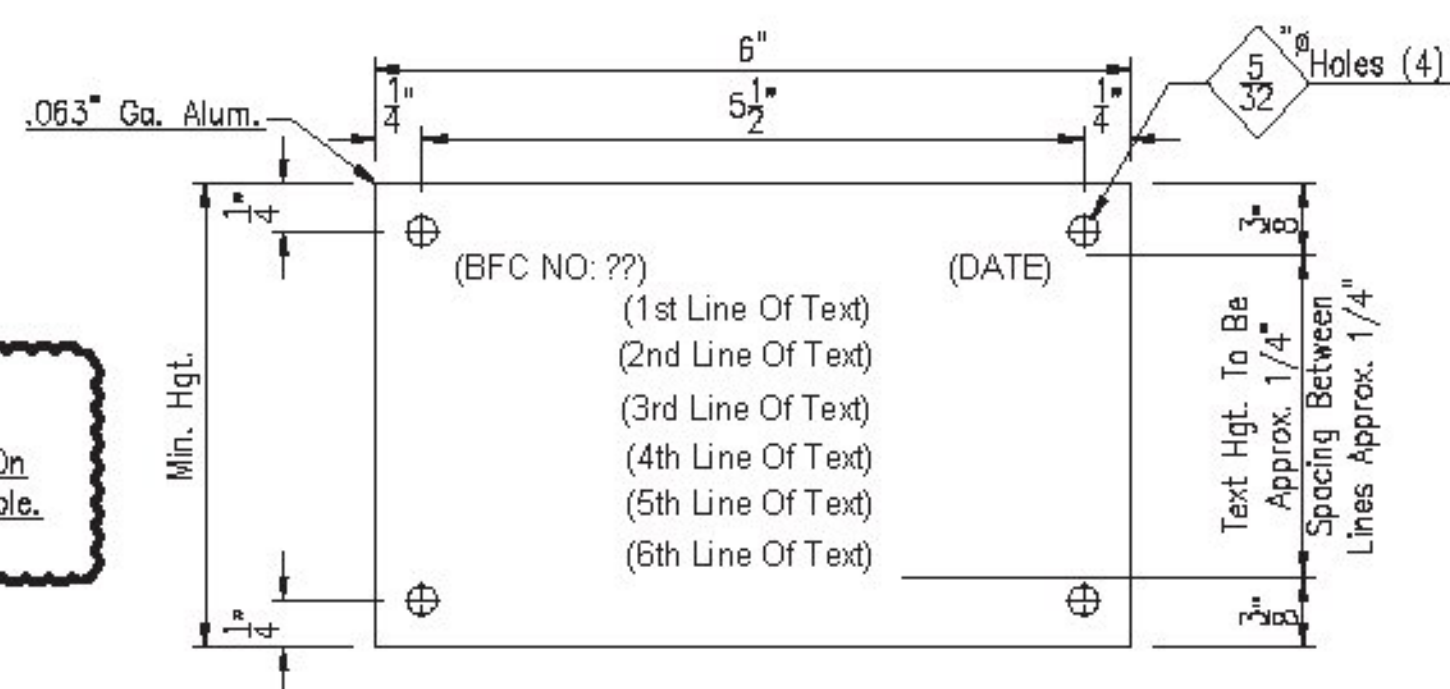
End Cap Detail

Qty.	Mk.	Cap Dia. (Post O.D.)	Post I.D.	Structure
4	EC1	12 3/4"	12"	E1 & E2



U-Bolt Detail

Qty.	Mk	Rod Dia.	Length	A	B	C	Inside Radius	Remarks
60	UB006	1/2"	1'-6 9/16"	6 1/4"	4 3/8"	2"	2 7/8"	Sign Support To 5.563" O.D. Chord
16	UB055	3/4"	1'-8 11/16"	6 1/2"	5 1/4"	2 1/2"	2 7/8"	5.563" O.D. Chord To Endframe



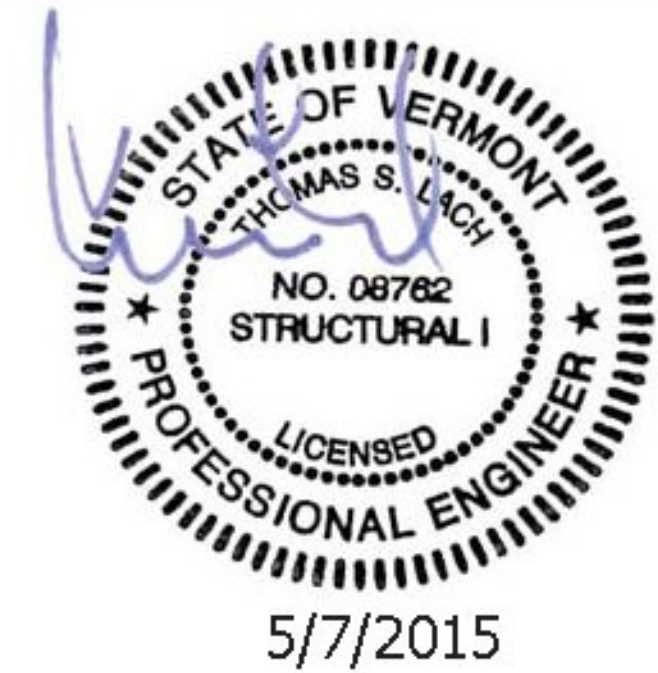
Note:
Strip To Install On
Column Near Handhole.

Note:
For Date Use Month And Year The Tag Is Manufactured.
Example (8/07)

Qty.	Height	BFC No.	Date	1st Line Of Text	2nd Line Of Text	3rd Line Of Text	4th Line Of Text	5th Line Of Text	6th Line Of Text
1	3"	VT-13675	▲	LT. Col. = 12.75" O.D. x .375 W. Pipe x 32'-2 7/8"	Vert. Pipe 55 KSI Min. Yield/Brace Pipe 42 KSI Min. Yield	RT. Col. = 12.75" O.D. x .375 W. Pipe x 27'-3 3/8"	Vert. Pipe 55 KSI Min. Yield/Brace Pipe 42 KSI Min. Yield	Chord ~ 5.563" O.D. x .258 W. Pipe x 105'-6" 55 KSI Min. Yield	Truss Brace Angle 36 KSI Min. Yield

Bill Of Materials

Qty.	Mk	Description	Length	Remarks	Inventory No.
4	S1	W6 x 9#	10'-6"		W6X9E
5	S2	do	6'-6"		W6X9E
3	S3	do	15'-0"		W6X9E
3	S4	do	12'-6"		W6X9E
4	EC1	PL 1/4" x 1'-0 3/4" Dia.	-		CIRCLE-12.75X.25A
12	bc	F.B. 2" x 1/4"	0'-2"		ENDCAP-TAB-2X2X.25A
12	ECB	5/16" S.S. Rd Hd Set Screws	3/4"		BSS0.312.75RH
60	UB006	1/2" Galv. Rod	1'-6 9/16"		RD.5A
120	-	1/2" Galv. Hex Nuts	-		NSGD42
120	-	1/2" Galv. Lock Washers	-		LWSG042
120	-	1/2" Galv. Flat Washers	-		WSG042
16	UB055	3/4" Galv. Rod	1'-8 11/16"		RD.75A
32	-	3/4" Galv. Hex Nuts	-		NSG062
32	-	3/4" Galv. Lock Washers	-		LWSG062
32	-	3/4" Galv. Hard Flat Washers	-		WSG062
1	-	ID Tags	-	Purchased Item	VADOT-TAGS



MATERIAL SPECIFICATIONS:

Structural Steel Shapes, Plate, & Flat Bar Shall To Be A.S.T.M. A709 Gr. 36
Galvanize All Steel After Fabrication Per A.S.T.M. A123
U-Bolts To Be A.S.T.M. A36
Nuts & Washers For U-Bolts To Be A.S.T.M. A307
Galvanize U-Bolts & Hardware Per A.S.T.M. A153

S.S. Screws: A.S.T.M. A320 (AISI 300 Series) Passivated.

PRINTS ISSUED				REVISIONS				
FOR	NO.	DATE	FOR	NO.	DATE	NO.	DATE	DESCRIPTION

Brookfield Fabricating Corp
P.O. Box 406- Brookfield, Missouri 64628- (660)258-2214

Customer: Lafayette Highway Specialties P.O. No: 29510

Project: Project No: STPG SGNL(40)
Washington County, Vermont

Description: Fabrication Details Of End Caps, U-Bolts & Misc. Hardware
Sta. 68+88.96, RT - Sta. 68+89.05, LT

Printed For: Vermont
Drawn By: JF
Date: 03/05/15
Checked By: CR JL
Date: 03/19/15
Job No: VT-13675
Rev.

Sheet No: 9 of 9