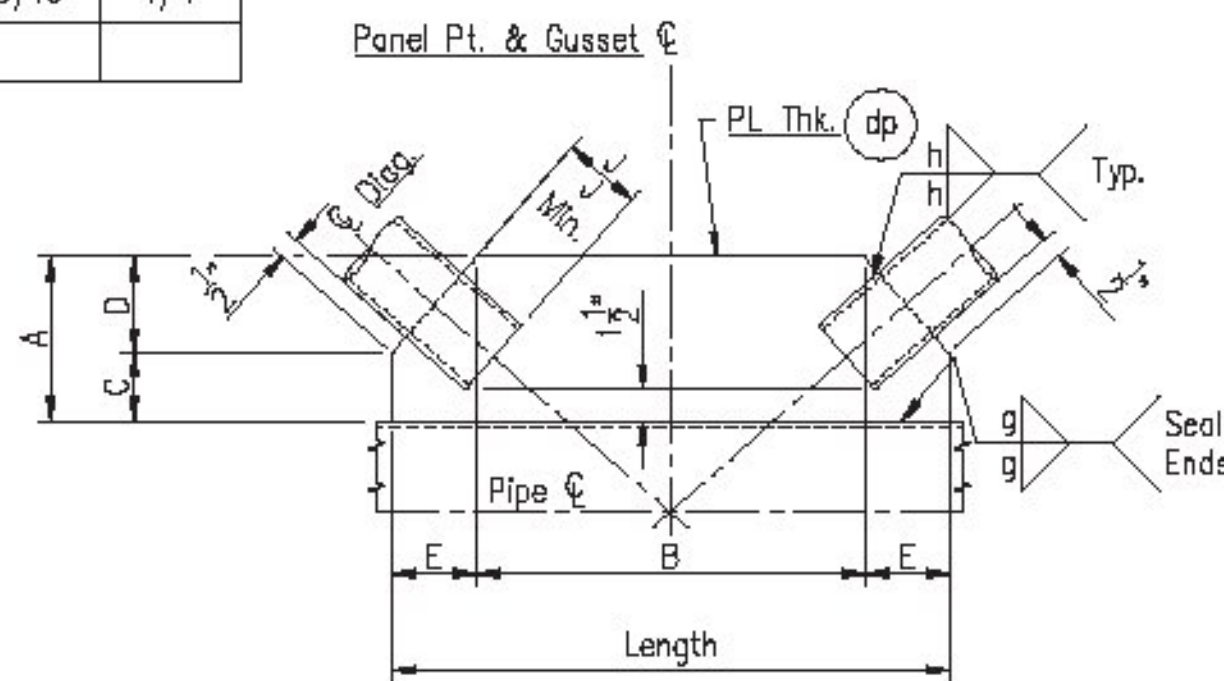


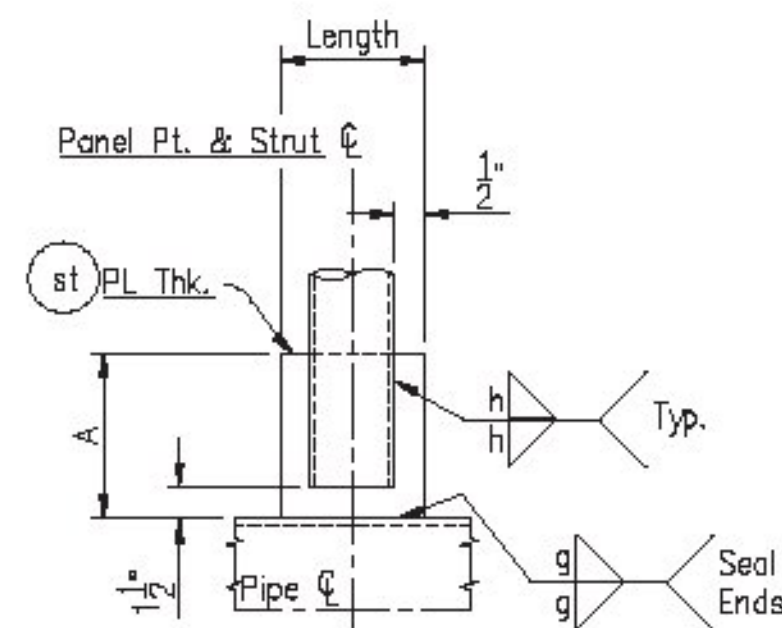
Diagonal & Strut Tab Plate Detail

Qty.	Mk.	Length	A	B	C	D	E	F	J	J Min.	PL Thk.	g	h
1	dt2	1'-4 3/8"	8"	1'-0 1/2"	4 3/16"	2 1/2"	3 7/8"	3 13/16"	4 1/4"	4"	1/2"	5/16	1/4
1	dt3	1'-5"	8"	1'-1 1/4"	4 1/16"	2 1/2"	3 3/4"	3 15/16"	4 1/4"	4"	1/2"	5/16	1/4



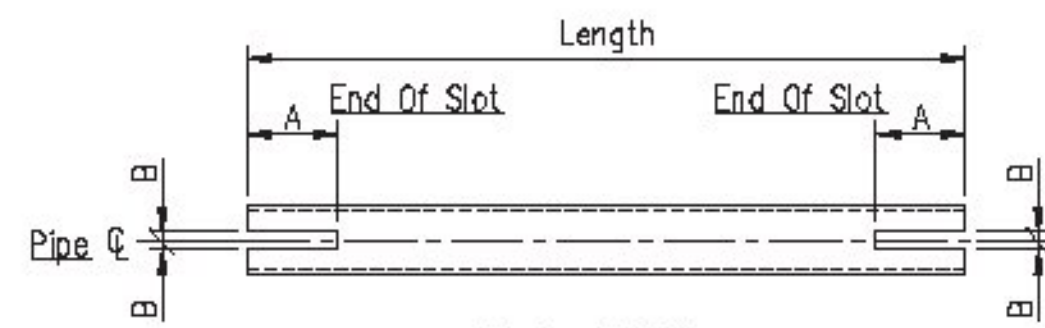
Diagonal Tab Plate Detail

Qty.	Mk.	Length	A	B	C	D	E	J	J Min.	PL Thk.	g	h
3	dp2	2'-3 11/16"	8"	1'-7 15/16"	4 3/16"	3 13/16"	3 7/8"	4 1/4"	4"	1/2"	5/16	1/4
2	dp3	2'-5"	8"	1'-9 1/2"	4 1/16"	3 15/16"	3 3/4"	4 1/4"	4"	1/2"	5/16	1/4



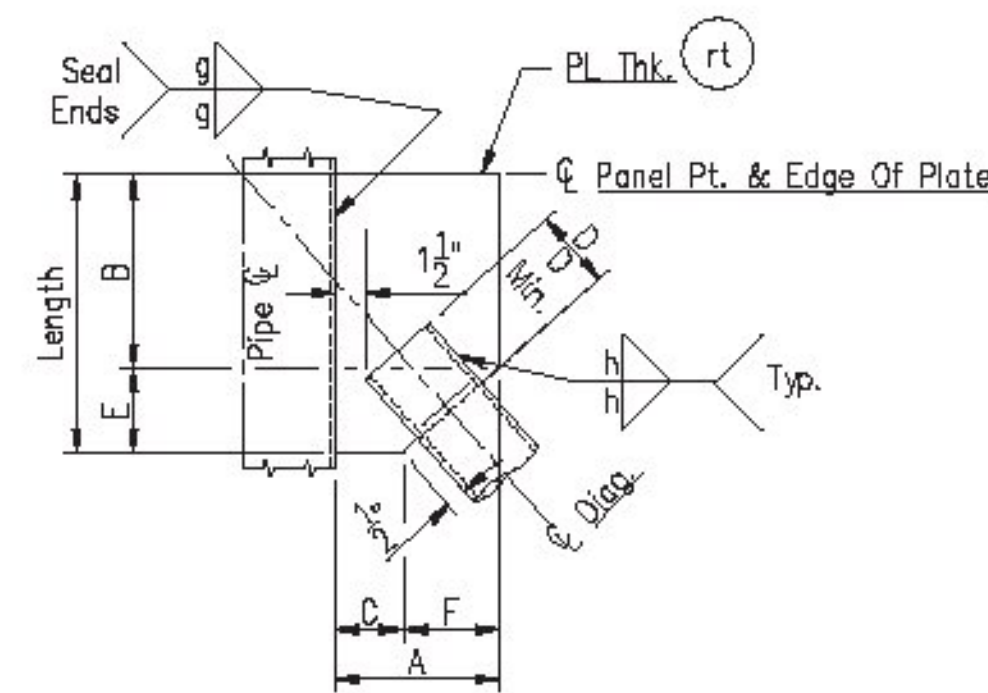
Interior Diagonal & Strut Tab Plate Detail

Qty.	Mk.	Length	A	PL Thk.	g	h
2	st2	5"	8"	1/2"	5/16	1/4



Bracing Detail

Qty.	Mk.	Length	A	B	Pipe Size
4	d2	6'-7 1/16"	4 1/4"	9/32"	4" O.D. x .226" W.
2	d3	4'-11 1/4"	6 1/2"	9/32"	do
3	d4	6'-9 3/8"	4 1/4"	9/32"	do



Diagonal & Tab Plate Detail

Qty.	Mk.	Length	A	B	C	D	D Min.	E	F	PL Thk.	g	h
1	rt1	1'-1 7/8"	8"	10"	4 3/16"	4 1/4"	4"	3 7/8"	3 13/16"	1/2"	5/16	1/4
1	rt2	1'-2 1/2"	8"	10 3/4"	4 1/16"	4 1/4"	4"	3 3/4"	3 15/16"	1/2"	5/16	1/4

### Bill Of Materials

Qty.	Mk	Description	Length	Remarks	Inventory No.
4	d2	4" O.D. x .226" W.	6'-7 1/16"		P4X.226H
2	d3	do	4'-11 1/4"		P4X.226H
3	d4	do	6'-9 3/8"		P4X.226H
1	dt2	PL 1/2" x 8"	1'-4 3/8"		PL.5Z
1	dt3	do	1'-5"		PL.5Z
3	dp2	do	2'-3 11/16"		PL.5Z
2	dp3	do	2'-5"		PL.5Z
1	rt1	do	1'-1 7/8"		PL.5Z
1	rt2	do	1'-2 1/2"		PL.5Z
2	st2	do	0'-5"		PL.5Z



**MATERIAL SPECIFICATIONS:**

Steel Pipe To Have 42 KSI Min Yield & To Be:

API 5L X42 Gr.

API 5L X52 Gr.

A500 Gr. B Or C

Steel Plate & Flat Bar Shall Be A.S.T.M. A709, Gr. 36

All Steel To Be Galvanized Per A.S.T.M. A123

Welding Note: All Design Details, Workmanship, Procedures And Inspection Shall Conform With Subsection 506.10

PRINTS ISSUED				REVISIONS				
FOR	NO.	DATE	FOR	NO.	DATE	NO.	DATE	DESCRIPTION

**Brookfield Fabricating Corp**  
 P.O. Box 406- Brookfield, Missouri 64628- (660)258-2214

Customer: Lafayette Highway Specialties P.O. No: 29510

Project: Project No: STPG SGNL(40)  
Washington County, Vermont

Description: Fabrication Details Of Tab Plates & Diagonals For Endframes  
Sta. 68+88.96, RT - Sta. 68+89.05, LT

Printed For: Vermont  
 Drawn By: JF  
 Date: 03/05/15  
 Checked By: CR - JL  
 Date: 03/19/15  
 Job No: VT-13675  
 Rev: 8 of 9