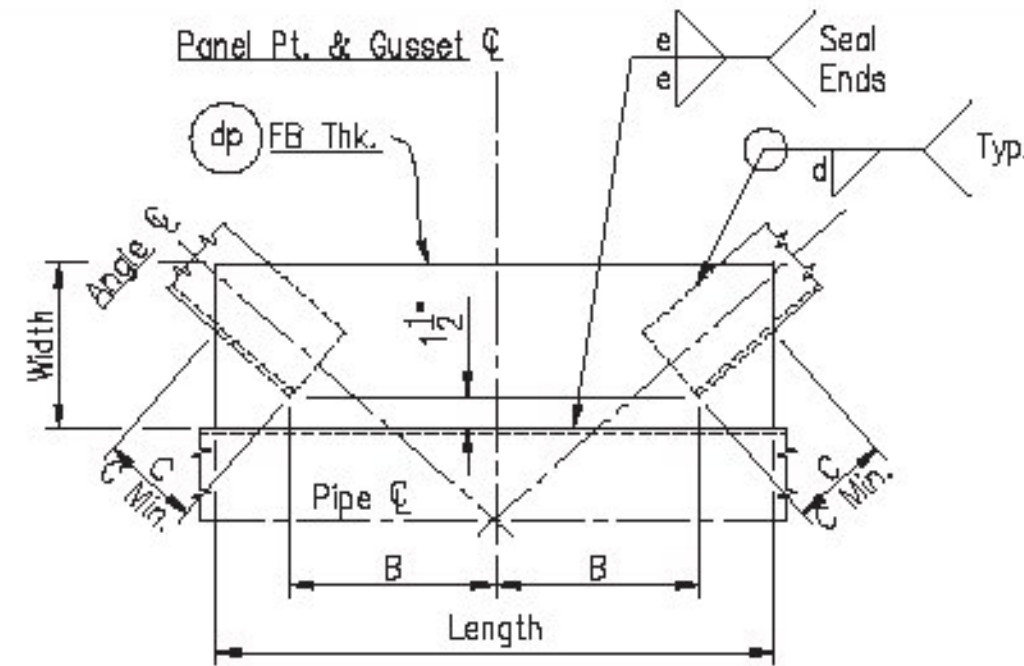


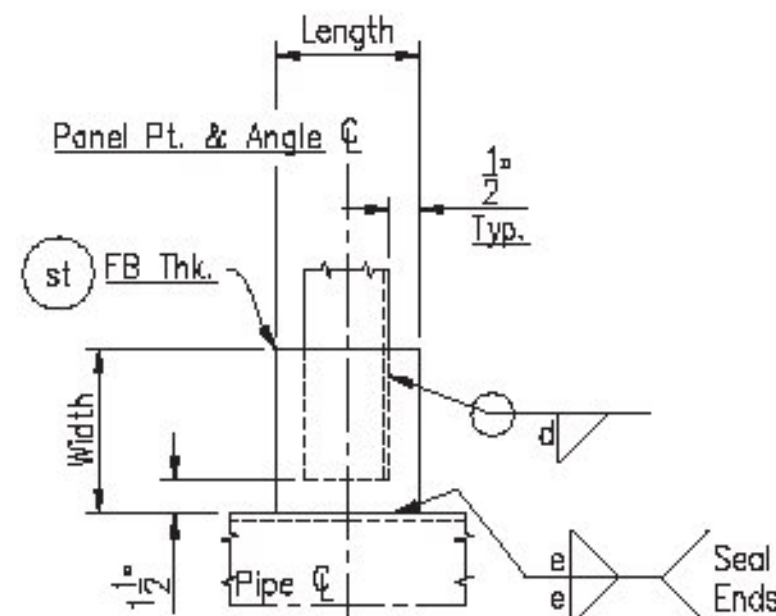
Diagonal & Tab Plate Detail

Qty.	Mk.	Length	Width	A	B	C	"C" Min.	FB Thk.	d	e
24	dt1	10 9/16"	6"	2"	6 1/4"	3 1/4"	3"	3/8"	3/16	3/16



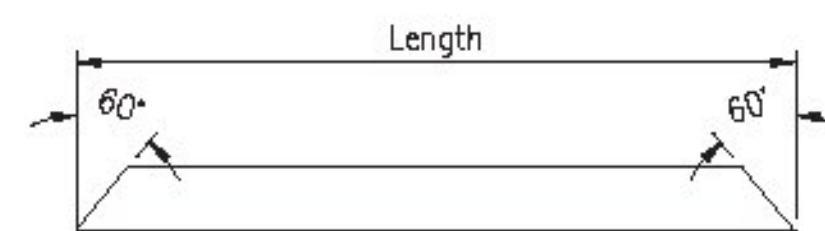
Diagonal & Tab Plate Detail

Qty.	Mk.	Length	Width	B	C	"C" Min.	FB Thk.	d	e
92	dp1	1'-5 1/16"	6"	6 1/4"	3 1/4"	3"	3/8"	3/16	3/16



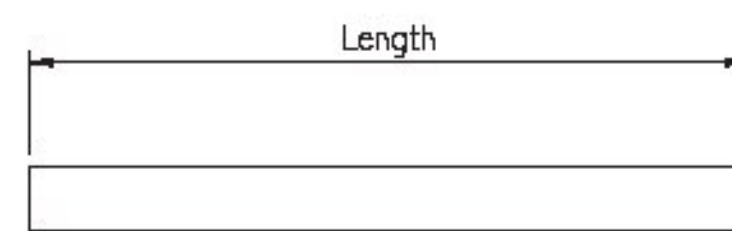
Interior Diagonal & Strut Tab Plate Detail

Qty.	Mk.	Length	Width	FB Thk.	d	e
36	st1	4"	6"	3/8"	3/16	3/16



Bracing Detail

Qty.	Mk.	Length	Angle Size
24	h1	3'-3 7/16"	L 3" x 3" x 1/4"



Diagonal Detail

Qty.	Mk.	Length	Angle Size
104	d1	4'-4"	L 3" x 3" x 1/4"
6	il	4'-11 5/16"	do

Bill Of Materials

Qty.	Mk.	Description	Length	Remarks	Inventory No.
104	d1	L 3" x 3" x 1/4"	4'-4"		L3X3X.25Z
6	il	do	4'-11 5/16"		L3X3X.25Z
24	h1	do	3'-3 7/16"	Cut Both Ends @ 60°	L3X3X.25Z
24	dt1	F.B. 6" x 3/8"	0'-10 9/16"		F86X.375Z
92	dp1	do	1'-5 1/16"		F86X.375Z
36	st1	do	0'-4"		F86X.375Z



5/7/2015

Prior To Galvanizing All Corners And Edges Of Steel Plates, Shapes, Etc., Shall Be Ground To A 1/16" Radius

MATERIAL SPECIFICATIONS:

Brace Angle Shall Have 36 KSI Min. Yield;
A.S.T.M. A709, Gr. 36
Steel Plate & Flat Bar Shall Be A.S.T.M. A709, Gr. 36
All Steel To Be Galv. Per A.S.T.M. A123

Welding Note: All Design Details, Workmanship, Procedures And Inspection Shall Conform With Subsection 506.10

PRINTS ISSUED				REVISIONS				
FOR	NO.	DATE	FOR	NO.	DATE	NO.	DATE	DESCRIPTION

Brookfield Fabricating Corp
P.O. Box 406 - Brookfield, Missouri 64628 - (660)258-2214

Customer: Lafayette Highway Specialties P.O. No: 29510
Project: Project No: STPG SGNL(40) Washington County, Vermont

Description: Fabrication Details Of Tab Plates & Bracing For Box Truss Sections Sta. 68+88.96, RT - Sta. 68+89.05, LT Sheet No: 7 of 9

Printed For: Vermont Drawn By: JF Date: 03/05/15 Checked By: CR - JL Date: 03/19/15 Job No: VT-13675 Rev: