

### Bill of Materials

Qty.	Mk	Description	Length	Remarks	Inventory No.
1	E1L	12.75" O.D. x .375" W. Pipe	32'-2 3/8"		P12.75X.375H
1	E1R	do	32'-2 3/8"		P12.75X.375H
1	E2L	do	27'-2 7/8"		P12.75X.375H
1	E2R	do	27'-2 7/8"		P12.75X.375H
4	bp1	PL 2" x 1'-5 1/2"	1'-5 1/2"		PL2Z
4	a1	WT 6 x 15#	1'-0"	See Detail	W12X30E
2	b1	do	5'-4"	Mill To: 5'-2 1/4" @ 0'	W12X30E
8	SH1	FB 6 1/2" x 1/4"	0'-9 1/2"		FB6.5X.25Z
2	hh	PL 2 1/2" x 5"	0'-9"		HANDHOLE-SV9A
2	HC	PL 1/4" x 5"	0'-9"	Cut To Fit	HANDHOLE-COVER-SV9A
4	tp	PL 1/4" x 3/4"	0'-1"		HANDHOLE-TAB
2	HG	1/8" x 5"	0'-9"	Neoprene Gasket	1/8" NEOPRENE
4	B1	1/4" S.S. Hex Bolt	3/4"		BSS02.75
2	-	S.S. Chain	1'-6"		#12SS-CHAIN*



Prior To Galvanizing All Corners And Edges Of Steel Plates, Shapes, Etc., Shall Be Ground To A 1/16" Radius

See Sheet 8 Of 9 For Tab Plates "dt", "dp", "st", "rt" & Bracing "d"

**MATERIAL SPECIFICATIONS:**

Steel Endframe Pipe To Be 55 KSI Min. Yield  
 API 5L X42 Gr.  
 API 5L X52 Gr.  
 A500 Gr. B Or C

Steel Plate & Structural Shapes To Be A.S.T.M. A709, Gr. 36

Galvanize All Steel After Fabrication Per A.S.T.M. A123

S.S. Screws: (AISI 300 Series) Passivated.

Welding Note: All Design Details, Workmanship, Procedures And Inspection Shall Conform With Subsection 506.10

PRINTS ISSUED				REVISIONS				
FOR	NO.	DATE	FOR	NO.	DATE	NO.	DATE	DESCRIPTION

**Brookfield Fabricating Corp**  
 P.O. Box 406 - Brookfield, Missouri 64628 - (660)258-2214

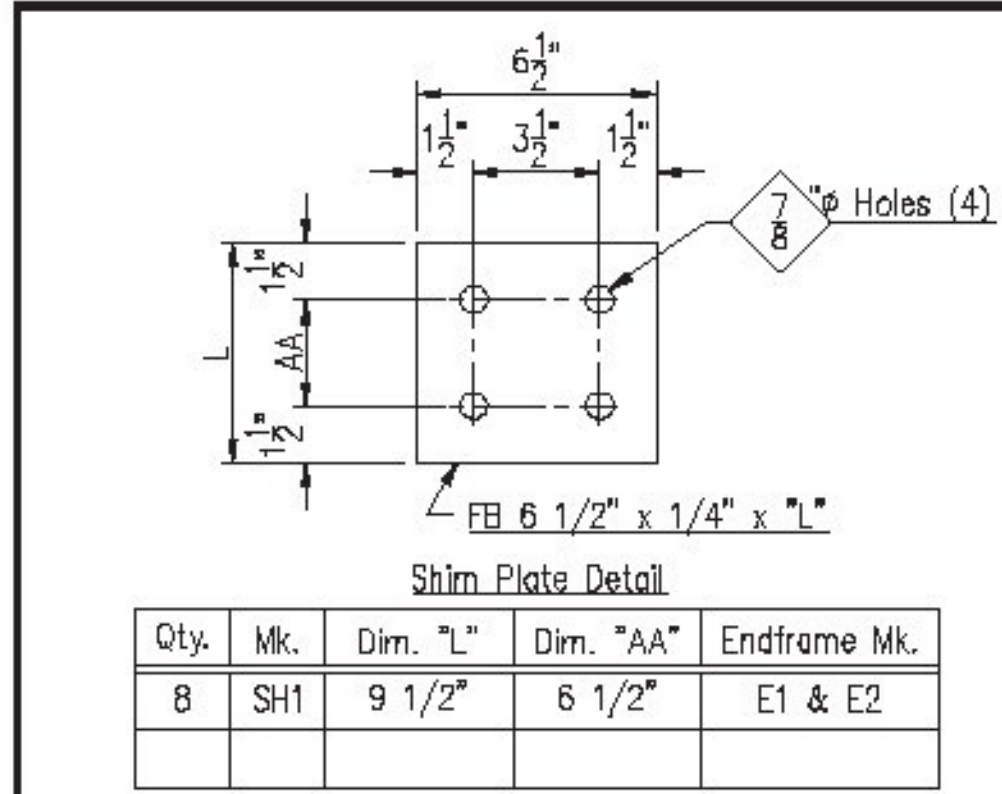
Customer: Lafayette Highway Specialties P.O. No: 29510

Project: Project No: STPG SGNL(40)  
 Washington County, Vermont

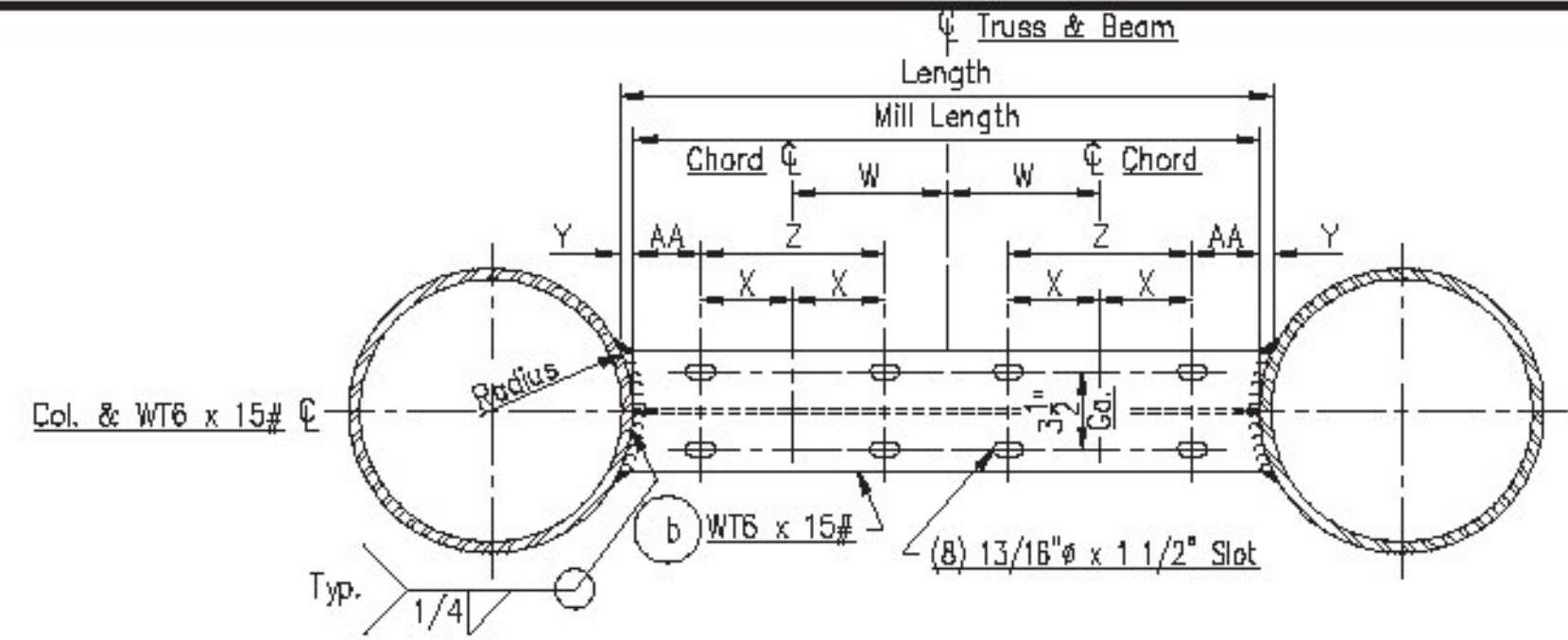
Description: Fabrication Details Of Endframes For Box Truss Sections  
 Sta. 68+88.96, RT - Sta. 68+89.05, LT

Printed For: Vermont  
 Drawn By: JF  
 Date: 03/05/15  
 Checked By: CR-JL  
 Date: 03/19/15

Job No: VT-13675  
 Rev: 6 of 9

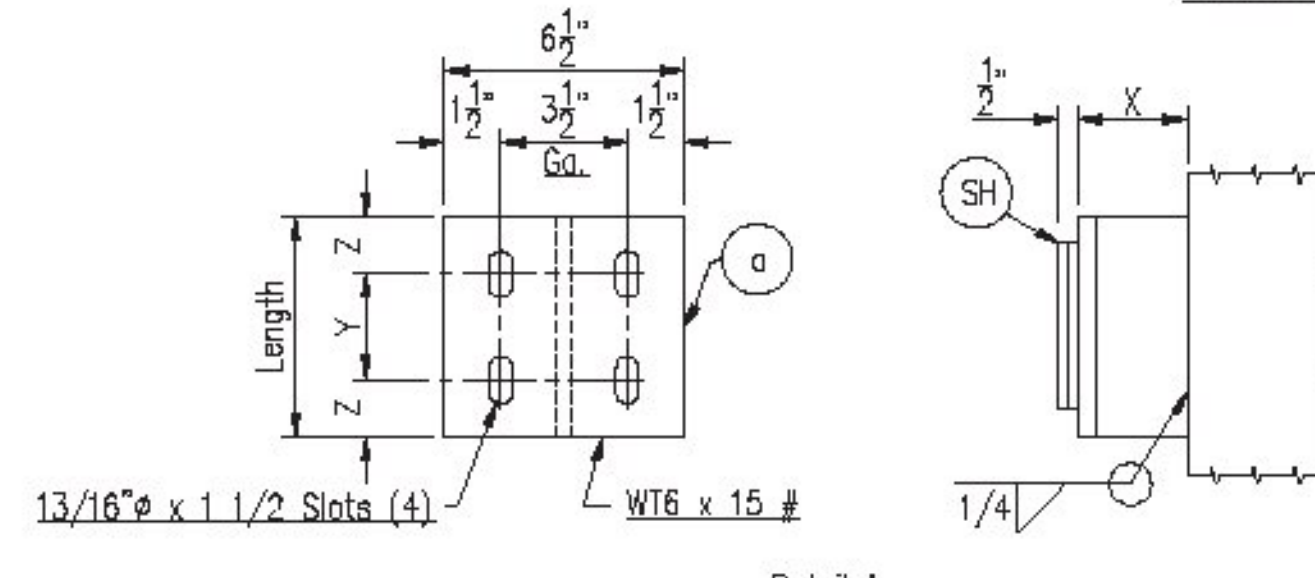
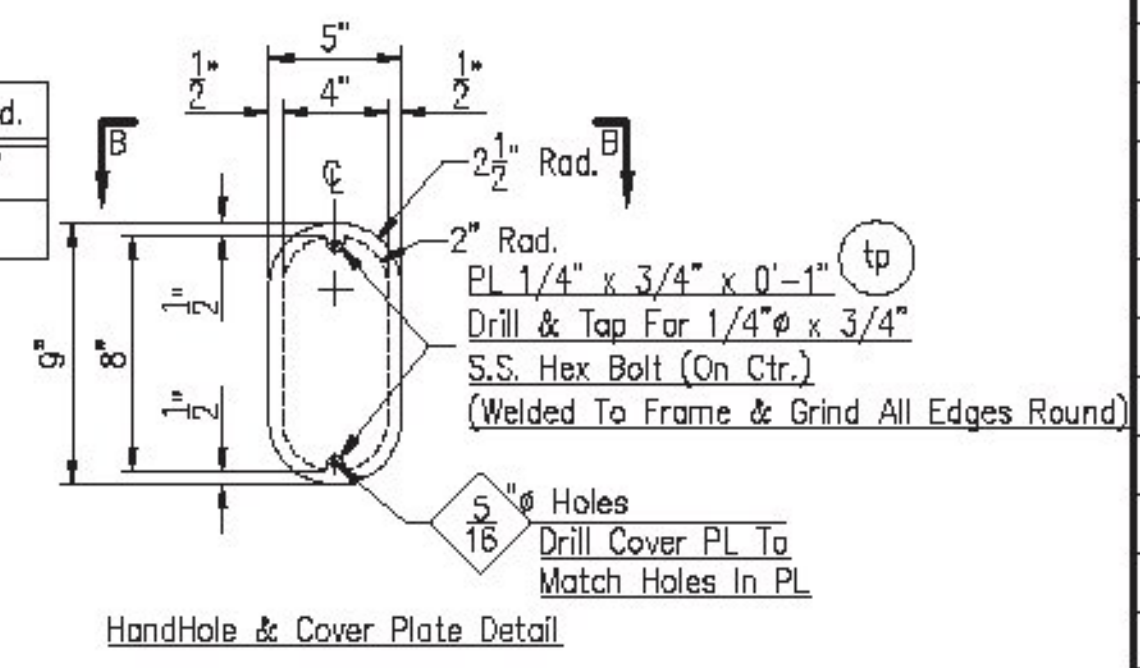
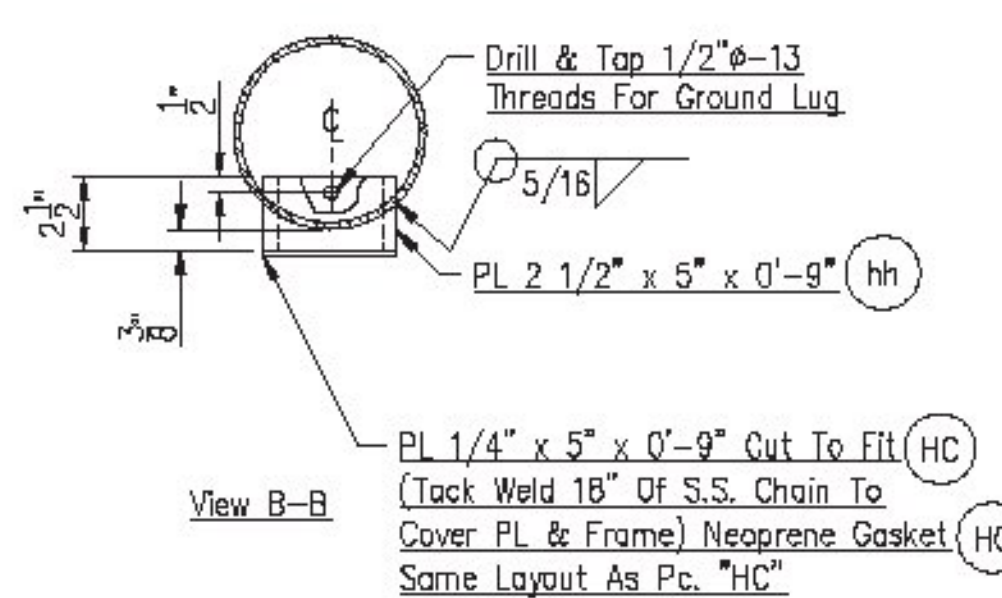


Qty.	Mk.	Dim. "L"	Dim. "AA"	Endframe Mk.
8	SH1	9 1/2"	6 1/2"	E1 & E2



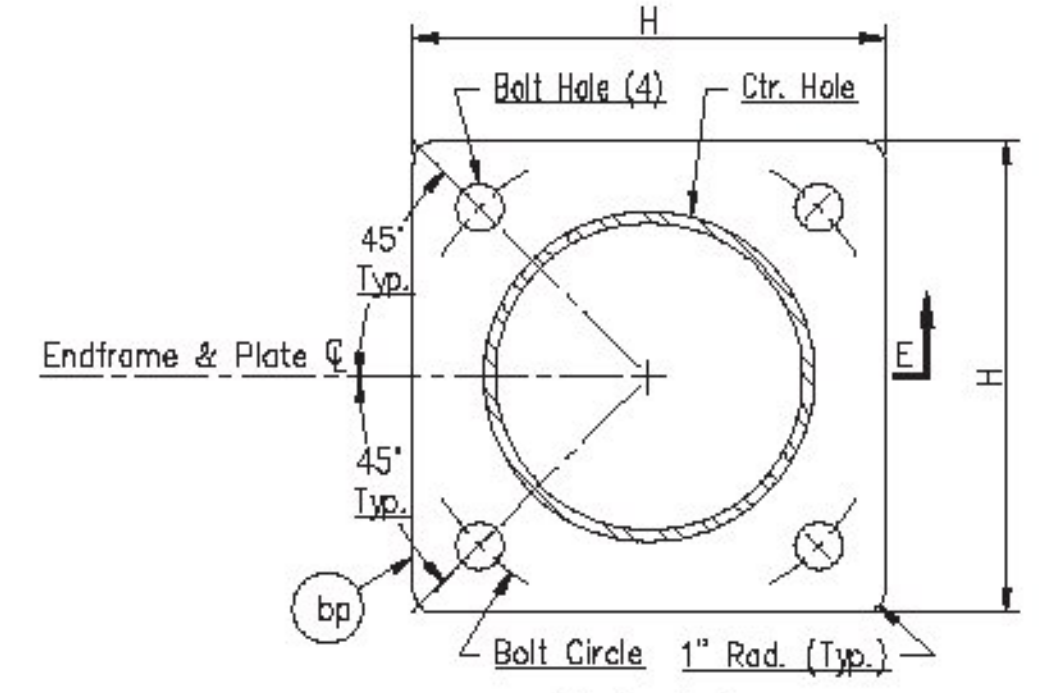
Bottom WT6 x 15# Support

Qty.	Mk.	Cut Length	Mill Length	W	X	Y	Z	AA	Post Rad.
2	b1	5'-4"	5'-2 1/4"	2'-0"	3 1/4"	7/8"	6 1/2"	3 7/8"	6 3/8"



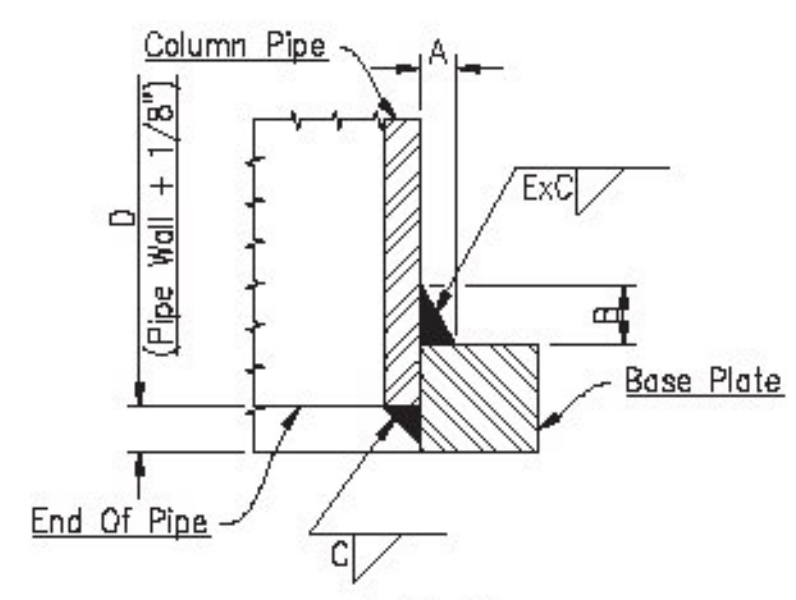
Detail 1

Qty.	Mk.	Length	Dim. "X"	Dim. "Y"	Dim. "Z"
4	a1	1'-0"	3 13/16"	6 1/2"	2 3/4"



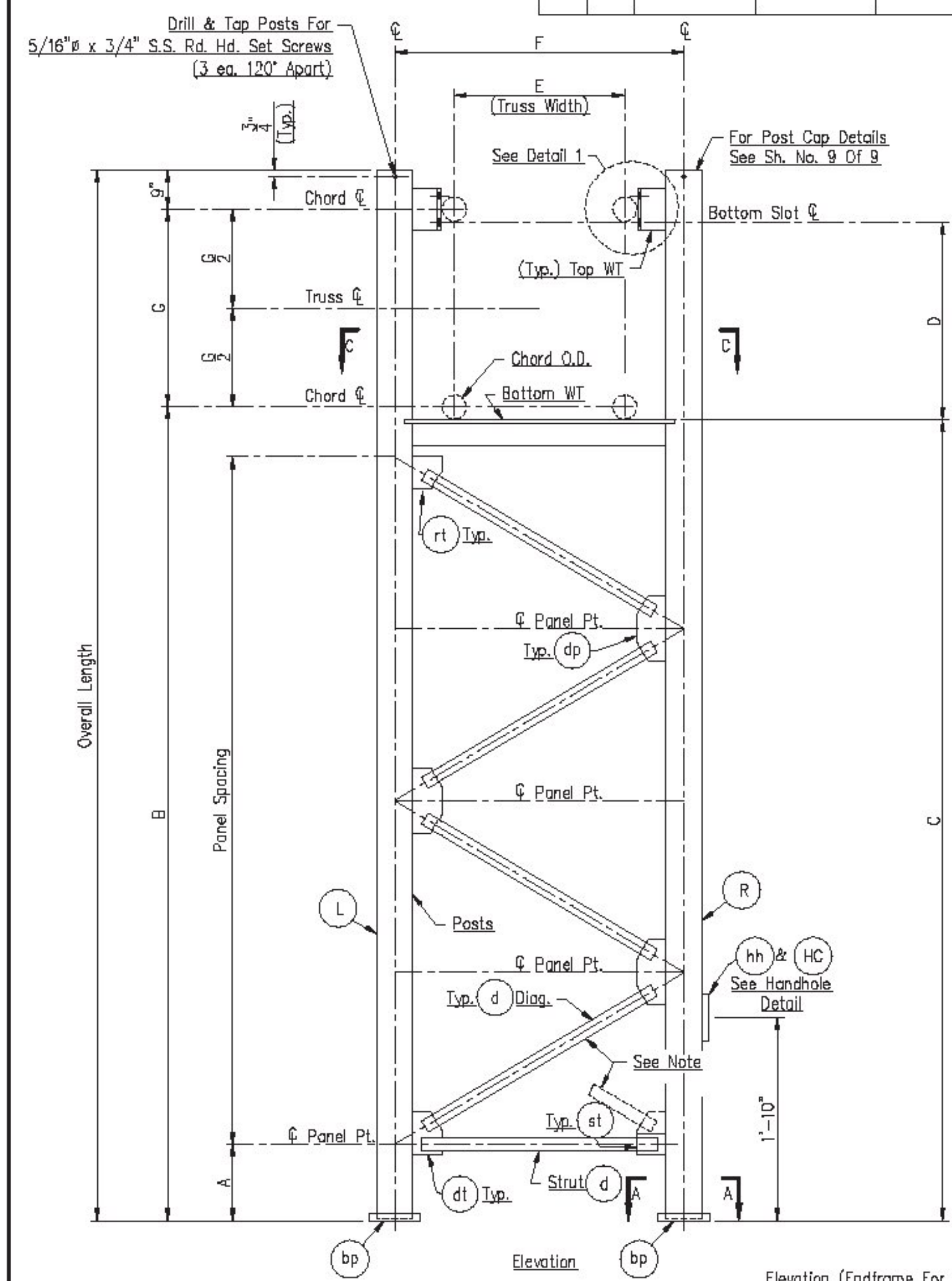
Section A-A (Base Plate Detail)

Qty.	Base Plate Mk.	Plate Thk.	H	Bolt Hole	Ctr. Hole	Bolt Circle
4	bp1	2"	1'-5 1/2"	1 3/4"	12 7/8"	18"



Section E (Unequal Weld Detail)

A	B	C	D	E
3/8"	11/16"	3/8"	1/2"	11/16"



NOTE: Web Pattern Is Typical Of All End Frames From The Top Down. However, An Odd Number Of Panels Will Result In Bottom Diagonal Landing On Front Post. See Table For Number Of Panels.

Sta.	Frame Mk.	Column Size	Overall Length	Chord O.D.	Panel Spacing	A	B	C	D	E	F	G	H	WT Mk.	Base Plate Mk.	Diag. MK "d"	Strut MK "st"	Gusset MK "dt"	Gusset MK "dp"	Gusset MK "st"	Gusset MK "rt"
68+88.96, RT / 68+89.05, LT	E1	12.75" O.D. x .375" W.	32'-2 7/8"	5.563"	4 @ 6'-1 1/2"	1'-11 7/8"	27'-5 7/8"	27'-3 1/16"	3'-11 9/16"	4'-0"	6'-3"	4'-0"	1'-0"	a1	bp1	d2	d3	dt2	dp2	st2	rt1
	E2	12.75" O.D. x .375" W.	27'-3 3/8"	5.563"	3 @ 6'-6 1/8"	2'-0"	22'-6 3/8"	22'-3 9/16"	3'-11 9/16"	4'-0"	6'-3"	4'-0"	1'-0"	a1	bp1	d4	d3	dt3	dp3	st2	rt2