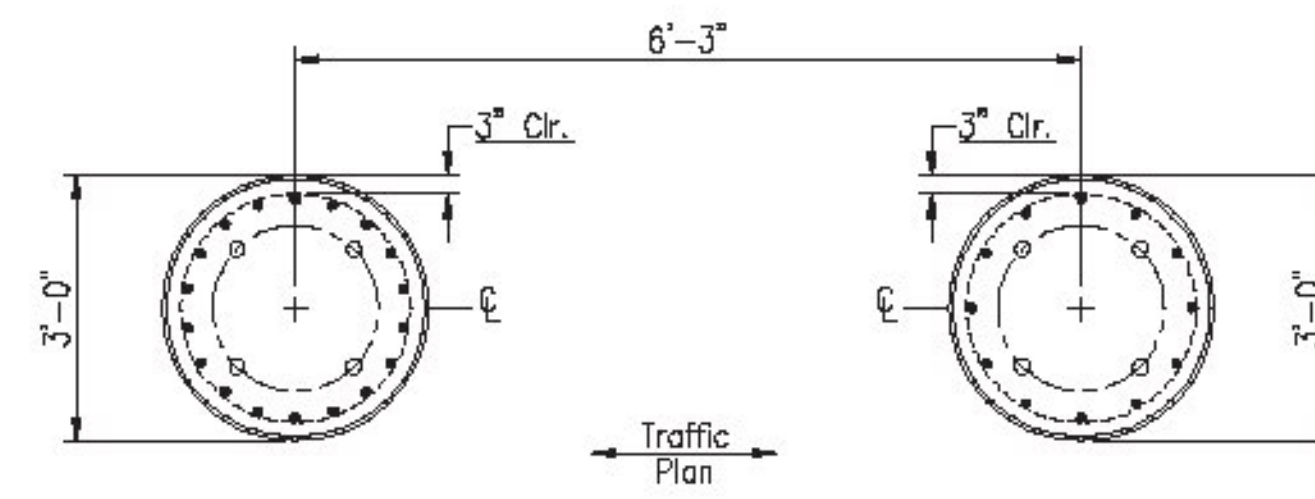
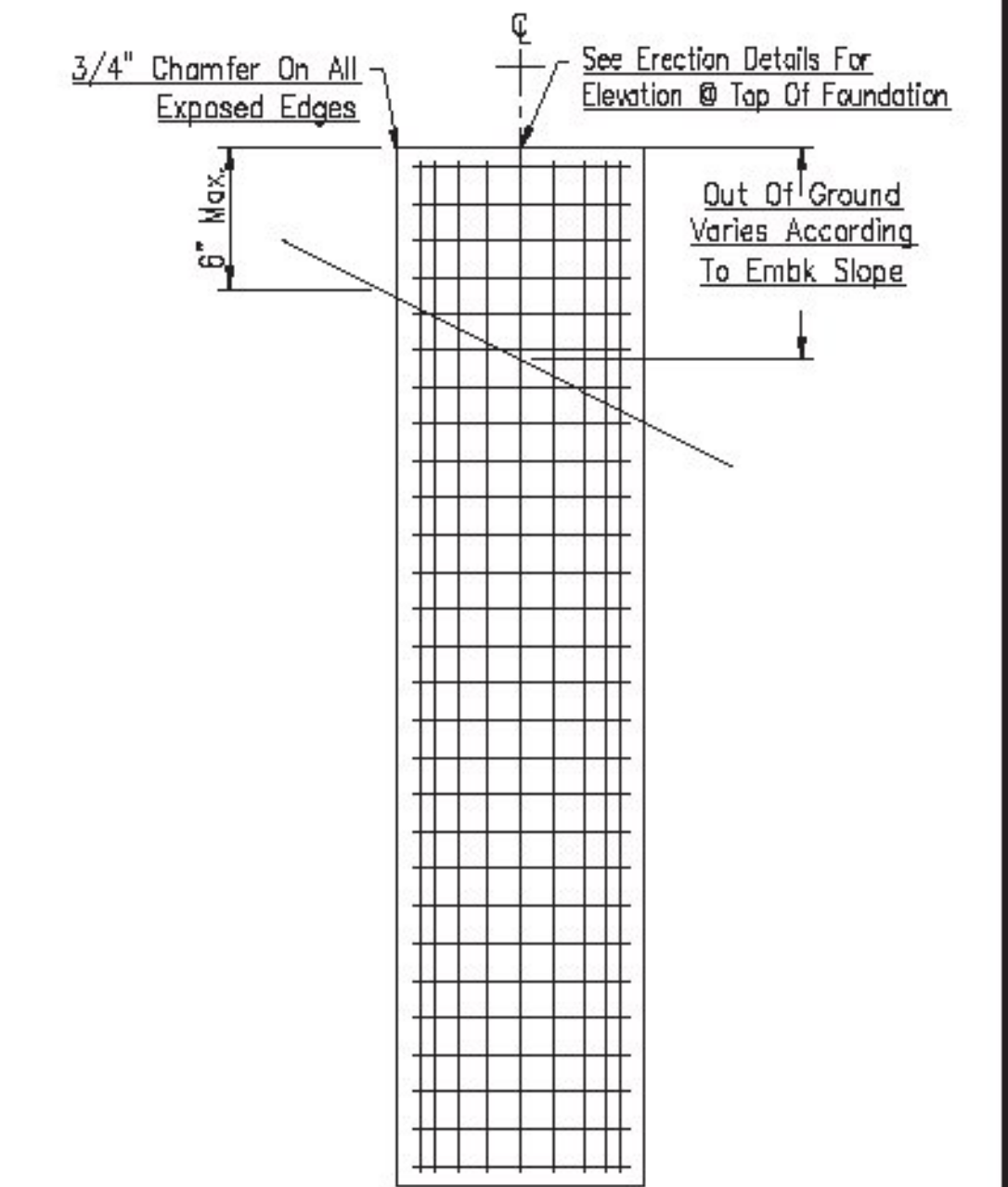
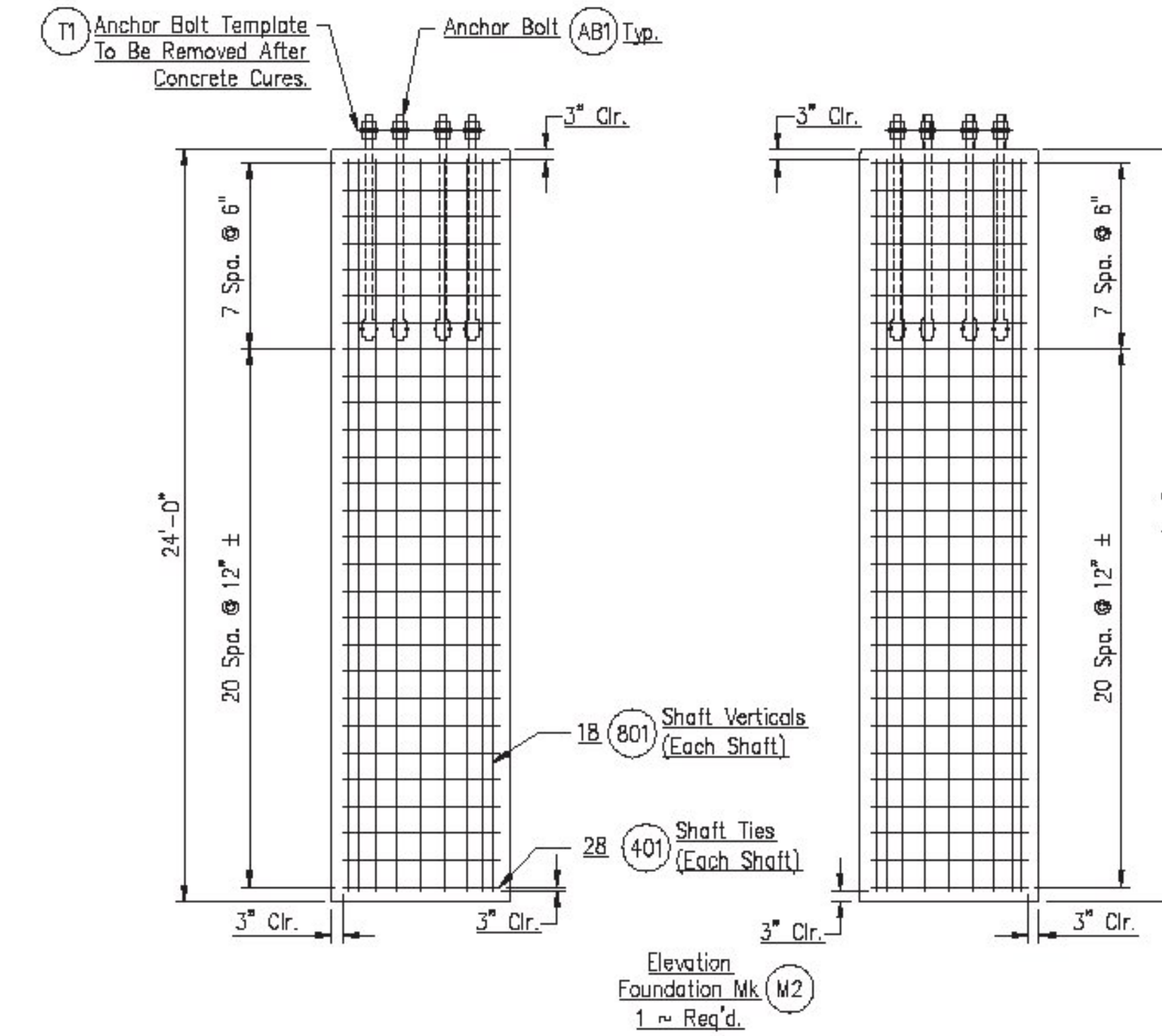
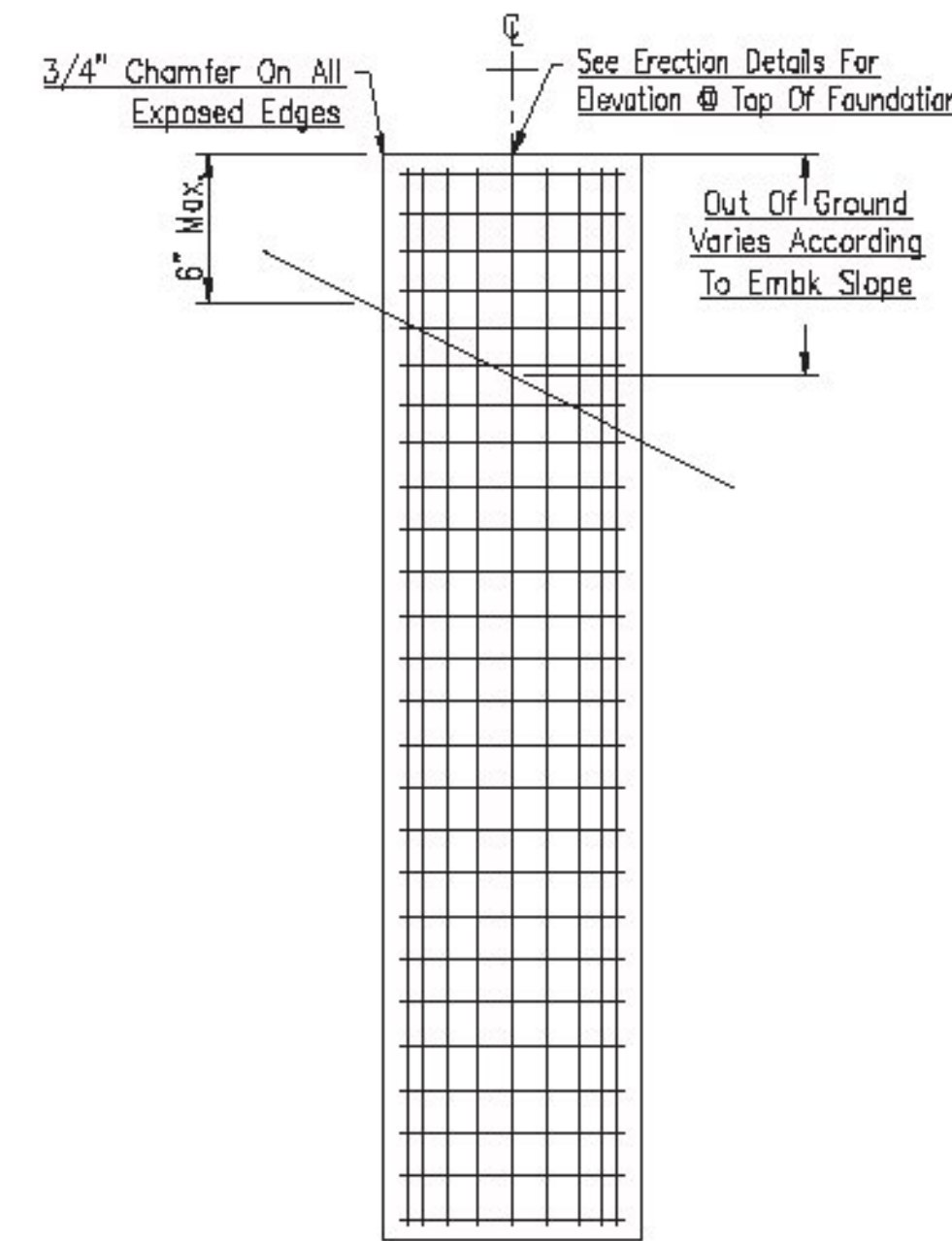
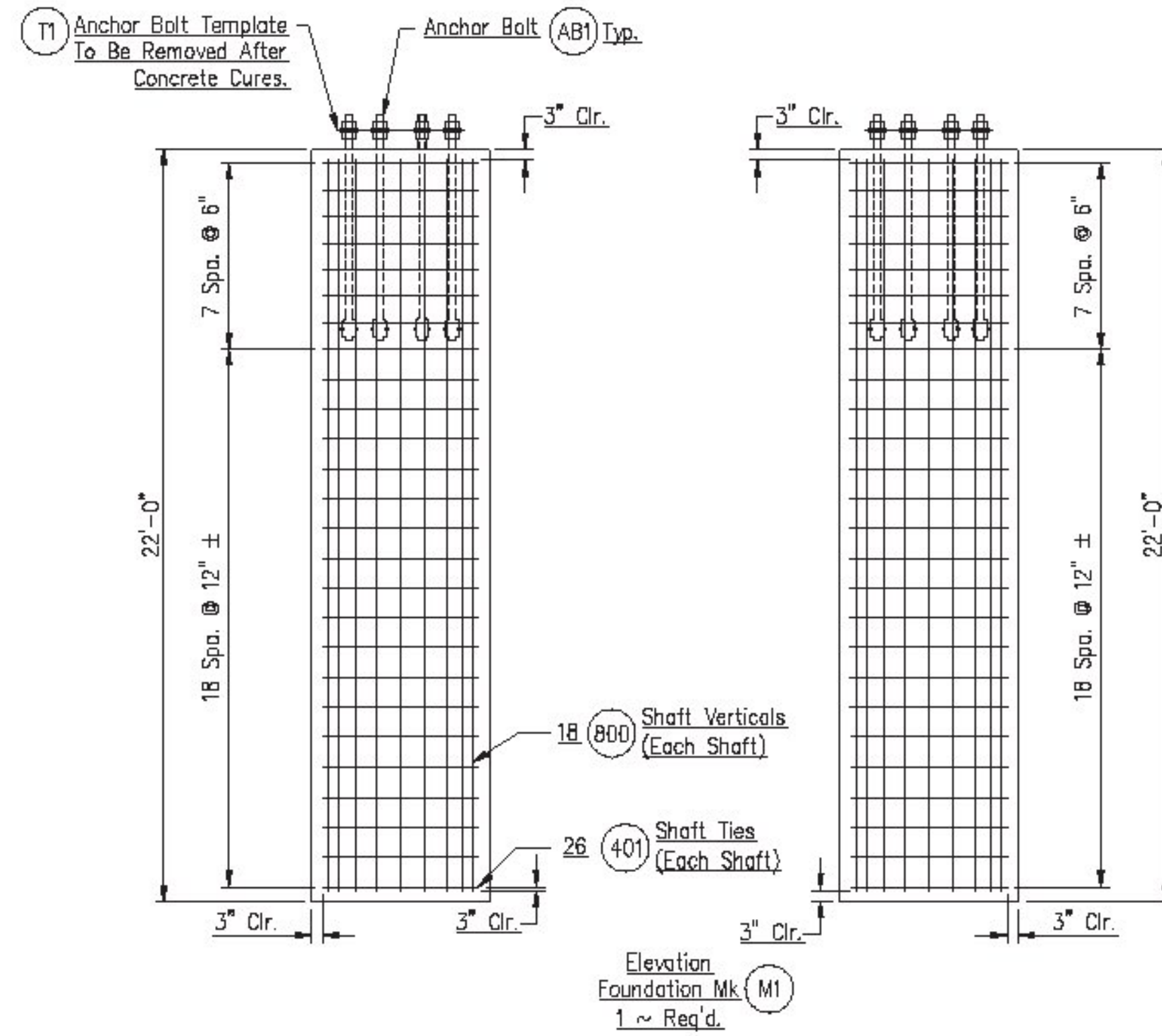


Note: Qty.'s Are Per Shaft
 5.8 Cubic Yds. Of Concrete
 1185 Lbs. Of Reinforcing Steel
 1 1/2 "Ø Anchor Bolts
 18 " Bolt Circle
 Water Table Level:
 Water Level @ 21.7 Ft.

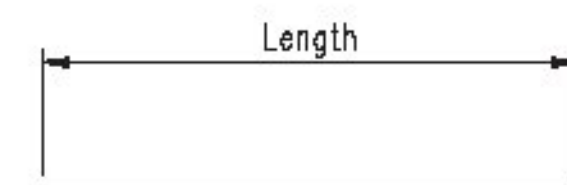


Note: Qty.'s Are Per Shaft
 6.3 Cubic Yds. Of Concrete
 1293 Lbs. Of Reinforcing Steel
 1 1/2 "Ø Anchor Bolts
 18 " Bolt Circle
 Water Table Level:
 Water Level @ 21.7 Ft.



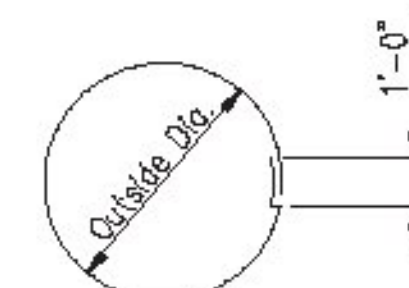
Reinforcing Schedule
 Steel Deformed Bars Shall Meet The Requirements Of A.S.T.M. A615, Gr.60.

- NOTES:
1. Fabricator Shall Furnish Anchor Rods & Templates Only. All Other Foundation Material Will Be Supplied By Others.
 2. Foundations & Construction Methods Shall Meet Requirements Of V.T.D.O.T. Standard Specifications.
 3. Minimum Soil Density Req'd. For These Foundations Is Shown On Individual Foundation Details. Minimum Compressive Strength Of Concrete: 4 KSI Steel Reinf. Bars Shall Meet Requirements Of A.S.T.M. A615, Gr. 60
 4. Backfill Shall Be In Place & Compacted To Satisfaction Of The Engineer Before Erection Of End Column.
 5. Assume Water Table Is Below Bottom Of Foundation. If Site Condition Vary From This Assumption, Notify Designer.



Straight
 (Lateral & Longitudinal)

Qty.	Mk.	Bar Size	Length
36	800	#8	21'-6"
36	801	#8	23'-6"



Circle
 (Pedestal Ties)

Qty.	Mk.	Bar Size	Outside Dia.	Length (Before Bend)
108	401	#4	2'-6"	8'-11 11/16"



PRINTS ISSUED				REVISIONS			
FOR	NO.	DATE		FOR	NO.	DATE	DESCRIPTION

Brookfield Fabricating Corp
 P.O. Box 406 - Brookfield, Missouri 64628 - (660)258-2214

Customer: Lafayette Highway Specialties P.O. No: 29510

Project: Project No: STPG SGNL(40)
 Washington County, Vermont

Description: Foundation Details Of Drilled Shaft Footings For
 Sta. 68+88.96, RT - Sta. 68+89.05, LT

Printed For: Vermont
 Drawn By: JF
 Date: 03/05/15
 Checked By: CR-JL
 Date: 03/19/15
 Job No: VT-13675
 Rev. 4 of 9