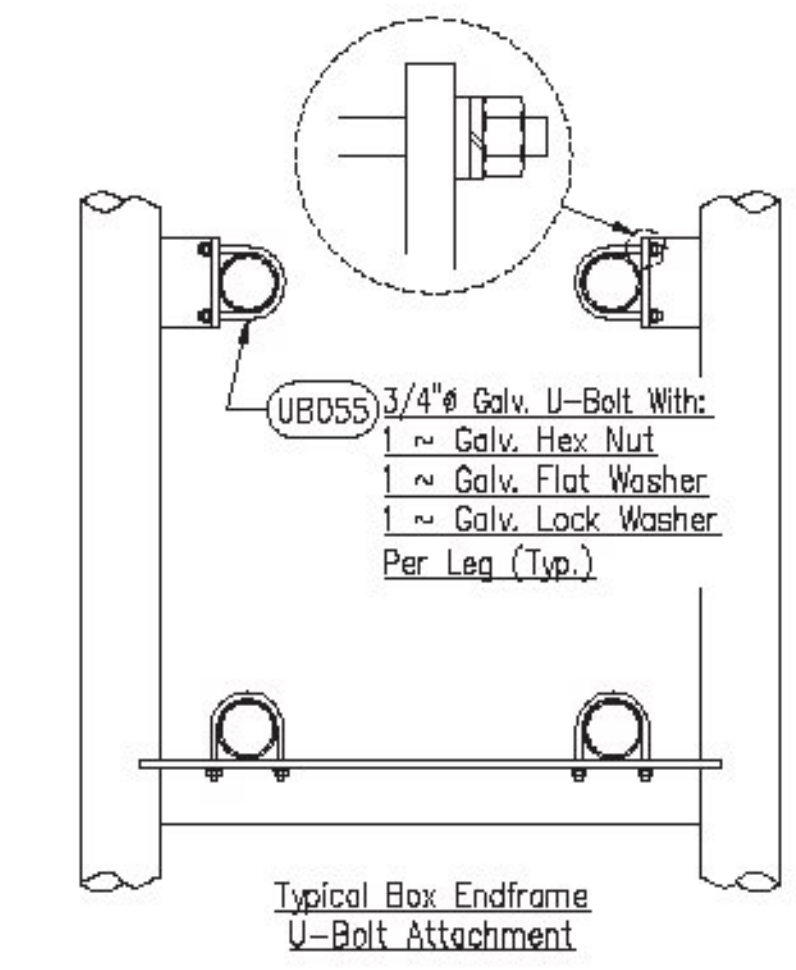
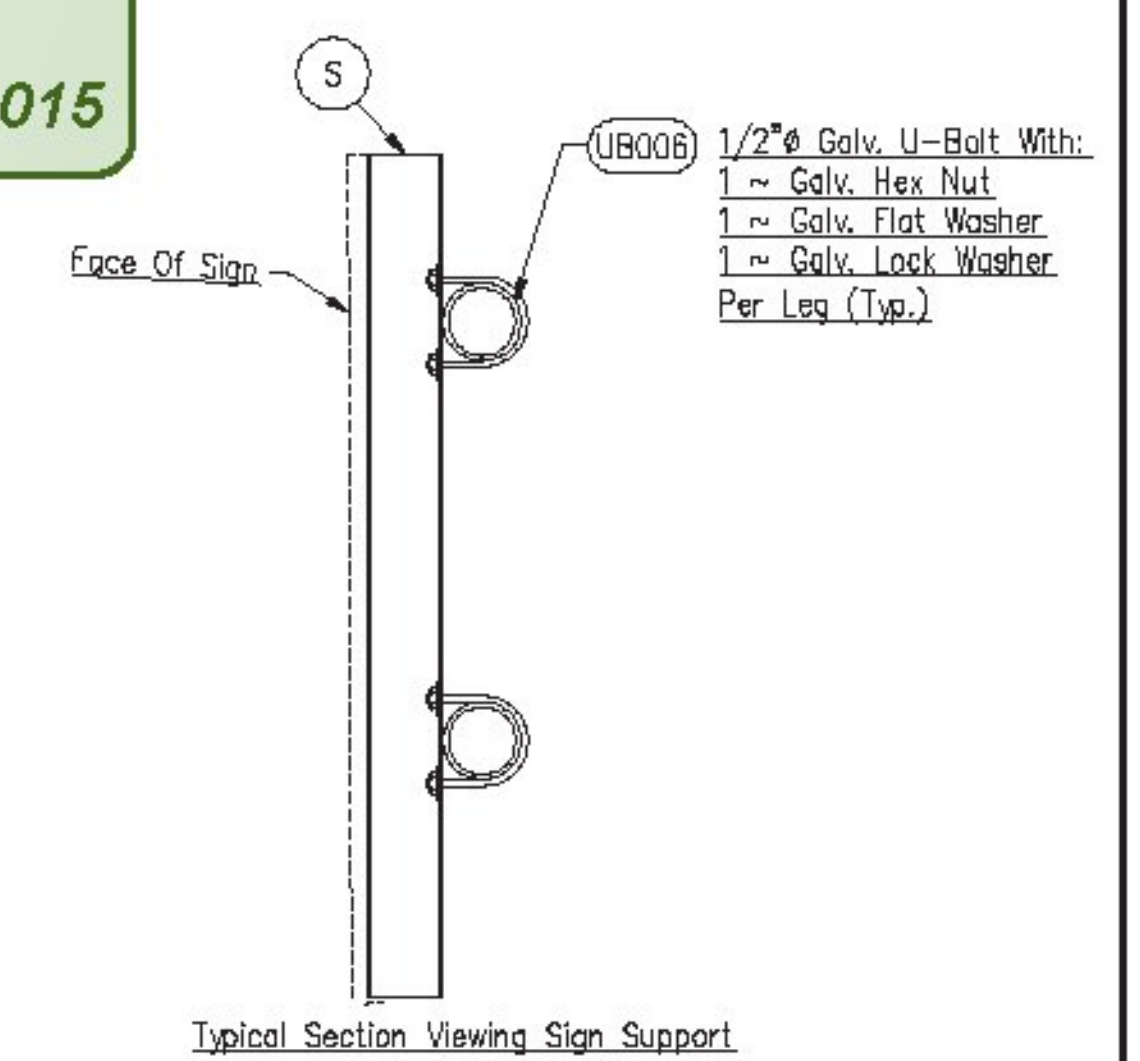
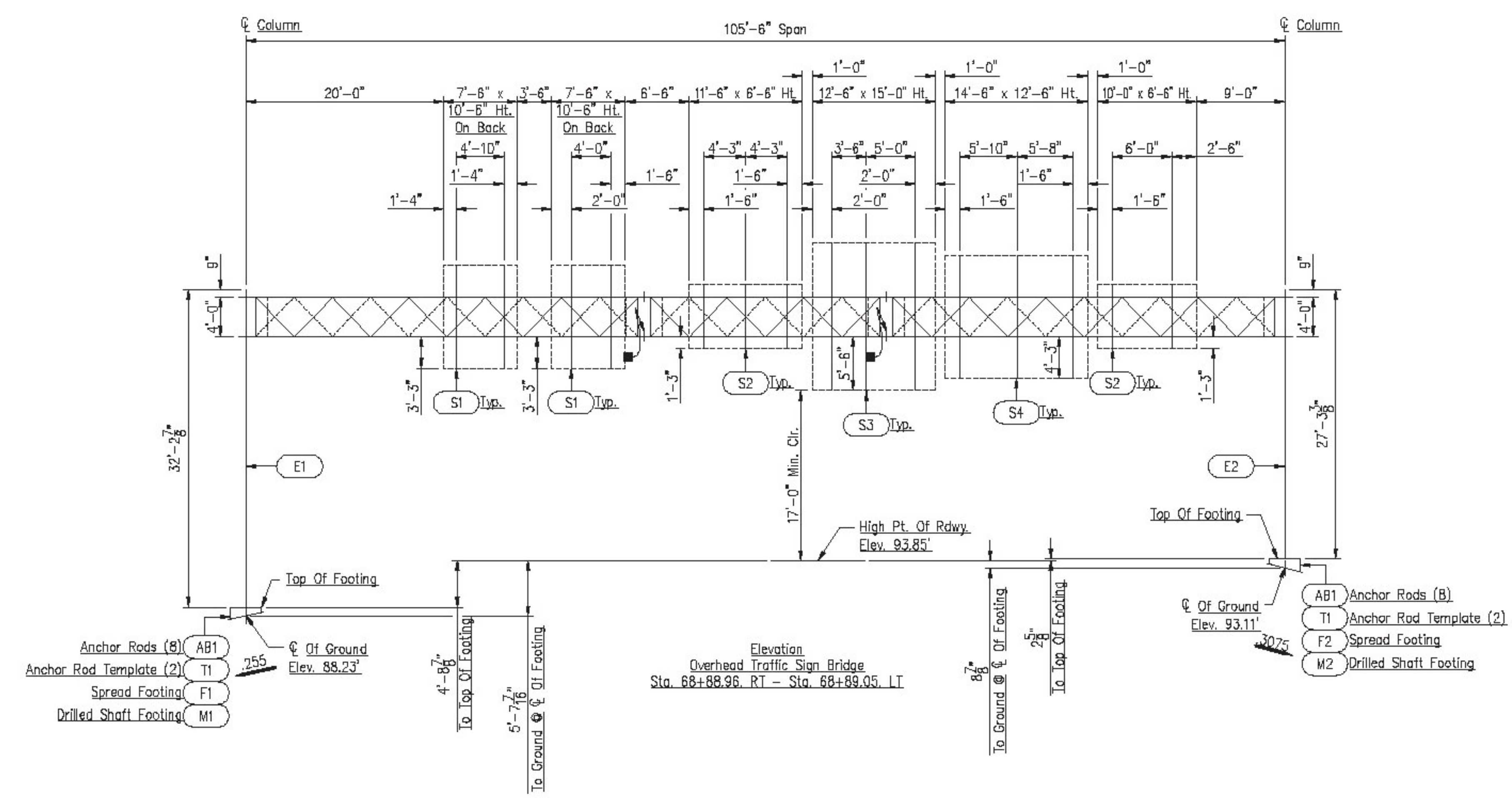
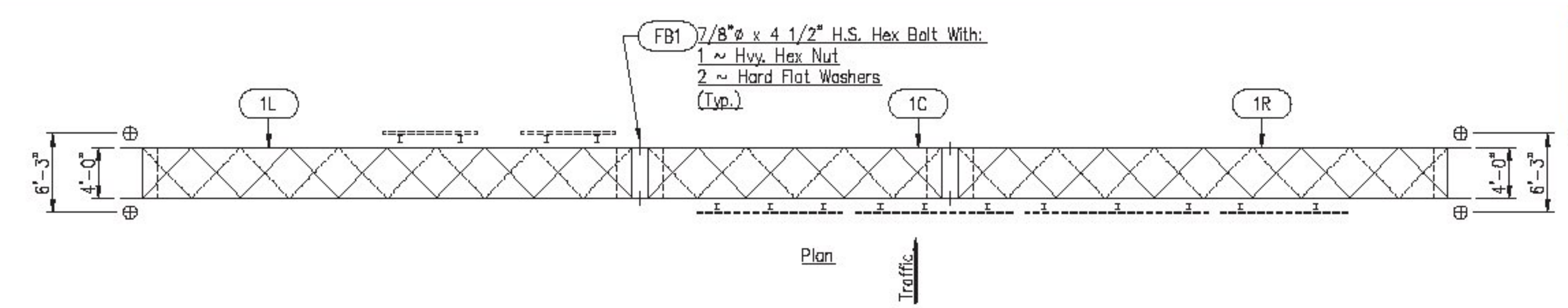
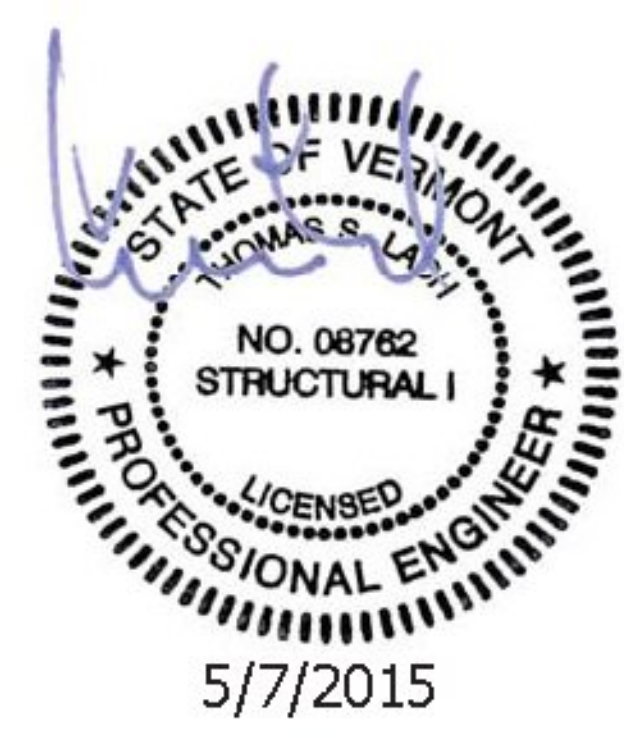
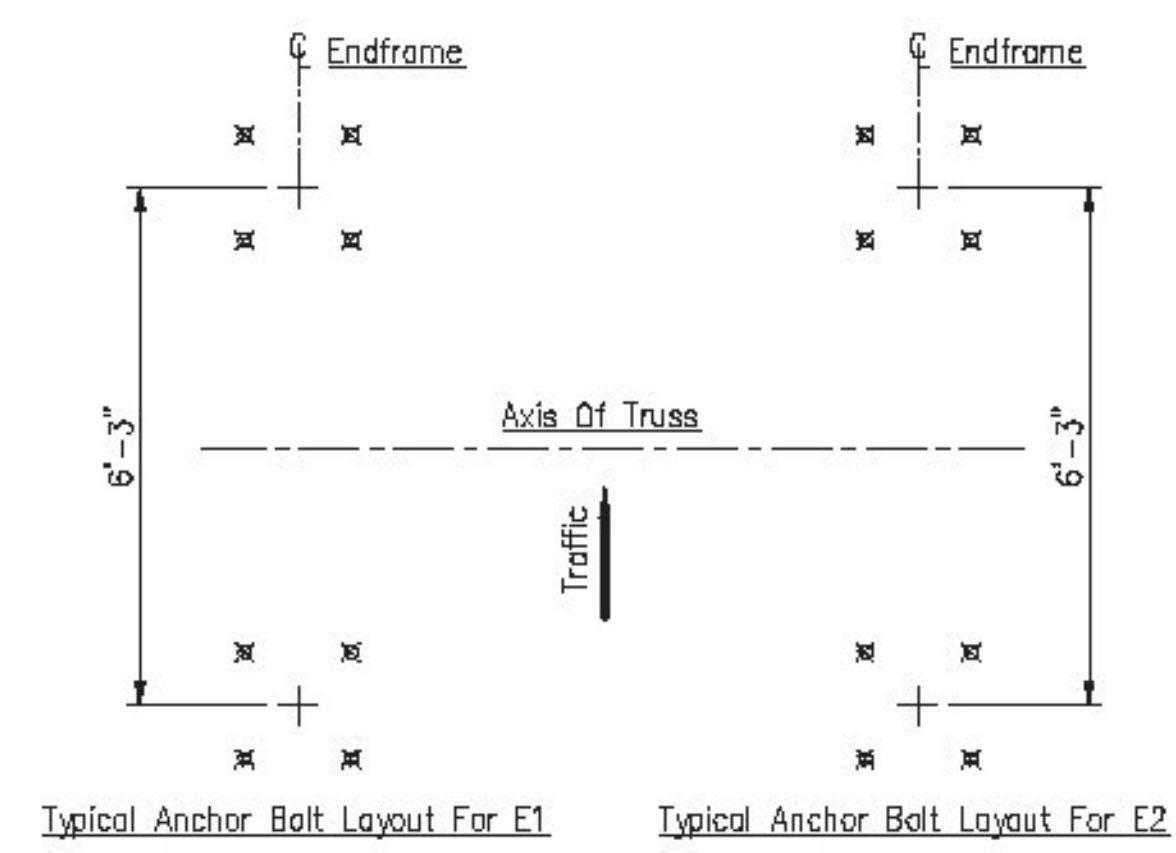


**APPROVED**  
By Taylor Sisson at 3:28 pm, May 15, 2015



**NOTES:**  
Contractor To Verify Elevations.  
The Truss Section Mk No's. Are Stamped On The Top Of The Bottom Front Flanges.  
Wind Design Velocity = 90 MPH  
Ice Loading = 3 PSF  
Pay Item:  
1 Ea. ~Overhead Traffic Sign Bridge Sta. 68+88.96, RT - Sta. 68+89.05, LT  
Pay Item No: 677.13



PRINTS ISSUED				REVISIONS				
FOR	NO.	DATE	FOR	NO.	DATE	NO.	DATE	DESCRIPTION

**Brookfield Fabricating Corp**  
P.O. Box 406 - Brookfield, Missouri 64628 - (660)258-2214

Customer: Lafayette Highway Specialties P.O. No: 29510

Project: Project No: STPG SGNL(40)  
Washington County, Vermont

Description: Erection Details Of Box Truss Overhead Traffic Sign Bridge @ Sta. 68+88.96, RT - Sta. 68+89.05, LT

Printed For: Vermont  
Drawn By: JF  
Date: 03/05/15  
Checked By: CR - JL  
Date: 03/19/15  
Job No: VT-13675  
Rev: 1 of 9