

**TEMPORARY 4 INCH WHITE LINE**

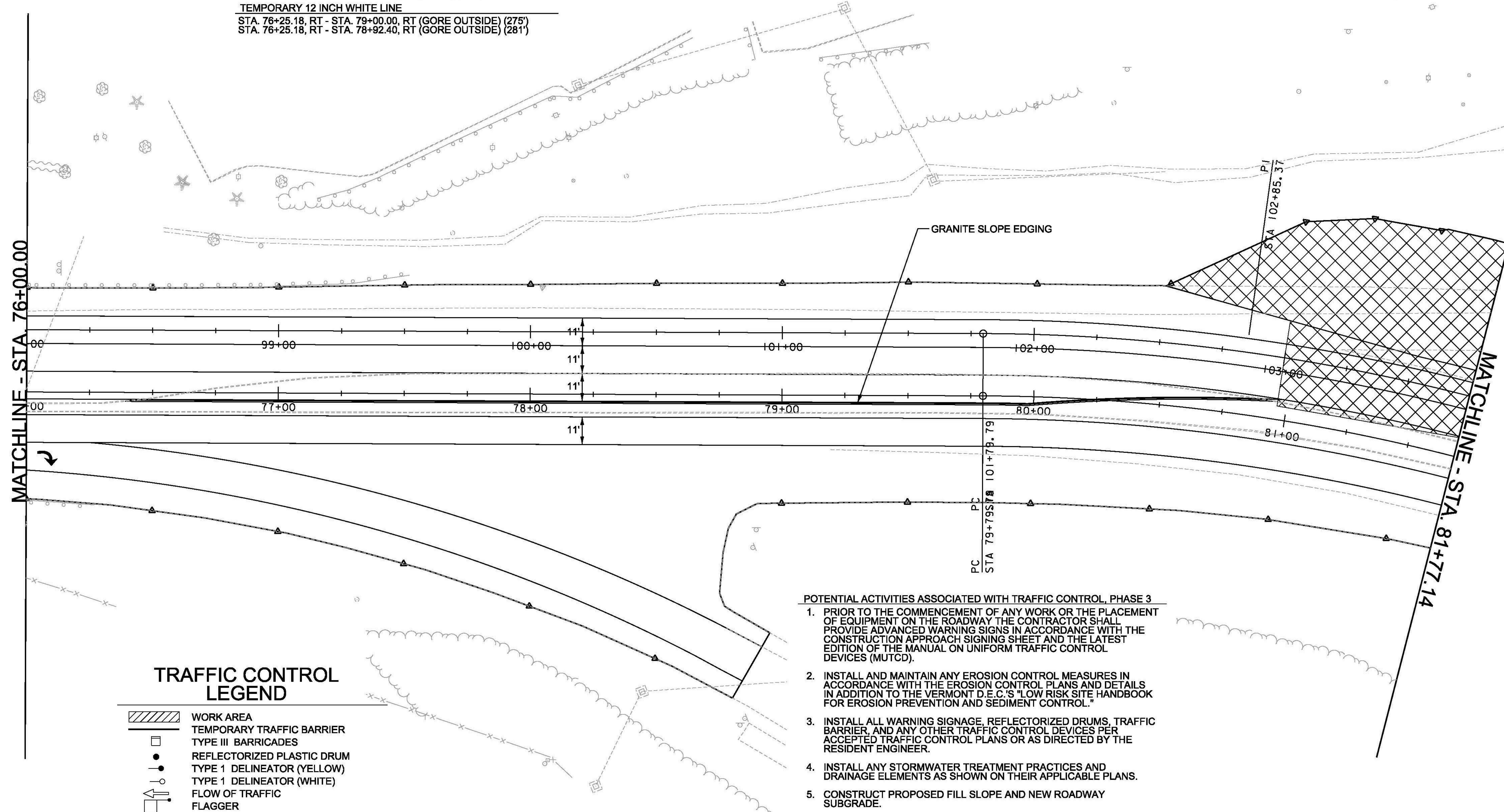
STA. 76+00.00, LT - STA. 81+44.03, LT (DIAGONALS) (740')  
 STA. 76+00.00, LT - STA. 81+77.14, LT (SOLID) (577')  
 STA. 76+00.00, LT - STA. 81+77.14, LT (DASHED) (574')  
 STA. 76+00.00, LT - STA. 79+99.23, LT (SOLID) (400')  
 STA. 79+99.23, LT - STA. 81+00.00, LT (DOTTED) (102')  
 STA. 76+00.00, LT - STA. 76+25.18, LT (SOLID) (25')  
 STA. 79+00.00, RT - STA. 81+77.14, RT (SOLID) (264')  
 STA. 79+13.66, RT - STA. 81+77.14, RT (DIAGONALS) (550')  
 STA. 76+00.00, RT - STA. 78+84.68, RT (SOLID) (299')

**TEMPORARY 4 INCH YELLOW LINE**

STA. 76+00.00, RT - STA. 81+77.14, RT (SOLID) (571')  
 STA. 76+00.00, RT - STA. 81+77.14, RT (SOLID) (567')

**TEMPORARY 12 INCH WHITE LINE**

STA. 76+25.18, RT - STA. 79+00.00, RT (GORE OUTSIDE) (275')  
 STA. 76+25.18, RT - STA. 78+92.40, RT (GORE OUTSIDE) (281')



**TRAFFIC CONTROL LEGEND**

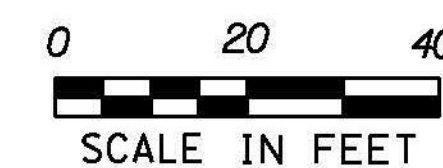
- WORK AREA
- TEMPORARY TRAFFIC BARRIER
- TYPE III BARRICADES
- REFLECTORIZED PLASTIC DRUM
- TYPE 1 DELINEATOR (YELLOW)
- TYPE 1 DELINEATOR (WHITE)
- FLOW OF TRAFFIC
- FLAGGER
- SIGN
- PORTABLE CHANGEABLE MESSAGE SIGN

**POTENTIAL ACTIVITIES ASSOCIATED WITH TRAFFIC CONTROL, PHASE 3**

1. PRIOR TO THE COMMENCEMENT OF ANY WORK OR THE PLACEMENT OF EQUIPMENT ON THE ROADWAY THE CONTRACTOR SHALL PROVIDE ADVANCED WARNING SIGNS IN ACCORDANCE WITH THE CONSTRUCTION APPROACH SIGNING SHEET AND THE LATEST EDITION OF THE MANUAL ON UNIFORM TRAFFIC CONTROL DEVICES (MUTCD).
2. INSTALL AND MAINTAIN ANY EROSION CONTROL MEASURES IN ACCORDANCE WITH THE EROSION CONTROL PLANS AND DETAILS IN ADDITION TO THE VERMONT D.E.C.'S "LOW RISK SITE HANDBOOK FOR EROSION PREVENTION AND SEDIMENT CONTROL."
3. INSTALL ALL WARNING SIGNAGE, REFLECTORIZED DRUMS, TRAFFIC BARRIER, AND ANY OTHER TRAFFIC CONTROL DEVICES PER ACCEPTED TRAFFIC CONTROL PLANS OR AS DIRECTED BY THE RESIDENT ENGINEER.
4. INSTALL ANY STORMWATER TREATMENT PRACTICES AND DRAINAGE ELEMENTS AS SHOWN ON THEIR APPLICABLE PLANS.
5. CONSTRUCT PROPOSED FILL SLOPE AND NEW ROADWAY SUBGRADE.
6. CONSTRUCT PROPOSED ROADWAY AND INSTALL GUARDRAIL. CONSTRUCT SUBGRADE TRANSITION.
7. PLACE BASE COURSES OF PAVEMENT AND INSTALL TEMPORARY PAVEMENT MARKINGS AND SIGNING.

**NOTE:**

1. SEE TRAFFIC CONTROL GENERAL NOTES SHEET FOR ADDITIONAL INFORMATION AND REQUIREMENTS.



PROJECT NAME:	BERLIN	PLOT DATE:	10/28/2014
PROJECT NUMBER:	STPG SGNL (40)	DRAWN BY:	I. DEGUTIS
FILE NAME:	t11b358+cp.dgn	DESIGNED BY:	M. LACROIX
PROJECT LEADER:	P. COBURN	CHECKED BY:	M. LACROIX
TRAFFIC CONTROL PLAN - PHASE 3 PLAN 1		SHEET 115 OF 123	