

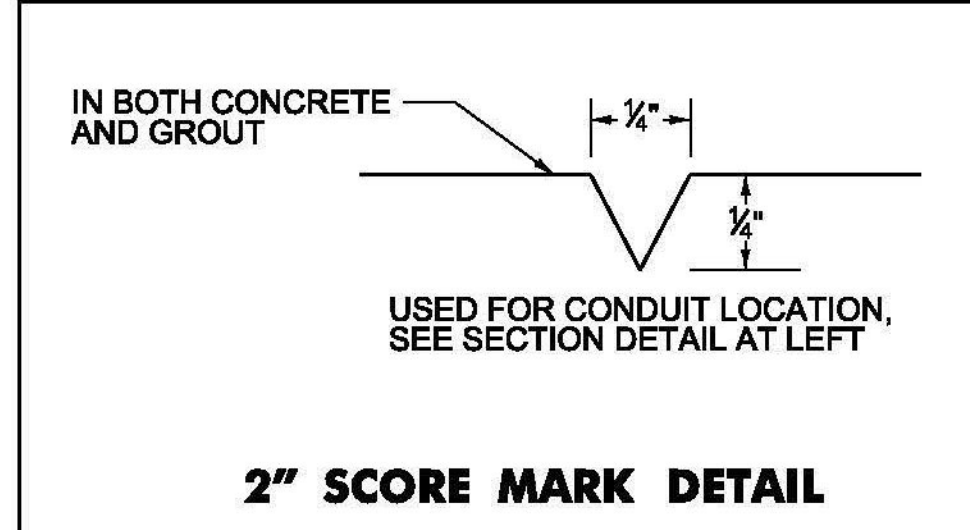
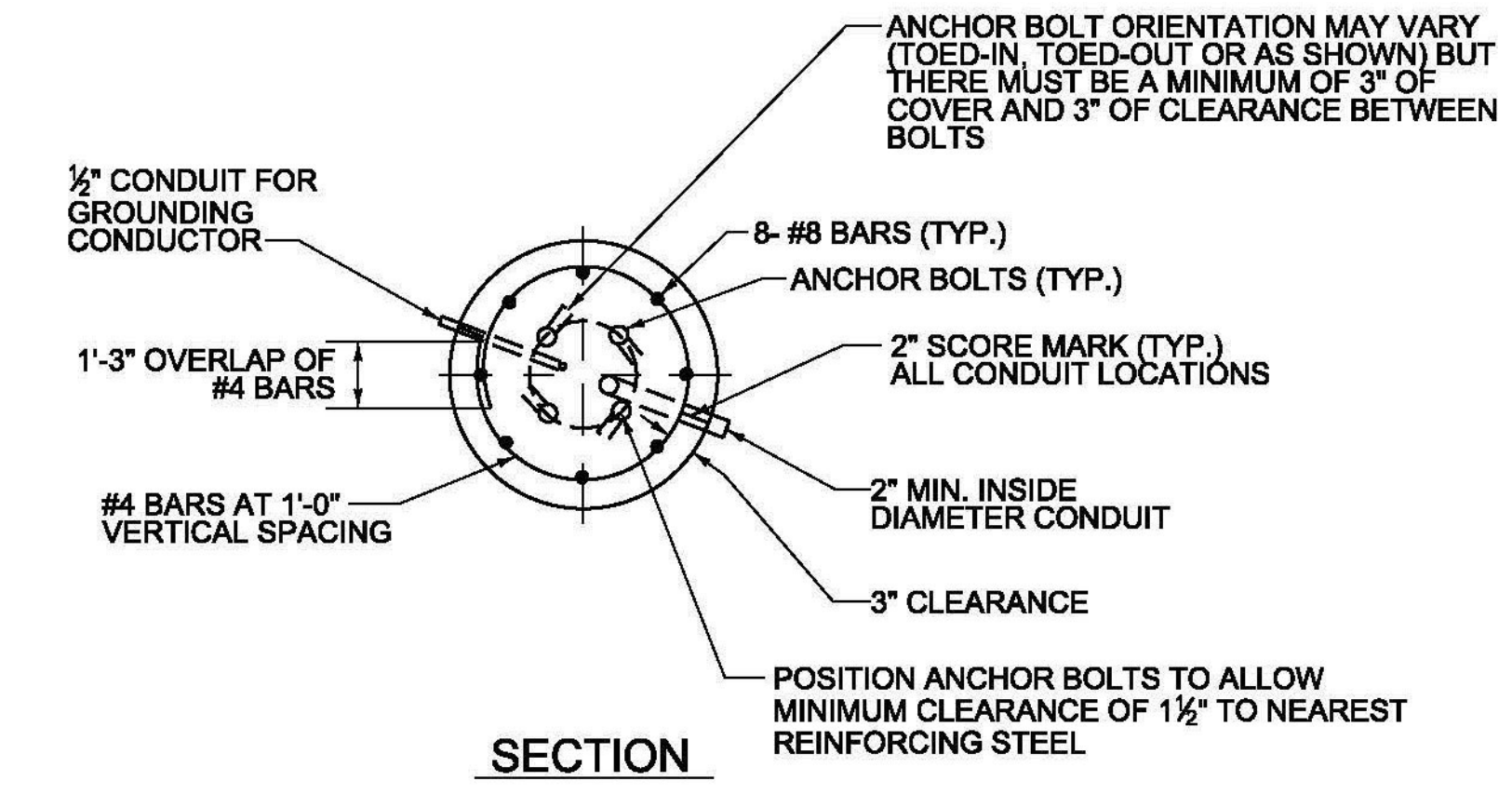
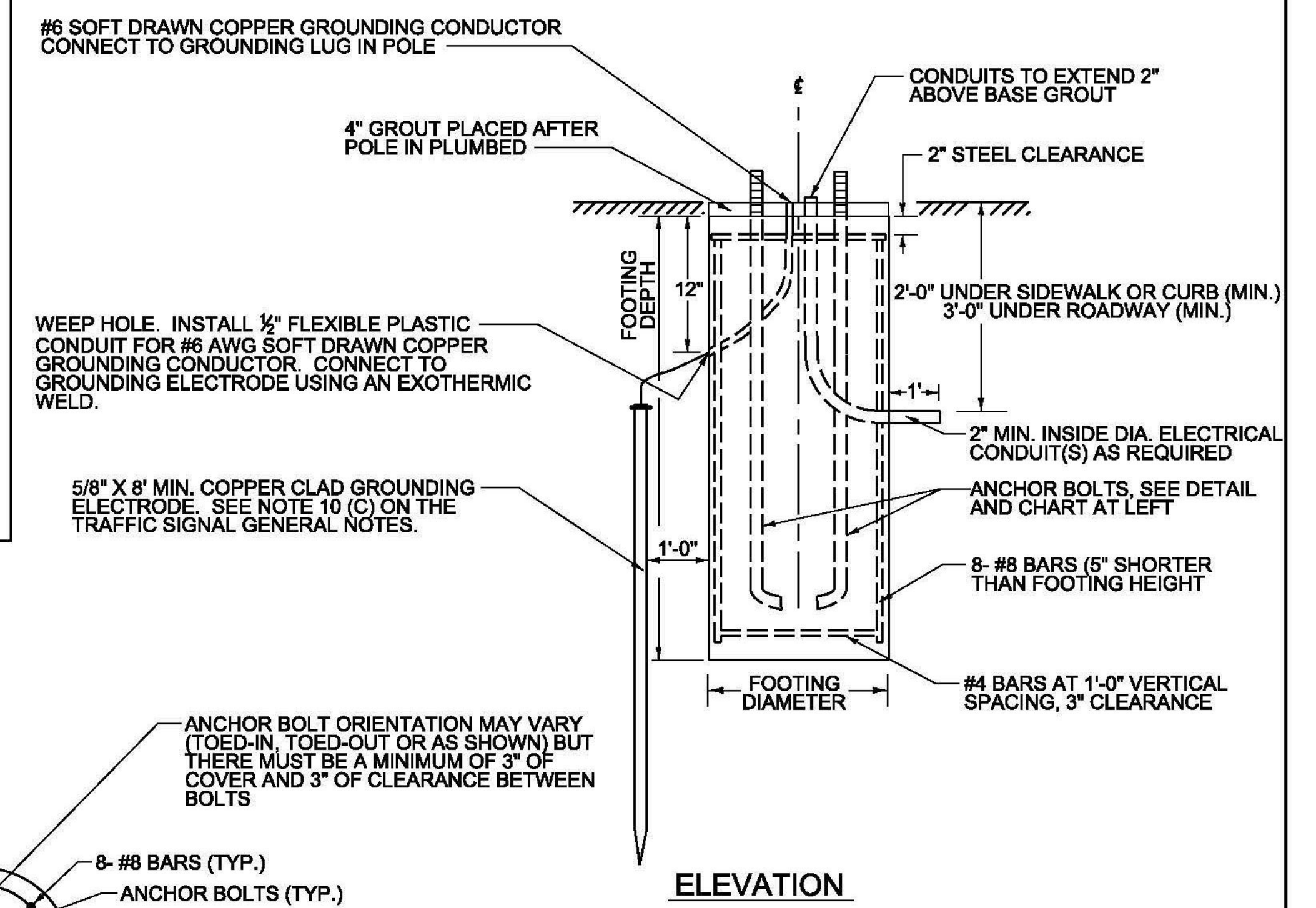
ANCHOR BOLT DETAIL		
SIZE	L (in.)	T (in.)
1 1/2" x 48"	42	8
1 1/2" x 60"	54	9
1 1/2" x 90"	84	9
2" x 96"	96	9

4" X 4" X 1" PLATE

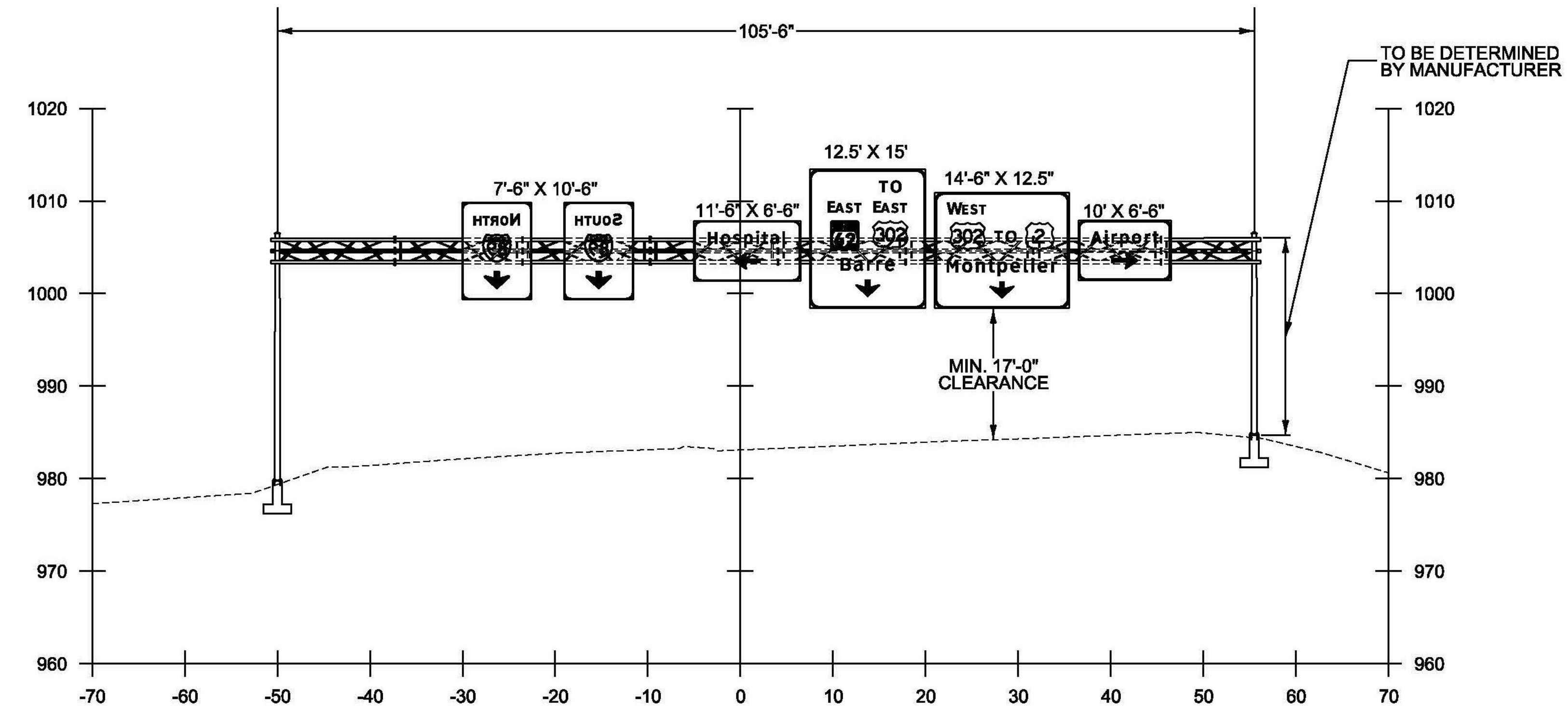
INTERRUPTED THREADS

1 1/2" - 1 3/4" BOLT

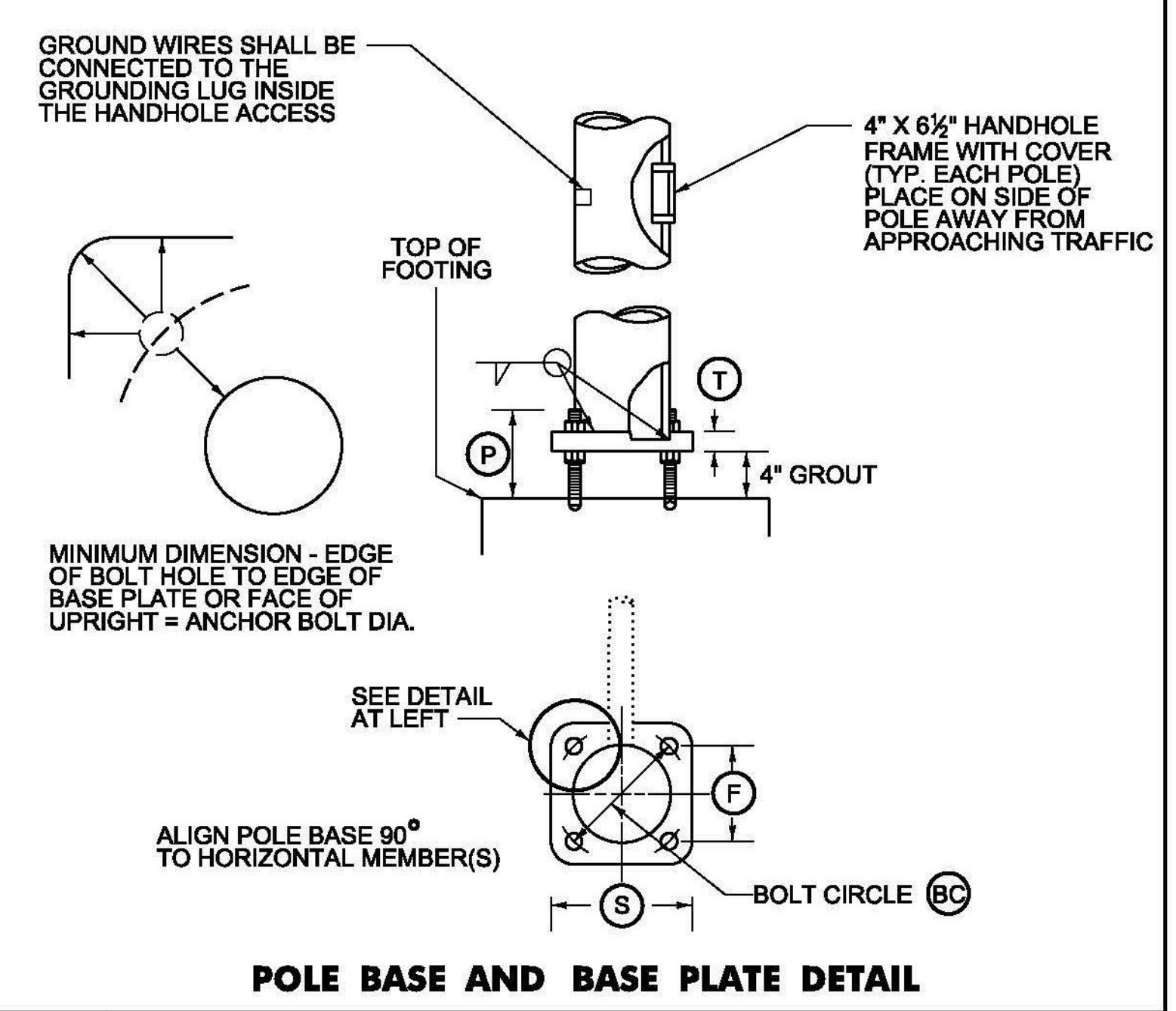
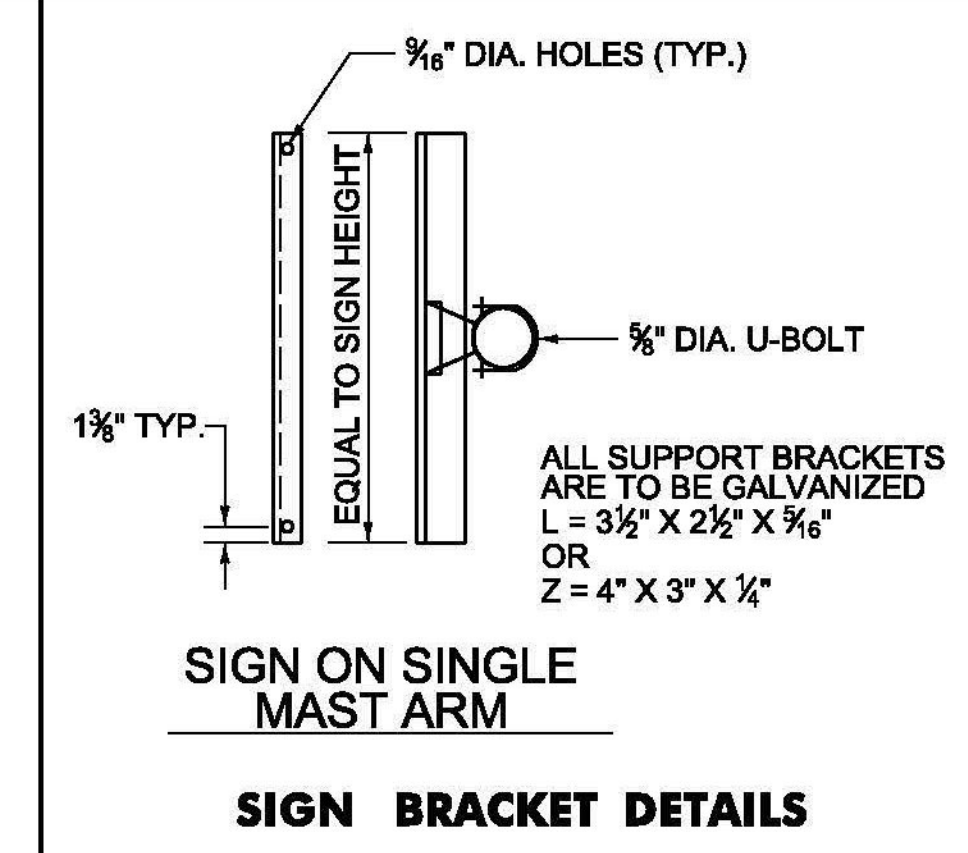
END DETAIL
2" ANCHOR BOLT ONLY



OVERHEAD TRAFFIC SIGN BRIDGE FOOTING DETAIL
(SPREAD FOOTINGS OR PILES ARE OPTIONAL)



OVERHEAD TRAFFIC SIGN BRIDGE - STA. 68+88.96, RT - STA. 68+89.05, LT
CROSS SECTION FOR ILLUSTRATIVE PURPOSES ONLY - SEE NOTE 2.
NOT TO SCALE



- NOTES**
- SEE TRAFFIC SIGNAL GENERAL NOTES FOR ADDITIONAL INFORMATION.
 - MANUFACTURER TO DETERMINE TYPE OF STRUCTURE REQUIRED.
 - MONOTUBES SHALL NOT BE USED FOR SIGNS OVER 10' HIGH.
 - MINIMUM CLEARANCE FROM SIGNS TO ANY TRAVEL LANE SHALL BE 17'.
 - CONTRACTOR SHALL VERIFY ALL GROUND ELEVATIONS.

PROJECT NAME: BERLIN
PROJECT NUMBER: STPG SGNL(40)

FILE NAME: sb_de101.dgn
PROJECT LEADER: P. COBURN
DESIGNED BY: T. SISSON
SIGN BRIDGE DETAIL SHEET

PLOT DATE: 10/20/2014
DRAWN BY: T. SISSON
CHECKED BY: M. LACROIX
SHEET 71 OF 123