

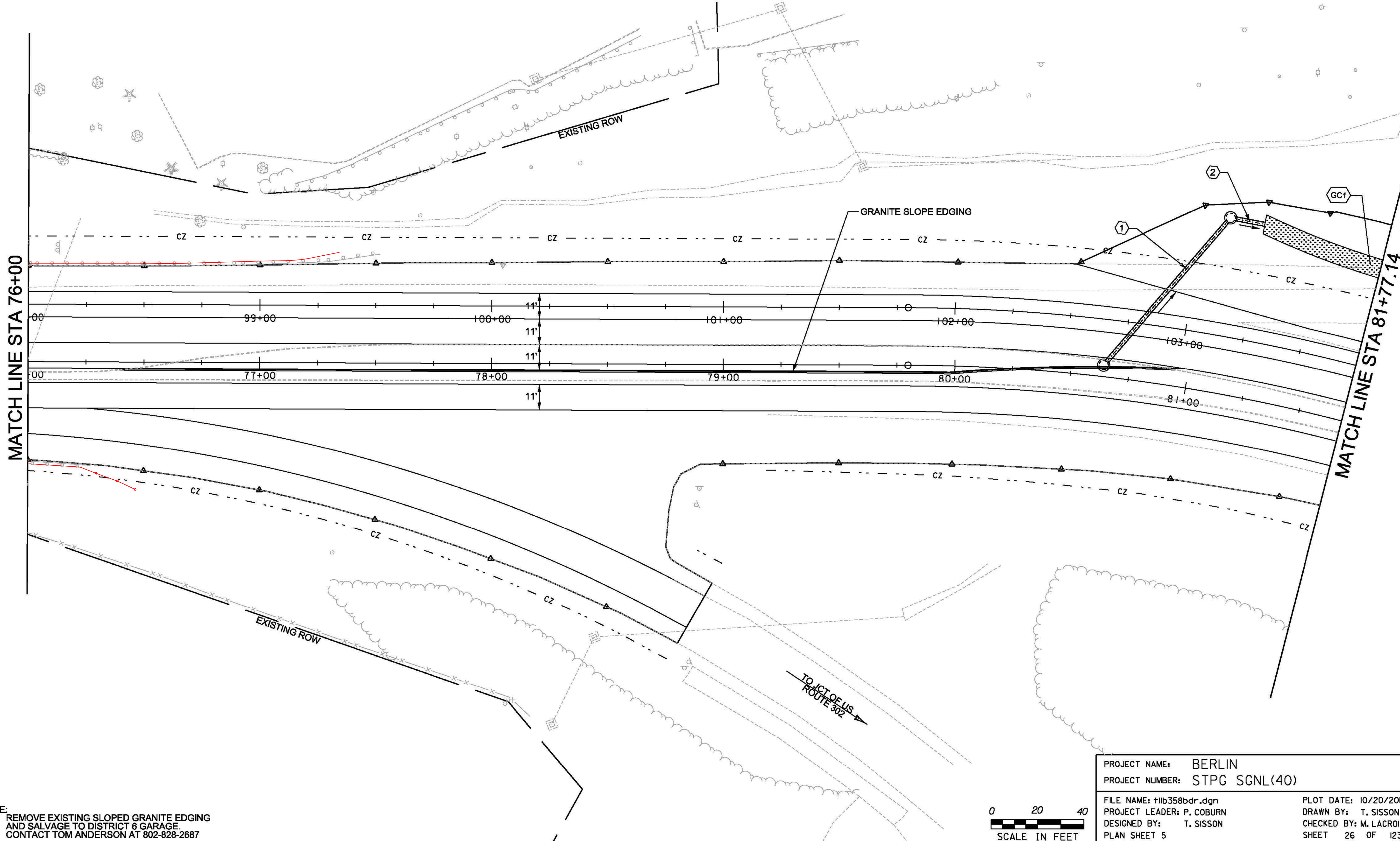
GRANITE SLOPE EDGING
 STA. 76+41, RT. - STA. 80+94, LT.
 REMOVAL OF EXISTING CURB
 STA. 76+44, RT. - STA. 80+93, LT. - 449 LF

MANUFACTURED TERMINAL SECTION FLARE
 STA 76+18 RT ~ STA 76+55.5 RT
 STA 77+12.5 LT ~ STA 77+50 LT

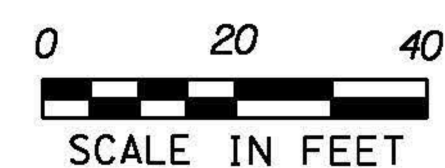
- ① STA. 102+67, 19.8' RT. - STA. 103+11, 51.0' LT.
 INSTALL NEW 84" X 18" CPEP(SL)
 INV. IN = 910.00', INV. OUT = 905.00'
 INSTALL NEW 4" DIA. CATCH BASIN (CB-1) AT 102+67 RT.
 RIM ELEV. = 917.37'; NEW CAST IRON GRATE, TYPE D
- ② STA. 103+11, 51.0' LT. - STA. 103+25, 50.9' LT.
 INSTALL NEW 15' X 18" CPEP(SL)
 INV. IN = 904.13', INV. OUT = 904.00'
 INSTALL NEW 4" DIA. MANHOLE (MH-2) AT 103+11 RT.
 RIM ELEV. = 909.13'; NEW CAST IRON COVER
 INSTALL NEW END SECTION (CPEPES) AT OUTLET, 103+25 LT.

GC1 STA. 103+25, LT. - STA. 103+75, LT.
 CONSTRUCT 248' GRASS CHANNEL
 AVERAGE LONGITUDINAL SLOPE = 3.6%

619.17 - YIELDING MARKER POST
 STA. 103+11, LT (MH-2)



NOTE:
 REMOVE EXISTING SLOPED GRANITE EDGING
 AND SALVAGE TO DISTRICT 6 GARAGE.
 CONTACT TOM ANDERSON AT 802-828-2687



PROJECT NAME: BERLIN	PLOT DATE: 10/20/2014
PROJECT NUMBER: STPG SGNL(40)	DRAWN BY: T. SISSON
FILE NAME: t11b358bdr.dgn	CHECKED BY: M. LACROIX
PROJECT LEADER: P. COBURN	SHEET 26 OF 123
DESIGNED BY: T. SISSON	
PLAN SHEET 5	