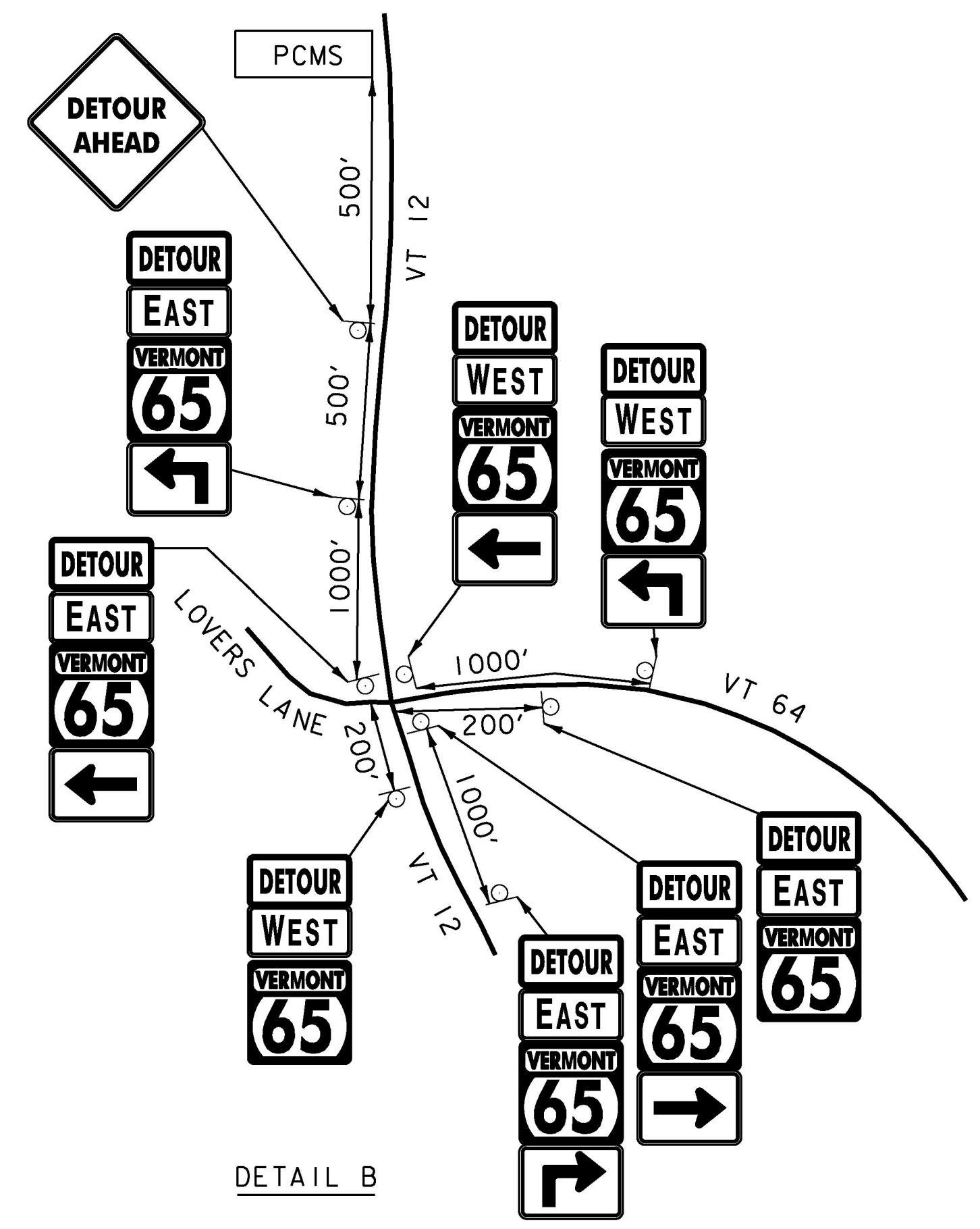
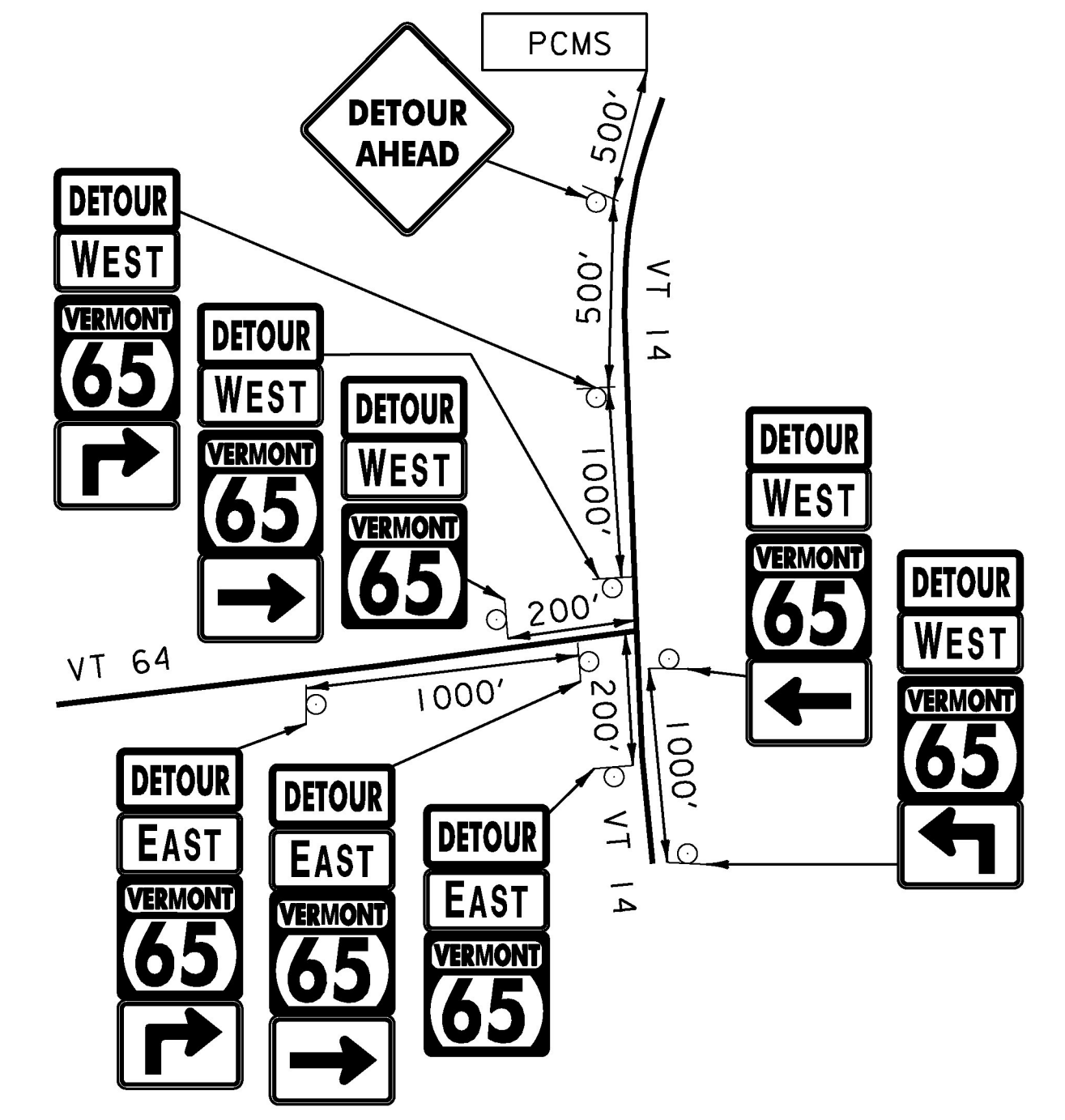


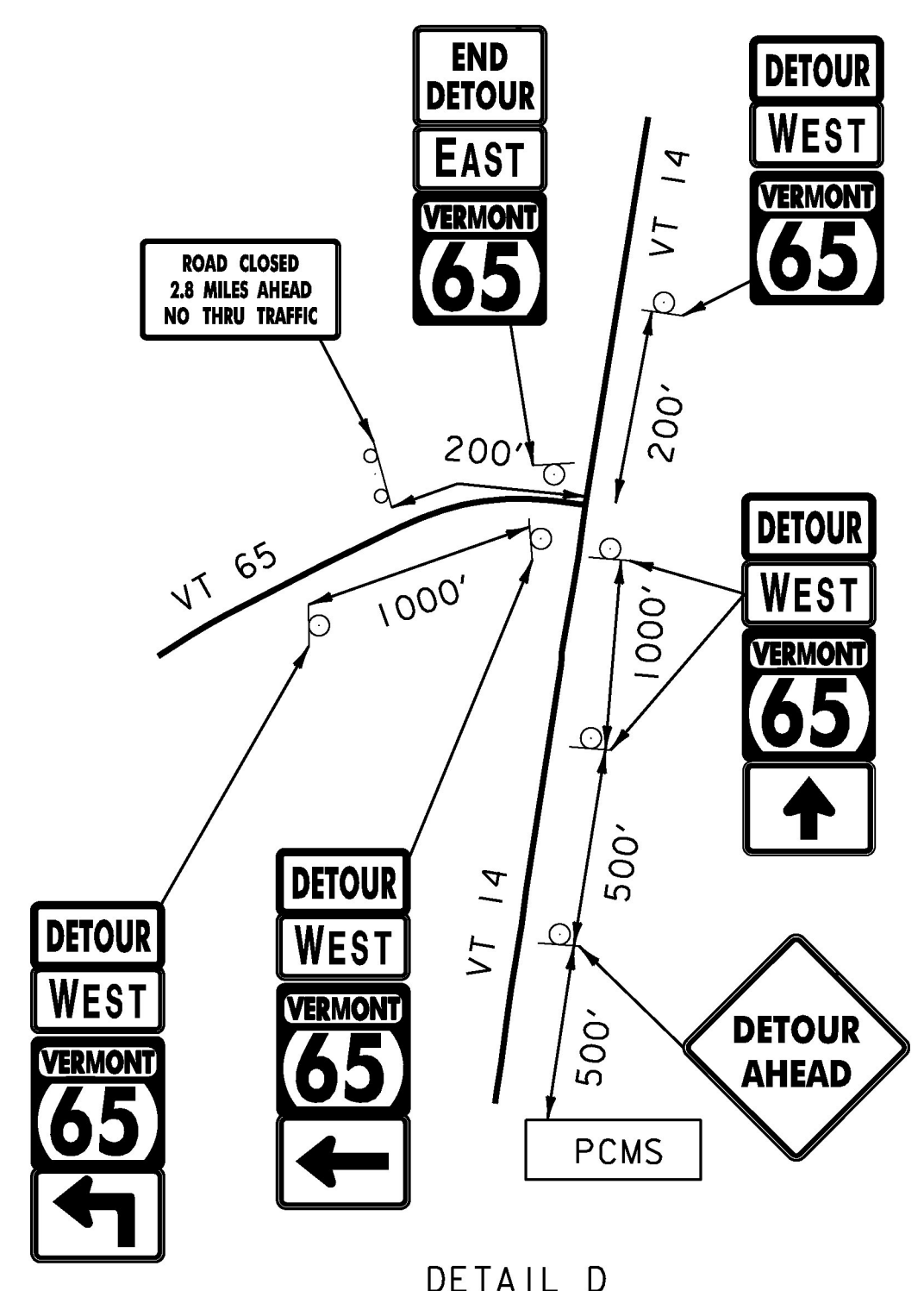
DETAIL A



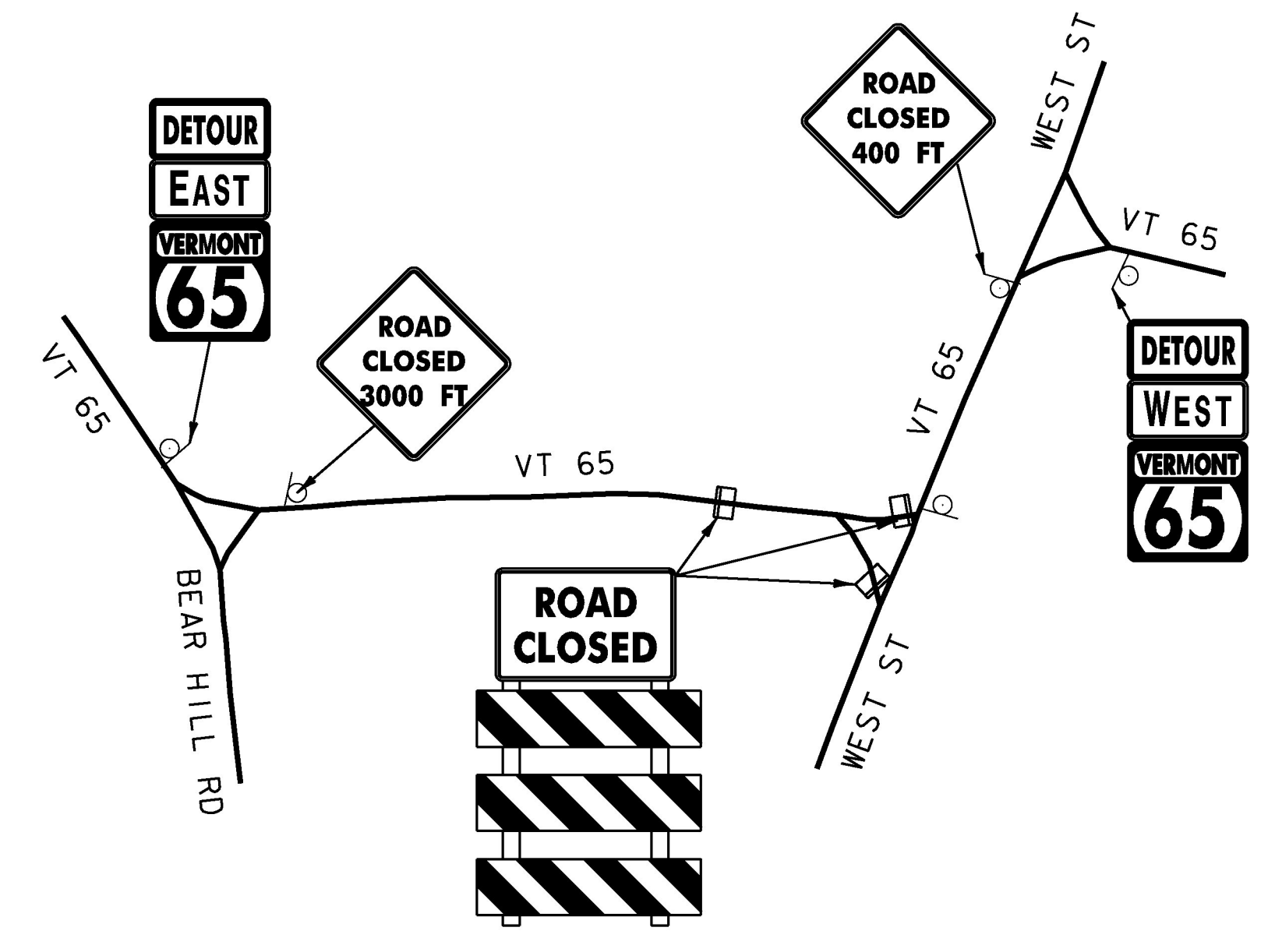
DETAIL B



DETAIL C



DETAIL D



DETAIL E

NOTES:

1. ALL COSTS OF INSTALLING, MAINTAINING AND REMOVING THE SIGNS AND BARRICADES IN THIS TRAFFIC CONTROL PLAN AS NECESSARY TO MEET PROJECT CONDITIONS WILL BE INCLUDED IN THE UNIT PRICE BID FOR THE CONTRACT ITEM 641.10 "TRAFFIC CONTROL".
2. ALL TRAFFIC SIGNS SHALL CONFORM TO THE MANUAL ON UNIFORM TRAFFIC CONTROL DEVICES (MUTCD) 2009 EDITION.
3. "ROAD CLOSED" SIGNS SHALL BE MOUNTED AND MAINTAINED ON TYPE III BARRICADES.
4. TYPE III BARRICADES SHALL BE PLACED SO AS TO PHYSICALLY EXCLUDE TRAFFIC FROM THE ENTIRE ROADWAY WIDTH OR AT THE DISCRETION OF THE ENGINEER.
5. WHEN POSSIBLE LOCATE "ROAD CLOSED XXXX FT" SIGN NEAR A LOCATION WHERE DRIVERS CAN TURN AROUND.
6. WHERE POSSIBLE LOCATE THE DETOUR ROUTE MARKER ASSEMBLIES ADJACENT TO EXISTING ROUTE MARKER ASSEMBLIES.
7. SIGN SPACING IS FOR REFERENCE ONLY. FIELD ADJUSTMENTS WILL LIKELY BE NECESSARY, AS APPROVED BY THE ENGINEER.
8. EXISTING SIGNS IN CONFLICT WITH THIS DETOUR PLAN SHOULD BE COVERED WHEN NECESSARY, AS APPROVED BY THE ENGINEER.

PCMS = PORTABLE CHANGEABLE MESSAGE SIGN

PROJECT NAME:	BROOKFIELD
PROJECT NUMBER:	STP 2960(I)
FILE NAME:	z15v022cos.dgn
PROJECT LEADER:	C. LATHROP
DESIGNED BY:	S. SOLLA
DETOUR DETAIL SHEET I	
PLOT DATE:	4/26/2016
DRAWN BY:	S. SOLLA
CHECKED BY:	C. LATHROP
SHEET	198 OF 202

NOT TO SCALE