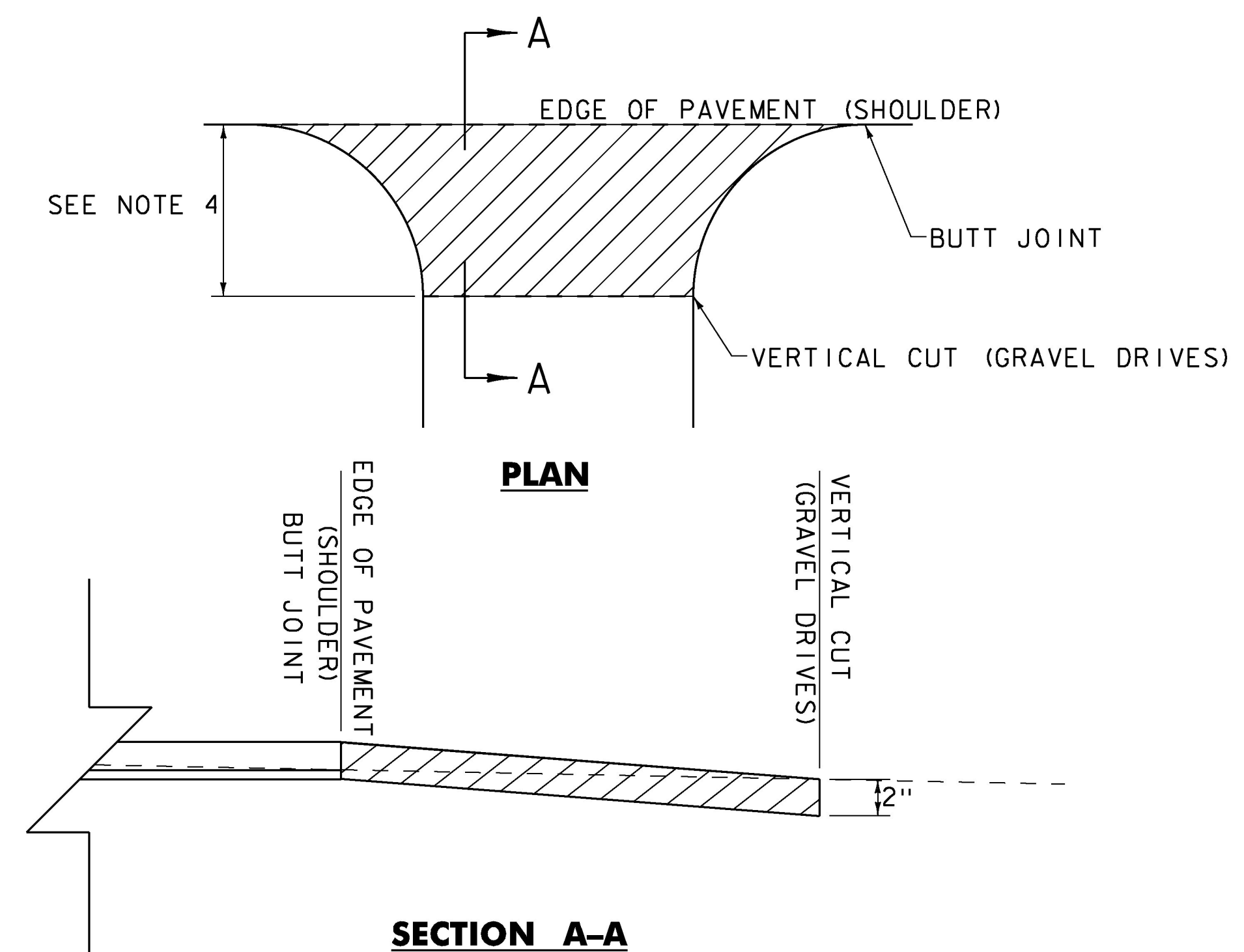
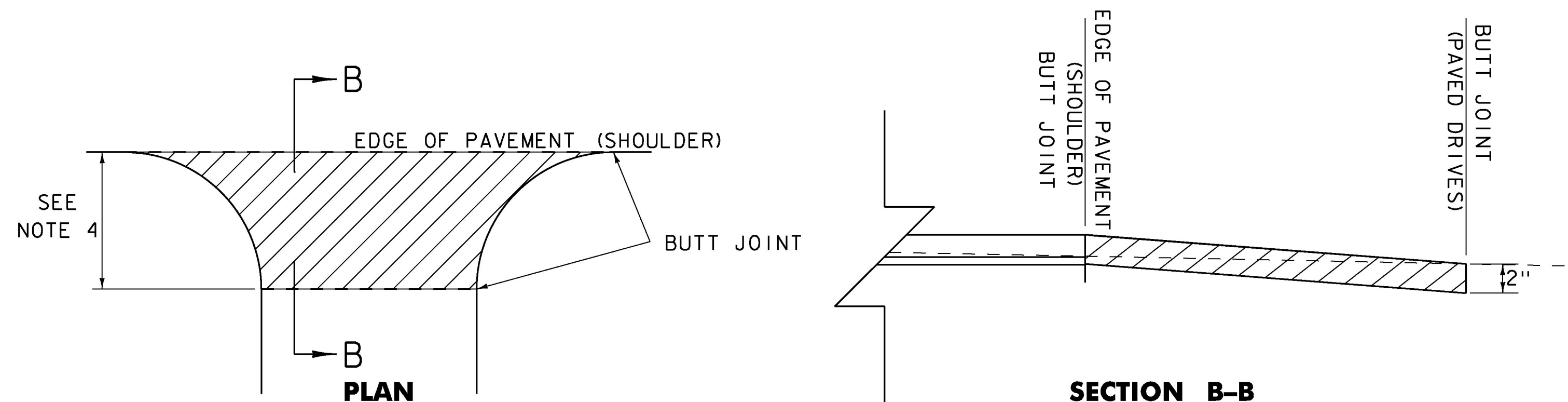


STATION	POSITION	TYPE	QUANTITY (SY)
<b>VT ROUTE 65 BROOKFIELD</b>			
MM 0.019	LT	GRAVEL	12.0
MM 2.812	LT	GRAVEL	6.0
MM 2.848	RT	GRAVEL	7.0
MM 2.900	RT	PAVED	28.0
MM 3.222	RT	GRAVEL	9.0
MM 3.239	RT	GRAVEL	9.0
MM 3.299	RT	GRAVEL	22.0
MM 3.354	LT	PAVED	18.0
MM 3.383	LT	GRAVEL	16.0
MM 3.414	RT	PAVED	10.0
MM 3.671	RT	PAVED	11.0
MM 3.832	LT	GRAVEL	5.0
MM 3.881	LT	GRAVEL	11.0
MM 3.881	RT	FIELD	4.0
MM 3.955	LT	GRAVEL	7.0
		SUBTOTAL =	175.0

STATION	POSITION	TYPE	QUANTITY (SY)
MM 4.002	LT	PAVED	9.0
MM 4.106	RT	GRAVEL	12.0
MM 4.219	RT	PAVED	8.0
MM 4.247	LT	GRAVEL	13.0
MM 4.286	LT	GRAVEL	14.0
MM 4.306	RT	GRAVEL	10.0
MM 4.332	LT	GRAVEL	7.0
MM 4.344	LT	GRAVEL	31.0
MM 4.496	RT	GRAVEL	16.0
MM 4.496	LT	FIELD	4.0
MM 4.598	LT	GRAVEL	8.0
MM 4.908	LT	GRAVEL	8.0
MM 4.991	LT	GRAVEL	16.0
MM 5.027	LT	GRAVEL	14.0
MM 5.061	RT	GRAVEL	11.0
		SUBTOTAL =	356.0
		ROUNDING =	9.0
		TOTAL =	365.0



**HANDWORK DETAILS FOR DRIVES - GRAVEL DRIVES**  
VT ROUTE 65



**HANDWORK DETAILS FOR DRIVES - PAVED DRIVES**  
VT ROUTE 65

**LEGEND**

ITEM 900.675 "SPECIAL PROVISION  
(HAND-PLACED BITUMINOUS CONCRETE MATERIAL, DRIVES)"

NOT TO SCALE

**NOTES:**

- PAVING LIFT SHALL BE A MINIMUM OF 1 1/2" AND A MAXIMUM OF 2".
- THE COST OF PLACING SUBBASE MATERIAL, CLEANING EXISTING PAVED SURFACES, INCLUDING POWER EQUIPMENT, AND FOR FILLING JOINTS, CRACKS AND HOLES WILL NOT BE PAID DIRECTLY BUT WILL BE CONSIDERED INCIDENTAL TO ITEM 900.675 "SPECIAL PROVISION (HAND-PLACED BITUMINOUS CONCRETE MATERIAL, DRIVES)".
- EXCAVATION OR FILL NEEDED TO ACHIEVE PROPER DRIVE SLOPES WILL NOT BE PAID DIRECTLY BUT WILL BE CONSIDERED INCIDENTAL TO ITEM 900.675 "SPECIAL PROVISION (HAND-PLACED BITUMINOUS CONCRETE MATERIAL, DRIVES)".
- FIELD DRIVES 2'-0"; RESIDENTIAL AND COMMERCIAL DRIVES 4'-0"; OR AS DIRECTED BY THE ENGINEER.

PROJECT NAME:	BROOKFIELD	PLOT DATE:	4/26/2016
PROJECT NUMBER:	STP 2960(I)	DRAWN BY:	O. DALMER
FILE NAME:	z15v023de+.dgn	CHECKED BY:	C. LATHROP
PROJECT LEADER:	C. LATHROP	HANDWORK DETAILS FOR DRIVES SHEET 1	SHEET 161 OF 202
DESIGNED BY:	S. SOLLA		