

GPS CONTROL POINTS

HVCTRL #1

I 89 MILE 37 AZ MK
 NORTH = 565959.2810
 EAST = 1613008.8900
 ELEV. = 1495.330

GENERAL LOCATION, BROOKFIELD, VT.

THE MARK IS SET FLUSH WITH GROUND SURFACE IN THE TOP OF A 0.6 M X 0.5 M ROCK OUTCROP. IT IS ABOUT 3 METERS SOUTH OF A PROMINENT QUARTZ ROCK ON THE I-89 NORTHBOUND SHOULDER. IT IS ABOUT 0.7 MI NORTH OF THE VT ROUTE 65 BRIDGE OVER THE INTERSTATE. IT IS 12.1 M EAST OF AND ABOUT 0.3 M HIGHER THAN THE I-89 NORTHBOUND EAST EDGE OF PAVEMENT, 33.4 M SOUTH OF MILE MARKER 38.55, 23.3 M SSW OF A 40 CM PINE WITH TRIANGULAR BLAZE, AND 11.7 M WNW OF THE INTERSTATE RIGHT-OF-WAY FENCE.

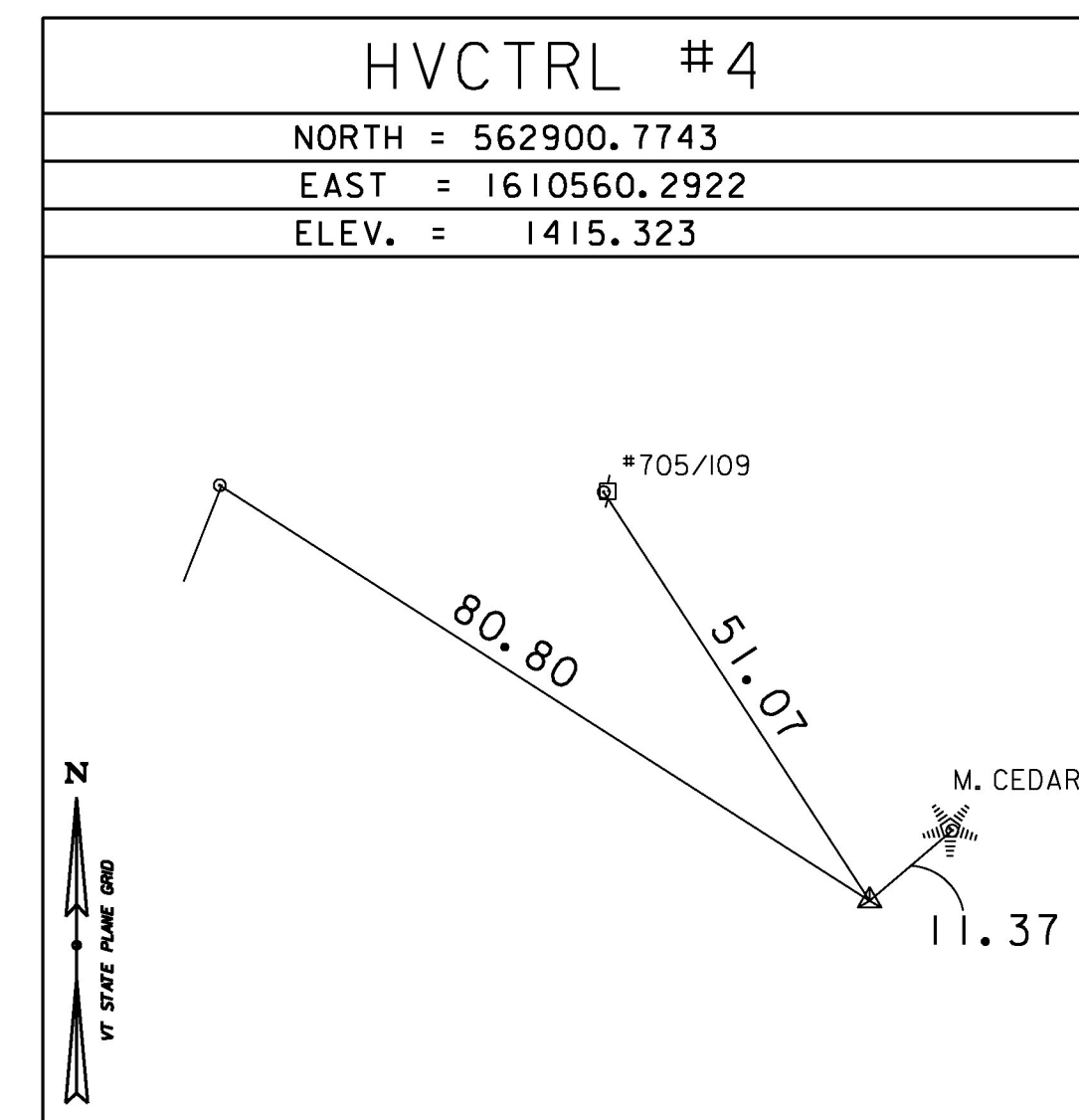
HVCTRL #2

I 89 MILE 37
 NORTH = 559671.0230
 EAST = 1610545.7390
 ELEV. = 1454.070

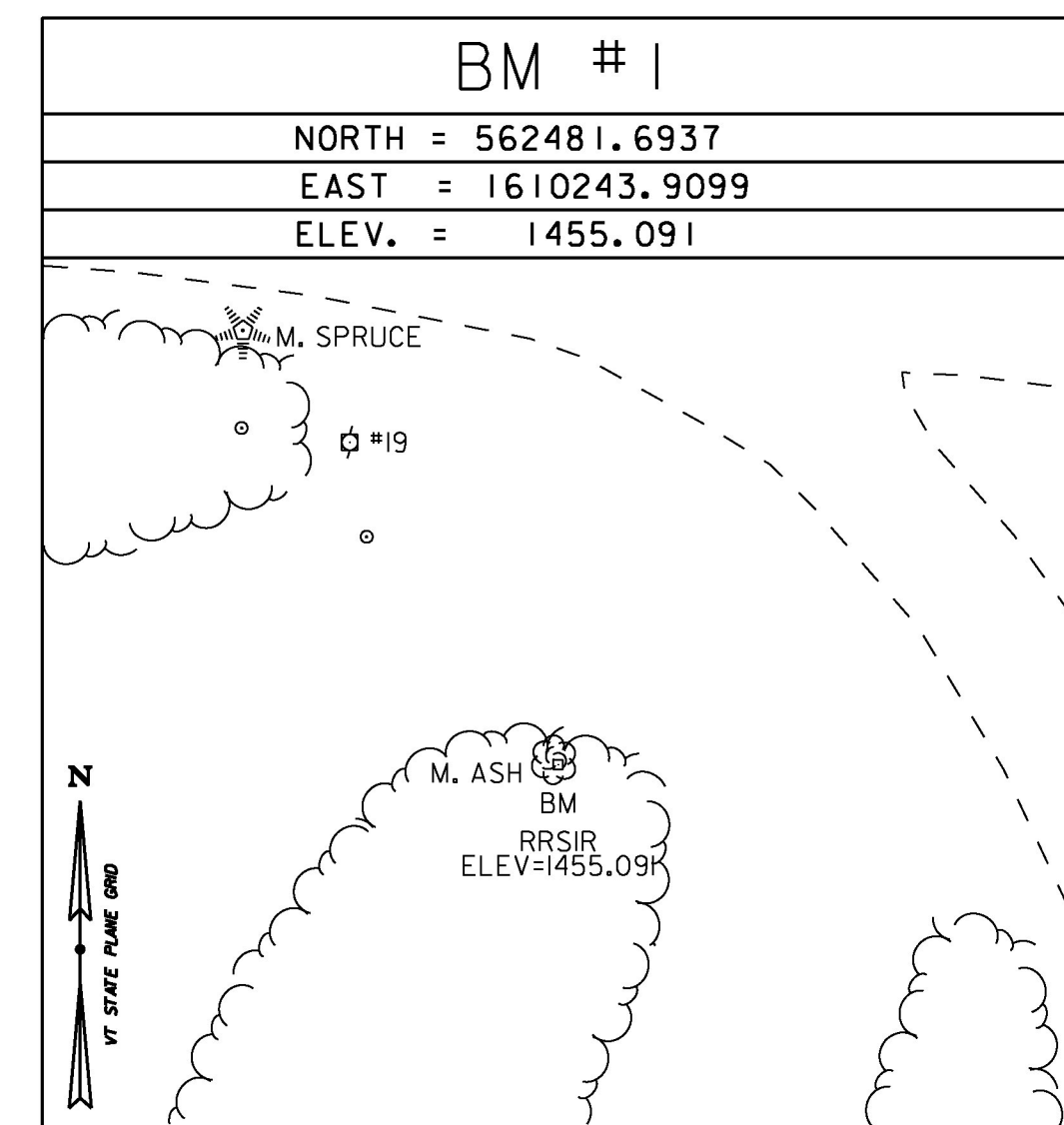
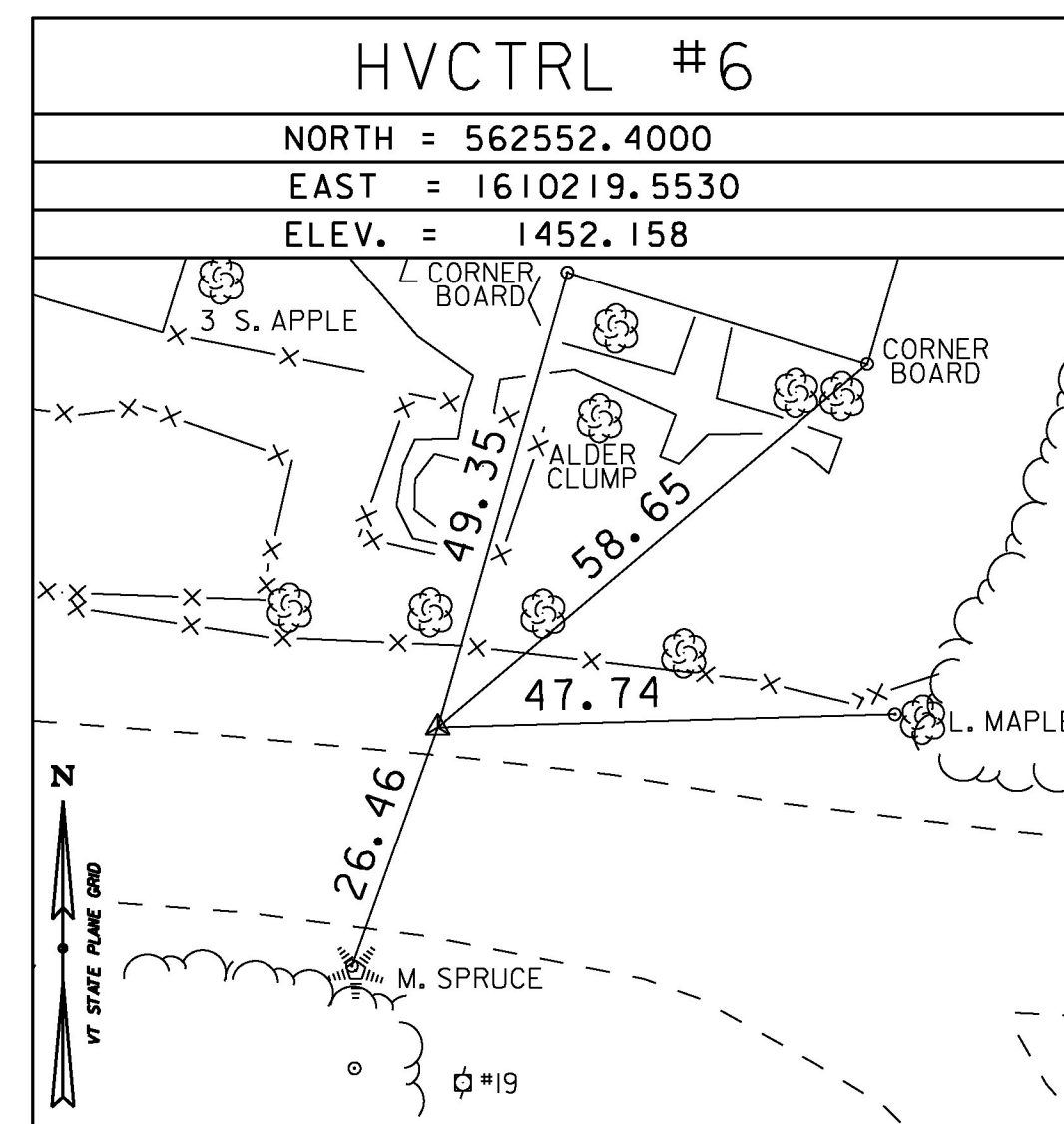
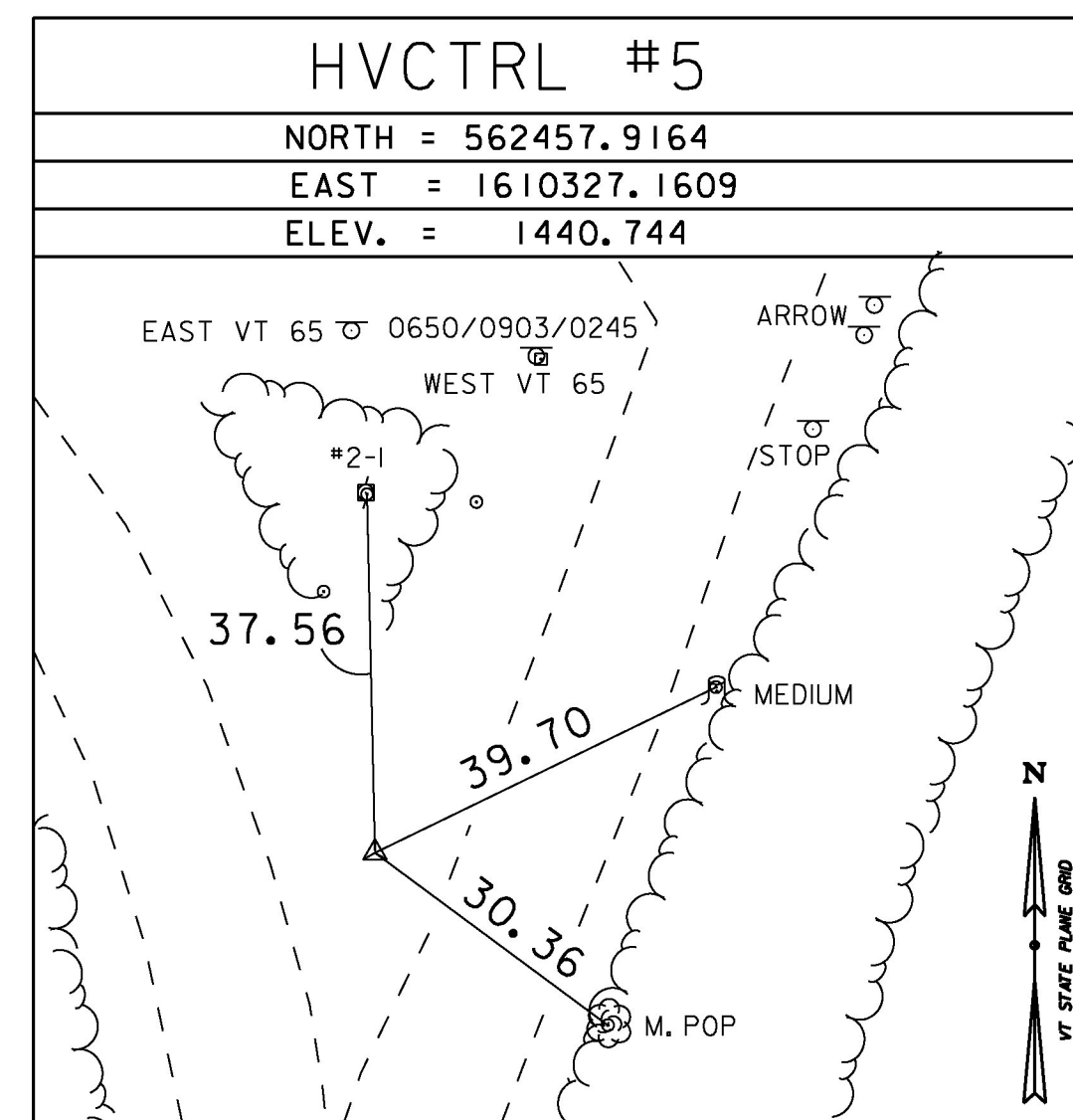
GENERAL LOCATION, BROOKFIELD, VT.

THE MARK IS SET IN THE TOP OF A MASSIVE ROCK OUTCROP IN THE INTERSTATE 89 NORTHBOUND MEDIAN. IT IS ABOUT 0.6 MI SOUTH OF THE VT ROUTE 65 BRIDGE OVER THE INTERSTATE. IT IS 12.4 M WEST OF AND ABOUT 0.5 M HIGHER THAN THE I-89 NORTHBOUND WEST EDGE OF PAVEMENT, 35.4 M SOUTH OF A 20 CM FIR WITH TRIANGULAR BLAZE, 15.9 M EAST-SOUTHEAST OF A 25 CM CHERRY WITH TRIANGULAR BLAZE, AND 15.6 M NORTHEAST OF A 20 CM BIRCH WITH TRIANGULAR BLAZE.

TRAVERSE TIES



TRAVERSE COMPLETED BY R. GILMAN P.C. & C. CYR ON 12/18/2015



NORTH =
EAST =
ELEV. =

ALIGNMENT TIES

NORTH =
EAST =
ELEV. =

NORTH =
EAST =
ELEV. =

NORTH =
EAST =
ELEV. =

NORTH =
EAST =
ELEV. =

NORTH =
EAST =
ELEV. =

DATUM

VERTICAL	NAVD 88
HORIZONTAL	NAD 83 (2011)
ADJUSTMENT	COMPASS

PROJECT NAME:	BROOKFIELD
PROJECT NUMBER:	STP 2960(I)
FILE NAME:	X15V023TL.DGN
PROJECT LEADER:	J. HARRINGTON
DESIGNED BY:	VTRANS
TIE SHEET	
PLOT DATE:	4/26/2016
DRAWN BY:	C. CYR
CHECKED BY:	G. HITCHCOCK
SHEET	155 OF 202