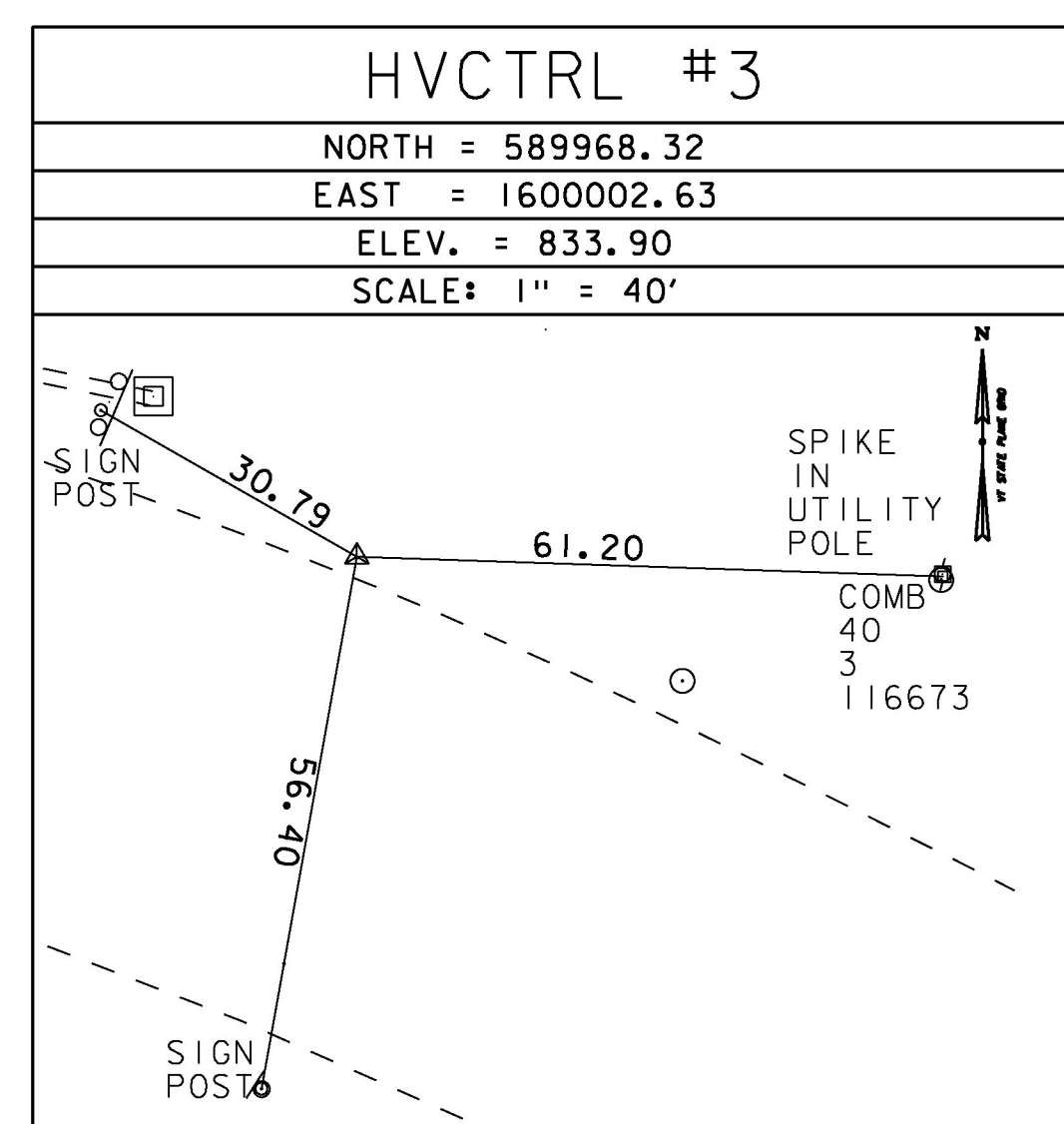
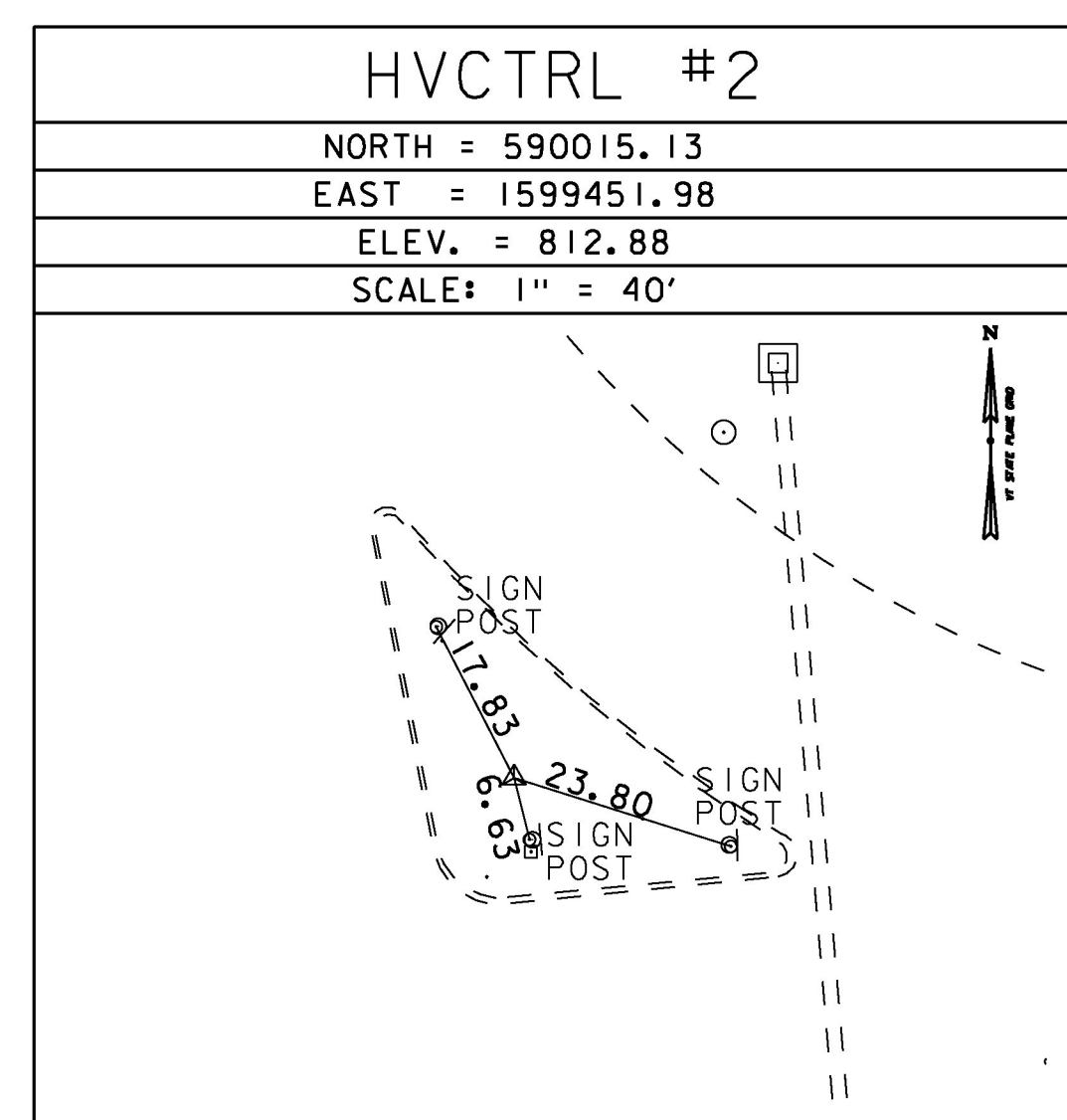
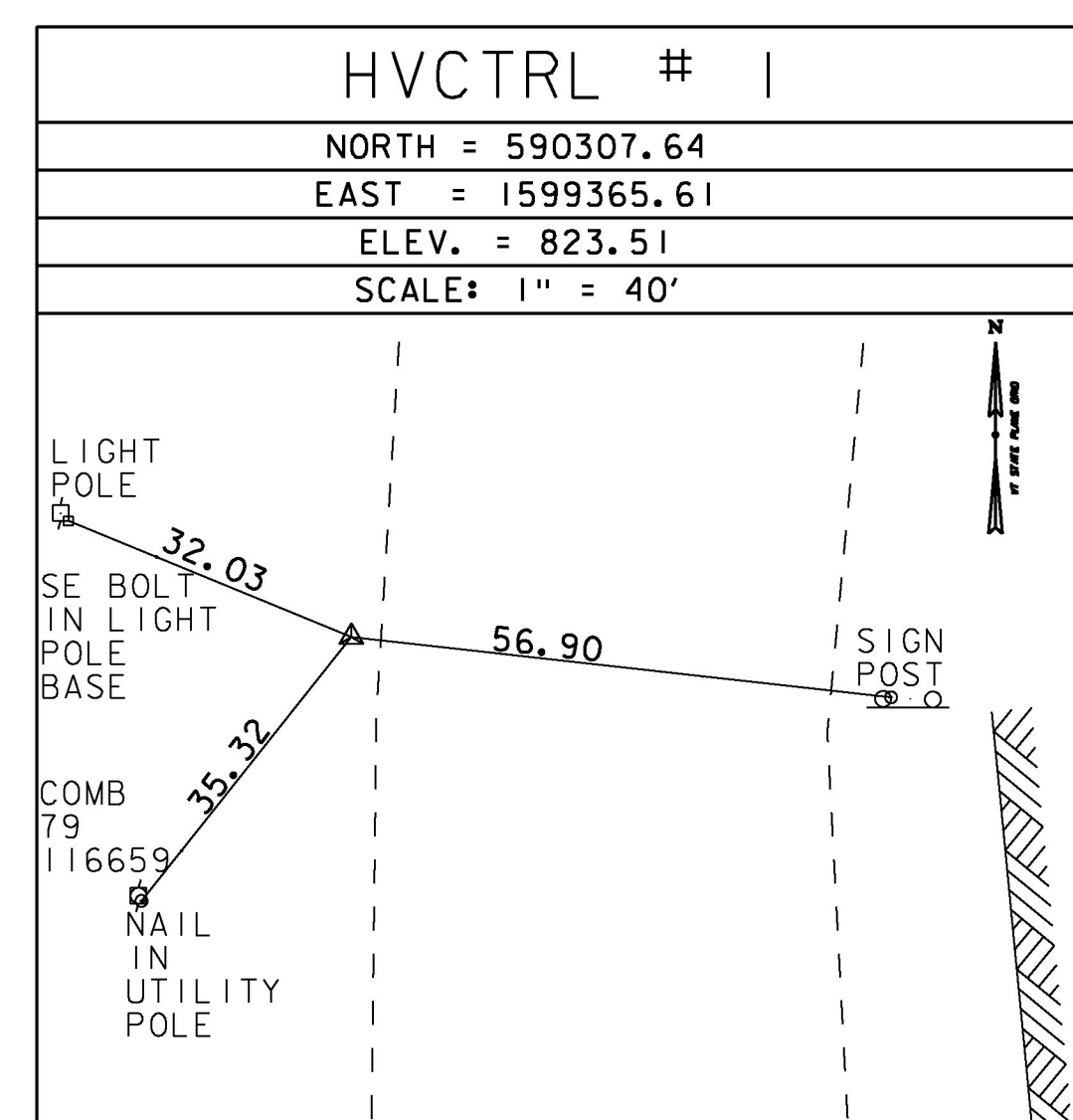


CORS REFERENCE

STATE PLANE COORDINATES WERE DERIVED THROUGH THE USE OF RTK
GPS UTILIZING THE VERMONT CORS SYSTEM
POINTS ONE AND TWO WERE OCCUPIED WITH LEICA GS15 GNSS UNITS,
POINT 3 WAS CREATED WITH A LEICA TS12
ROBOTIC TOTAL STATION

VCAP
NORTH = 642,229.41
EAST = 1,618,836.28
ELEV. = 617.5
This is a GPS Continuously Operating Reference Station.
VERMONT CAPITAL CORS ARP
CORS ID - VCAP
PID - AF9563
STATE/COUNTY- VT/WASHINGTON
COUNTRY - US
USGS QUAD - MONTPELIER (1968)
U.S. NATIONAL GRID SPATIAL ADDRESS: 18TXQ9297703812(NAD 83)
MARKER: STATION IS THE ANTENNA REFERENCE POINT OF THE GPS ANTENNA

TRAVERSE TIES



DATUM	
VERTICAL	NAVD 88
HORIZONTAL	NAD 83 (2011)
CLOSURE	N/A

PROJECT NAME:	NORTHFIELD-WILLIAMSTOWN		
PROJECT NUMBER:	STP 2959(I)		
FILE NAME:	z15v022+1.dgn	PLOT DATE:	4/26/2016
PROJECT LEADER:	C. LATHROP	DRAWN BY:	G. STOCKMAN
DESIGNED BY:	G. STOCKMAN	CHECKED BY:	C. LATHROP
TIE SHEET		SHEET	82 OF 202