

GPS/NGS CONTROL POINTS

**BENNINGTON CORS ARP**

PID DK8255  
 N = 140182.53  
 E = 1452827.06  
 ELLIP HEIGHT = 603.37

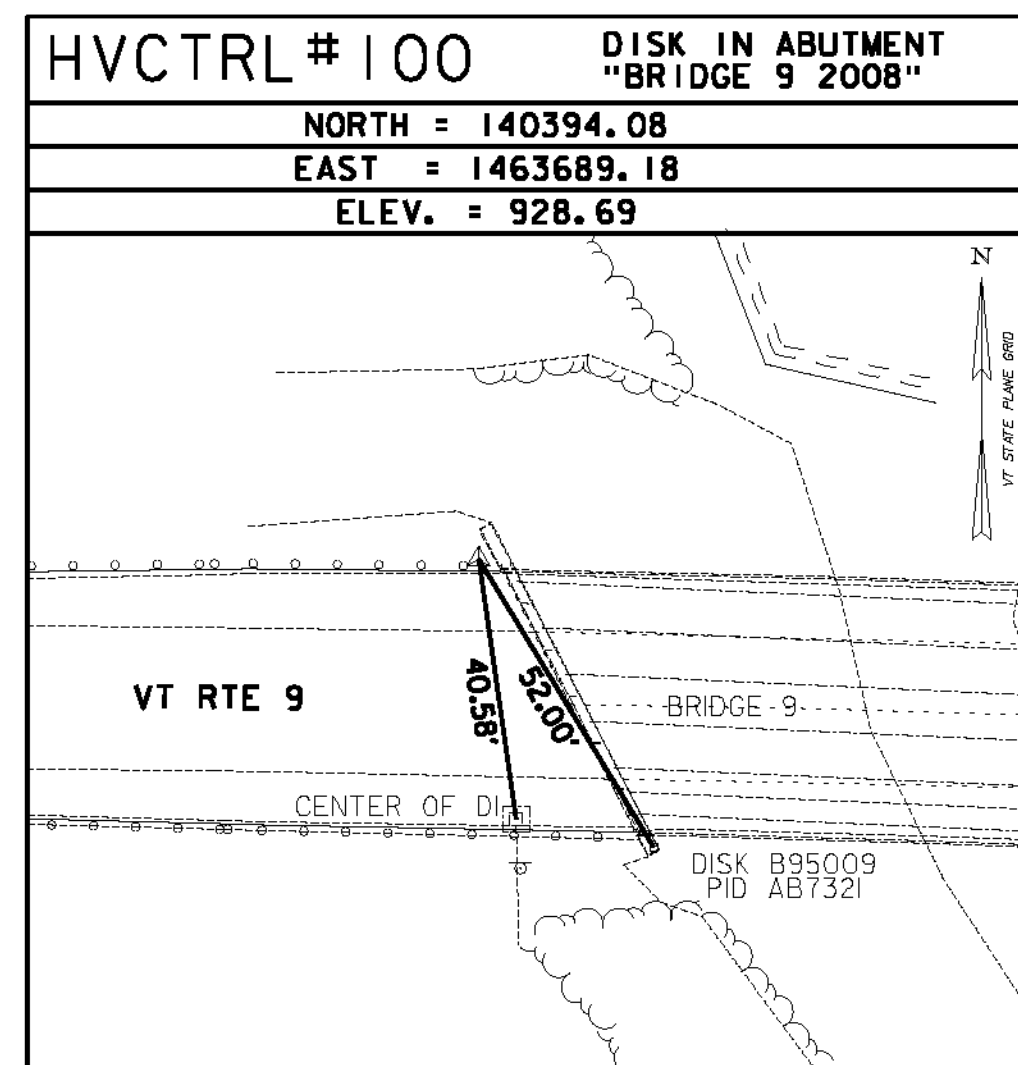
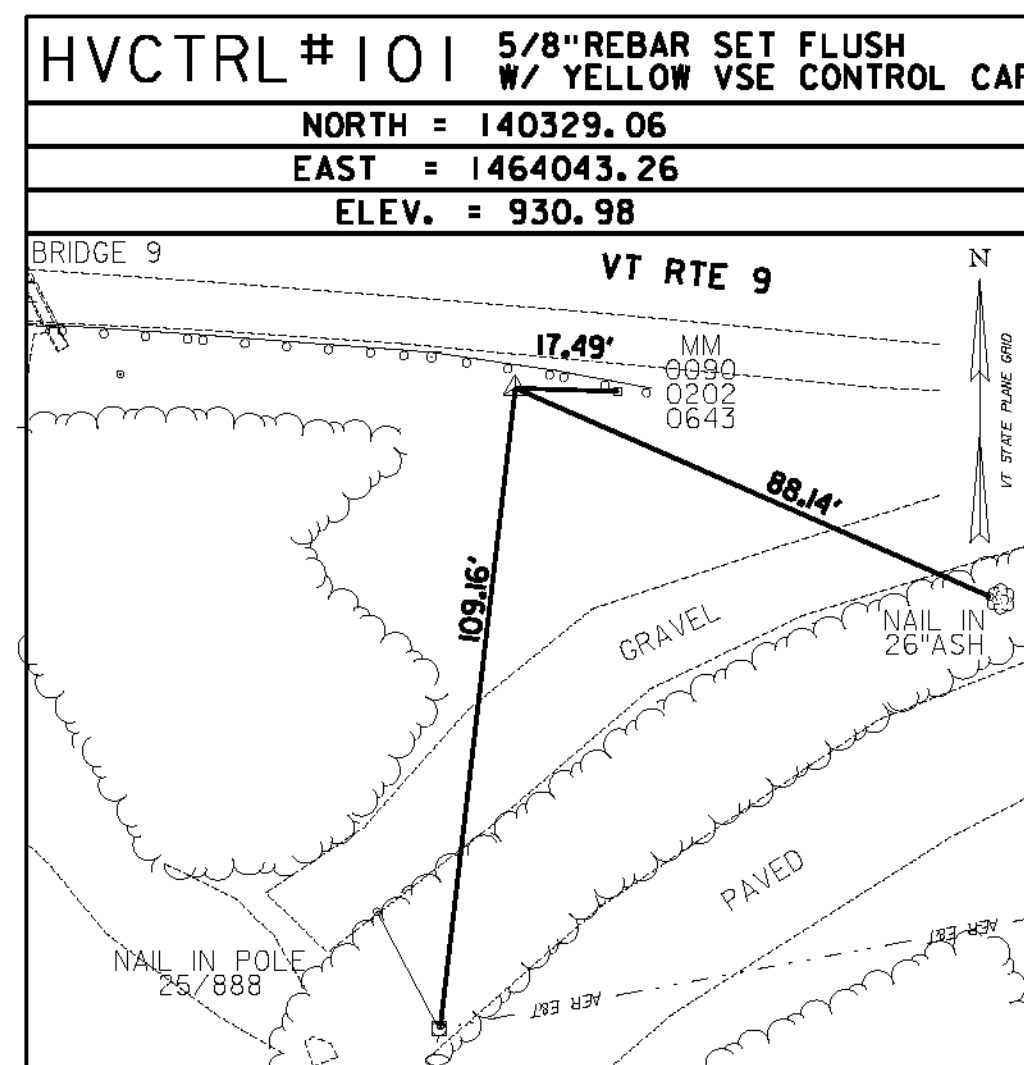
STATION IS A GPS CONTINUOUSLY OPERATING REFERENCE STATION. STATION IS THE ANTENNA REFERENCE POINT OF THE GPS ANTENNA. LOCATED AT THE BENNINGTON, VERMONT FIRE DEPARTMENT, THE MONUMENT IS ATTACHED TO A THREE STORY CONCRETE & BRICK BUILDING WITH A 10 FT CONCRETE FOUNDATION BUILT IN 1998. THE MAST IS A 1.75 INCH DIA. GALV PIPE THAT IS 108 INCHES LONG. THE MAST IS ATTACHED TO A STEEL MOUNTING FRAME WITH THREE ATTACHMENTS CONSISTING OF 3/8 INCH SS THROUGH BOLTS. THE MOUNTING FRAME IS ATTACHED TO THE BUILDING USING 6 ATTACHMENT POINTS. ALL 6 ATTACHMENTS ARE THROUGH BOLTED AND CONSIST OF 1/2 INCH SS THREADED ROD AND NUTS.

**B95009**

PID AB7321  
 N = 140349.66  
 E = 1463716.18  
 ELEVATION = 929.01

TO REACH FROM THE INTERSECTION OF U.S. ROUTE 7 AND VT ROUTE 9 IN BENNINGTON, GO EAST ALONG VT ROUTE 9 FOR 2.0 MI (3.2 KM) TO THE WEST END OF THE VT ROUTE 9 BRIDGE OVER THE ROARING BRANCH AND THE MARK ON THE RIGHT IN THE TOP OF THE ABUTMENT AT THE SOUTHWEST CORNER OF THE BRIDGE. THE MARK IS 0.2 M (0.7 FT) WEST OF THE EAST FACE OF THE ABUTMENT, 0.25 M (0.82 FT) NORTH OF THE SOUTH EDGE OF THE ABUTMENT, AND 0.8 M (2.6 FT) SOUTH OF THE NORTH FACE OF THE BRIDGE CURB. THE MARK IS A SURVEY DISK STAMPED B95009.

TRAVERSE TIES



• MAIN TRAVERSE COMPLETED: JANUARY 5, 2012 BY VSE, T. SCARZELLO-PC, T. YEFCHAK

ALIGNMENT TIES

NORTH =
EAST =

NORTH =
EAST =

NORTH =
EAST =

NORTH =
EAST =

NORTH =
EAST =

<b>DATUM</b>	
VERTICAL	NAVD 88 FT
HORIZONTAL	NAD 83(CORS) sFT
ADJUSTMENT	LSQ



**TIE SHEET**

PROJECT NAME: BENNINGTON  
 PROJECT NUMBER: ER BHF 010-I(45)

FILE NAME: z1lb326\_blt.dgn  
 PROJECT LEADER: D.E.G.  
 DESIGNED BY: K.J.K.  
 DWG. NO.: z1lb326blt.i

PLOT DATE: 8/21/2012  
 DRAWN BY: M.E.D.  
 CHECKED BY: D.E.G.  
 SHEET 6 OF 40