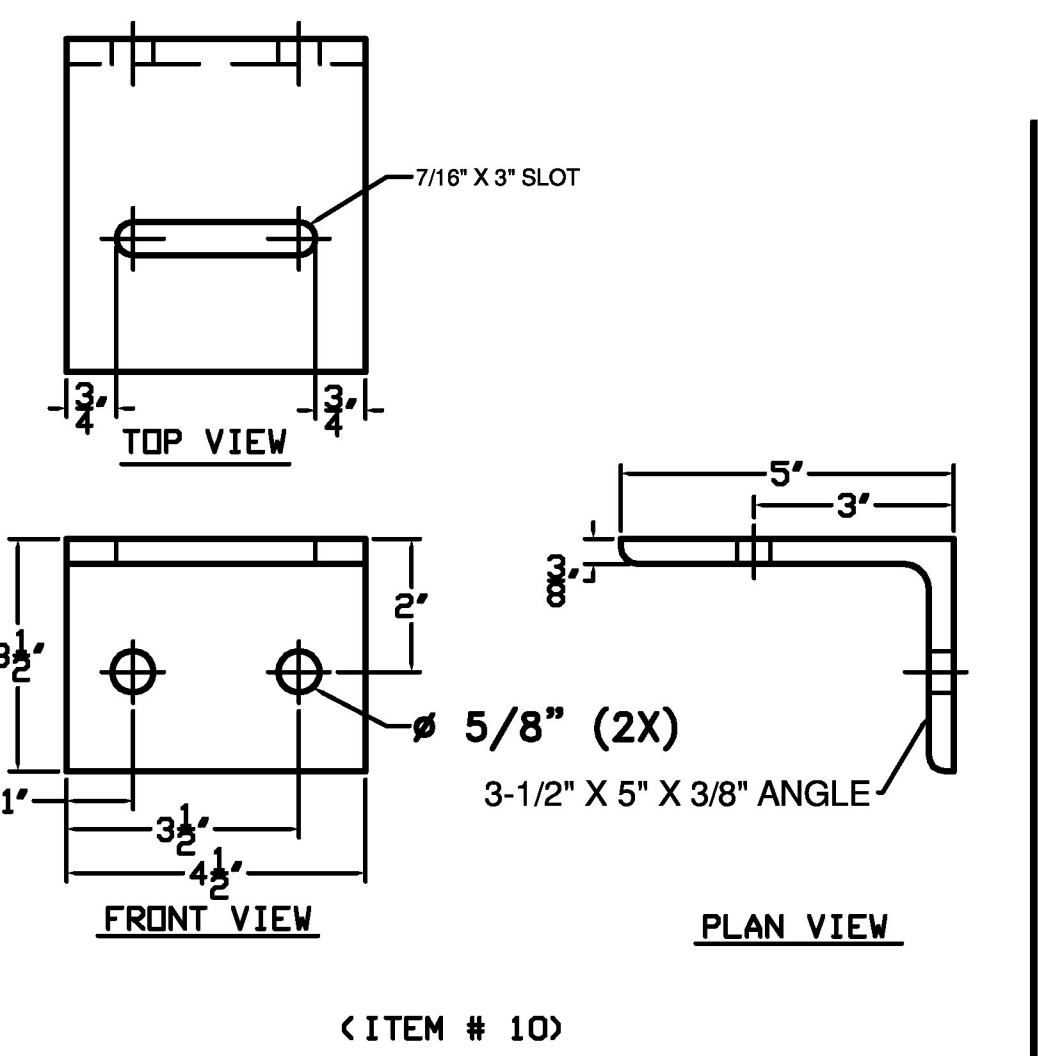


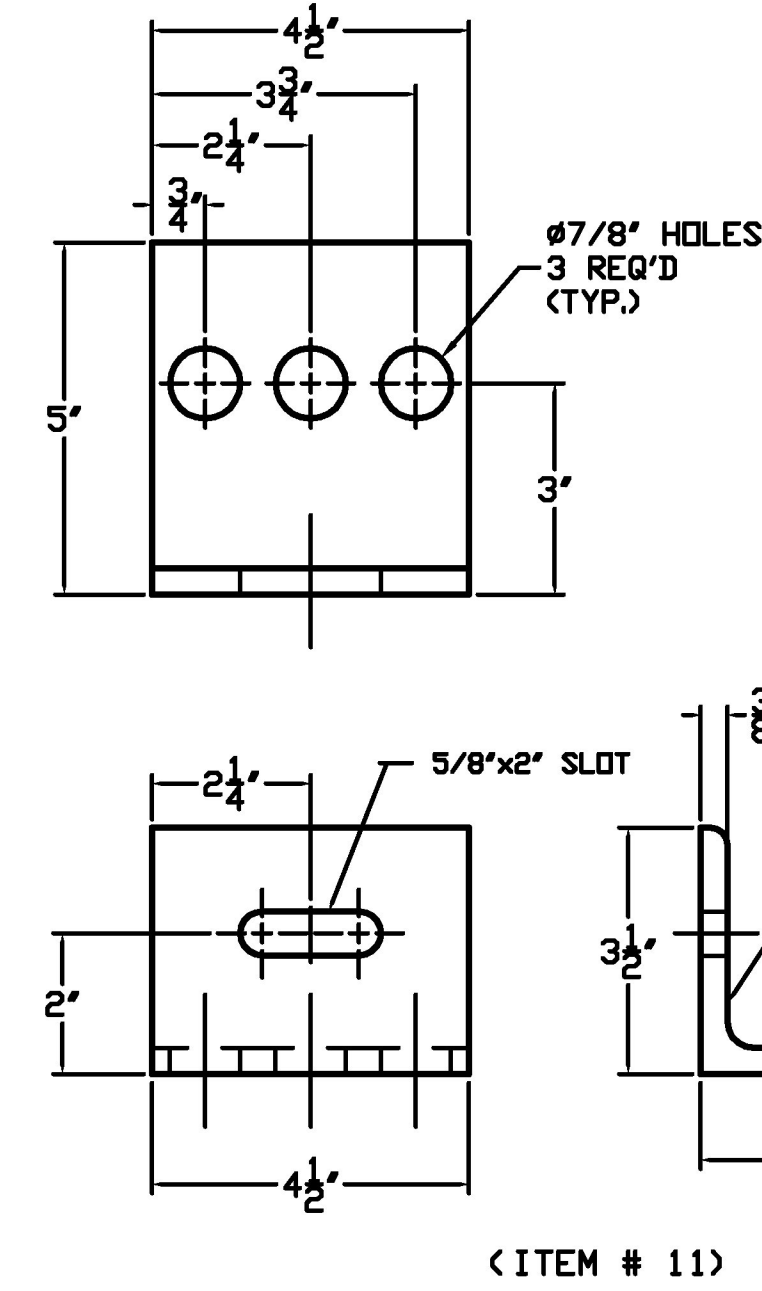
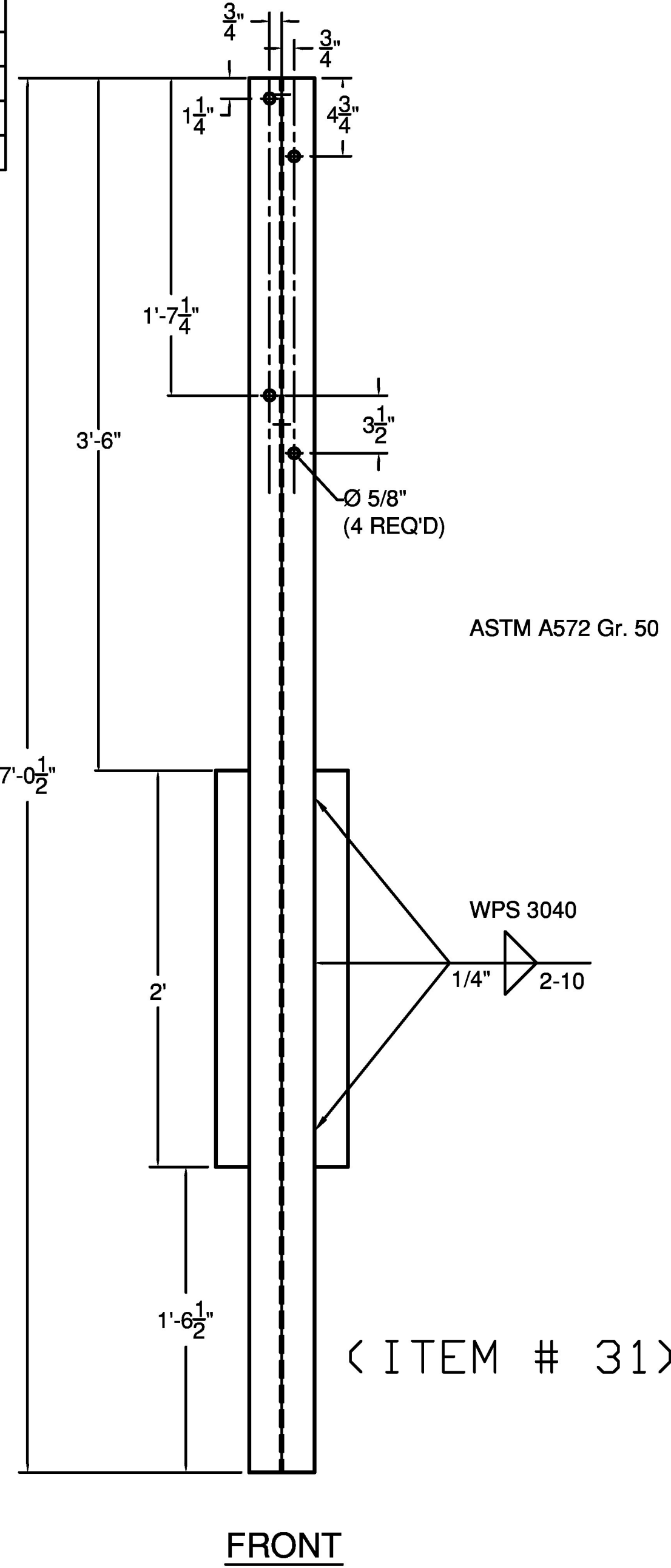
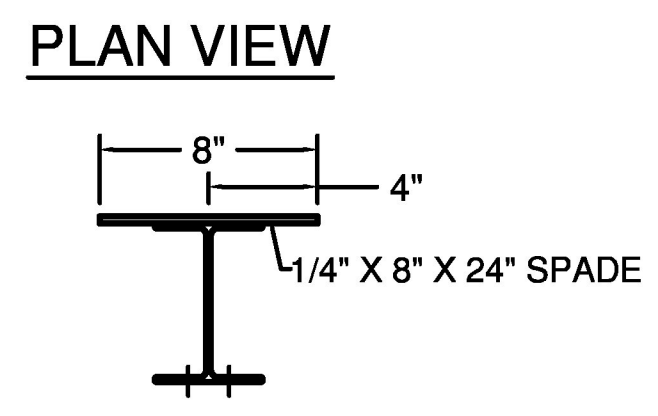
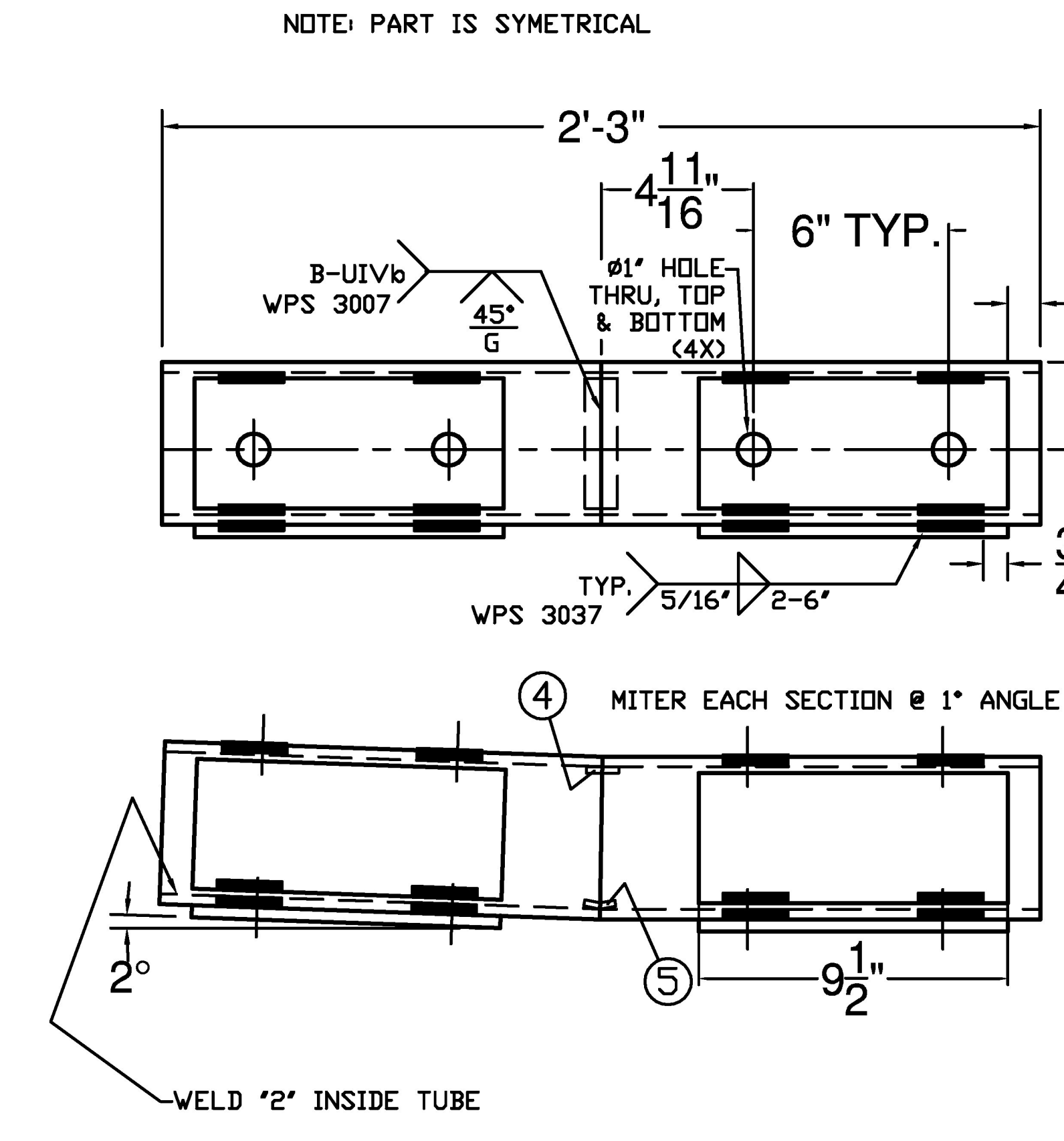
BILL OF MATERIALS, (EACH) WW2 & WW4 CORNERS			
ITEM #	QTY.	DESCRIPTION	MATERIAL (ASTM)
2	4	3" I-POST, PUNCH 8", & 20" W/SPD @ 63" LG	A572 Gr. 50
3	2	3" I-END POST W/SPD @ 3'-8" LG	A572 Gr. 50
7	1	HSS 5X5 TUBE SPLICE @27" LG W/ 1/4" SHIMS	A500 Gr. B / A572 Gr. 50
10	20	REG BB SHELF ANGLES @ 4-1/2"	A572 Gr. 50
11	3	DWY BB SHELF ANGLES @ 4-1/2"	A572 Gr. 50
12	1	HSS 5X5 DBL BEND TUBE SPL @ 28" LG	A500 Gr. B / A572 Gr. 50
13	8	HSS 6X8" TRANS. TUBE B/D @ 6" LG	A500 Gr. B
15	1	HSS 6X6" BB @ 9'-0" KICKBACK, W/ CAP	A500 Gr. B / A36
19	19	3/8" X 7 1/2" BOLT, NUT, & 2 FW	A307, A563, F436
20	23	1/2" x 1-1/2" BOLT, NUT, & FW	A307, A563, F436
21	16	9/16" x 1-1/2" BOLT, NUT, 2 FW & LW	A307, A563, F436, ASME B18.21.1
23	16	3/4" X 7-1/2" BOLT, NUT, 2 FW & LW	A325, A563, F436, ASME B18.21.1
24	8	7/8" X 7-1/2" CARR BOLT, NUT, FW & LW	A307, A563, F436, ASME B18.21.1
25	2	3/4" X 7-1/2" BOLT, NUT, 2 FW, & LW	A325, A563, F436, ASME B18.21.1
26	1	PARAPET WALL CONNECTION	A572 Gr.50, A615 Gr.60, A500 Gr. B
27	2	HSS 6X6" BB EXT. RAIL @ 16'-2 1/16"	A500 Gr. B
29	1	HSS 6X6" BB TOP TRANS @ 14'-6 3/4" LG	A500 Gr. B
30	1	HSS 6X6" BB TOP TRANS @ 15'-2 11/16" LG	A500 Gr. B
31	4	W6X9 POST @ 7'-1/2" W/SPD @ 5/8" HOLES	A572 Gr. 50
32	4	3" I-POST, PUNCH 8" & 26", W/8X31 1/2" SPADE @7'-1/2"	A572 Gr. 50
33	4	3" I-POST, PUNCH 8" & VARIES", W/8X31 1/2" SPADE @7'-1/2"	A572 Gr. 50
34	0.5	HSS 6X6" BB @ 17'-11 1/2", DRILL 3" CC	A500 Gr. B
35	2	HSS 5X5 2" BEND TUBE SPL @ 27" LG	PER BDM

HARDWARE NOTES	
ITEM #	FUNCTION
19	BOLT RAIL TO SHELF ANGLE (ITEM #10)
20	BOLT SHELF ANGLE (ITEM #'S 10 & 11) TO POST
21	BOLT BLOCK-OUTS (ITEM # 13) TO HEAVY POST (ITEM # 31)
23	(4) PER SPLICE TUBING (ITEM # 7, & 35), & (4) PER PARAPET WALL CONNECTION (ITEM # 26)
24	BOLT RAIL (ITEMS # 27, TO BLOCK-OUTS (ITEM # 13)
25	BOLT DOUBLE BEND SPLICE TUBE (ITEM #12) TO RAIL (ITEM #30) & KICKBACK (ITEM #15) & ITEM #11)

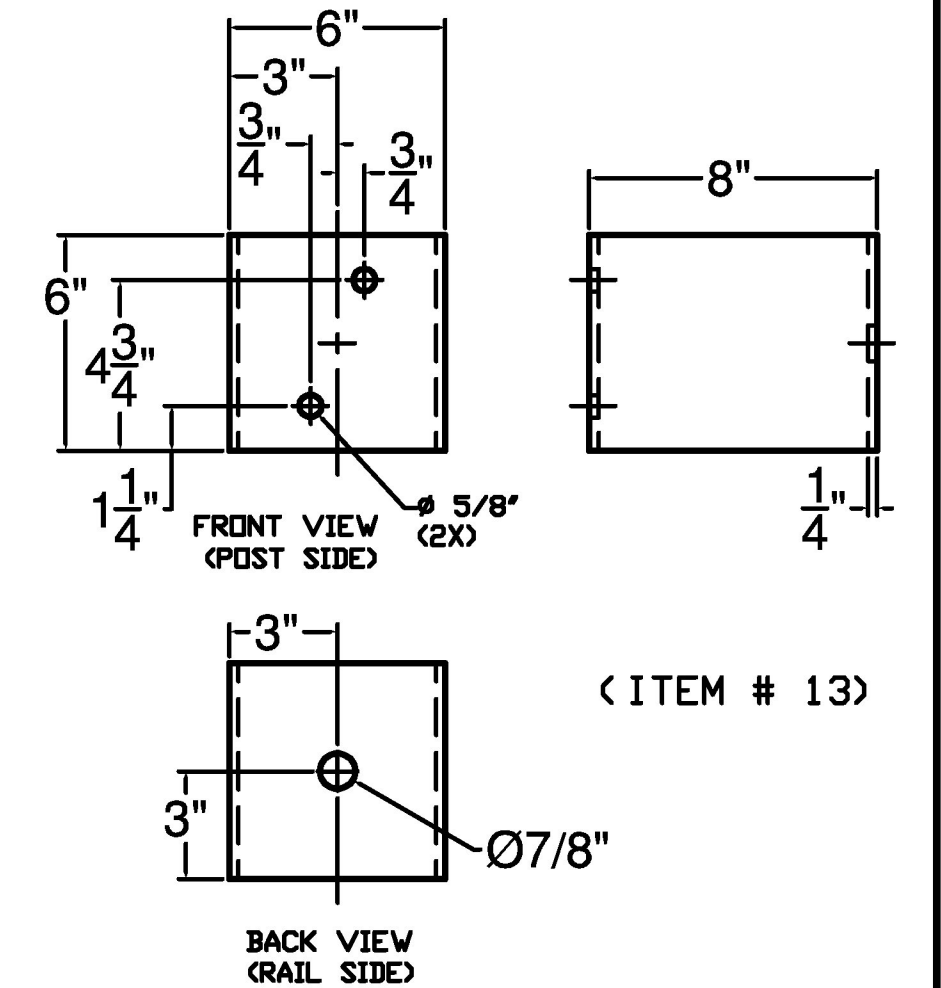


BILL OF MATERIALS			
ITEM #	QTY	DESCRIPTION	ASTM
1	1	5x5x5/16" TUBE @ 27"	A500 Gr. B
2	2	SHIM PL 3/8x4 @ 9 1/2" W/ HOLES	A572 Gr. 50
3	2	SHIM PL 3/8x4 @ 9 1/2"	A572 Gr. 50
4	3	IN-PR BACKER, 3/16"x1"x4"	A36
5	1	FORMED BACKER PLATE 3/16"x1"x4"	A36

(ITEM # 35)
 NOTE: REQUIRES ONE AS SHOWN, ONE WITH BEND IN OPPOSITE DIRECTION



Vermont Agency of Transportation
RECEIVED
 CK'D BY RKJG/GL OK'D BY JS
 July 25, 2013
 RESUBMIT NO Approved
 BY KH DATE 8-8-2013



ITEM #: 900.620 (TRANSITION) FR Lafayette - JAMAICA, EM13-016 SHEET 6 OF 8

APPROVED BY: _____

BRIDGE RAIL DETAILS SHEET
 EM13-006, JAMAICA ER BR 015-1 (23)
 TOWN OF JAMAICA, WINDHAM COUNTY, VT RTE 30 (MINOR ARTERIAL), BRIDGE NO : 30

R NO.	DATE	DESCRIPTION	BY	R NO.	DATE	DESCRIPTION	BY
E 1	7/8/13	REVISED PER 6/28/13 MARK UP	E.P.				
V 2	7/23/13	REVISE PER 7/23/13 EMAIL	E.P.				

ELDERLEE, INC.
 OAKS CORNERS, NEW YORK 14518
 E-Mail: dlong@elderlee.com
 Tel: 315-789-6670 Fax: 315-789-6615

DRAWN E.P. 5/30/13
 CHECKED D.L. 5/31/13
 APPROVED _____
 SCALE SCHEMATIC
 DRAWING NO. FR LAFAYETTE - JAMAICA