

**2' TALL FOOTINGS
ITEM 382401**
 (3) 16' REQUIRED - WWF1, WWF3A, WWF3A
 (1) 10' REQUIRED - WWF4B
 (1) 7' REQUIRED - WWF3B
 (1) 5' REQUIRED - WWF2C

UNIT WEIGHT AND VOLUME:
 16': 14,935# (3.56CY)
 10': 8,325# (2.22CY)
 7': 6,435# (1.56CY)
 5': 7,000# (1.67CY)

2' x 16' WINGWALL FOOTING REINFORCING SCHEDULE (COUNTS REFLECT 1 UNIT)

LOCATION	QTY	SIZE	SPACING	TYPE	CUT LENGTH
#4 LONGITUDINAL	8	#5	12" MAX	STRAIGHT	15'-8"
#4 STIRRUP	16	#4	12"	STIRRUP	9'-0"

2' x 10' WINGWALL FOOTING REINFORCING SCHEDULE (COUNTS REFLECT 1 UNIT)

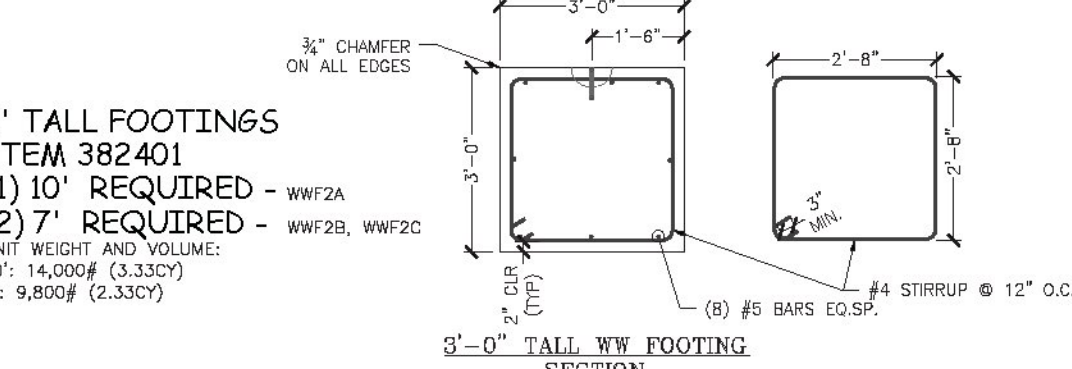
LOCATION	QTY	SIZE	SPACING	TYPE	CUT LENGTH
#4 LONGITUDINAL	8	#5	12" MAX	STRAIGHT	8'-8"
#4 STIRRUP	10	#4	12"	STIRRUP	9'-0"

2' x 7' WINGWALL FOOTING REINFORCING SCHEDULE (COUNTS REFLECT 1 UNIT)

LOCATION	QTY	SIZE	SPACING	TYPE	CUT LENGTH
#4 LONGITUDINAL	8	#5	12" MAX	STRAIGHT	8'-8"
#4 STIRRUP	7	#4	12"	STIRRUP	9'-0"

2' x 5' WINGWALL FOOTING REINFORCING SCHEDULE (COUNTS REFLECT 1 UNIT)

LOCATION	QTY	SIZE	SPACING	TYPE	CUT LENGTH
#4 LONGITUDINAL	8	#5	12" MAX	STRAIGHT	4'-8"
#4 STIRRUP	5	#4	12"	STIRRUP	9'-0"

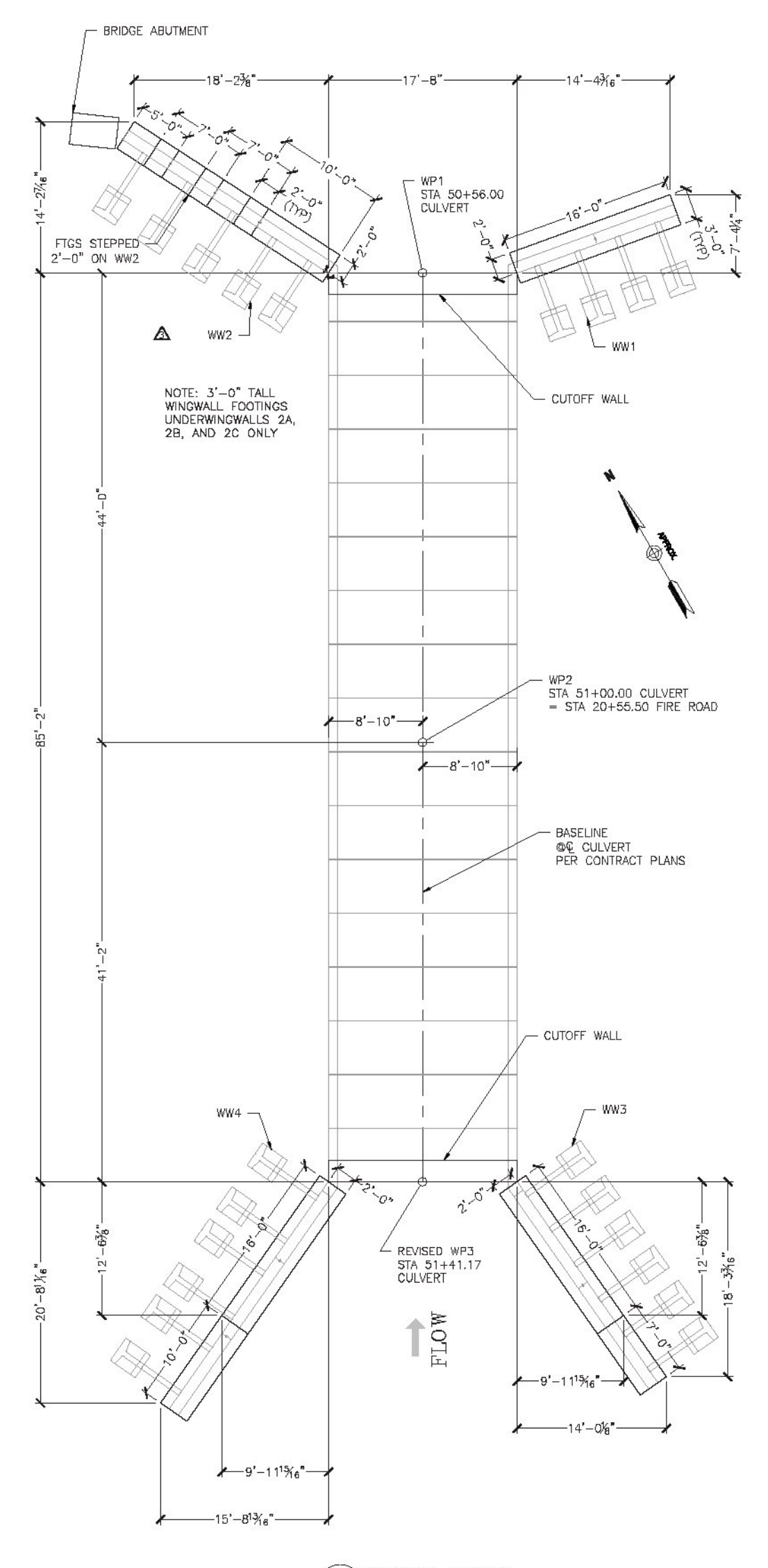


3' x 10' WINGWALL FOOTING REINFORCING SCHEDULE (COUNTS REFLECT 1 UNIT)

LOCATION	QTY	SIZE	SPACING	TYPE	CUT LENGTH
#4 LONGITUDINAL	8	#5	12" MAX	STRAIGHT	9'-8"
#4 STIRRUP	10	#4	12"	STIRRUP	11'-0"

3' x 7' WINGWALL FOOTING REINFORCING SCHEDULE (COUNTS REFLECT 1 UNIT)

LOCATION	QTY	SIZE	SPACING	TYPE	CUT LENGTH
#4 LONGITUDINAL	8	#5	12" MAX	STRAIGHT	8'-8"
#4 STIRRUP	7	#4	12"	STIRRUP	11'-0"



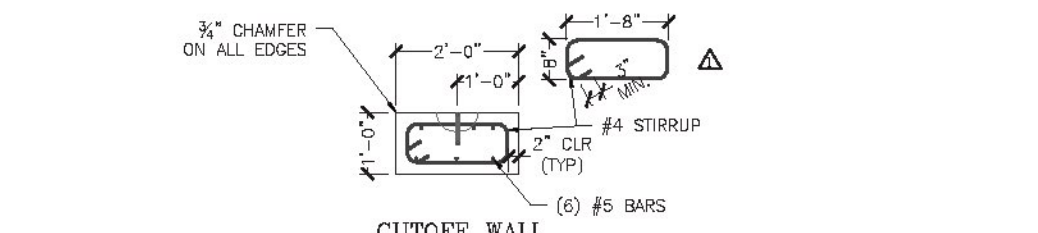
3 FOOTING LAYOUT
 1/8" = 1'-0"

**Vermont Agency of Transportation
 RECEIVED**
 CK'D BY JW/JG OK'D BY JS
 March 3, 2014
 RESUBMIT NO Approved
 BY KH DATE 3-10-2014

CUTOFF WALL REINFORCING SCHEDULE (COUNTS REFLECT 1 UNIT)

LOCATION	QTY	SIZE	SPACING	TYPE	CUT LENGTH
#5 LONGITUDINAL	8	#5	12" MAX	STRAIGHT	17'-4"
#4 STIRRUP	16	#4	12"	STIRRUP	4'-11 1/2"

**2 REQUIRED
 ITEM 275800**
 UNIT WEIGHT AND VOLUME:
 CUTOFF WALL: 5,500# (1.31CY)



DESIGNED BY	DATE	BY
CHECKED BY	DATE	BY
APPROVED BY	DATE	BY

MICHE CORPORATION, INC.
 173 BARTON INDUSTRIAL DRIVE, PO BOX 878
 JAMAICA, VT 05343
 PHONE: 802-252-2218
 FAX: 802-252-1118

**Fire Drive off VT Rte. 30
 VAO # ER-BRF 015-1(23)
 Jamaica, VT
 16'x8' Box Culvert - Footing Details**

Project No. 3744

Prepared for:
Bazin Brothers Trucking
 2425 Back Westminster Road
 Westminster, VT 05158

DATE: 9/4/2013
 INITIAL: FJL

DWG NO.
 S6.0