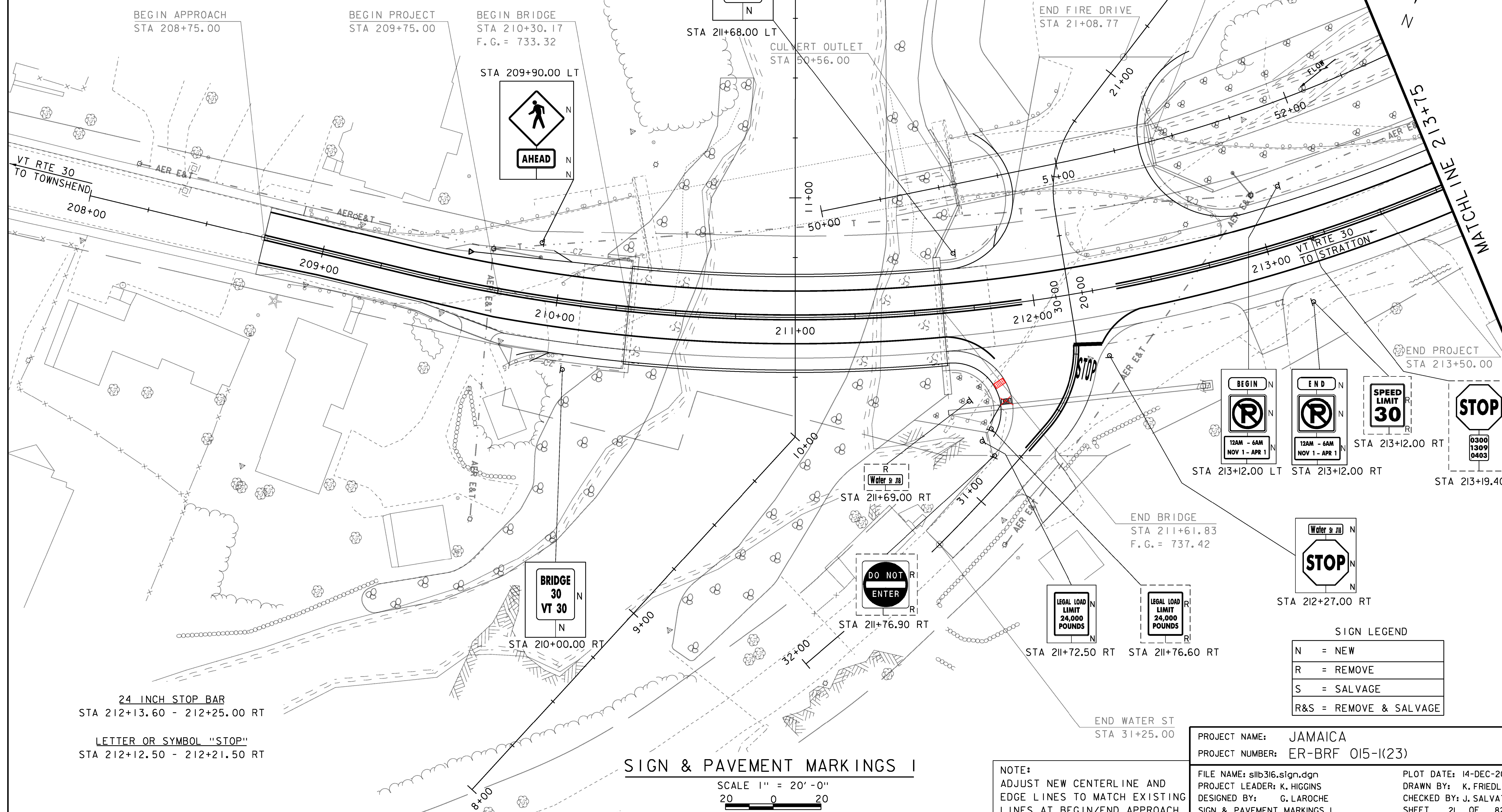


DETECTABLE WARNING SURFACE
 STA ~~211+83.60~~ RT
 30+56 RT
4 INCH WHITE LINE
 STA 208+75.00 - STA 211+81.00 RT
 STA 208+75.00 - STA 213+75.00 LT
 STA 212+25.00 - STA 213+75.00 RT

4 INCH YELLOW LINE (DOUBLE)
 STA 208+75.00 - STA 211+95.00
 STA 212+35.00 - STA 213+75.00
 STA 30+21.00 - SAT 30+71.00

REMOVING SIGNS
 STA 211+69.00 RT
 STA 211+76.60 RT
 STA 211+76.90 RT
 STA 213+12.00 RT
 STA 213+19.40 RT (2)

TRAFFIC SIGNS, TYPE A
 STA 209+90.00 LT (2)
 STA 210+00.00 RT
 STA 211+68.00 LT (2)
 STA 211+72.50 RT
 STA 212+27.00 RT (2)
 STA 213+12.00 LT (3)
 STA 213+12.00 RT (3)



24 INCH STOP BAR
 STA 212+13.60 - 212+25.00 RT

LETTER OR SYMBOL "STOP"
 STA 212+12.50 - 212+21.50 RT

SIGN & PAVEMENT MARKINGS I

SCALE 1" = 20'-0"
 20 0 20

NOTE:
 ADJUST NEW CENTERLINE AND
 EDGE LINES TO MATCH EXISTING
 LINES AT BEGIN/END APPROACH

PROJECT NAME: JAMAICA
PROJECT NUMBER: ER-BRF 015-1(23)

FILE NAME: s11b316.sign.dgn
 PROJECT LEADER: K. HIGGINS
 DESIGNED BY: G. LAROCHE
 SIGN & PAVEMENT MARKINGS I

PLOT DATE: 14-DEC-2012
 DRAWN BY: K. FRIEDLAND
 CHECKED BY: J. SALVATORI
 SHEET 21 OF 82

SIGN LEGEND

N	=	NEW
R	=	REMOVE
S	=	SALVAGE
R&S	=	REMOVE & SALVAGE