

REHAB. DIS. CBS OR MHS. CLASS I OR II
 STA. 18+07, RT
 STA. 18+25, LT
 STA. 21+53, LT
 STA. 21+54, RT

CHANGING ELEVATION OF SEWER MANHOLES
 STA. 17+92, LT
 STA. 21+28, LT

CAST-IN-PLACE CONCRETE CURB, TYPE B
 STA. 17+82, RT

REMOVAL OF EXISTING CURB
 STA. 17+82, RT

BITUMINOUS CONCRETE GUTTERS AND TRAFFIC ISLANDS
 STA. 21+29 TO 22+00, LT

PORTLAND CEMENT CONCRETE SIDEWALK, 5 INCH
 STA. 17+82, RT
 STA. 19+00, RT
 STA. 19+01, LT
 STA. 20+94, LT
 STA. 21+16, RT
 STA. 21+28, LT
 STA. 21+45, RT

DETECTABLE WARNING SURFACE
 STA. 17+82, RT
 STA. 19+00, RT
 STA. 19+01, LT
 STA. 20+94, LT
 STA. 21+16, RT
 STA. 21+28, LT
 STA. 21+45, RT

ADJUST ELEVATION OF VALVE BOX
 STA. 17+75, RT
 STA. 17+91, RT
 STA. 17+95, RT
 STA. 18+25, RT
 STA. 19+62, RT
 STA. 21+38, RT

DURABLE & TEMPORARY 4 INCH WHITE LINE
 (ALL LINES WILL INCLUDE EDGE LINE BREAKS AND RADIUS FOR SIDE ROADS)
 STA. 17+00 TO 22+00, SOLID LT & RT
 STA. 17+00 TO 21+64, SOLID RT (PARKING SPACES & DIAGONALS)
 SEE SHEET 19 (TYP.)
 STA. 17+00 TO 20+94, SOLID LT (PARKING SPACES & DIAGONALS)
 STA. 17+95, SOLID RT (EDGELINES, EASTERN AVE. TH-44)
 STA. 21+17, SOLID LT (EDGELINES, CHURCH ST. TH-59)

DURABLE & TEMPORARY 4 INCH YELLOW LINE
 (ALL LINES WILL INCLUDE C BREAKS FOR SIDE ROADS)
 STA. 17+00 TO 22+00, SOLID LT & RT
 STA. 17+95, DOUBLE SOLID RT (EASTERN AVE. TH-44)
 STA. 21+17, DOUBLE SOLID LT (CHURCH ST. TH-59)

DURABLE & TEMPORARY 24 INCH STOP BAR
 STA. 17+95, RT (EASTERN AVE. TH-44)
 STA. 21+17, LT (CHURCH ST. TH-59)

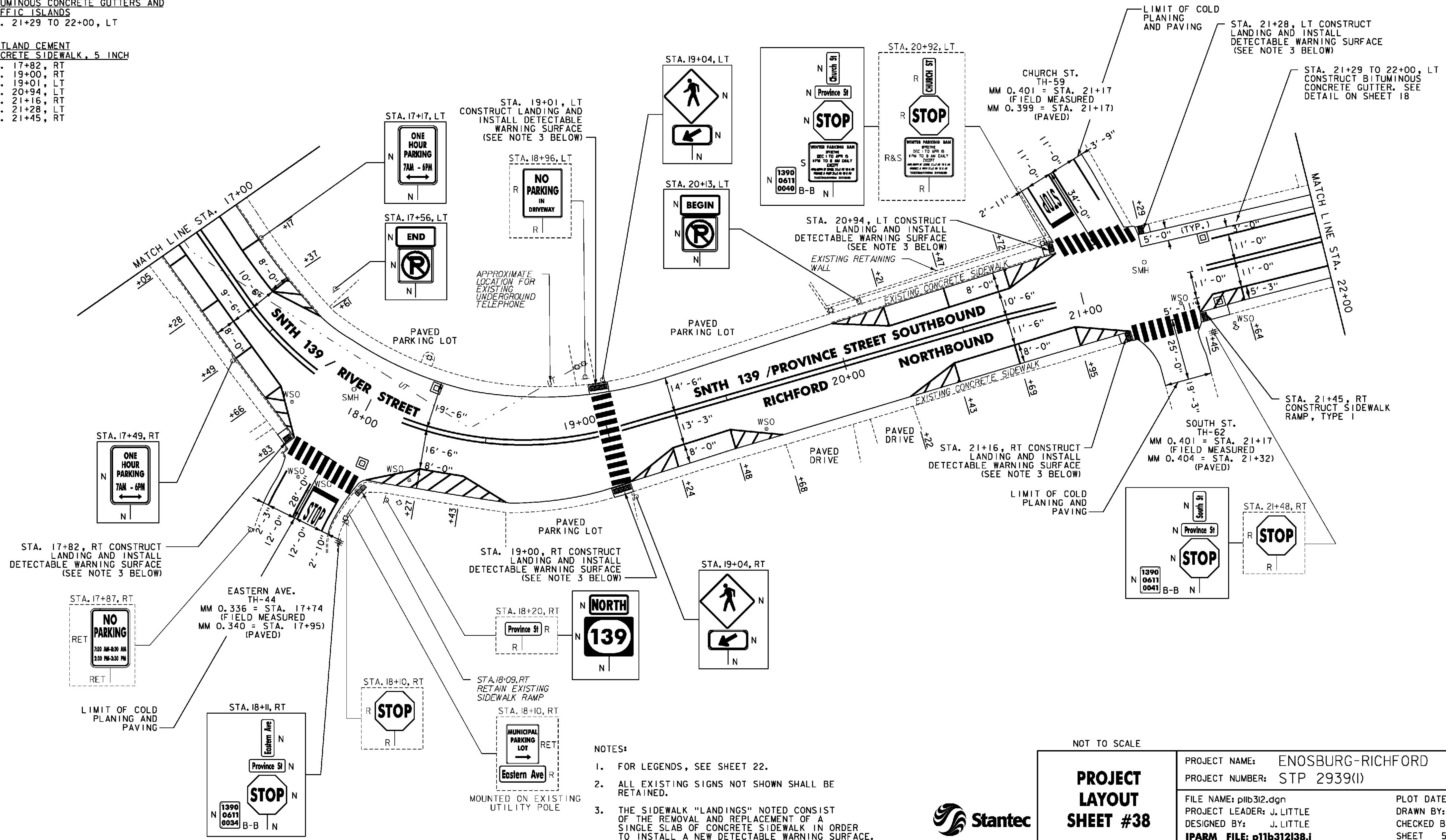
DURABLE & TEMPORARY LETTER OR SYMBOL
 STA. 17+95, RT "STOP" (EASTERN AVE. TH-44)
 STA. 21+17, LT "STOP" (CHURCH ST. TH-59)

DURABLE & TEMPORARY CROSSWALK MARKING
 STA. 17+95, RT (EASTERN AVE. TH-44)
 STA. 19+01, LT TO RT
 STA. 21+17, LT (CHURCH ST. TH-59)
 STA. 21+32, RT (SOUTH ST. TH-62)
 SEE SHEET 19 (TYP.)

PAINTED CURB
 STA. 17+37 TO STA. 17+61, LT
 STA. 17+66 TO STA. 17+83, RT
 STA. 18+09 TO STA. 18+60, RT
 STA. 19+05 TO STA. 19+24, RT
 STA. 19+48 TO STA. 19+68, RT
 STA. 20+00 TO STA. 20+21, LT
 STA. 20+22 TO STA. 20+43, RT
 STA. 20+72 TO STA. 20+94, LT
 STA. 20+95 TO STA. 21+16, RT
 STA. 21+45 TO STA. 21+64, RT

REMOVING SIGNS
 AS SHOWN - 8

ERECTING SALVAGED SIGNS
 AS SHOWN - 1



- NOTES:**
- FOR LEGENDS, SEE SHEET 22.
 - ALL EXISTING SIGNS NOT SHOWN SHALL BE RETAINED.
 - THE SIDEWALK "LANDINGS" NOTED CONSIST OF THE REMOVAL AND REPLACEMENT OF A SINGLE SLAB OF CONCRETE SIDEWALK IN ORDER TO INSTALL A NEW DETECTABLE WARNING SURFACE.

NOT TO SCALE

PROJECT LAYOUT SHEET #38	PROJECT NAME: ENOSBURG-RICHFORD	PLOT DATE: 3/19/2014
	PROJECT NUMBER: STP 2939(I)	DRAWN BY: D. DRAPER
	FILE NAME: pl1b312.dgn	CHECKED BY: J. LITTLE
	PROJECT LEADER: J. LITTLE	SHEET 59 OF 115
	DESIGNED BY: J. LITTLE	
	IPARM FILE: p11b312138.i	

