

CHANGING ELEVATION OF Dis. CBs OR MHS  
 STA. 255+43, LT

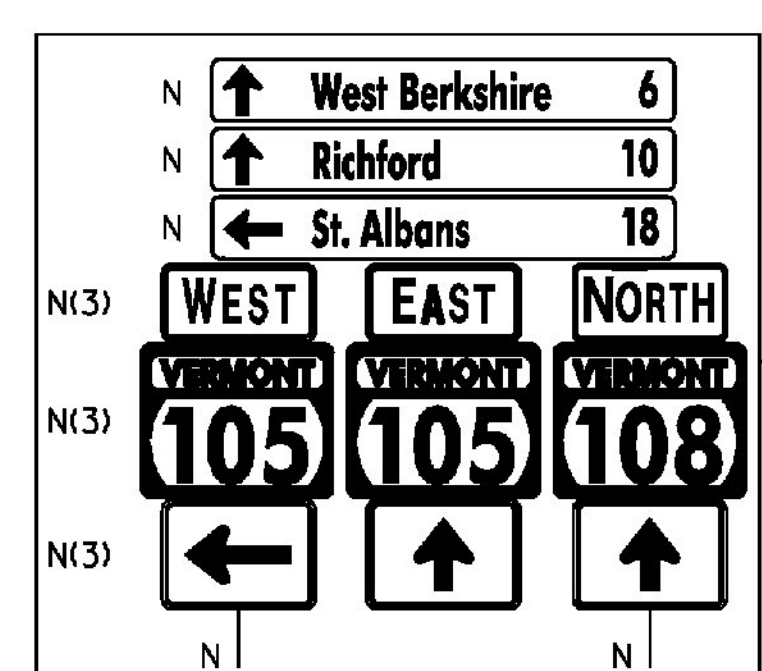
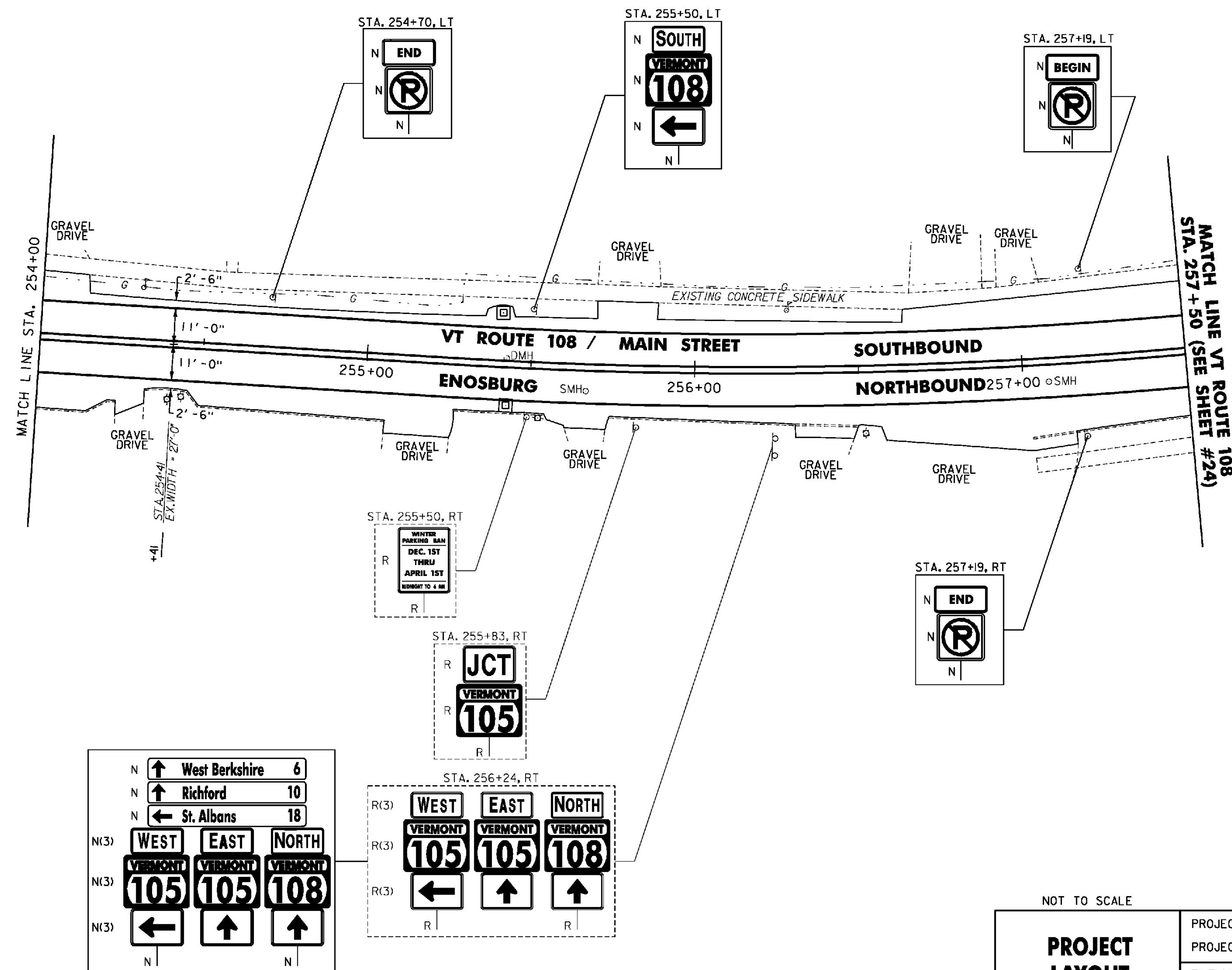
REHAB. Dis. OR MHS. CLASS I OR II  
 STA. 255+41, LT  
 STA. 255+43, RT

CHANGING ELEVATION OF SEWER MANHOLES  
 STA. 255+67, RT  
 STA. 257+08, RT

DURABLE & TEMPORARY 4 INCH WHITE LINE  
 (ALL LINES WILL INCLUDE EDGE LINE BREAKS  
 AND RADII FOR SIDE ROADS)  
 STA. 254+00 TO 257+50, SOLID LT & RT

DURABLE & TEMPORARY 4 INCH YELLOW LINE  
 (ALL LINES WILL INCLUDE  $\frac{1}{2}$  BREAKS FOR SIDE ROADS)  
 STA. 254+00 TO 257+50, SOLID LT & RT

REMOVING SIGNS  
 AS SHOWN - 12



- NOTES:
- FOR LEGENDS, SEE SHEET 22.
  - ALL EXISTING SIGNS NOT SHOWN SHALL BE RETAINED.



NOT TO SCALE

**PROJECT LAYOUT SHEET #16**

PROJECT NAME: ENOSBURG-RICHFORD	
PROJECT NUMBER: STP 2939(I)	
FILE NAME: p11b312.dgn	PLOT DATE: 3/19/2014
PROJECT LEADER: J. LITTLE	DRAWN BY: D. DRAPER
DESIGNED BY: J. LITTLE	CHECKED BY: J. LITTLE
IPARM FILE: p11b312116.i	SHEET 37 OF 115