

DURABLE & TEMPORARY 4 INCH WHITE LINE
 (ALL LINES WILL INCLUDE EDGE LINE BREAKS
 AND RADII FOR SIDE ROADS)
 STA. 237+44.16 TO 240+00, SOLID LT & RT
 STA. 237+88, SOLID RT (EDGE LINES, HAYES FARM RD.)

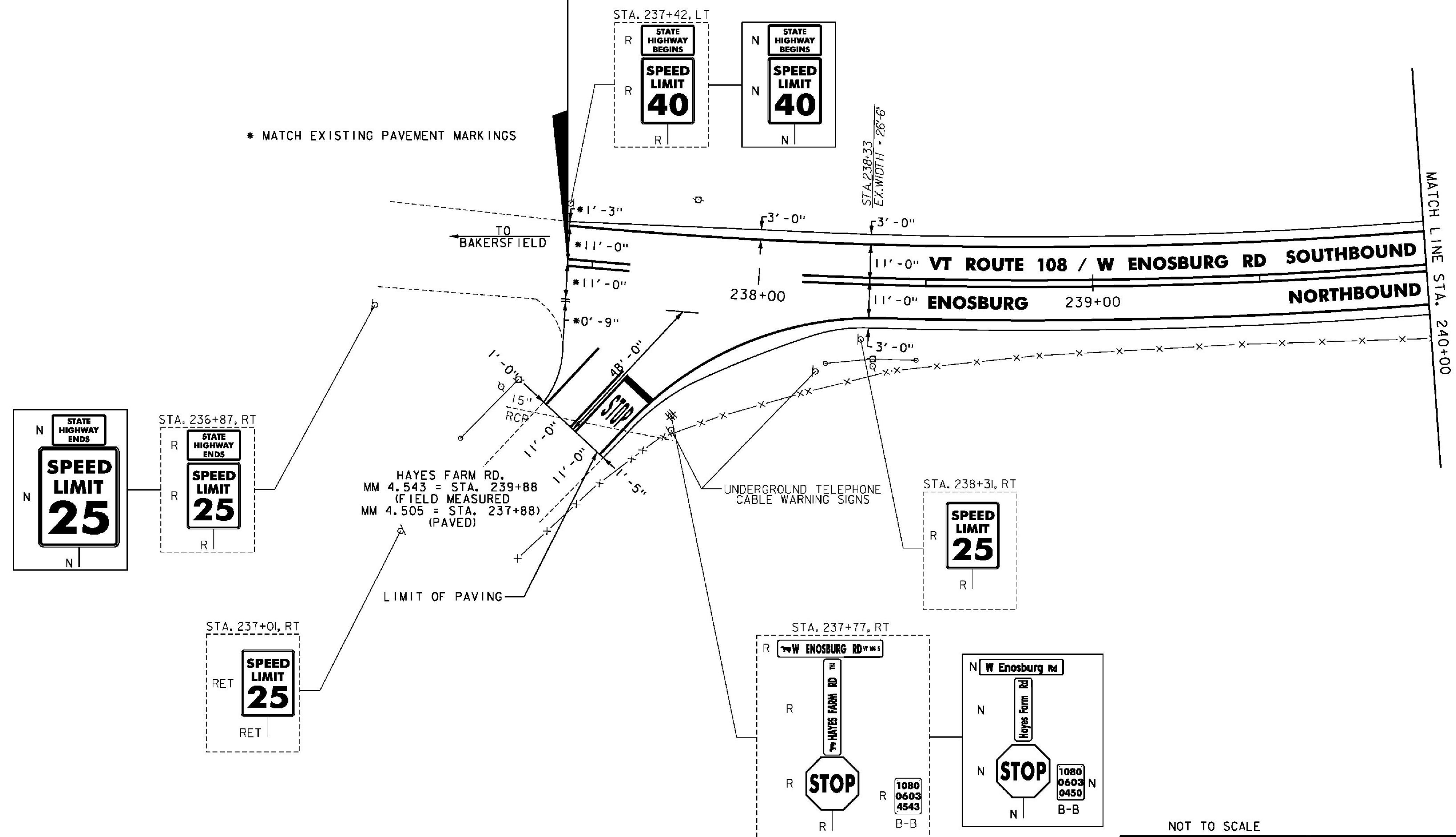
DURABLE & TEMPORARY 24 INCH STOP BAR
 STA. 237+88, RT (HAYES FARM RD.)

REMOVING SIGNS
 AS SHOWN - 9

DURABLE & TEMPORARY LETTER OR SYMBOL
 STA. 237+88, RT "STOP" (HAYES FARM RD.)

DURABLE & TEMPORARY 4 INCH YELLOW LINE
 (ALL LINES WILL INCLUDE \varnothing BREAKS FOR SIDE ROADS)
 STA. 237+44.16 TO 240+00, SOLID LT & RT
 STA. 237+88, DOUBLE SOLID RT (HAYES FARM RD.)

**BEGIN STP 2939(1) VT ROUTE 108
 ENOSBURG STA. 237+44.16 = (MM 4.497)**



- NOTES:
- FOR LEGENDS, SEE SHEET 22.
 - ALL EXISTING SIGNS NOT SHOWN SHALL BE RETAINED.



PROJECT LAYOUT SHEET #12

NOT TO SCALE

PROJECT NAME: ENOSBURG-RICHFORD
 PROJECT NUMBER: STP 2939(1)

FILE NAME: p11b312.dgn
 PROJECT LEADER: J. LITTLE
 DESIGNED BY: J. LITTLE
 IPARM FILE: p11b312112.i

PLOT DATE: 3/19/2014
 DRAWN BY: D. DRAPER
 CHECKED BY: J. LITTLE
 SHEET 33 OF 115