

**CHANGING ELEVATION OF SEWER MANHOLES**  
 STA. 80+10, RT  
 STA. 80+46, LT

**ADJUST ELEVATION OF VALVE BOX**  
 STA. 80+28, LT

**DURABLE & TEMPORARY 4 INCH WHITE LINE**  
 (ALL LINES WILL INCLUDE EDGE LINE BREAKS AND RADII FOR SIDE ROADS)  
 STA. 75+00 TO 80+73.12, SOLID LT & RT  
 STA. 80+01, SOLID RT (EDGE LINES, JAYVIEW DR.)

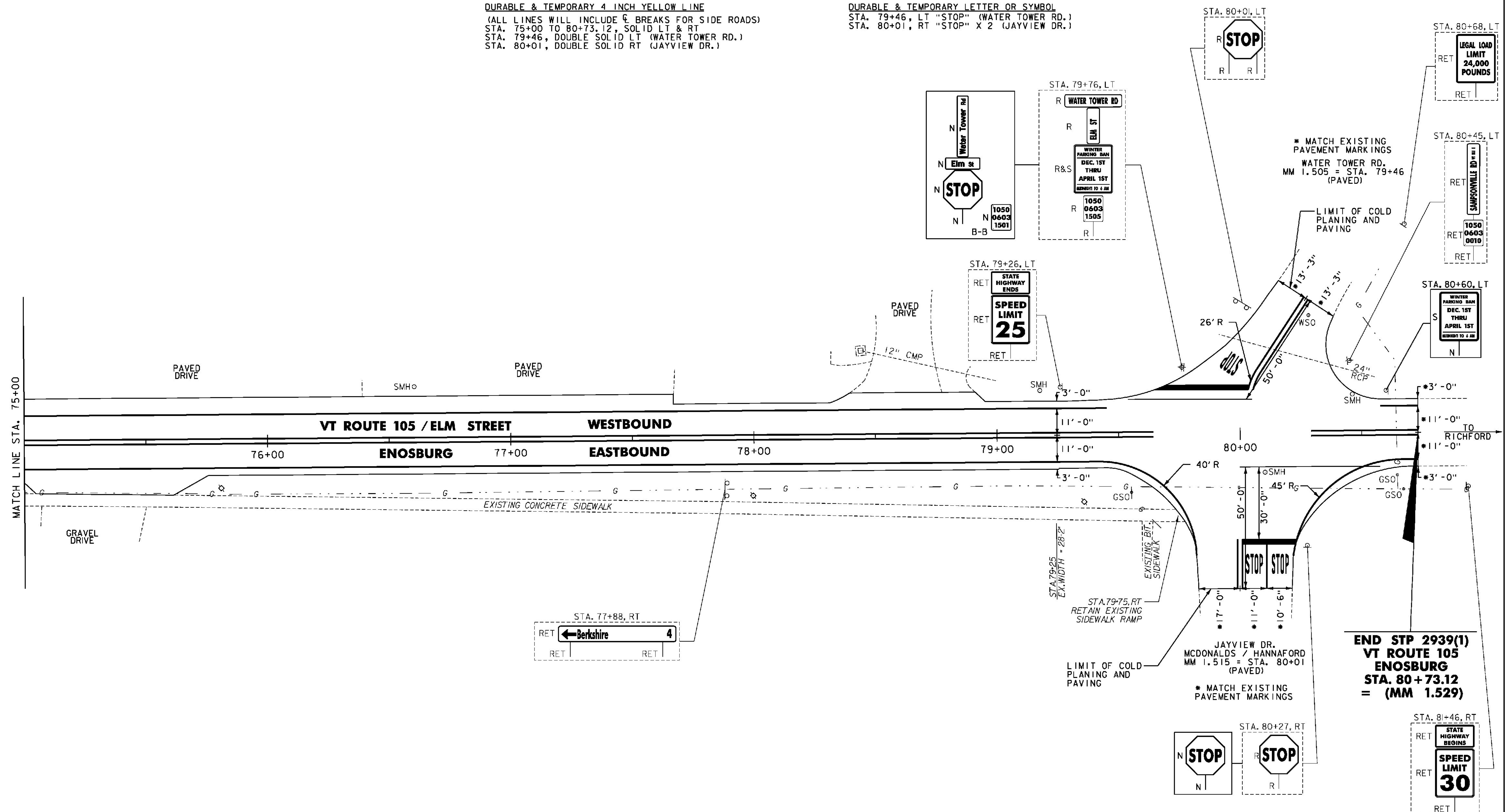
**DURABLE & TEMPORARY 4 INCH YELLOW LINE**  
 (ALL LINES WILL INCLUDE  $\frac{1}{2}$  BREAKS FOR SIDE ROADS)  
 STA. 75+00 TO 80+73.12, SOLID LT & RT  
 STA. 79+46, DOUBLE SOLID LT (WATER TOWER RD.)  
 STA. 80+01, DOUBLE SOLID RT (JAYVIEW DR.)

**DURABLE & TEMPORARY 24 INCH STOP BAR**  
 STA. 79+46, LT (WATER TOWER RD.)  
 STA. 80+01, RT (JAYVIEW DR.)

**DURABLE & TEMPORARY LETTER OR SYMBOL**  
 STA. 79+46, LT "STOP" (WATER TOWER RD.)  
 STA. 80+01, RT "STOP" X 2 (JAYVIEW DR.)

**REMOVING SIGNS**  
 AS SHOWN - 6

**ERECTING SALVAGED SIGNS**  
 AS SHOWN - 1



- NOTES:
- FOR LEGENDS, SEE SHEET 22.
  - ALL EXISTING SIGNS NOT SHOWN SHALL BE RETAINED.



NOT TO SCALE  
**PROJECT LAYOUT SHEET #11**

PROJECT NAME: ENOSBURG-RICHFORD	PLOT DATE: 3/19/2014
PROJECT NUMBER: STP 2939(I)	DRAWN BY: D. DRAPER
FILE NAME: p11b312.dgn	CHECKED BY: J. LITTLE
PROJECT LEADER: J. LITTLE	SHEET 32 OF 115
DESIGNED BY: J. LITTLE	
IPARM FILE: p11b31211.i	

**END STP 2939(I)  
 VT ROUTE 105  
 ENOSBURG  
 STA. 80+73.12  
 = (MM 1.529)**