

CHANGING ELEVATION OF Dis, CBs OR MHs
 STA. 45+44, RT

REHAB. Dis, CBs OR MHs, CLASS I OR II
 STA. 45+29, RT
 STA. 45+40, LT
 STA. 45+67, RT
 STA. 47+96, RT

CHANGING ELEVATION OF SEWER MANHOLES
 STA. 45+35, RT
 STA. 47+40, RT

REMOVING AND RESETTING CURB
 STA. 45+17, LT
 STA. 45+72, LT
 STA. 45+72, RT

PORTLAND CEMENT CONCRETE SIDEWALK, 5 INCH
 STA. 45+17, RT
 STA. 45+17, LT
 STA. 45+72, LT
 STA. 45+72, RT
 STA. 48+01, RT

DETECTABLE WARNING SURFACE
 STA. 45+72, LT
 STA. 45+72, RT
 STA. 48+01, RT

ADJUST ELEVATION OF VALVE BOX
 STA. 45+57, LT
 STA. 45+60, LT
 STA. 45+62, LT
 STA. 48+00, RT
 STA. 48+03, LT

DURABLE & TEMPORARY 4 INCH WHITE LINE
 (ALL LINES WILL INCLUDE EDGE LINE BREAKS AND RADII FOR SIDE ROADS)
 STA. 44+00 TO 49+00, SOLID LT & RT
 STA. 44+00 TO 49+00, SOLID LT & RT (PARKING SPACES & DIAGONALS)
 SEE SHEET 19 (TYP.)
 STA. 45+48, RT (EDGELINES, SCHOOL ST.)

DURABLE & TEMPORARY 4 INCH YELLOW LINE
 (ALL LINES WILL INCLUDE 1/2 BREAKS FOR SIDE ROADS)
 STA. 44+00 TO 49+00, SOLID LT & RT
 STA. 45+48, DOUBLE SOLID RT (SCHOOL ST.)
 STA. 47+84, DOUBLE SOLID RT (MISSISQUOI ST.)

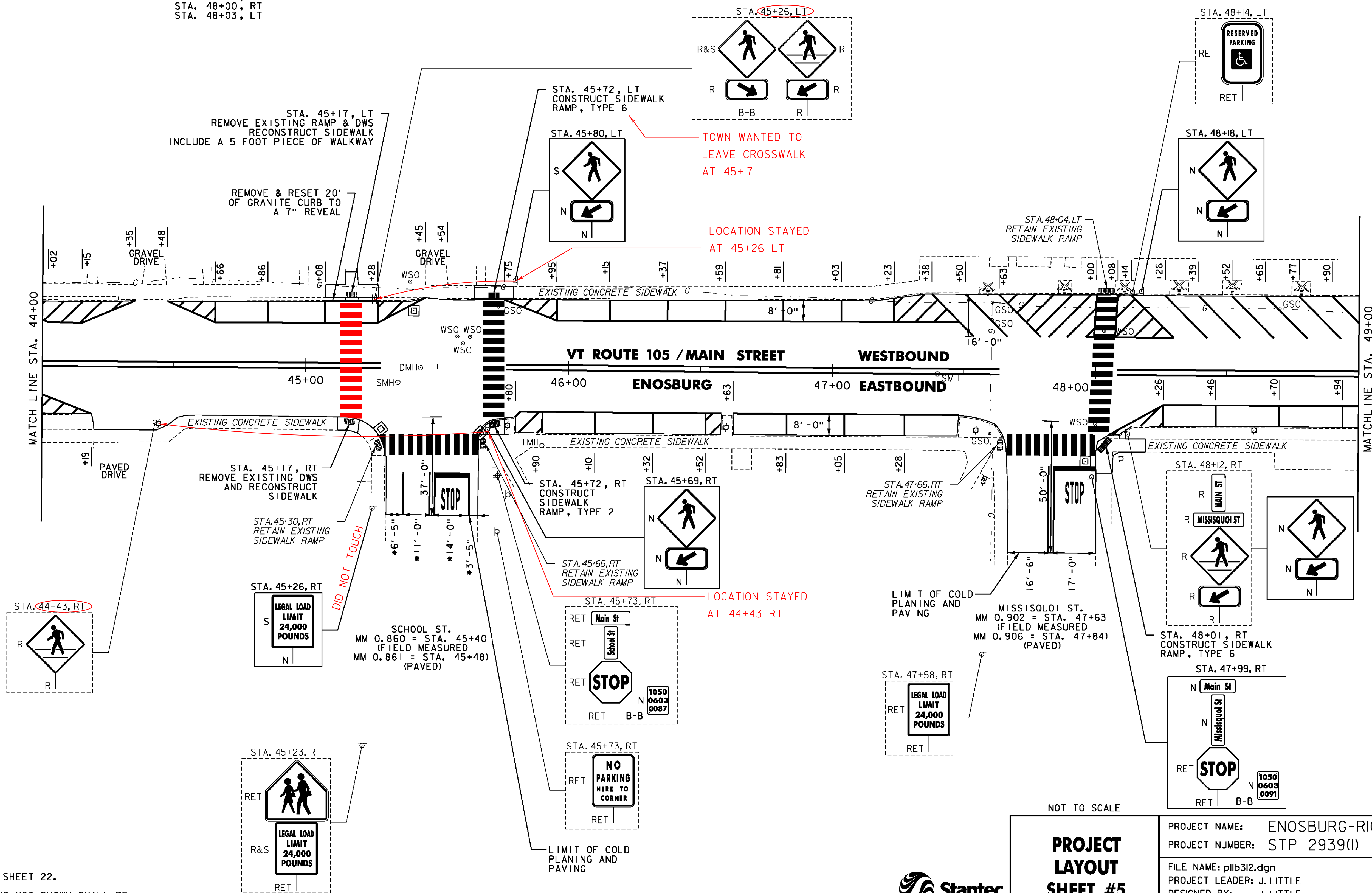
DURABLE & TEMPORARY 24 INCH STOP BAR
 STA. 45+48, RT (SCHOOL ST.)
 STA. 47+84, RT (MISSISQUOI ST.)

DURABLE & TEMPORARY LETTER OR SYMBOL
 STA. 45+48, RT "STOP" (SCHOOL ST.)
 STA. 47+84, RT "STOP" (MISSISQUOI ST.)

REMOVING SIGNS
 AS SHOWN - 10

ERECTING SALVAGED SIGNS
 AS SHOWN - 2

DURABLE & TEMPORARY CROSSWALK MARKING
 STA. 45+48, RT (SCHOOL ST.)
 STA. 45+72, LT TO RT
 STA. 47+84, RT (MISSISQUOI ST.)
 STA. 48+01, RT TO 48+04, LT
 SEE SHEET 19 (TYP.)



- NOTES:**
- FOR LEGENDS, SEE SHEET 22.
 - ALL EXISTING SIGNS NOT SHOWN SHALL BE RETAINED



PROJECT LAYOUT SHEET #5

PROJECT NAME: ENOSBURG-RICHFORD
 PROJECT NUMBER: STP 2939(I)

FILE NAME: pllb312.dgn
 PROJECT LEADER: J. LITTLE
 DESIGNED BY: J. LITTLE
 IPARM FILE: p11b312105.i

PLOT DATE: 3/19/2014
 DRAWN BY: D. DRAPER
 CHECKED BY: J. LITTLE
 SHEET 26 OF 115