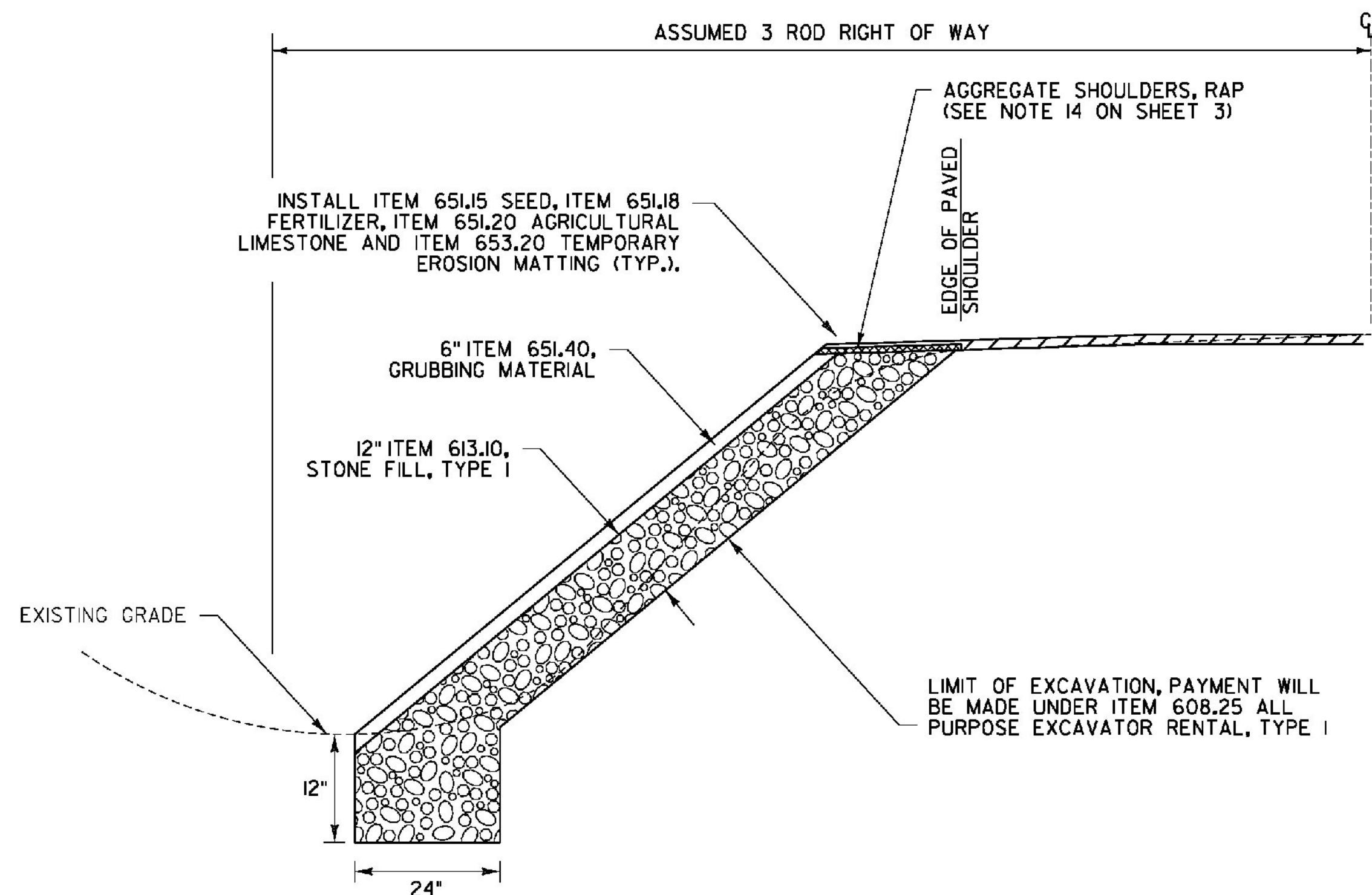


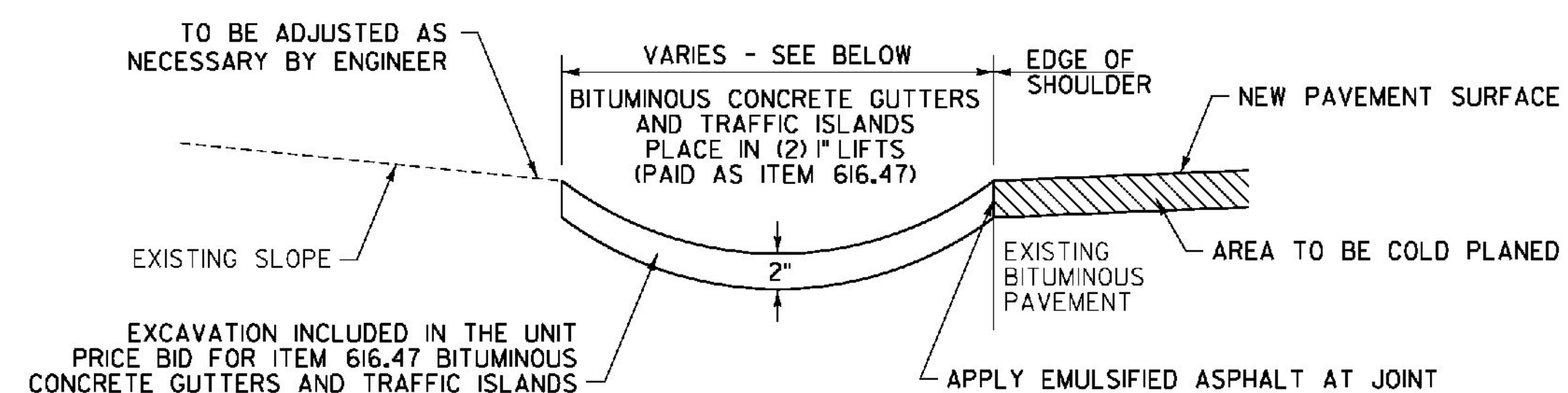
**TYPICAL - POT HOLE REPAIR**  
SEE NOTE 2 ON SHEET 3.

EMULSIFIED ASPHALT SHALL BE APPLIED AT ALL PATCH INTERFACES AT A RATE OF 0.25 - 0.5 GAL/SY. EMULSIFIED ASPHALT SHALL MEET THE REQUIREMENTS OF SECTION 404 AND WILL BE CONSIDERED INCIDENTAL TO ITEM 900.680 SPECIAL PROVISION (BITUMINOUS CONCRETE PAVEMENT SURFACE PREPARATION, TYPE 1)



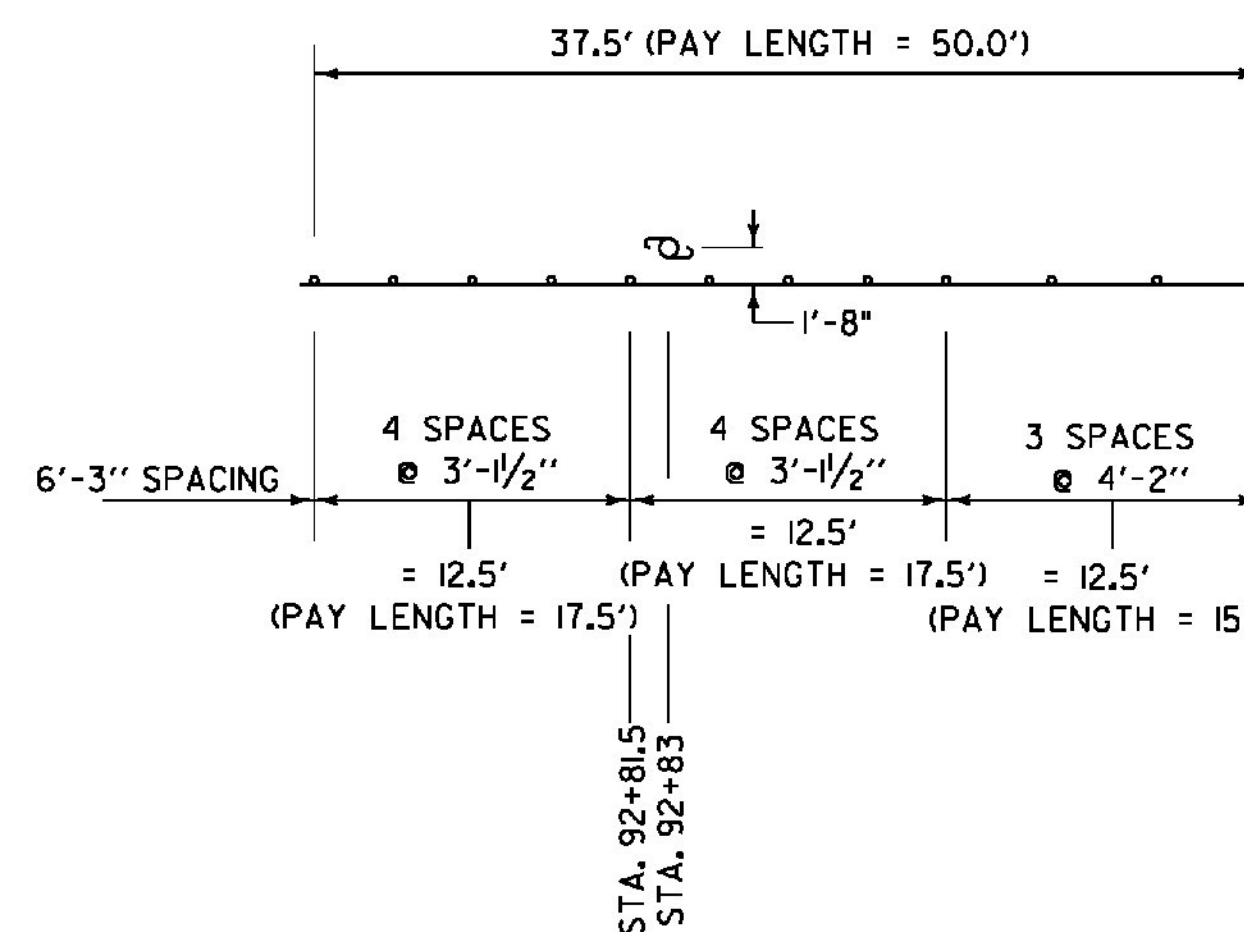
**SLOPE EROSION PREVENTION DETAIL**

NOTE: ALL WORK SHALL BE CONSTRUCTED WITHIN THE EXISTING ROADWAY RIGHT OF WAY.  
RICHFORD VT ROUTE 105 STA. 131+57 TO 133+53.12, LT



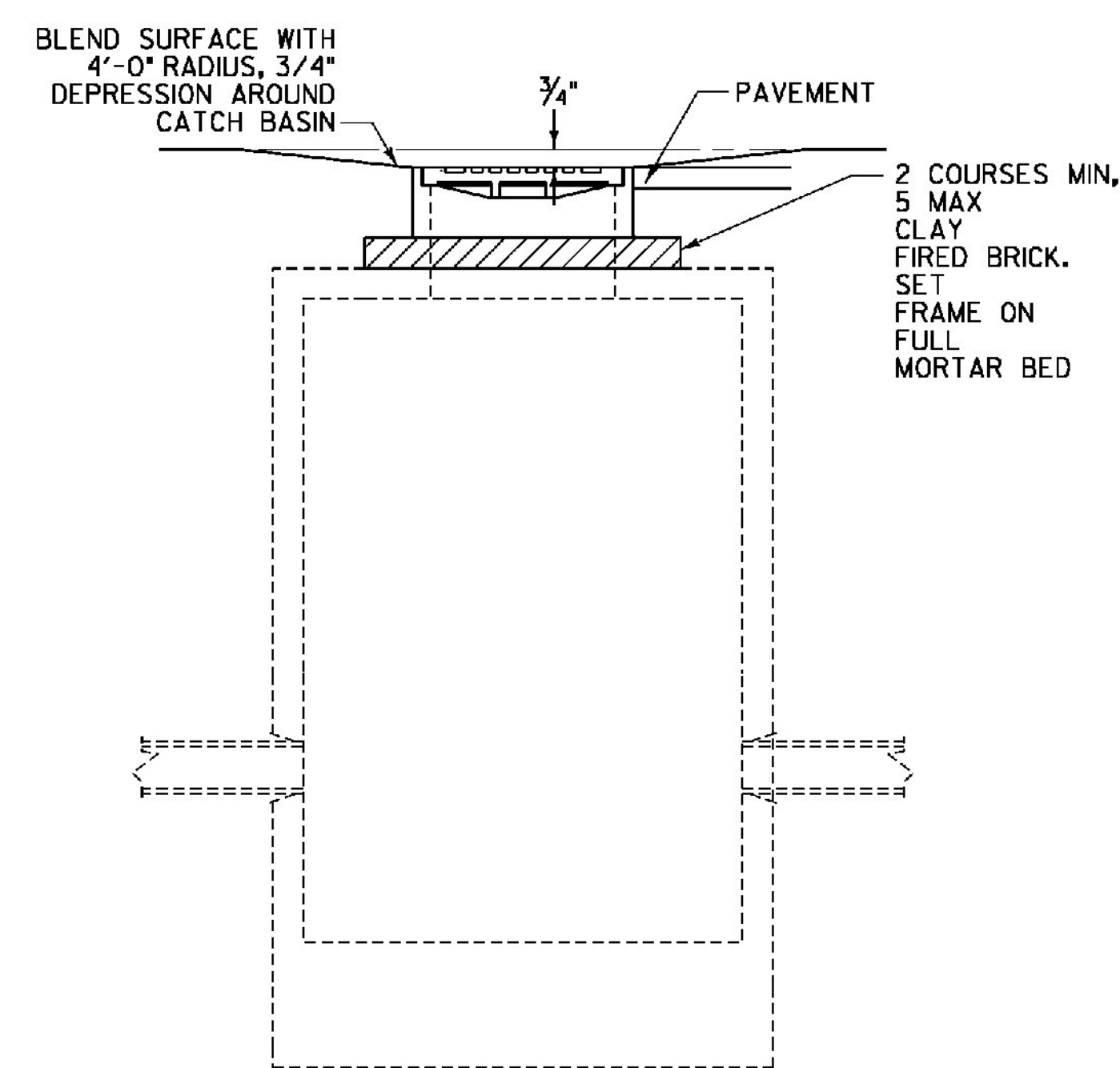
**BITUMINOUS CONCRETE GUTTER DETAIL - COLD PLANE**

RICHFORD VT ROUTE 105 STA. 84+84 TO 88+03, LT (WIDTH VARIES)  
RICHFORD VT ROUTE 105 STA. 90+33 TO 92+18, RT (WIDTH VARIES)  
RICHFORD VT ROUTE 105 STA. 90+81 TO 93+68, LT (4' WIDE)  
RICHFORD VT ROUTE 105 STA. 95+11 TO 95+83, RT (WIDTH VARIES)  
RICHFORD SNTH 139 STA. 21+29 TO 25+82, LT (5' WIDE)



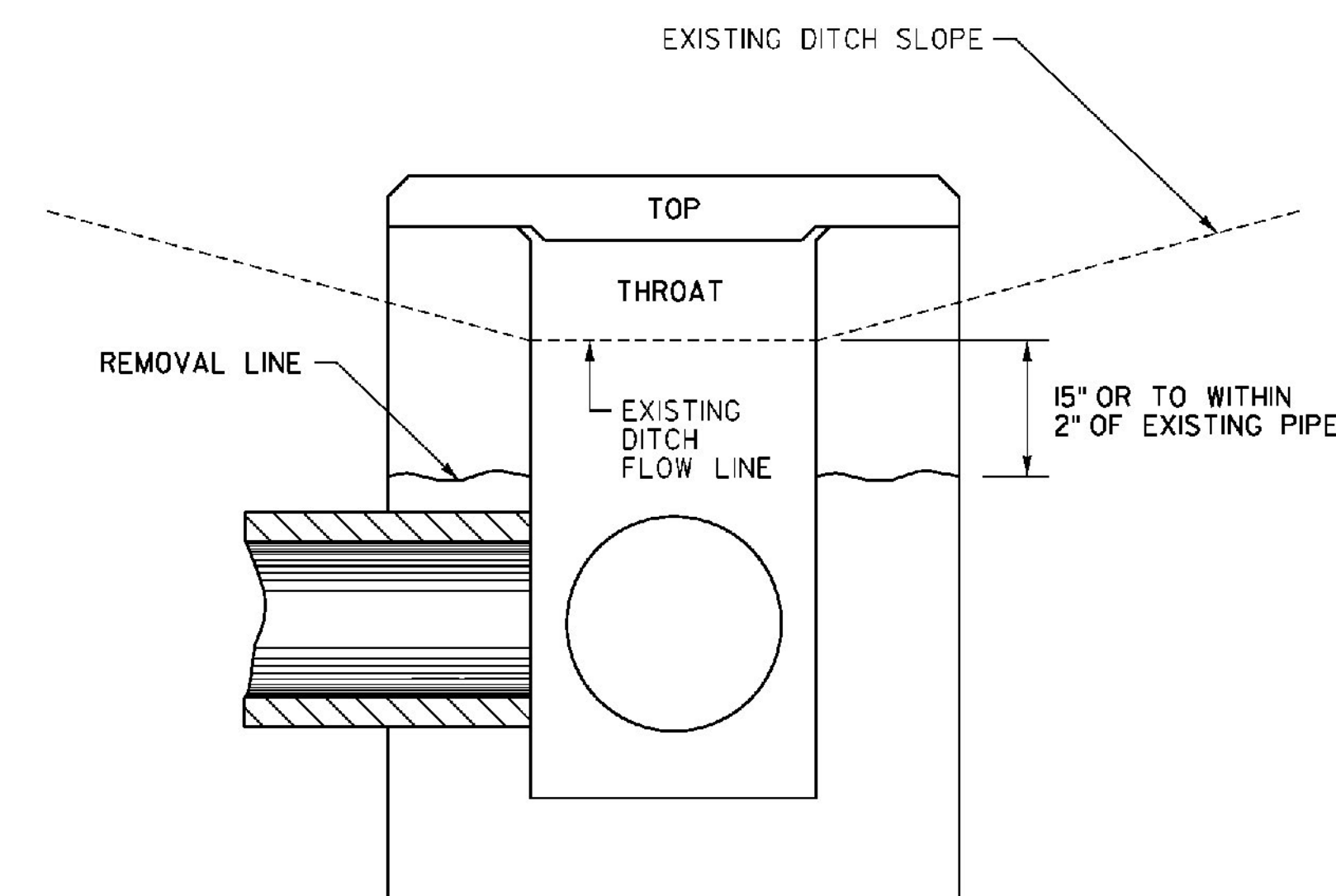
**REDUCED GUARDRAIL POST SPACING DETAIL #1**

LOCATION:  
RICHFORD SNTH 139 STA. 92+83, LT - CONCRETE SIGNAL POLE

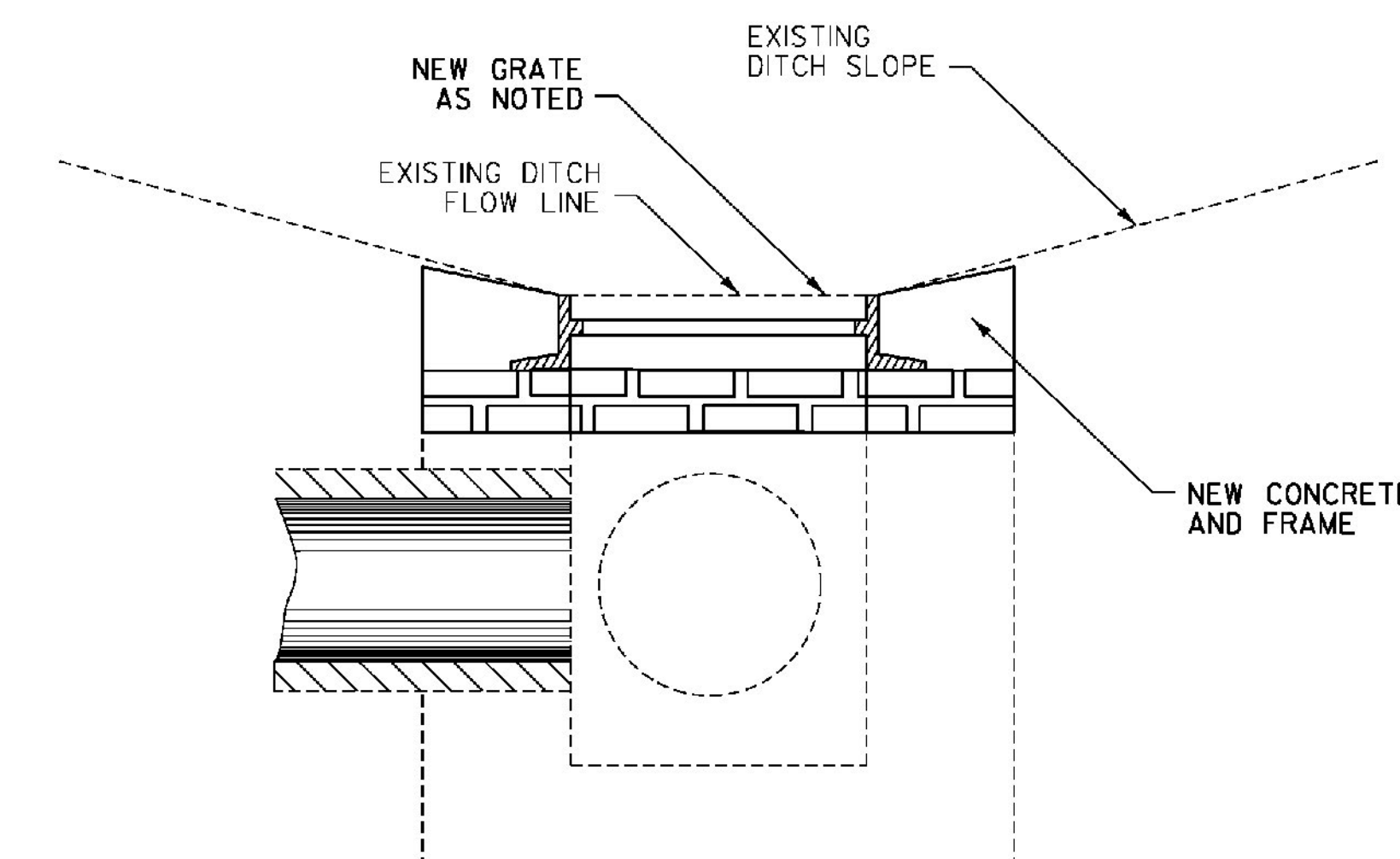


**REHAB. DI'S, CB'S, & MH'S DETAIL**

(ITEMS 604.412 AND 604.415 IN PAVEMENT AREAS)



**THROAT D.I. TOP REMOVAL**



**NEW D.I. TOP PLACEMENT**

**THROAT DI REHAB DETAIL**

RICHFORD SNTH 139 STA. 53+57, RT

**NOTES:**

1. REMOVE THROAT DROP INLET TOPS, PEDESTALS AND DROP INLET WALLS TO ACCOMMODATE NEW BRICKS, D.I. COVERS, FRAMES AND GRATES TO MAINTAIN EXISTING DITCH FLOW LINES (SEE VAOT STANDARD D-8 FOR EXISTING D.I. DETAILS).
2. REDUCE BRICK COURSES AS NECESSARY TO MAINTAIN EXISTING DITCH FLOW LINE.
3. SEE VAOT STANDARDS D-6 FOR CONCRETE TOP DETAIL AND D-16 FOR GRATE DETAIL.
4. ALL REMOVAL AND RECONSTRUCTION, INCLUDING ALL MATERIALS, LABOR AND INCIDENTALS SHALL BE PAID FOR UNDER ITEM 604.412 OR ITEM 604.415.

NOT TO SCALE

**MISCELLANEOUS  
DETAIL  
SHEET #1**



PROJECT NAME: ENOSBURG-RICHFORD  
PROJECT NUMBER: STP 2939(I)

FILE NAME: p11b312.dgn  
PROJECT LEADER: J. LITTLE  
DESIGNED BY: J. LITTLE  
IPARM FILE: p11b312md01.i

PLOT DATE: 3/19/2014  
DRAWN BY: D. DRAPER  
CHECKED BY: J. LITTLE  
SHEET 18 OF 15