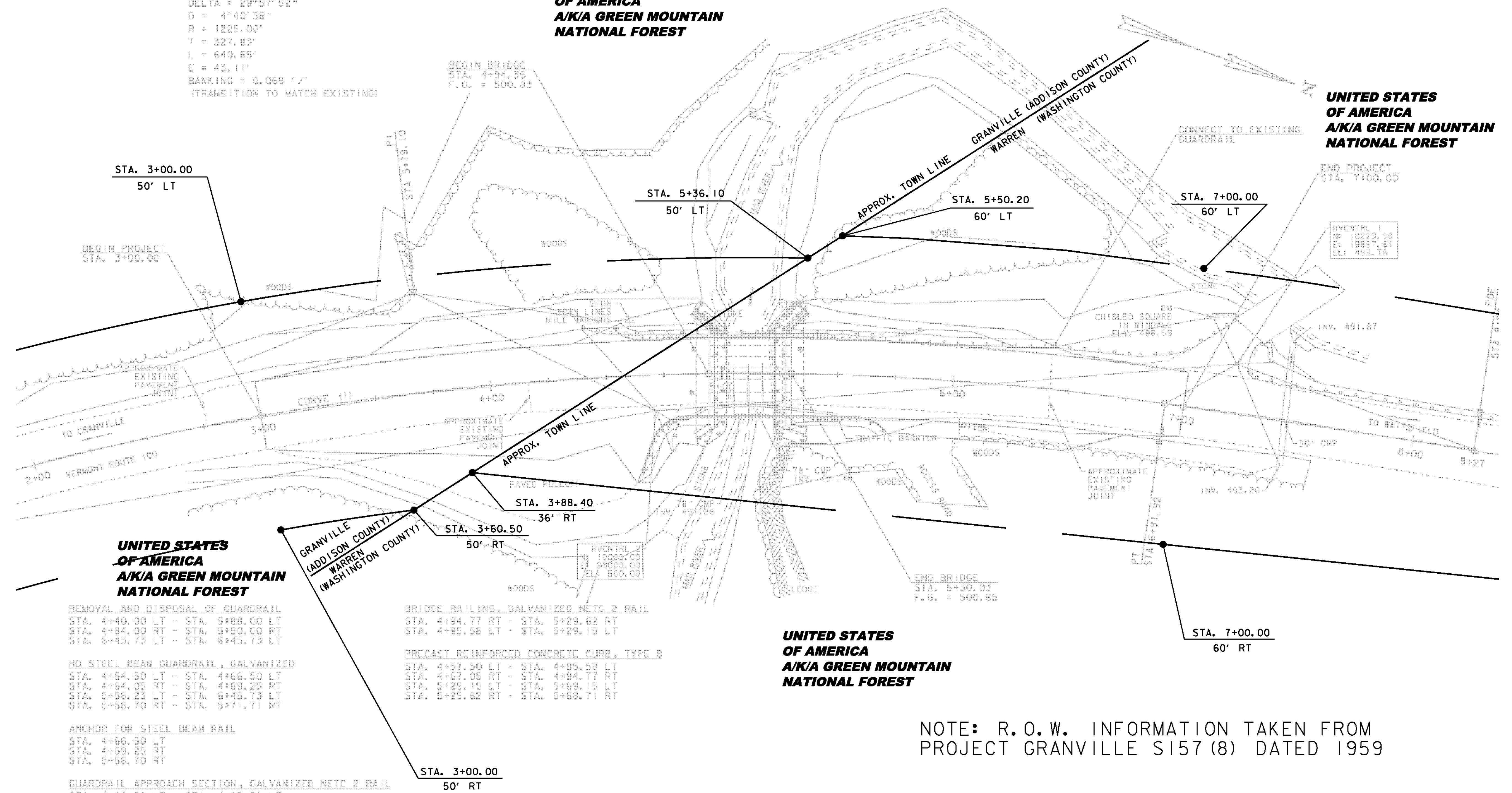


CURVE (1)
 DELTA = 29°57'52"
 D = 4°40'38"
 R = 1225.00'
 T = 327.83'
 L = 640.65'
 E = 43.11'
 BANKING = 0.069' / 1'
 (TRANSITION TO MATCH EXISTING)

**UNITED STATES
 OF AMERICA
 A/K/A GREEN MOUNTAIN
 NATIONAL FOREST**

**UNITED STATES
 OF AMERICA
 A/K/A GREEN MOUNTAIN
 NATIONAL FOREST**



**UNITED STATES
 OF AMERICA
 A/K/A GREEN MOUNTAIN
 NATIONAL FOREST**

REMOVAL AND DISPOSAL OF GUARDRAIL
 STA. 4+40.00 LT - STA. 5+88.00 LT
 STA. 4+84.00 RT - STA. 5+50.00 RT
 STA. 6+43.73 LT - STA. 6+45.73 LT

HD STEEL BEAM GUARDRAIL, GALVANIZED
 STA. 4+54.50 LT - STA. 4+66.50 LT
 STA. 4+64.05 RT - STA. 4+69.25 RT
 STA. 5+58.23 LT - STA. 6+45.73 LT
 STA. 5+58.70 RT - STA. 5+71.71 RT

ANCHOR FOR STEEL BEAM RAIL
 STA. 4+66.50 LT
 STA. 4+69.25 RT
 STA. 5+58.70 RT

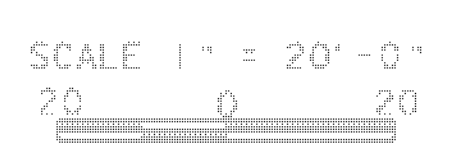
GUARDRAIL APPROACH SECTION, GALVANIZED METC 2 RAIL
 STA. 4+66.50 LT - STA. 4+95.58 LT
 STA. 4+69.25 RT - STA. 4+94.77 RT
 STA. 5+29.15 LT - STA. 5+58.23 LT
 STA. 5+29.62 RT - STA. 5+58.70 RT

BRIDGE RAILING, GALVANIZED METC 2 RAIL
 STA. 4+94.77 RT - STA. 5+29.62 RT
 STA. 4+95.58 LT - STA. 5+29.15 LT

PRECAST REINFORCED CONCRETE CURB, TYPE B
 STA. 4+57.50 LT - STA. 4+95.58 LT
 STA. 4+67.05 RT - STA. 4+94.77 RT
 STA. 5+29.15 LT - STA. 5+69.15 LT
 STA. 5+29.62 RT - STA. 5+68.71 RT

**UNITED STATES
 OF AMERICA
 A/K/A GREEN MOUNTAIN
 NATIONAL FOREST**

NOTE: R.O.W. INFORMATION TAKEN FROM
 PROJECT GRANVILLE S157 (8) DATED 1959



PROJECT NAME:	WARREN	FILE NAME:	11b300\row\11b300\layout1	PLOT DATE:	01-NOV-2011
PROJECT NUMBER:	ER STP 013-4 (36)	PROJECT LEADER:	J. LACROIX	DRAWN BY:	J. BLANCHARD
		DESIGNED BY:		CHECKED BY:	J. BLANCHARD
		R.O.W. LAYOUT 1		SHEET	3 OF 19